

Product Information Packet

November 7, 2016

Data shown is for the current revision model #. Ensure your nameplate model # matches.

Model Number:	5KS364ATE115A
Catalog Number:	E758
Instruction Manual:	GEI-M1023
Connection Diagram:	GEM2034E-FIG10
Outline Drawing:	358B6219AC

Accessory Connection Diagrams			
Bearing Thermocouple:	None	Heater:	None
RTD:	None	Thermistor:	None
Thermostat:	None	Winding Thermocouple:	None
Bearing RTD:	None		

Table of Contents	
Specification	01
Performance Characteristics	02
Outline Drawing	03
Connection Drawing(s)	04

Marks:

MODEL NUMBER:	5KS364ATE115A	Estimated Weight:	686 Lbs
Outline Drawing:	358B6219AC	Time Rating:	CONT
Connection Diagram:	GEM2034E-FIG10	Enclosure:	DP
Instruction Book:	GEI-M1023	Encl Construction:	OPEN
Design Code:	36AD0004A	Ambient Max(°C):	40
Type:	KS	Alt Ambient Max(°C):	--
Frame:	364TS	Insulation Class:	F
Phases:	3	NEMA Design:	A
Poles:	2	Nominal Efficiency:	93.6 %
Output Power:	75HP 55.5KW	Guaranteed Efficiency:	92.4
RPM:	3570	3/4 Load Efficiency:	94.2
Voltage:	230/460	KVA Code:	H
Hertz:	60	Max KVAR:	16.1
Amps - FL:	183/91.5	Power Factor:	82
Service Factor:	1.15	Bearing - DE:	6313C3
Alt Service Factor:	--	Bearing - ODE:	6313C3

Enclosure is Dripproof

Stamped Nameplate Notes:**Additional Information:**

2 POLE DP
 LRA: 1293.2/646.6
 NO. OF MOTOR LEADS: 12
 CONDUIT BOX VOLUME (IN³): 550
 CONDUIT BOX MTL: STAMPED STEEL
 GREASE TYPE: CHEVRON SRI-2 POLYUREA GREASE
 USABLE AT 200V @ 75HP, 196 AMPS @ 1.0 SF
 50HZ DATA: 75 HP, 200/400V, 214/107 AMPS AT 1.0SF, 2970 RPM
 SOUND POWER: 90.7
 DMK, 06/04 DATA UPDATE 12/2004
 INVERTER DUTY PER NEMA MG1 PART 31
 FOR VARIABLE TORQUE LOADS

Performance Characteristics

1st Winding 1st Connection

Design: 36AD0004A

Marks:

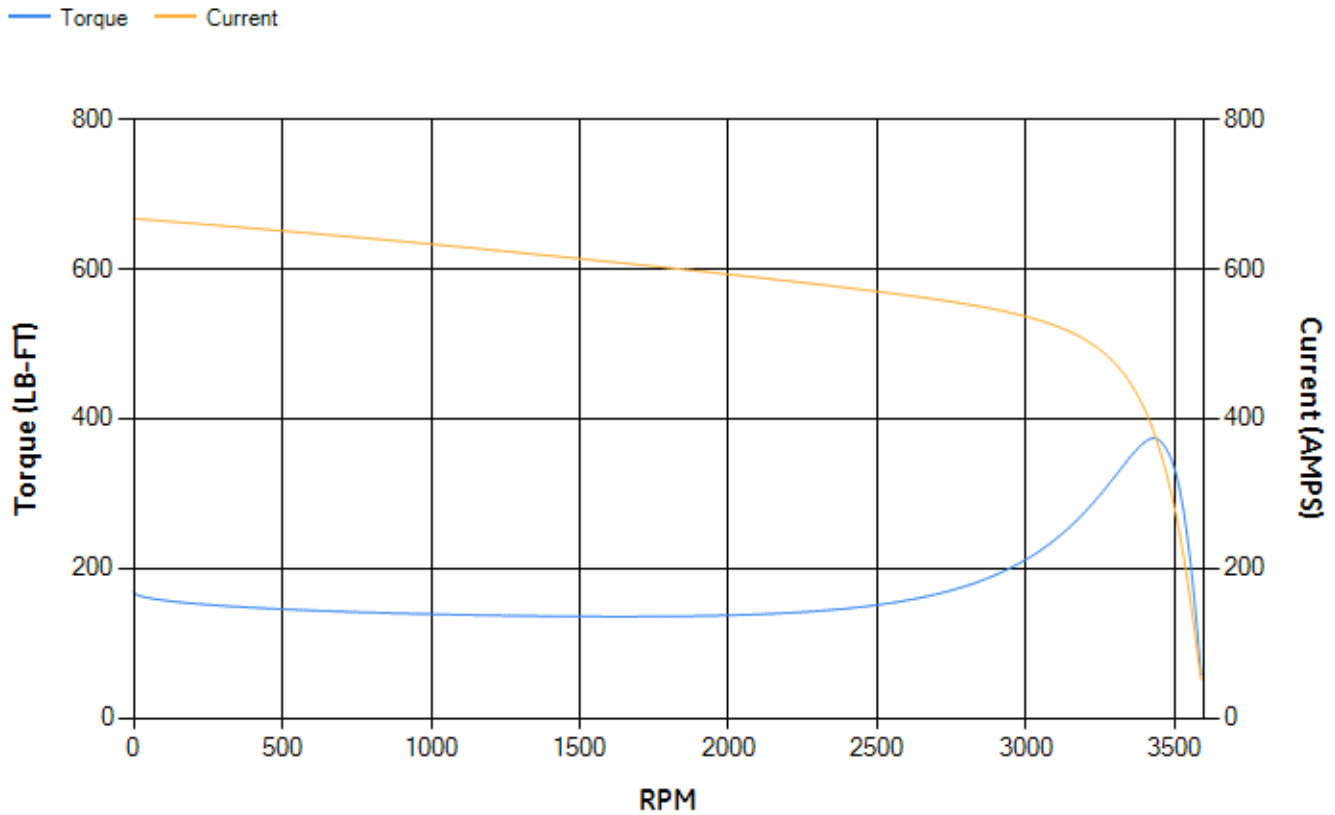
LOAD %	125.0	115.0	100.0	75.0	50.0	25.0	0.0
% EFF	94.27	94.37	94.64	94.22	93.12	88.87	0.00
% PF	88.59	88.18	87.17	83.71	75.52	54.62	6.93
AMPS	105.07	97.01	85.1	66.75	49.91	36.15	29.04

TORQ(FL)#FT	110.23	TORQ(LR)%FL	152.79	TORQ(BD)%FL	339.13
AMPS(LR)	667.31	PF AT START	0.22		

This motor is capable of two cold or one hot start with a maximum connected load inertia of 339 Lb-Ft Sq (14.27 Kg-meter Sq) at 100% voltage, where the load torque varies with the square of the speed. Acceleration time with maximum inertia and the above load type is 30 seconds. Safe stall time at 100% voltage is 52 seconds cold, 42 seconds hot. Rotor inertia is 7.3 Lb-Ft Sq (0.31 Kg-meter Sq).

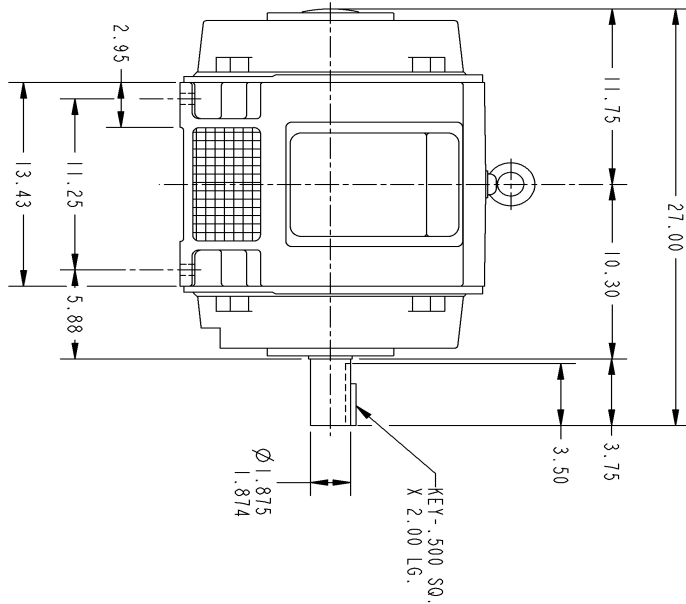
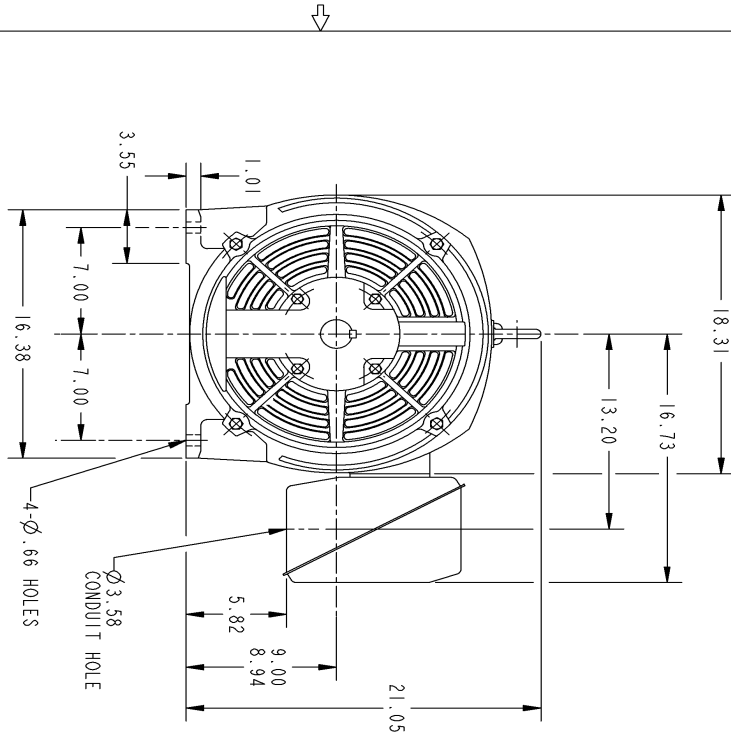
Open Circuit A-C:	0.964	Short Circuit D-C:	0.027
Short Circuit A-C:	0.044	X/R Ratio:	9.997
Stator Slots:	48	Rotor Slots:	40

Speed Torque Current Curve (First Connection, First Speed)



NAME:501053131 OBJECT:358B6219AC DATE:02-May-07 09:17:49

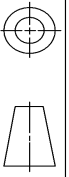
Marks:



SIZE: 358B6219AC
 GE PROPRIETARY INNOVATION
 This General is the property of General Electric Company (GEC) and contains confidential information. This General is loaned to the recipient under the condition that the information contained herein shall be disclosed only to those individuals and organizations specifically approved in writing by GE Industrial Systems. This General shall be returned to GEC upon its receipt and shall not be used for any other purpose. This General is subject to certain restrictions under U.S. Export Control laws and regulations.

REV.	DESCRIPTION	DATE	APPROVED
1	ISAAC 07-0770	04/27/07	RHONDA

THIRD ANGLE PROJECTION



NOTES :

1. CONDUIT BOX MAY BE PLACED WITH THE ENTRANCE DOWN, UP OR ON EITHER SIDE.
2. F-1 ASW AS SHOWN.
3. F-2 ASW - HAS CONDUIT BOX ON OPPOSITE SIDE.

UNLESS OTHERWISE SPECIFIED: DIMENSIONS ARE IN INCHES TOLERANCE ON: 2 PL. DECIMALS ± .01 3 PL. DECIMALS ± .005 ANGLES ± 1°	SIGNATURES	DATE	<p>GENERAL ELECTRIC COMPANY Fort Wayne, Indiana</p>
DRAWN: PRADHAKAR 03/27/03	CHECKED: PRADHAKAR 03/27/03	ENGINEER: PRADHAKAR 03/27/03	
MATERIAL: APPLIED PRACTICES	ISSUED: PRADHAKAR 03/27/03		
SIZE: DRAWING B	SCALE: DRAWING SCALE		REV. 1
<p>364TS - OPEN DRIP PROOF 358B6219AC</p>			<p>OUTLINE</p>
DISTRIBUTION:			

Marks:

Connection Diagram
GEM2034E-FIG10

