

Product Information Packet

November 8, 2016

Data shown is for the current revision model #. Ensure your nameplate model # matches.

| | |
|----------------------------|-----------------------|
| Model Number: | 5KS447XAA118D8 |
| Catalog Number: | M9477 |
| Instruction Manual: | GEI-56128 |
| Connection Diagram: | GEM2034E-FIG20 |
| Outline Drawing: | 239C6800VY |

| Accessory Connection Diagrams | | | |
|--------------------------------------|------|------------------------------|------|
| Bearing Thermocouple: | None | Heater: | None |
| RTD: | None | Thermistor: | None |
| Thermostat: | None | Winding Thermocouple: | None |
| Bearing RTD: | None | | |

Table of Contents

| | |
|-----------------------------|----|
| Specification | 01 |
| Performance Characteristics | 02 |
| Outline Drawing | 03 |
| Connection Drawing(s) | 04 |
| Spare parts | 05 |



Marks:

| | | | |
|----------------------------|-----------------------|-------------------------------|----------|
| MODEL NUMBER: | 5KS447XAA118D8 | Estimated Weight: | 2840 Lbs |
| Outline Drawing: | 239C6800VY | Time Rating: | CONT |
| Connection Diagram: | GEM2034E-FIG20 | Enclosure: | TEFC |
| Instruction Book: | GEI-56128 | Encl Construction: | 841 |
| Design Code: | 49BD0110A | Ambient Max(°C): | 40 |
| Type: | KS | Alt Ambient Max(°C): | -- |
| Frame: | 447TS | Insulation Class: | H |
| Phases: | 3 | NEMA Design: | B |
| Poles: | 2 | Nominal Efficiency: | 95.4 % |
| Output Power: | 200HP 148KW | Guaranteed Efficiency: | 95.0 |
| RPM: | 3580 | 3/4 Load Efficiency: | 95.7 |
| Voltage: | 460 | KVA Code: | G |
| Hertz: | 60 | Max KVAR: | 30.1 |
| Amps - FL: | 212.0 | Power Factor: | 92.5 |
| Service Factor: | 1.15 | Bearing - DE: | 6314ZC3 |
| Alt Service Factor: | -- | Bearing - ODE: | 6314ZC3 |

Enclosure is Totally Enclosed Fan-Cooled

Stamped Nameplate Notes:

DE BRG 70BC03JP30, ODE BRG 70BC03JP30
 INVERTER DUTY PER NEMA MG1 PART 31
 ALTERNATE RATING FOR PWM CONTROL:1.0SF 40C AMBIENT
 VAR TORQUE RANGE 0-60 HZ
 MAX EXPOSED INTERNAL AND EXTERNAL SURFACE
 TEMPERATURES UNDER USUAL SERVICE CONDITIONS
 AT 1.00 S.F. DO NOT EXCEED 200 DEG C
 STAMP NP249A5499AP AS BELOW:
 MODEL:5KS447XAA118D8 S/N: XXX
 EX NA IIC T3 GC CSA.09.2216219
 CLASS I, ZONE 2, AEX NA IIC T3
 CLASS I, DIV 2, GROUPS A, B, C, D T3
 -25C <= TAMB <= 40C
 EXCEPTION TO IEEE-STD-841-2009:SOUND POWER 96 DBA

Additional Information:

2P - TS EXTN - SPLIT LEAD
 PAINTED FRAME ID & SHAFT,
 FAN COVER INSIDE & ODE E/S OUTSIDE
 700 CU IN - 3.00" NPT WITH DRAIN HOLES
 INPRO SEAL BOTH ENDS
 OIL RESISTANT SLEEVING ON LEADS
 .0015" TIR SHAFT RUNOUT
 ROUTINE TEST REPORT AND 5 POINT VIBRATION TEST
 REPORT INCLUDED IN C/B
 COPPER WASHER UNDER HEADS OF BEARING CAP BOLTS,
 APPLY TITE-SEAL (A50CD427A) ON BEARING CAP SCREWS,



RABBETS AND PLUG THREADS.
GROUND PAD
F1 MOUNTING

Performance Characteristics

1st Winding 1st Connection

Design: 49BD0110A

Marks:

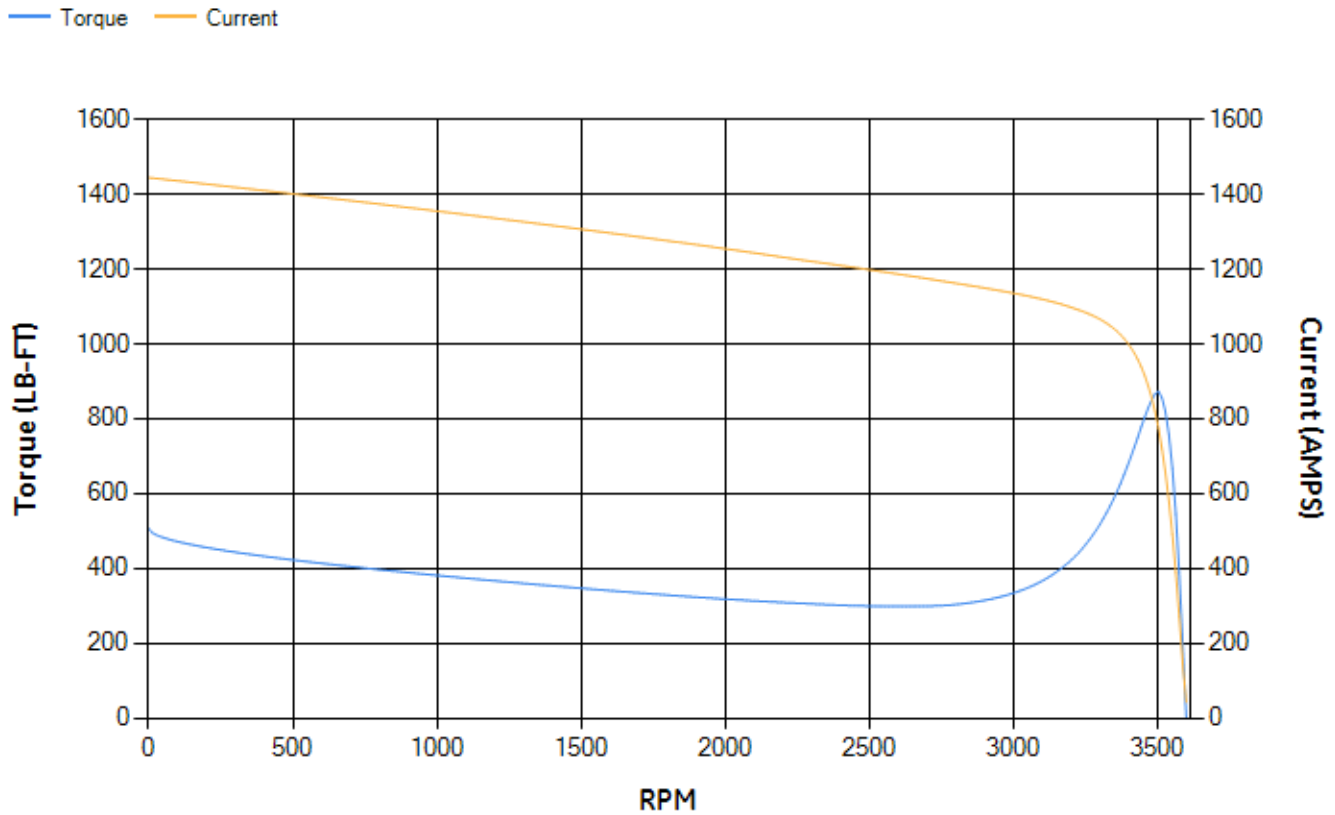
| LOAD % | 125.0 | 115.0 | 100.0 | 75.0 | 50.0 | 25.0 | 0.0 |
|--------|--------|-------|--------|-------|-------|-------|-------|
| % EFF | 95.17 | 95.36 | 95.79 | 95.74 | 95.35 | 92.96 | 0.00 |
| % PF | 92.1 | 92.29 | 92.35 | 91.53 | 88.12 | 74.35 | 7.4 |
| AMPS | 266.95 | 244.6 | 211.63 | 160.2 | 111.4 | 67.71 | 41.92 |

| | | | | | |
|--------------------|---------|--------------------|--------|--------------------|--------|
| TORQ(FL)#FT | 293.34 | TORQ(LR)%FL | 172.66 | TORQ(BD)%FL | 297.42 |
| AMPS(LR) | 1444.18 | PF AT START | 0.25 | | |

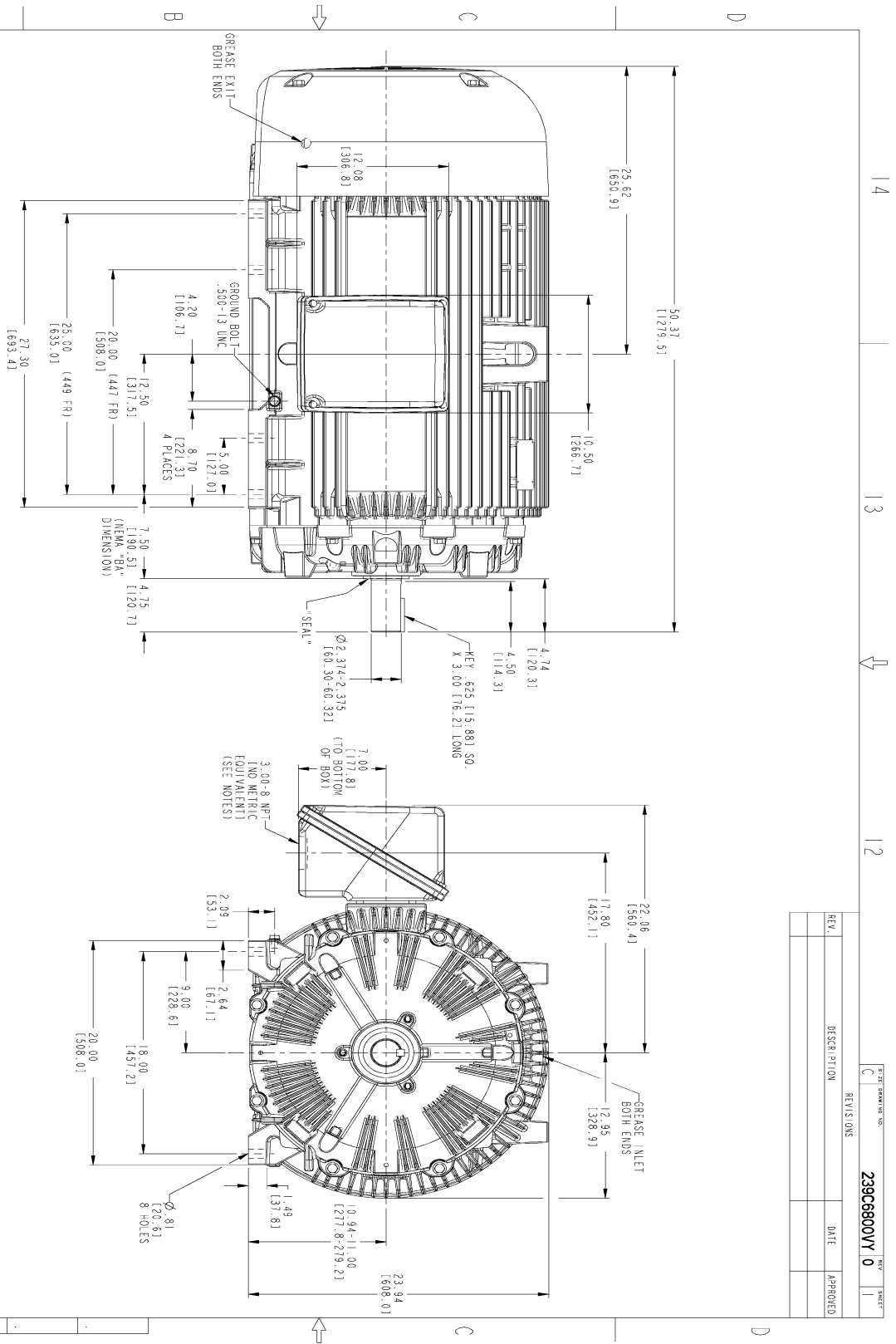
This motor is capable of two cold or one hot start with a maximum connected load inertia of 760 Lb-Ft Sq (32 Kg-meter Sq) at 100% voltage, where the load torque varies with the square of the speed. Acceleration time with maximum inertia and the above load type is 33 seconds. Safe stall time at 100% voltage is 74 seconds cold, 39 seconds hot. Rotor inertia is 51.69 Lb-Ft Sq (2.18 Kg-meter Sq).

| | | | |
|---------------------------|-------|---------------------------|--------|
| Open Circuit A-C: | 2.393 | Short Circuit D-C: | 0.032 |
| Short Circuit A-C: | 0.071 | X/R Ratio: | 12.114 |
| Stator Slots: | 48 | Rotor Slots: | 38 |

Speed Torque Current Curve (First Connection, First Speed)



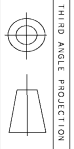
Marks:



| | | | |
|------------------|-------------|----------------|----------|
| SIZE DRAWING NO. | | REV SHEET | |
| C | | 239C6800VY 0 1 | |
| REV. | DESCRIPTION | DATE | APPROVED |
| | | | |
| | | | |

NOTES:

1. CONDUIT BOX MAY BE PLACED WITH THE ENTRANCE DOWN, UP OR ON EITHER SIDE.
2. F-1 ASSEMBLY AS SHOWN.
3. F-2 ASSEMBLY CONDUIT BOX ON OPPOSITE SIDE.
4. BRACKETED DIMENSIONS ARE METRIC (MILLIMETERS).
5. TOLERANCE ON PERMISSIBLE SHAFT EXTENSION RINOUT IS .0015 T.I.R.



| | | | |
|-------------------|---------|---------------------|----------|
| SIGNATURES | | DATE | |
| DESIGNER | TEJASVI | DATE | 01/20/15 |
| CHECKED | TEJASVI | DATE | 01/20/15 |
| DRG | TEJASVI | DATE | 01/20/15 |
| QUALITY | TEJASVI | DATE | 01/20/15 |
| ISSUED | TEJASVI | DATE | 01/20/15 |
| SCALE: 0.180 | | REF. NO. 239C6800VY | |
| DISTRIBUTION: MMP | | SHEET 1 OF 1 | |

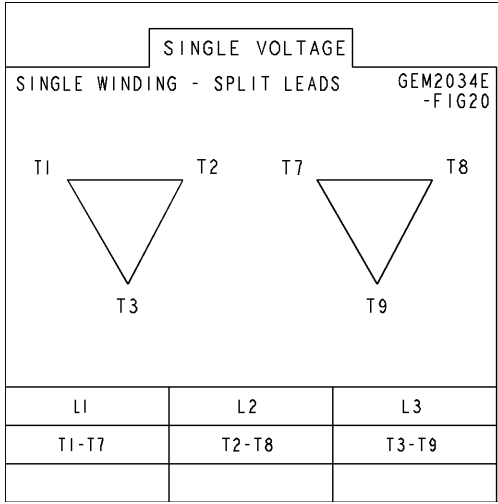
OUTLINE
447/449 TS TEFC XSD 841
700 CU. IN. C BOX

239C6800VY

GENERAL ELECTRIC COMPANY

Marks:

Connection Diagram
GEM2034E-FIG20



| End shield Assembly | | |
|---------------------|---------------|----------------|
| Part Description | DE Side Part# | ODE Side Part# |
| End Shield | 115E4354AA1 | 115E4354LL1 |
| Bearing | 235A2616AA01 | 235A2616AA01 |
| Slinger/Inproseal | 235A4575GS3 | 235A4575GS3 |

| Fan & Fan Cover Assembly | |
|--------------------------|-------------|
| Part Description | Part# |
| Fan | 159C7100AA1 |
| Fan Cover | 128D6841AA1 |

| Conduit & Accessories Box Assembly | |
|------------------------------------|-------------|
| Part Description | Part# |
| Conduit Box | 118D4408DG2 |

| Mechanical Accessories | |
|------------------------|-------|
| Part Description | Part# |
| Brake | |
| Tachometer | |