

Product Information Packet

January 13, 2017

Data shown is for the current revision model #. Ensure your nameplate model # matches.

| | |
|----------------------------|----------------------|
| Model Number: | 5KS254SAE126A |
| Catalog Number: | V964 |
| Instruction Manual: | GEK-95655 |
| Connection Diagram: | GEM2034E-FIG3 |
| Outline Drawing: | 4002B5825PLP5210 |

| Accessory Connection Diagrams | | | |
|-------------------------------|------|------------------------------|----------|
| Bearing Thermocouple: | None | Heater: | 3027JE-1 |
| RTD: | None | Thermistor: | None |
| Thermostat: | None | Winding Thermocouple: | None |
| Bearing RTD: | None | | |

| Table of Contents | |
|-----------------------------|----|
| Specification | 01 |
| Performance Characteristics | 02 |
| Outline Drawing | 03 |
| Connection Drawing(s) | 04 |



Marks:

| | | | |
|----------------------------|----------------------|-------------------------------|-----------|
| MODEL NUMBER: | 5KS254SAE126A | Estimated Weight: | 315 Lbs |
| Outline Drawing: | 4002B5825PLP5210 | Time Rating: | CONT |
| Connection Diagram: | GEM2034E-FIG3 | Enclosure: | TEFC |
| Instruction Book: | GEK-95655 | Encl Construction: | SD |
| Design Code: | 25BD0090A | Ambient Max(°C): | 40 |
| Type: | KS | Alt Ambient Max(°C): | -- |
| Frame: | L254HP10 | Insulation Class: | H |
| Phases: | 3 | NEMA Design: | B |
| Poles: | 2 | Nominal Efficiency: | 91 % |
| Output Power: | 15HP 11.1KW | Guaranteed Efficiency: | 89.5 |
| RPM: | 3550 | 3/4 Load Efficiency: | 91.8 |
| Voltage: | 230/460 | KVA Code: | G |
| Hertz: | 60 | Max KVAR: | 2.9 |
| Amps - FL: | 34.6/17.3 | Power Factor: | 89.0 |
| Service Factor: | 1.15 | Bearing - DE: | 6309ZC3 |
| Alt Service Factor: | -- | Bearing - ODE: | 6309-2ZC3 |

Enclosure is Totally Enclosed Fan-Cooled

Stamped Nameplate Notes:

PREMIUM EFFICIENT MOTOR
HTR LDS H 115V 60W
SEVERE DUTY
INVERTER DUTY PER NEMA MG1 PART 31
ALTERNATE RATING FOR PWM CONTROL:
1.0 SF VAR TORQUE RANGE 0-60 HZ
IP 55
SUITABLE FOR 190/380V 50 HZ WITH
42/21 AMPS AND 2920 RPM AT 1.0 S.F

Additional Information:

2P - HP EXTN
C/BOX 137 CU IN-1.25 NPT
AUX LEADS EXIT WITH MOTOR LEADS
RCF 5000 CPM, STATIC DEFLECTION .0014 INCHES &
CENTER OF GRAVITY 10.75 INCHES
SOLID SHAFT NORMAL THRUST
OIL RESISTANT SLEEVING ON LEADS
BEARING LIFE 8760 HOURS AT 685 LB THRUST

Performance Characteristics

1st Winding 1st Connection

Design: 25BD0090A

Marks:

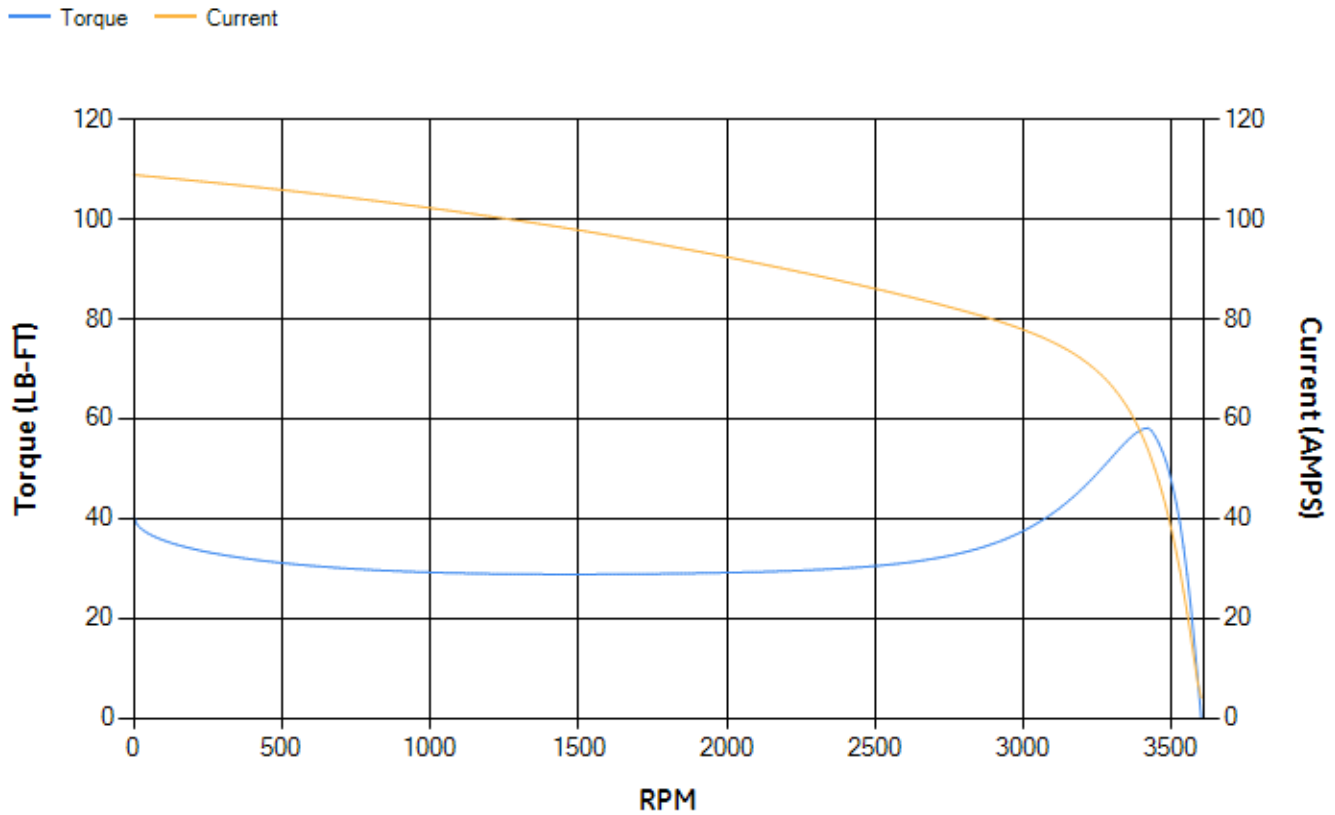
| LOAD % | 125.0 | 115.0 | 100.0 | 75.0 | 50.0 | 25.0 | 0.0 |
|--------|-------|-------|-------|-------|-------|-------|------|
| % EFF | 89.46 | 90.13 | 91.15 | 91.83 | 91.73 | 88.48 | 0.00 |
| % PF | 88.61 | 89.02 | 89.24 | 88.25 | 83.82 | 67.77 | 9.58 |
| AMPS | 22.14 | 20.12 | 17.26 | 12.99 | 9.13 | 5.85 | 4.01 |

| | | | | | |
|-------------|--------|-------------|--------|-------------|--------|
| TORQ(FL)#FT | 22.19 | TORQ(LR)%FL | 182.51 | TORQ(BD)%FL | 260.79 |
| AMPS(LR) | 108.87 | PF AT START | 0.3 | | |

This motor is capable of two cold or one hot start with a maximum connected load inertia of 109 Lb-Ft Sq (4.59 Kg-meter Sq) at 100% voltage, where the load torque varies with the square of the speed. Acceleration time with maximum inertia and the above load type is 50 seconds. Safe stall time at 100% voltage is 94 seconds cold, 60 seconds hot. Rotor inertia is 1.05 Lb-Ft Sq (0.04 Kg-meter Sq).

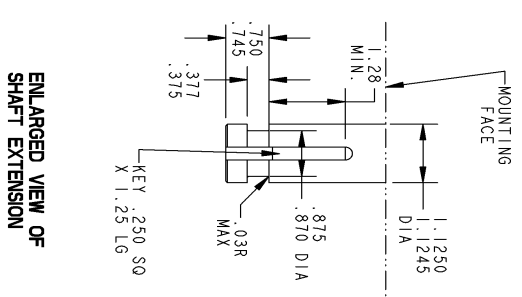
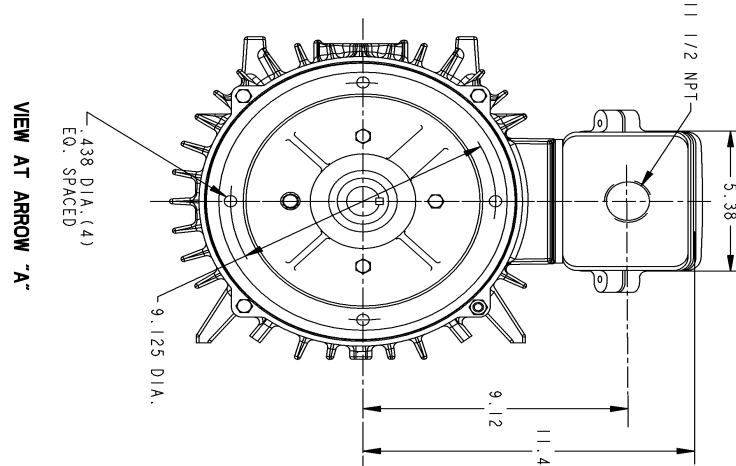
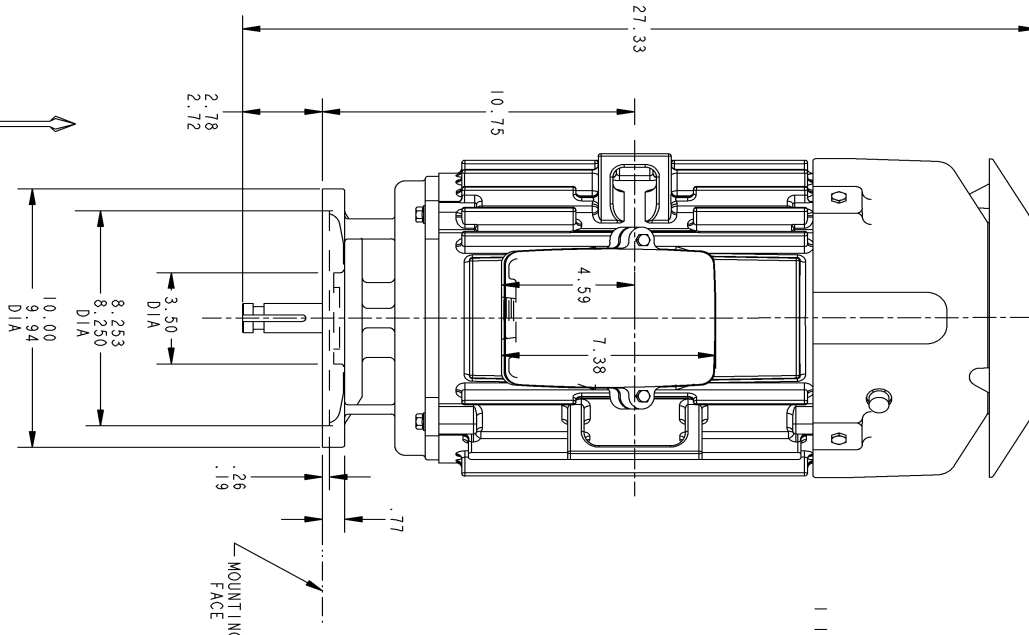
| | | | |
|--------------------|-------|--------------------|-------|
| Open Circuit A-C: | 0.844 | Short Circuit D-C: | 0.013 |
| Short Circuit A-C: | 0.031 | X/R Ratio: | 4.8 |
| Stator Slots: | 36 | Rotor Slots: | 26 |

Speed Torque Current Curve (First Connection, First Speed)



NAME:320002276 OBJECT:4002B5825PLP5210 DATE:13-Feb-09 16:29:27

Marks:



NOTE 1: CONDUIT BOX MAY BE ASSEMBLED WITH ENTRANCE UP, DOWN OR TO EITHER SIDE

VIEW AT ARROW "A"

ENLARGED VIEW OF
SHAFT EXTENSION

| | | | | | | |
|------------|------------------|----------------|--|-----------------------------|-------------------------|----------------|
| CAD NO. | 4002B5825PLP5210 | | | TITLE | INDUCTION MOTOR OUTLINE | |
| REF. | 4002B5825PLP210 | | | PETERBOROUGH | 4002B5825PLP5210 | |
| PLAT CLASS | | FIRST MADE FOR | | FR. K-L254HP10 | CIR STANDARD VERTICAL | 5KS2560PL6DA9A |
| PLAT SCALE | .25 | T. E. F. C. | | SOLID SHAFT - NORMAL THRUST | (OPL) | |
| | | SHT NO. 1 | | MOTOR PLAN | | |

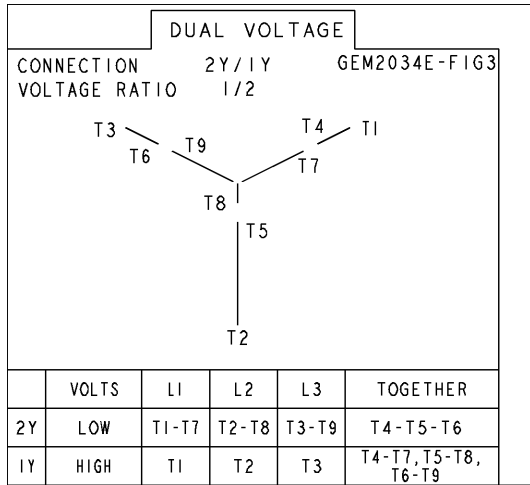
| REV | DESCRIPTION | DATE | INT'L | NAME | DATE |
|-----|-------------------------|----------|-------|-----------------|----------|
| 2 | ISAC NO: # 09-0130 ATUL | 02/12/09 | | DRAMAN P. RAJU | 06/23/03 |
| 1 | EXTRA DIMENSION REMOVED | 06/24/03 | | CHEKED BHARATHI | 06/23/03 |

CAD DRAWING - NO MANUAL REVISIONS PERMITTED

| | |
|-----------|-------|
| PRINTS TO | 18K15 |
|-----------|-------|

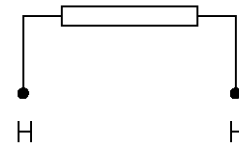
Marks:

Connection Diagram
GEM2034E-FIG3



Heater Connection
3027JE-1

FIG. 1
HEATER CONN.



| | | |
|--------------|----|----|
| CONTROL | L1 | L2 |
| VOLTAGE ONLY | H | H |