

Product Information Packet

January 12, 2017

Data shown is for the current revision model #. Ensure your nameplate model # matches.

Model Number:	5KS324CAG208A
Catalog Number:	E9284
Instruction Manual:	GEI-56128
Connection Diagram:	GEM2034E-FIG1
Outline Drawing:	225B4700AA

Accessory Connection Diagrams			
Bearing Thermocouple:	None	Heater:	None
RTD:	None	Thermistor:	None
Thermostat:	3027JE-2	Winding Thermocouple:	None
Bearing RTD:	None		

Table of Contents	
Specification	01
Performance Characteristics	02
Outline Drawing	03
Connection Drawing(s)	04



Marks:

MODEL NUMBER:	5KS324CAG208A	Estimated Weight:	700 Lbs
Outline Drawing:	225B4700AA	Time Rating:	CONT
Connection Diagram:	GEM2034E-FIG1	Enclosure:	TEFC
Instruction Book:	GEI-56128	Encl Construction:	XP
Design Code:	32ED1067AA	Ambient Max(°C):	40
Type:	KS	Alt Ambient Max(°C):	XX
Frame:	324T	Insulation Class:	F
Phases:	3	NEMA Design:	A
Poles:	4	Nominal Efficiency:	94.1 %
Output Power:	40HP 29.6KW	Guaranteed Efficiency:	93.0
RPM:	1780	3/4 Load Efficiency:	94.9
Voltage:	460	KVA Code:	G
Hertz:	60	Max KVAR:	14.3
Amps - FL:	49.4	Power Factor:	80.5
Service Factor:	1.0	Bearing - DE:	6312ZC3
Alt Service Factor:	XX	Bearing - ODE:	6312ZC3

Enclosure is Totally Enclosed Fan-Cooled

Stamped Nameplate Notes:

EXPLOSION PROOF MOTOR
TEMP CODE T3C
THERMOSTAT LEADS TB1-TB2:TRIP

Additional Information:

STAMP NP249A5571AD AS FOLLOWS:
CL I GR C&D CL II GR F&G
4 POLE, T SHAFT EXTN
(3)NC THERMOSTAT LEADS TO MAIN CONDUIT BOX
250 Cu. In. CBOX

Performance Characteristics

1st Winding 1st Connection

Design: 32ED1067AA

Marks:

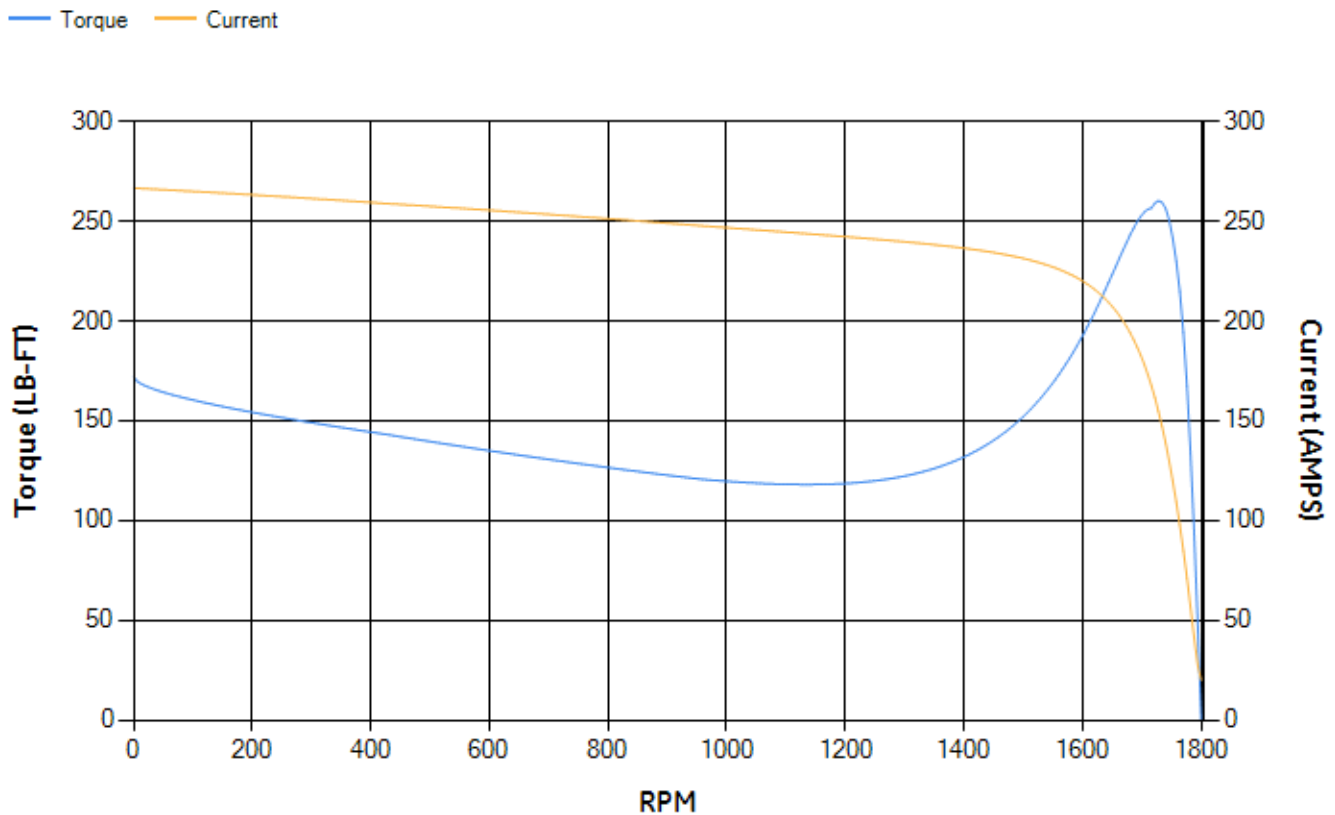
LOAD %	125.0	115.0	100.0	75.0	50.0	25.0	0.0
% EFF	94.24	94.46	94.92	94.87	94.32	91.3	0.00
% PF	82.23	81.77	80.5	76.06	66.09	44.18	3.91
AMPS	60.39	55.74	48.99	38.91	30.03	23.2	19.95

TORQ(FL)#FT	117.97	TORQ(LR)%FL	145.96	TORQ(BD)%FL	217.04
AMPS(LR)	266.56	PF AT START	0.28		

This motor is capable of two cold or one hot start with a maximum connected load inertia of 861 Lb-Ft Sq (36.25 Kg-meter Sq)at 100% voltage, where the load torque varies with the square of the speed. Acceleration time with maximum inertia and the above load type is 47 seconds. Safe stall time at 100% voltage is 87 seconds cold, 56 seconds hot. Rotor inertia is 5.9 Lb-Ft Sq (0.25 Kg-meter Sq).

Open Circuit A-C:	0.565	Short Circuit D-C:	0.033
Short Circuit A-C:	0.038	X/R Ratio:	12.512
Stator Slots:	48	Rotor Slots:	38

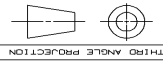
Speed Torque Current Curve (First Connection, First Speed)



Marks:

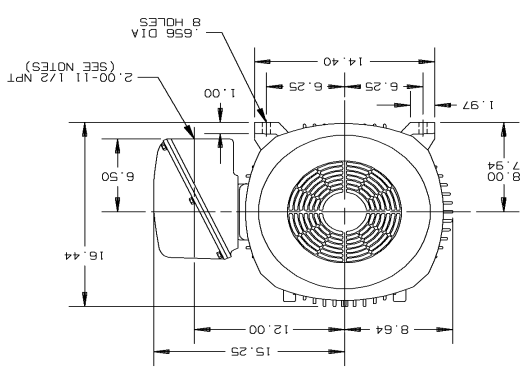
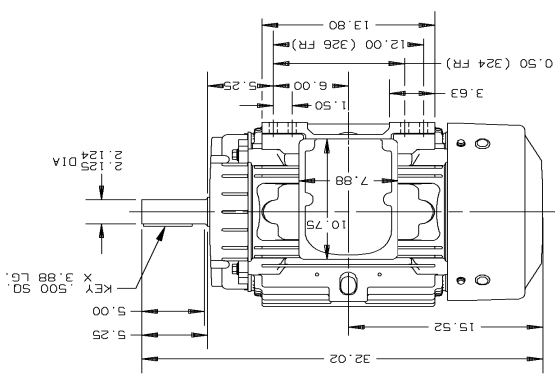
SHEET 1 OF 1		SCALE 1:1	DATE 04/12/82
CNO NO. F320.225B4700AA		SIZE F320.225B4700AA	DATE 04/12/82
DRAWN BY M. JONES		CHECKED BY M. JONES	DATE 04/06/82
DESIGNED BY M. JONES		APPROVED BY M. JONES	DATE 04/06/82
GE Motors			
Fort Wayne, Indiana			

APPROVED REVISIONS:	
NO.	DESCRIPTION
1.	CONDUIT BOX MAY BE PLACED WITH THE ENTRANCE DOWN, UP, OR ON EITHER SIDE
2.	F-1 ASM HAS CONDUIT BOX ON OPPOSITE SIDE



THIRD ANGLE PROJECTION

METRIC EQUIV. 225B4700AD

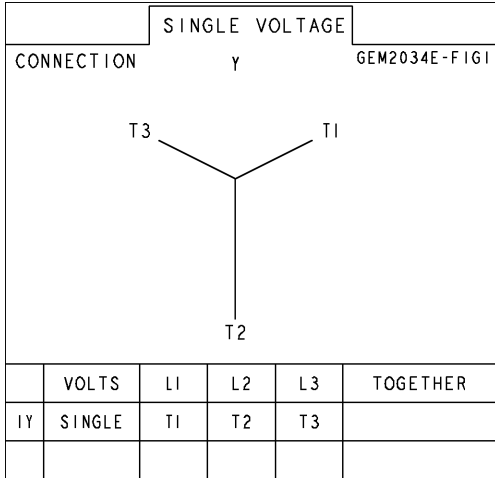


REV	DESCRIPTION	DATE	APPROVED
1	ADDED METRIC EQUIVALENT TM	09/21/83	
2	910-963 CLF	10/17/91	

SIZE 225B4700AA 1 REV 2

Marks:

Connection Diagram
GEM2034E-FIG1



Thermostat Connection
3027JE-2

FIG. 2
THERMOSTAT CONN.

