

# Product Information Packet

November 8, 2016

Data shown is for the current revision model #. Ensure your nameplate model # matches.

<b>Model Number:</b>	<b>5KS365LAA229A</b>
<b>Catalog Number:</b>	<b>M7663</b>
<b>Instruction Manual:</b>	GEI-56128
<b>Connection Diagram:</b>	GEM2034E-FIG9
<b>Outline Drawing:</b>	239C6201AG

<b>Accessory Connection Diagrams</b>			
<b>Bearing Thermocouple:</b>	None	<b>Heater:</b>	None
<b>RTD:</b>	None	<b>Thermistor:</b>	None
<b>Thermostat:</b>	None	<b>Winding Thermocouple:</b>	None
<b>Bearing RTD:</b>	None		

## Table of Contents

Specification	01
Performance Characteristics	02
Outline Drawing	03
Connection Drawing(s)	04
Spare parts	05



**Marks:**

<b>MODEL NUMBER:</b>	<b>5KS365LAA229A</b>	<b>Estimated Weight:</b>	1010 Lbs
<b>Outline Drawing:</b>	239C6201AG	<b>Time Rating:</b>	CONT
<b>Connection Diagram:</b>	GEM2034E-FIG9	<b>Enclosure:</b>	TEFC
<b>Instruction Book:</b>	GEI-56128	<b>Encl Construction:</b>	SD
<b>Design Code:</b>	36BD1169A	<b>Ambient Max(°C):</b>	40
<b>Type:</b>	KS	<b>Alt Ambient Max(°C):</b>	--
<b>Frame:</b>	365TC	<b>Insulation Class:</b>	F
<b>Phases:</b>	3	<b>NEMA Design:</b>	A
<b>Poles:</b>	4	<b>Nominal Efficiency:</b>	95.4 %
<b>Output Power:</b>	75HP 55.5KW	<b>Guaranteed Efficiency:</b>	94.5
<b>RPM:</b>	1785	<b>3/4 Load Efficiency:</b>	95.4
<b>Voltage:</b>	230/460	<b>KVA Code:</b>	G
<b>Hertz:</b>	60	<b>Max KVAR:</b>	28.5
<b>Amps - FL:</b>	181.6/90.8	<b>Power Factor:</b>	81.0
<b>Service Factor:</b>	1.15	<b>Bearing - DE:</b>	6314ZC3
<b>Alt Service Factor:</b>	--	<b>Bearing - ODE:</b>	6314ZC3

**Enclosure is Totally Enclosed Fan-Cooled**

---

**Stamped Nameplate Notes:**

INVERTER DUTY PER NEMA MG1 PART 31  
 ALTERNATE RATING FOR PWM CONTROL:  
 1.0 SF VAR TORQUE RANGE 0-60 HZ

**Additional Information:**

4P - T EXTN  
 C FACE ON DE  
 700 CU IN - 3.00" NPT  
 OIL RESISTANT SLEEVING ON LEADS  
 F1 MOUNTING  
 VIBRATION LIMIT 0.15 INCH PER SEC

**Performance Characteristics**

1st Winding 1st Connection

**Design: 36BD1169A**

**Marks:**

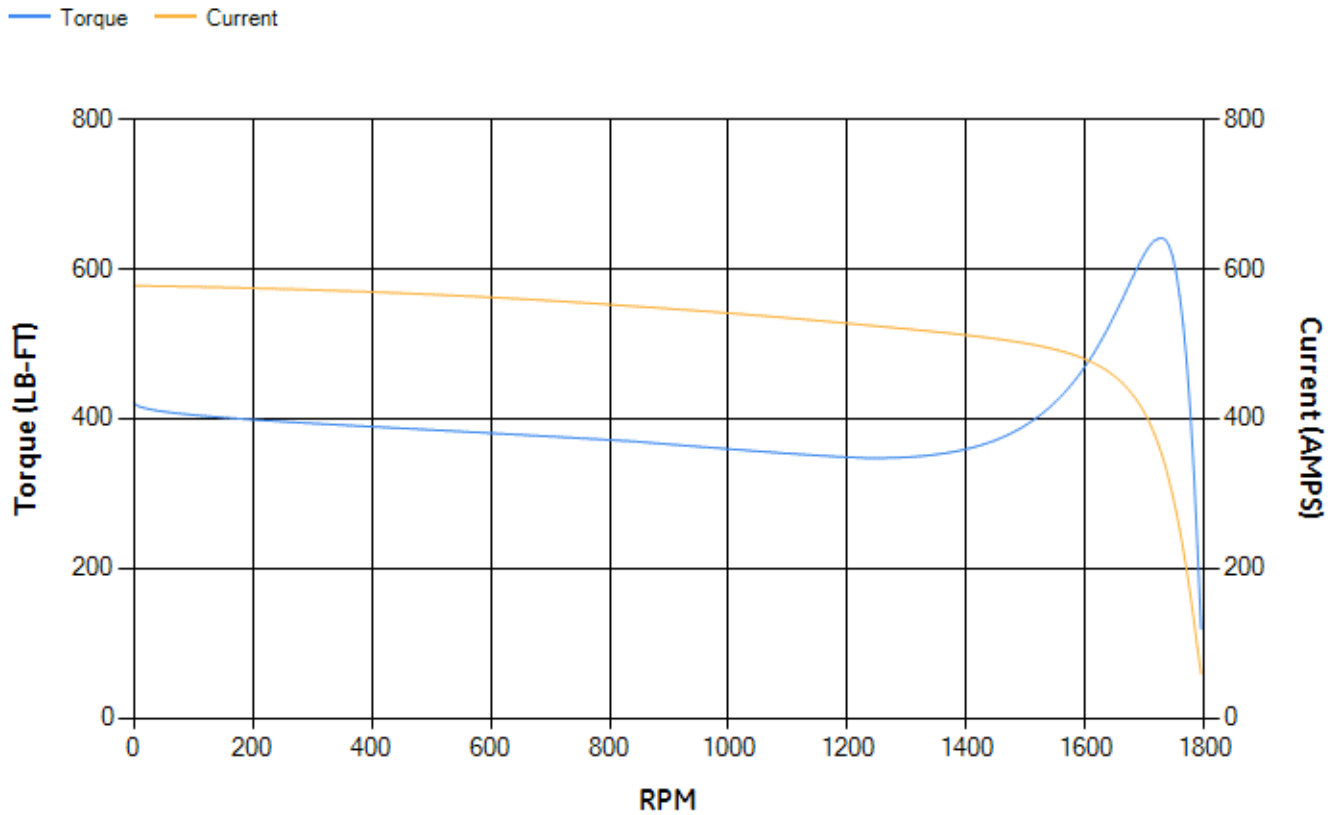
LOAD %	125.0	115.0	100.0	75.0	50.0	25.0	0.0
% EFF	94.82	95.02	95.46	95.43	95.02	92.49	0.00
% PF	83.82	83.04	81.29	75.96	64.88	42.05	2.89
AMPS	110.4	102.3	90.26	72.62	56.93	45.12	39.68

<b>TORQ(FL)#FT</b>	220.83	<b>TORQ(LR)%FL</b>	190.99	<b>TORQ(BD)%FL</b>	289.68
<b>AMPS(LR)</b>	577.76	<b>PF AT START</b>	0.32		

This motor is capable of two cold or one hot start with a maximum connected load inertia of 1400 Lb-Ft Sq (58.94 Kg-meter Sq)at 100% voltage, where the load torque varies with the square of the speed. Acceleration time with maximum inertia and the above load type is 26 seconds. Safe stall time at 100% voltage is 63 seconds cold, 31 seconds hot. Rotor inertia is 14.77 Lb-Ft Sq (0.62 Kg-meter Sq).

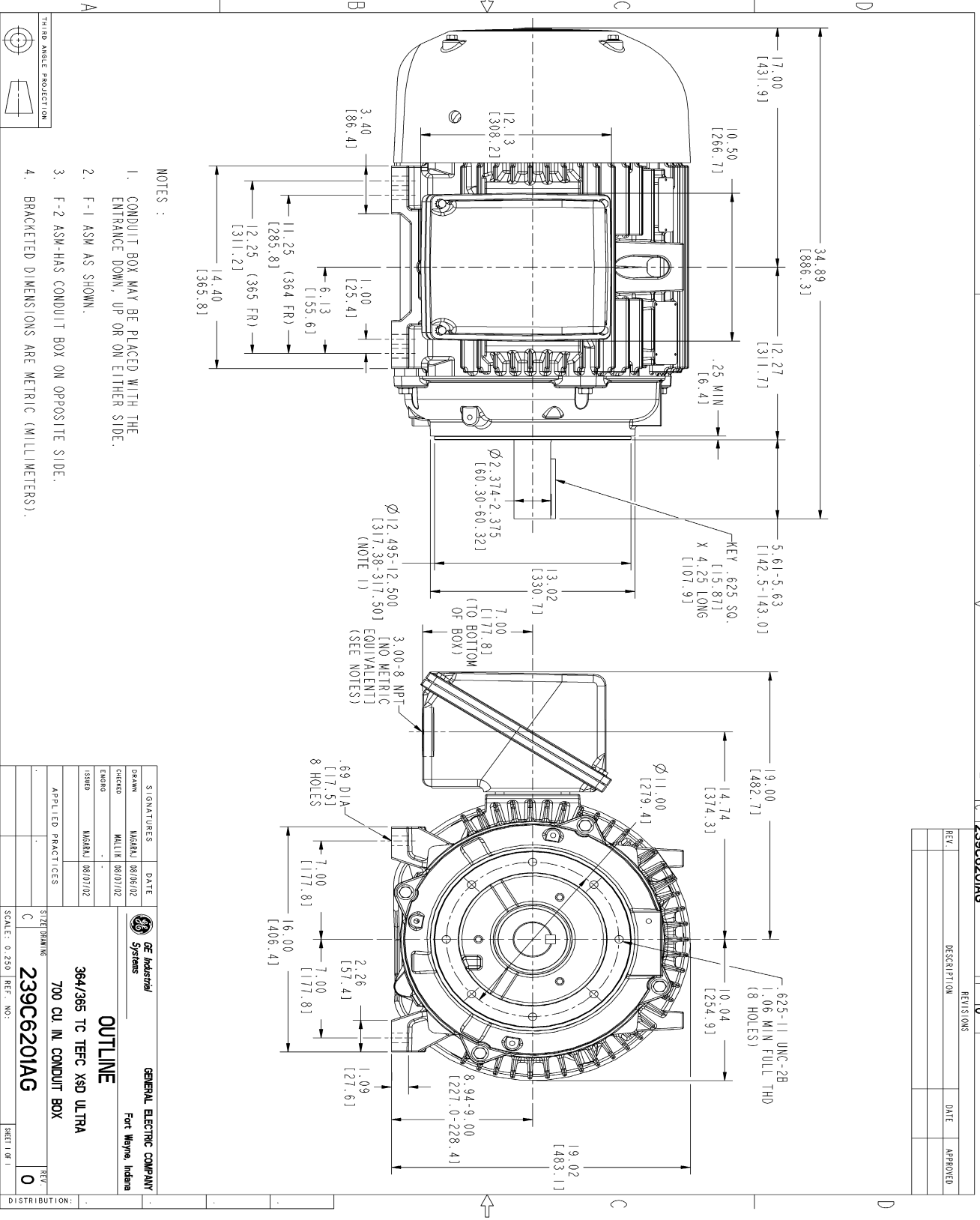
<b>Open Circuit A-C:</b>	0.594	<b>Short Circuit D-C:</b>	0.025
<b>Short Circuit A-C:</b>	0.034	<b>X/R Ratio:</b>	9.279
<b>Stator Slots:</b>	60	<b>Rotor Slots:</b>	50

**Speed Torque Current Curve (First Connection, First Speed)**



NAME: 90412 OBJECT: 239C6201AG DATE: 08-Aug-02 10:55:37

Marks:

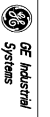


NOTES :

1. CONDUIT BOX MAY BE PLACED WITH THE ENTRANCE DOWN, UP OR ON EITHER SIDE.
2. F-1 ASM AS SHOWN.
3. F-2 ASM-HAS CONDUIT BOX ON OPPOSITE SIDE.
4. BRACKETED DIMENSIONS ARE METRIC (MILLIMETERS).

SIZE DRAWING NO. 239C6201AG  
REV 10

REV.	DESCRIPTION	DATE	APPROVED



GENERAL ELECTRIC COMPANY  
Fort Wayne, Indiana

SIGNATURES	DATE
DRAWN: W08RKL	06/05/02
CHECKED: MLLIKR	06/07/02
ENG'G:	
ISSUED: W08RKL	06/07/02

APPLIED PRACTICES

SCALE: 0.250 REF. NO.:

SIZE DRAWING: 239C6201AG

364/365 TC TFC XSD UL TRA  
700 CU. IN. CONDUIT BOX

DISTRIBUTION: SHEET 0F 1

Marks:

**Connection Diagram**  
**GEM2034E-FIG9**



End shield Assembly		
Part Description	DE Side Part#	ODE Side Part#
End Shield	115E4253AA1	115E4250LK1
Bearing	235A2516AC01	235A2516AC01
Slinger/Inproseal	149C4399G05	149C4399G05

Fan & Fan Cover Assembly	
Part Description	Part#
Fan	159C7100AA1
Fan Cover	128D6810AA1

Conduit & Accessories Box Assembly	
Part Description	Part#
Conduit Box	118D4408AD2

Mechanical Accessories	
Part Description	Part#
Brake	
Tachometer	