

# Product Information Packet

November 8, 2016

Data shown is for the current revision model #. Ensure your nameplate model # matches.

|                            |                      |
|----------------------------|----------------------|
| <b>Model Number:</b>       | <b>5KS326SAA405D</b> |
| <b>Catalog Number:</b>     | <b>M9177</b>         |
| <b>Instruction Manual:</b> | GEI-56128            |
| <b>Connection Diagram:</b> | GEM2034E-FIG9        |
| <b>Outline Drawing:</b>    | 239C6000AE           |

| Accessory Connection Diagrams |      |                              |      |
|-------------------------------|------|------------------------------|------|
| <b>Bearing Thermocouple:</b>  | None | <b>Heater:</b>               | None |
| <b>RTD:</b>                   | None | <b>Thermistor:</b>           | None |
| <b>Thermostat:</b>            | None | <b>Winding Thermocouple:</b> | None |
| <b>Bearing RTD:</b>           | None |                              |      |

## Table of Contents

|                             |    |
|-----------------------------|----|
| Specification               | 01 |
| Performance Characteristics | 02 |
| Outline Drawing             | 03 |
| Connection Drawing(s)       | 04 |
| Spare parts                 | 05 |



**Marks:**

|                            |                      |                               |         |
|----------------------------|----------------------|-------------------------------|---------|
| <b>MODEL NUMBER:</b>       | <b>5KS326SAA405D</b> | <b>Estimated Weight:</b>      | 670 Lbs |
| <b>Outline Drawing:</b>    | 239C6000AE           | <b>Time Rating:</b>           | CONT    |
| <b>Connection Diagram:</b> | GEM2034E-FIG9        | <b>Enclosure:</b>             | TEFC    |
| <b>Instruction Book:</b>   | GEI-56128            | <b>Encl Construction:</b>     | X\$D    |
| <b>Design Code:</b>        | 32BD4038A            | <b>Ambient Max(°C):</b>       | 40      |
| <b>Type:</b>               | KS                   | <b>Alt Ambient Max(°C):</b>   | 65      |
| <b>Frame:</b>              | 326T                 | <b>Insulation Class:</b>      | H       |
| <b>Phases:</b>             | 3                    | <b>NEMA Design:</b>           | B       |
| <b>Poles:</b>              | 8                    | <b>Nominal Efficiency:</b>    | 91.0 %  |
| <b>Output Power:</b>       | 25HP 18.5KW          | <b>Guaranteed Efficiency:</b> | 90.2    |
| <b>RPM:</b>                | 880                  | <b>3/4 Load Efficiency:</b>   | 91.6    |
| <b>Voltage:</b>            | 230/460              | <b>KVA Code:</b>              | G       |
| <b>Hertz:</b>              | 60                   | <b>Max KVAR:</b>              | 15.0    |
| <b>Amps - FL:</b>          | 75.6/37.8            | <b>Power Factor:</b>          | 68.0    |
| <b>Service Factor:</b>     | 1.15                 | <b>Bearing - DE:</b>          | 6312ZC3 |
| <b>Alt Service Factor:</b> | 1.00                 | <b>Bearing - ODE:</b>         | 6312ZC3 |

**Enclosure is Totally Enclosed Fan-Cooled**

**Stamped Nameplate Notes:**

STAMP NP249A5564P051 AS BELOW:  
 MODEL:5KS326SAA405D S/N: XXX  
 CSA CERTIFIED CSA09.2216219 FOR EX NA IIC 200 C GC  
 CL 1 ZONE2 AEX NA IIC 200C;CL 1 DIV2 GRP ABCD 200C  
 IN -40C <= AMB <= 40C, 1.0 SF ON SINE-WAVE PWR  
 SURF TEMP 260C AT 1.15SF ON SINE-WAVE PWR  
 OR 200C VT OR 260C CT OR 200C CHP PWM CONTROL  
 ALTERNATE RATING FOR PWM CONTROL 1.0SF 40C AMB  
 VT 0 - 60 HZ, CT 8.6-60 HZ, CHP 60-90 HZ.

**Additional Information:**

8P - T EXTN  
 346 CU IN - 3.00" NPT  
 OIL RESISTANT SLEEVING ON LEADS  
 F1 MOUNTING

**Performance Characteristics**

1st Winding 1st Connection

**Design: 32BD4038A**

**Marks:**

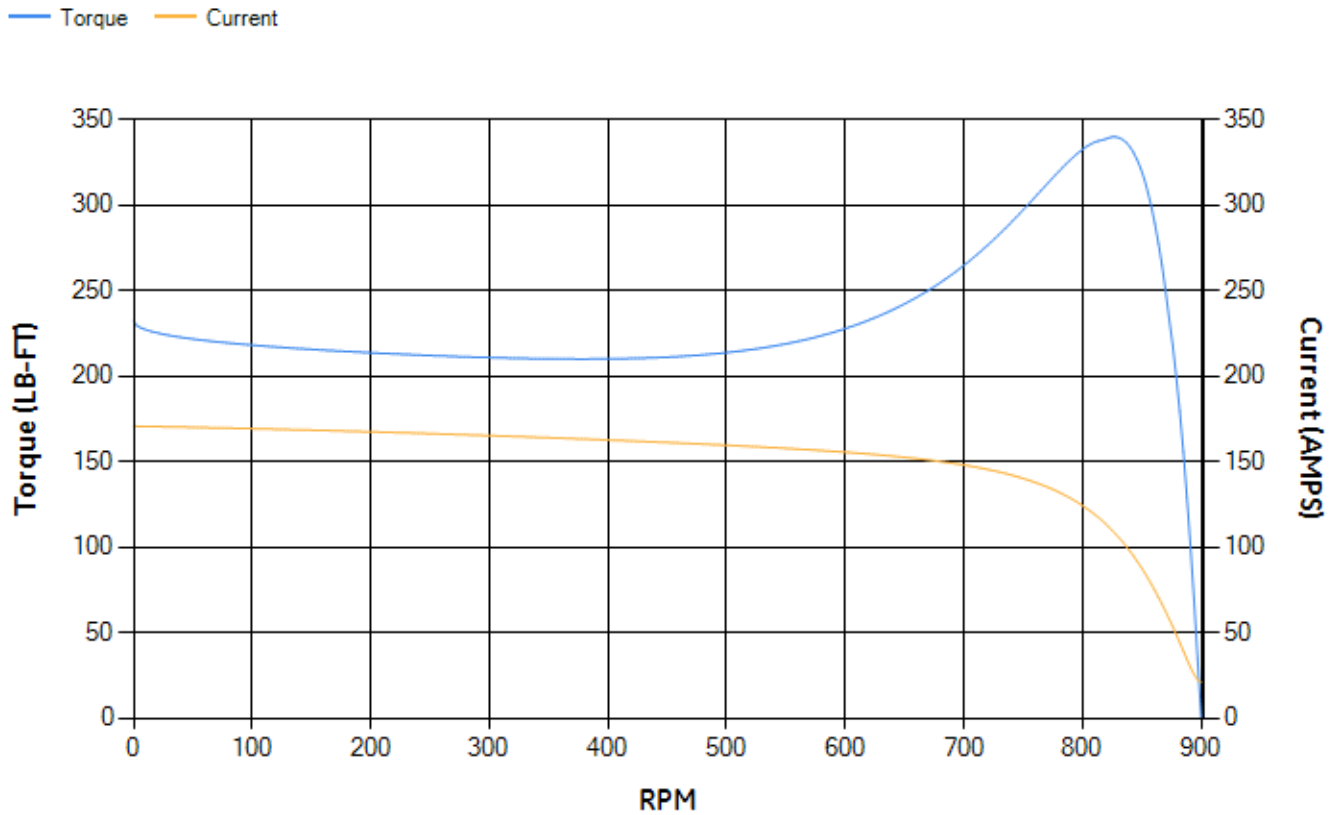
| LOAD % | 125.0 | 115.0 | 100.0 | 75.0  | 50.0  | 25.0  | 0.0  |
|--------|-------|-------|-------|-------|-------|-------|------|
| % EFF  | 89.92 | 90.45 | 91.26 | 91.55 | 90.89 | 86.51 | 0.00 |
| % PF   | 71.49 | 70.51 | 68.19 | 61.43 | 49.4  | 30.03 | 3.55 |
| AMPS   | 45.5  | 42.19 | 37.57 | 31.2  | 26.06 | 22.51 | 20.9 |

|                    |        |                    |        |                    |        |
|--------------------|--------|--------------------|--------|--------------------|--------|
| <b>TORQ(FL)#FT</b> | 149.18 | <b>TORQ(LR)%FL</b> | 155.61 | <b>TORQ(BD)%FL</b> | 225.71 |
| <b>AMPS(LR)</b>    | 170.6  | <b>PF AT START</b> | 0.34   |                    |        |

This motor is capable of two cold or one hot start with a maximum connected load inertia of 4026 Lb-Ft Sq (169.49 Kg-meter Sq)at 100% voltage, where the load torque varies with the square of the speed. Acceleration time with maximum inertia and the above load type is 62 seconds. Safe stall time at 100% voltage is 141 seconds cold, 75 seconds hot. Rotor inertia is 9.38 Lb-Ft Sq (0.39 Kg-meter Sq).

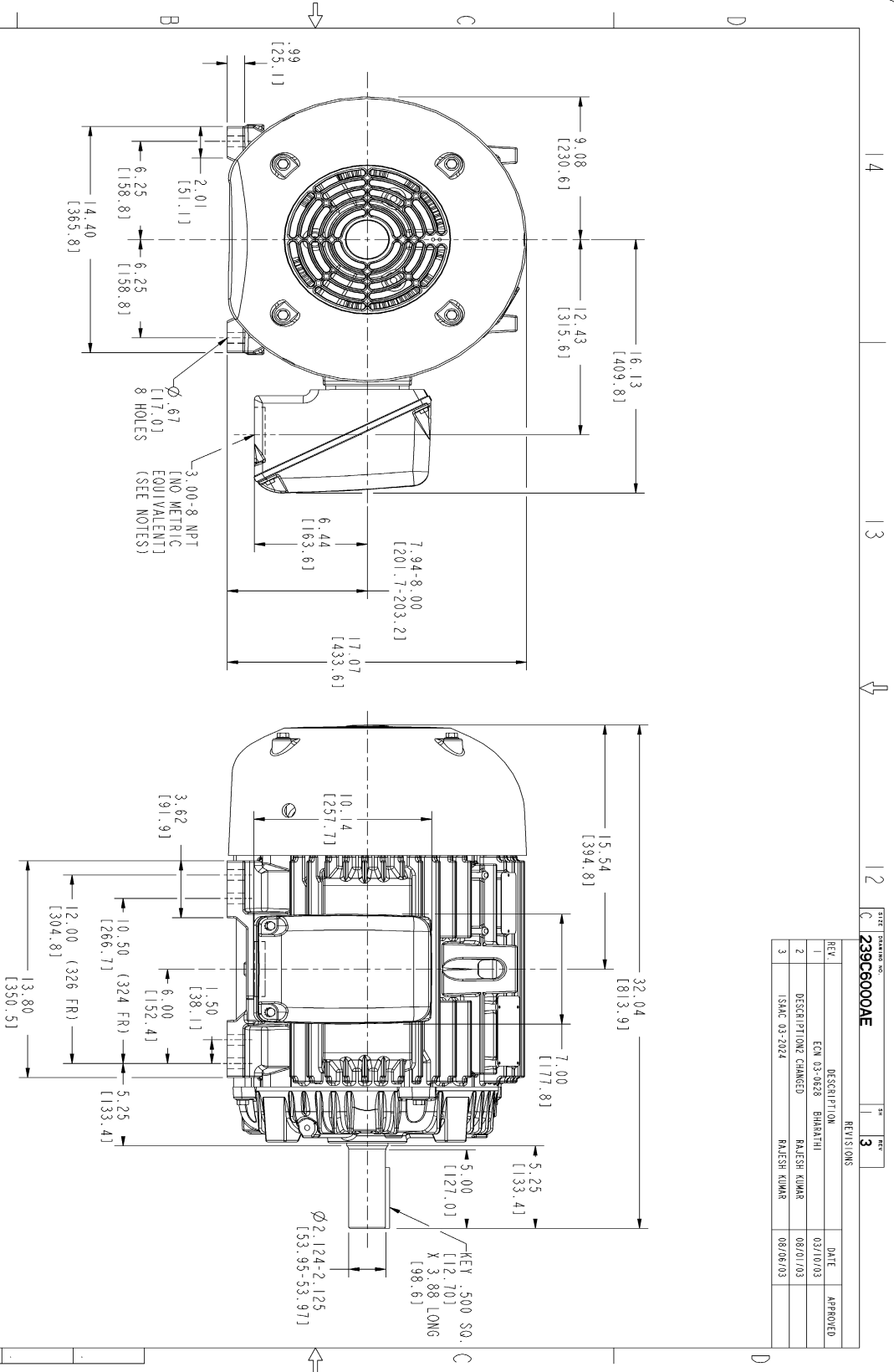
|                           |       |                           |       |
|---------------------------|-------|---------------------------|-------|
| <b>Open Circuit A-C:</b>  | 0.192 | <b>Short Circuit D-C:</b> | 0.018 |
| <b>Short Circuit A-C:</b> | 0.02  | <b>X/R Ratio:</b>         | 6.71  |
| <b>Stator Slots:</b>      | 54    | <b>Rotor Slots:</b>       | 40    |

**Speed Torque Current Curve (First Connection, First Speed)**



NAME: 103016807 OBJECT: 239C6000AE DATE: 07-Aug-03 23:25:11

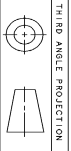
Marks:



| REVISIONS |                     | DATE     | APPROVED |
|-----------|---------------------|----------|----------|
| REV. 1    | DESCRIPTION         | 03/10/03 |          |
| 2         | DESCRIPTION CHANGED | 08/01/03 |          |
| 3         | ISSAC 03-2024       | 08/06/03 |          |

NOTES :

1. CONDUIT BOX MAY BE PLACED WITH THE ENTRANCE DOWN, UP OR ON EITHER SIDE.
2. F-1 ASM AS SHOWN.
3. F-2 ASM HAS CONDUIT BOX ON OPPOSITE SIDE.
4. BRACKETED DIMENSIONS ARE METRIC (MILLIMETERS).



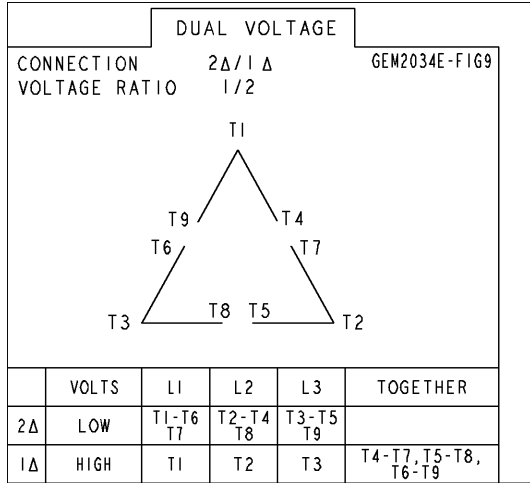
THIRD ANGLE PROJECTION

| SIGNATURES       | DATE     | GENERAL ELECTRIC COMPANY<br>Fort Wayne, Indiana         |  |
|------------------|----------|---|--|
| DESIGNER: WABRKL | 03/13/02 | <b>OUTLINE</b><br>346 CU. IN. CONDUIT BOX<br>239C6000AE |  |
| DRAWN: MANIYANAN | 03/13/02 |   |  |
| ISSUED: WABRKL   | 03/13/02 | APPLIED PRACTICES                                       |  |
| SCALE: 0.250     |          | REF. NO.:<br>SHEET OF 1                                 |  |

DISTRIBUTION: MMP

Marks:

**Connection Diagram**  
**GEM2034E-FIG9**



| End shield Assembly |               |                |
|---------------------|---------------|----------------|
| Part Description    | DE Side Part# | ODE Side Part# |
| End Shield          | 115E4200AA1   | 115E4200LA1    |
| Bearing             | 235A2609AA01  | 235A2609AA01   |
| Slinger/Inproseal   | 149C4399G04   | 149C4399G04    |

| Fan & Fan Cover Assembly |             |
|--------------------------|-------------|
| Part Description         | Part#       |
| Fan                      | 159C7000G01 |
| Fan Cover                | 128D6800AA1 |

| Conduit & Accessories Box Assembly |             |
|------------------------------------|-------------|
| Part Description                   | Part#       |
| Conduit Box                        | 149C4429AA2 |

| Mechanical Accessories |       |
|------------------------|-------|
| Part Description       | Part# |
| Brake                  |       |
| Tachometer             |       |

