

Product Information Packet

November 9, 2016

Data shown is for the current revision model #. Ensure your nameplate model # matches.

Model Number:	5KS364LAA304D
Catalog Number:	M7951
Instruction Manual:	GEI-56128
Connection Diagram:	GEM2034E-FIG1
Outline Drawing:	239CC200AA

Accessory Connection Diagrams			
Bearing Thermocouple:	None	Heater:	None
RTD:	None	Thermistor:	None
Thermostat:	None	Winding Thermocouple:	None
Bearing RTD:	None		

Table of Contents	
Specification	01
Performance Characteristics	02
Outline Drawing	03
Connection Drawing(s)	04

Marks:

MODEL NUMBER:	5KS364LAA304D	Estimated Weight:	970 Lbs
Outline Drawing:	239CC200AA	Time Rating:	CONT
Connection Diagram:	GEM2034E-FIG1	Enclosure:	TEFC
Instruction Book:	GEI-56128	Encl Construction:	SD
Design Code:	36BD3068B	Ambient Max(°C):	40
Type:	KS	Alt Ambient Max(°C):	--
Frame:	364T	Insulation Class:	F
Phases:	3	NEMA Design:	A
Poles:	6	Nominal Efficiency:	94.1 %
Output Power:	40HP 29.6KW	Guaranteed Efficiency:	93.0
RPM:	1190	3/4 Load Efficiency:	94.1
Voltage:	575	KVA Code:	G
Hertz:	60	Max KVAR:	17.9
Amps - FL:	40.5	Power Factor:	78.5
Service Factor:	1.15	Bearing - DE:	6314ZC3
Alt Service Factor:	--	Bearing - ODE:	6314ZC3

Enclosure is Totally Enclosed Fan-Cooled

Stamped Nameplate Notes:

INVERTER DUTY PER NEMA MG1 PART 31
 ALTERNATE RATING FOR PWM CONTROL:1.0SF 40C AMBIENT
 VAR TORQUE RANGE 0-60 HZ

Additional Information:

6P - T EXTN
 3/4" CU IN - 3.00" NPT
 OIL RESISTANT SLEEVING ON LEADS
 F1 MOUNTING
 VIBRATION LIMIT 0.15 INCH PER SEC

Performance Characteristics

1st Winding 1st Connection

Design: 36BD3068B

Marks:

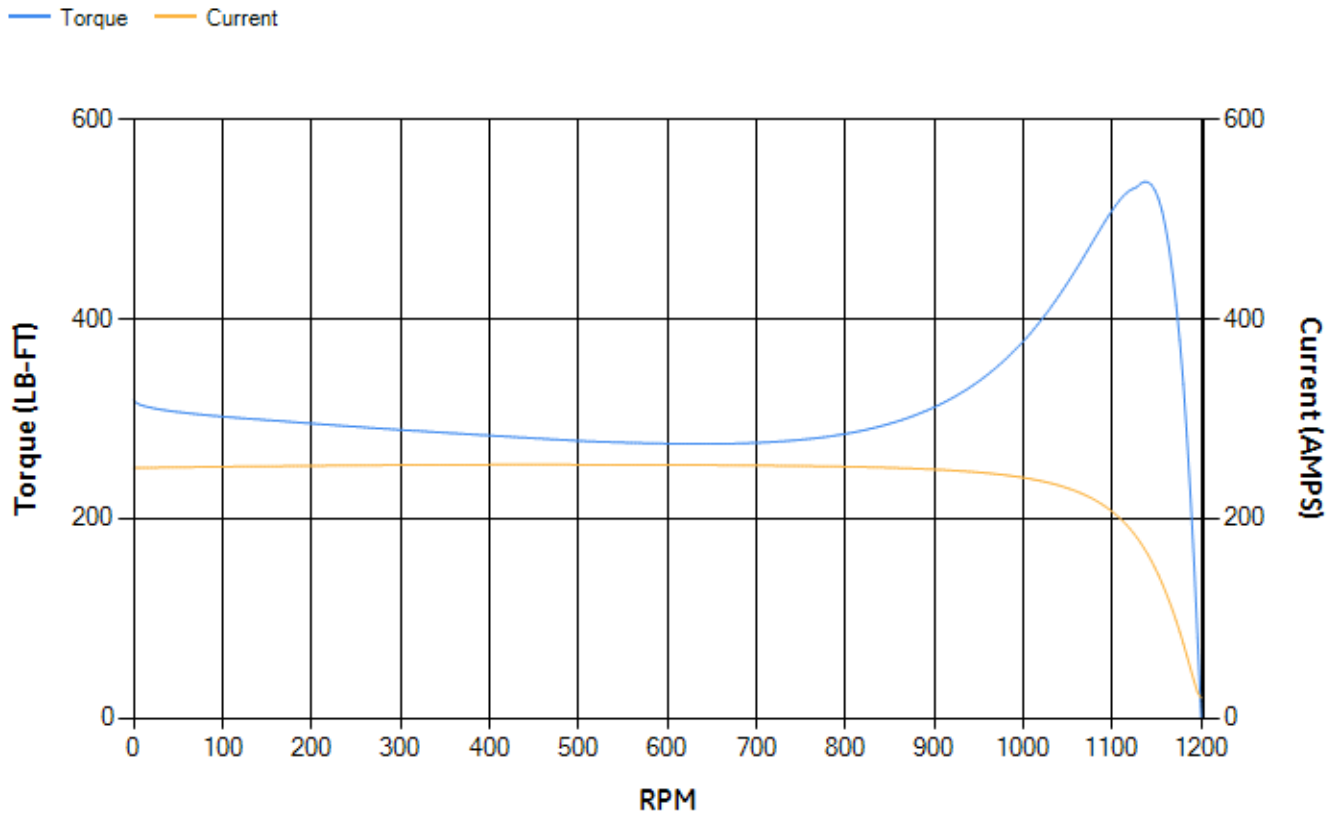
LOAD %	125.0	115.0	100.0	75.0	50.0	25.0	0.0
% EFF	93.46	93.69	94.17	94.12	93.51	90.15	0.00
% PF	82.16	81.04	78.71	72.23	60	37.66	3.35
AMPS	48.76	45.36	40.32	33.04	26.69	22.06	19.89

TORQ(FL)#FT	176.81	TORQ(LR)%FL	180.26	TORQ(BD)%FL	299.84
AMPS(LR)	250.58	PF AT START	0.38		

This motor is capable of two cold or one hot start with a maximum connected load inertia of 3236 Lb-Ft Sq (136.24 Kg-meter Sq)at 100% voltage, where the load torque varies with the square of the speed. Acceleration time with maximum inertia and the above load type is 49 seconds. Safe stall time at 100% voltage is 103 seconds cold, 64 seconds hot. Rotor inertia is 18.01 Lb-Ft Sq (0.76 Kg-meter Sq).

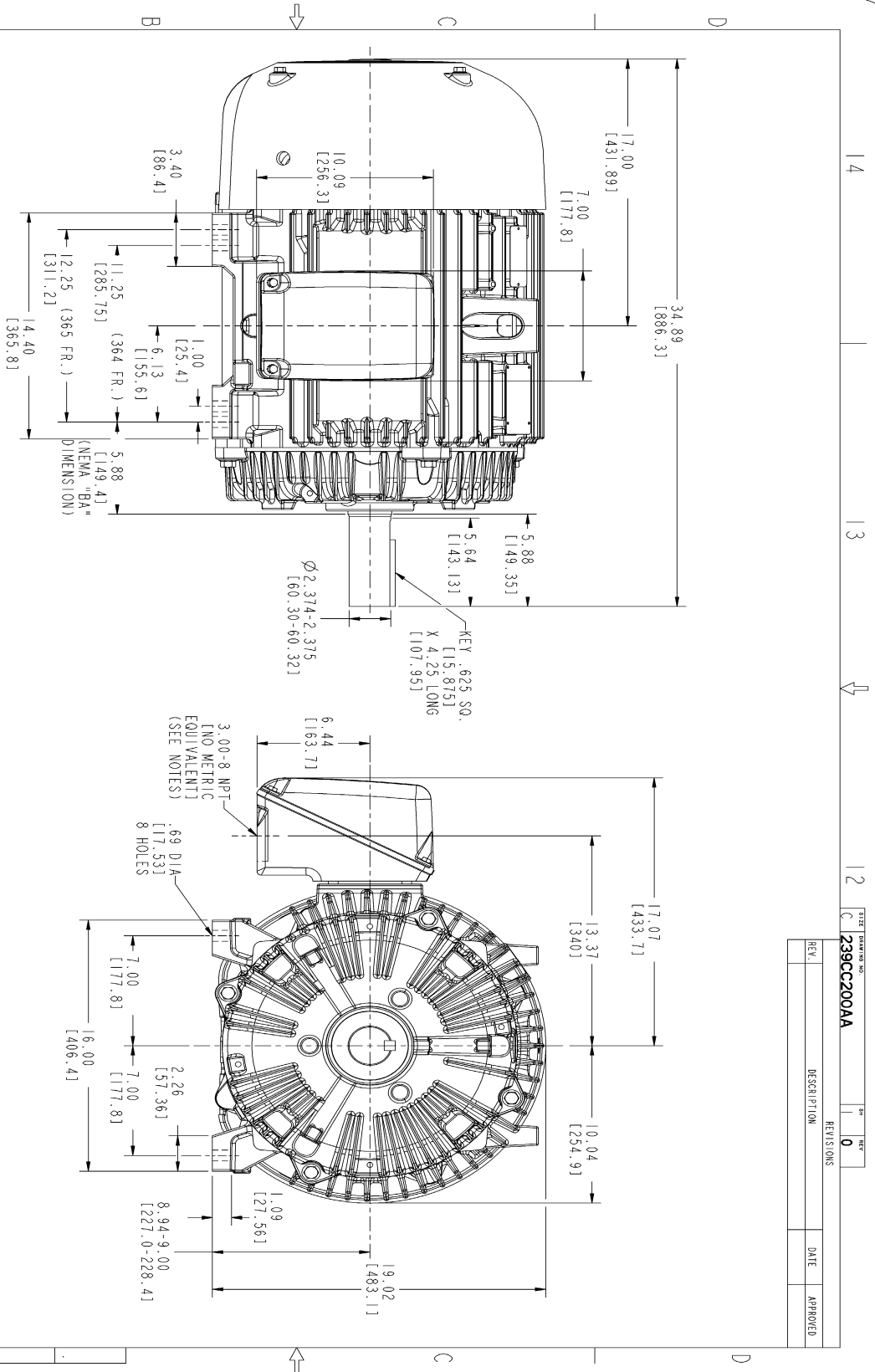
Open Circuit A-C:	0.474	Short Circuit D-C:	0.015
Short Circuit A-C:	0.028	X/R Ratio:	5.75
Stator Slots:	72	Rotor Slots:	58

Speed Torque Current Curve (First Connection, First Speed)



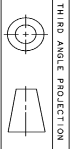
NAME:501352727 OBJECT:239CC200AA DATE:31-Jul-07 10:42:09

Marks:



NOTES :

1. CONDUIT BOX MAY BE PLACED WITH THE ENTRANCE DOWN, UP OR ON EITHER SIDE.
2. F-1 ASM AS SHOWN.
3. F-2 ASM-HAS CONDUIT BOX ON OPPOSITE SIDE.
4. BRACKETED DIMENSIONS ARE METRIC (MILLIMETERS).



REV.	DESCRIPTION	DATE	APPROVED

STAMP	DATE	DATE	DATE
DRAWN	SOUTHA 01/26/07		
CHECKED	SANJAY 01/26/07		
ENGINEER			
ISSUED	SOUTHA 01/26/07		
APPLIED PRACTICES			
SHEET DRAWING			
SCALE: 0.250	REF. NO:		
GENERAL ELECTRIC COMPANY Fort Wayne, Indiana OUTLINE 364/365 T TFC ESP 346 CU. IN. CONDUIT BOX 239CC200AA			
SHEET 1 OF 1	REV. 0		

DISTRIBUTION:

Marks:

Connection Diagram
GEM2034E-FIG1

