

Product Information Packet

November 8, 2016

Data shown is for the current revision model #. Ensure your nameplate model # matches.

Model Number:	5KS326XAA404D10
Catalog Number:	M9578
Instruction Manual:	GEI-56128
Connection Diagram:	GEM2034E-FIG7
Outline Drawing:	239C6000RJ

Accessory Connection Diagrams			
Bearing Thermocouple:	None	Heater:	None
RTD:	None	Thermistor:	None
Thermostat:	None	Winding Thermocouple:	None
Bearing RTD:	None		

Table of Contents

Specification	01
Performance Characteristics	02
Outline Drawing	03
Connection Drawing(s)	04
Spare parts	05



Marks:

MODEL NUMBER:	5KS326XAA404D10	Estimated Weight:	670 Lbs
Outline Drawing:	239C6000RJ	Time Rating:	CONT
Connection Diagram:	GEM2034E-FIG7	Enclosure:	TEFC
Instruction Book:	GEI-56128	Encl Construction:	841
Design Code:	32BD4038B	Ambient Max(°C):	40
Type:	KS	Alt Ambient Max(°C):	--
Frame:	326T	Insulation Class:	H
Phases:	3	NEMA Design:	B
Poles:	8	Nominal Efficiency:	91.0 %
Output Power:	25HP 18.5KW	Guaranteed Efficiency:	90.2
RPM:	880	3/4 Load Efficiency:	91.5
Voltage:	575	KVA Code:	G
Hertz:	60	Max KVAR:	15.0
Amps - FL:	30.3	Power Factor:	68.0
Service Factor:	1.15	Bearing - DE:	6312ZC3
Alt Service Factor:	--	Bearing - ODE:	6312ZC3

Enclosure is Totally Enclosed Fan-Cooled

Stamped Nameplate Notes:

IEEE-STD-841-2009
 DE BRG 60BC03JP30, ODE BRG 60BC03JP30
 STAMP NP249A5564P051 AS BELOW:
 MODEL:5KS326XAA404D10 S/N: XXX
 CSA CERTIFIED CSA09.2216219 FOR EX NA IIC 200 C GC
 CL 1 ZONE2 AEX NA IIC 200C;CL 1 DIV2 GRP ABCD 200C
 IN -25C <= AMB <= 40C, 1.0 SF ON SINE-WAVE PWR
 SURF TEMP 260C AT 1.15SF ON SINE-WAVE PWR
 OR 200C VT OR 230C CT OR 200C CHP PWM CONTROL
 ALTERNATE RATING FOR PWM CONTROL 1.0SF 40C AMB
 VT 0-60 HZ, CT 8.6-60 HZ, CHP 60-90 HZ.

Additional Information:

8P - T EXTN
 PAINTED FRAME ID & SHAFT,
 FAN COVER INSIDE & ODE E/S OUTSIDE
 346 CU IN - 3.00" NPT
 INPRO SEAL BOTH ENDS
 OIL RESISTANT SLEEVING ON LEADS
 .0015" TIR SHAFT RUNOUT
 ROUTINE TEST REPORT AND 5 POINT VIBRATION TEST
 REPORT INCLUDED IN C/B
 COPPER WASHER UNDER HEADS OF BEARING CAP BOLTS,
 APPLY TITE-SEAL (A50CD427A) ON BEARING CAP SCREWS,
 RABBETS AND PLUG THREADS.
 GROUND PAD
 F1 MOUNTING

Performance Characteristics

1st Winding 1st Connection

Design: 32BD4038B

Marks:

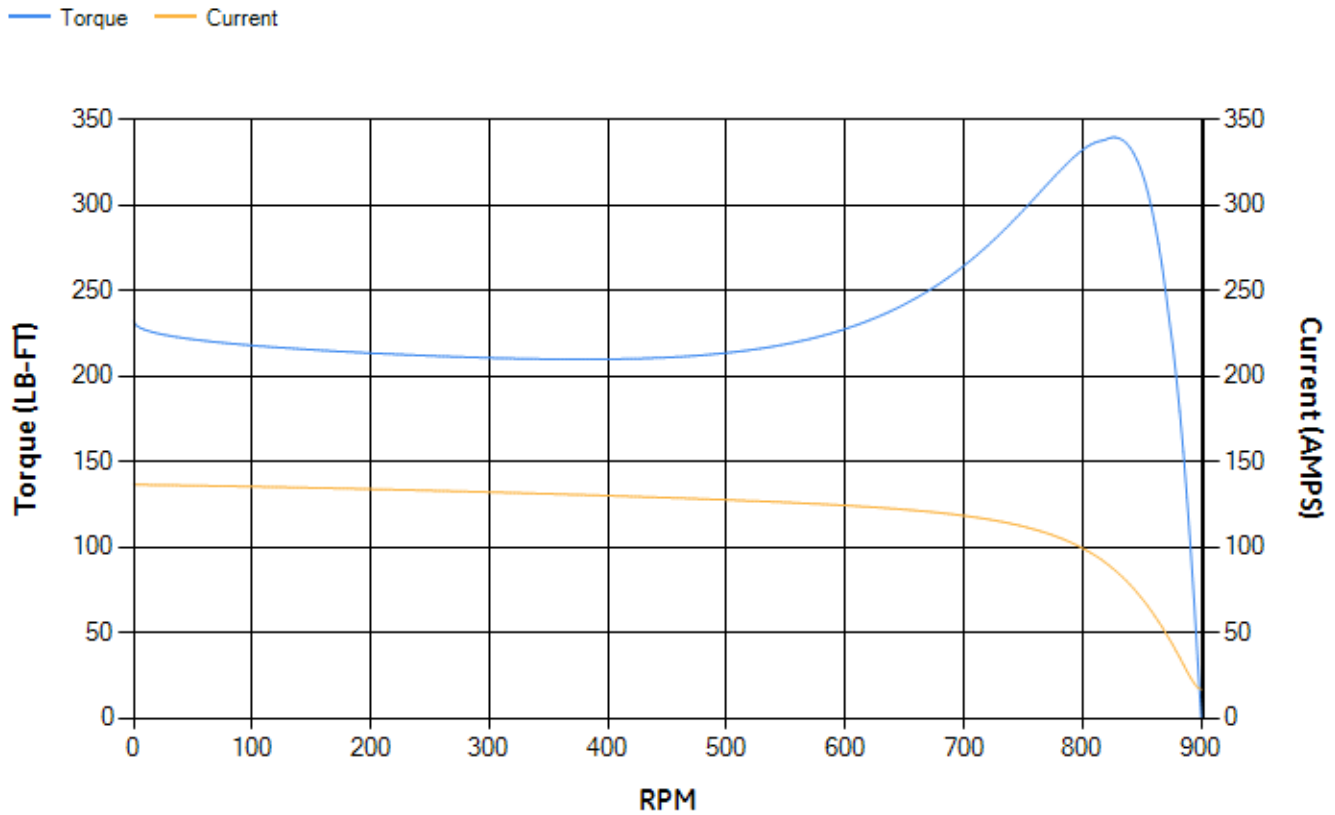
LOAD %	125.0	115.0	100.0	75.0	50.0	25.0	0.0
% EFF	89.86	90.4	91.22	91.51	90.85	86.46	0.00
% PF	71.52	70.53	68.22	61.46	49.42	30.05	3.56
AMPS	36.41	33.76	30.06	24.96	20.84	18.01	16.72

TORQ(FL)#FT	149.19	TORQ(LR)%FL	155.45	TORQ(BD)%FL	225.48
AMPS(LR)	136.41	PF AT START	0.34		

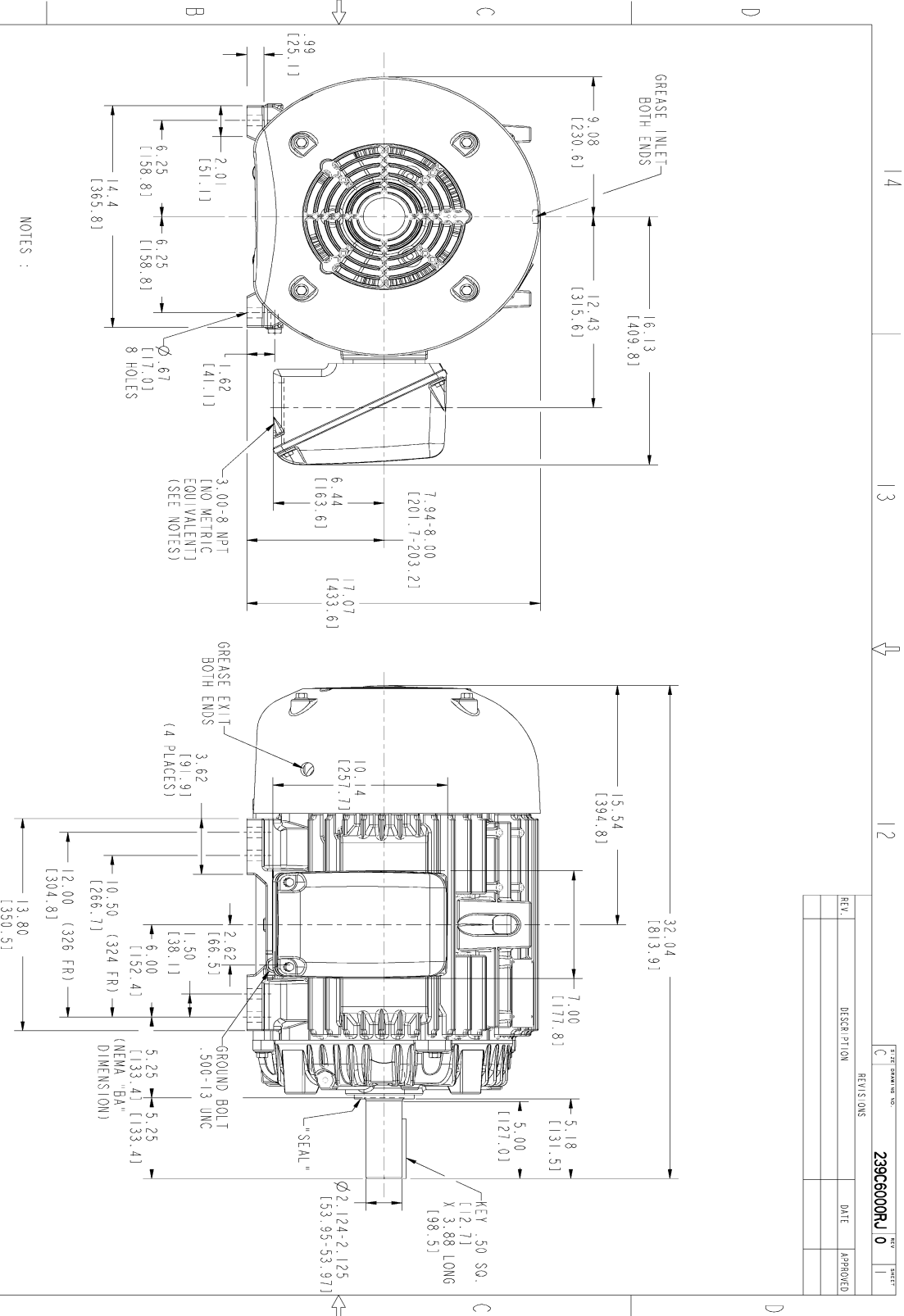
This motor is capable of two cold or one hot start with a maximum connected load inertia of 4004 Lb-Ft Sq (168.57 Kg-meter Sq)at 100% voltage, where the load torque varies with the square of the speed. Acceleration time with maximum inertia and the above load type is 62 seconds. Safe stall time at 100% voltage is 141 seconds cold, 74 seconds hot. Rotor inertia is 9.38 Lb-Ft Sq (0.39 Kg-meter Sq).

Open Circuit A-C:	0.191	Short Circuit D-C:	0.018
Short Circuit A-C:	0.02	X/R Ratio:	6.635
Stator Slots:	54	Rotor Slots:	40

Speed Torque Current Curve (First Connection, First Speed)



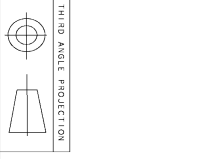
Marks:



NOTES :

1. CONDUIT BOX MAY BE PLACED WITH THE ENTRANCE DOWN, UP OR ON EITHER SIDE.
2. F-1 ASM AS SHOWN.
3. BRACKETED DIMENSIONS ARE METRIC (MILLIMETERS).
4. TOLERANCE ON PERMISSIBLE SHAFT EXTENSION RUNOUT IS .0015 T.I.R.

REV.	DESCRIPTION	DATE	APPROVED



THIRD ANGLE PROJECTION	14	13	12	11
------------------------	----	----	----	----

SIGNATURES		DATE	
MODEL	TEJASNI	06/19/15	
SCALE	TEJASNI	06/19/15	
TITLE			
OUTLINE			
324/326 T TFC XSD 94I			
346 CU IN CONDUIT BOX			
DESIGN	KANTHIK	06/19/15	
DRAWN	VENKAT	06/19/15	
CHKD			
ISSUED	TEJASNI	06/19/15	
SCALE: 0.250		REF. NO: 239C6000RJ	
SHEET 1 OF 1		REV 0	

SHEET NO. 0
REV 0
239C6000RJ

GENERAL ELECTRIC COMPANY

Marks:

Connection Diagram
GEM2034E-FIG7



End shield Assembly		
Part Description	DE Side Part#	ODE Side Part#
End Shield	115E4200AA1	115E4200LA1
Bearing	235A2609AA01	235A2609AA01
Slinger/Inproseal	235A4575GS2	235A4575GS2

Fan & Fan Cover Assembly	
Part Description	Part#
Fan	159C7000G01
Fan Cover	128D6800AA1

Conduit & Accessories Box Assembly	
Part Description	Part#
Conduit Box	149C4429AA2

Mechanical Accessories	
Part Description	Part#
Brake	
Tachometer	