

Product Information Packet

November 9, 2016

Data shown is for the current revision model #. Ensure your nameplate model # matches.

Model Number:	5KS449LAA124B
Catalog Number:	M7659
Instruction Manual:	GEI-56128
Connection Diagram:	GEM2034E-FIG20
Outline Drawing:	239CC801AB

Accessory Connection Diagrams			
Bearing Thermocouple:	None	Heater:	None
RTD:	None	Thermistor:	None
Thermostat:	None	Winding Thermocouple:	None
Bearing RTD:	None		

Table of Contents	
Specification	01
Performance Characteristics	02
Outline Drawing	03
Connection Drawing(s)	04

Marks:

MODEL NUMBER:	5KS449LAA124B	Estimated Weight:	2650 Lbs
Outline Drawing:	239CC801AB	Time Rating:	CONT
Connection Diagram:	GEM2034E-FIG20	Enclosure:	TEFC
Instruction Book:	GEI-56128	Encl Construction:	SD
Design Code:	49BD0088A	Ambient Max(°C):	40
Type:	KS	Alt Ambient Max(°C):	--
Frame:	449TSC	Insulation Class:	F
Phases:	3	NEMA Design:	A
Poles:	2	Nominal Efficiency:	95.8 %
Output Power:	300HP 222KW	Guaranteed Efficiency:	95.0
RPM:	3585	3/4 Load Efficiency:	95.6
Voltage:	460	KVA Code:	J
Hertz:	60	Max KVAR:	69.8
Amps - FL:	326.0	Power Factor:	90.0
Service Factor:	1.15	Bearing - DE:	6314ZC3
Alt Service Factor:	--	Bearing - ODE:	6314ZC3

Enclosure is Totally Enclosed Fan-Cooled

Stamped Nameplate Notes:

FOR DIRECT COUPLED LOAD ONLY
 INVERTER DUTY PER NEMA MG1 PART 31
 ALTERNATE RATING FOR PWM CONTROL:1.0SF 40C AMBIENT
 VAR TORQUE RANGE 0-60 HZ

Additional Information:

2P - TS EXTN - SPLIT LEAD
 C FACE ON DE
 1260 CU IN - 2(4.00" NPT)
 C/B GRD PLATE
 OIL RESISTANT SLEEVING ON LEADS
 F1 MOUNTING
 VIBRATION LIMIT 0.15 INCH PER SEC

Performance Characteristics

1st Winding 1st Connection

Design: 49BD0088A

Marks:

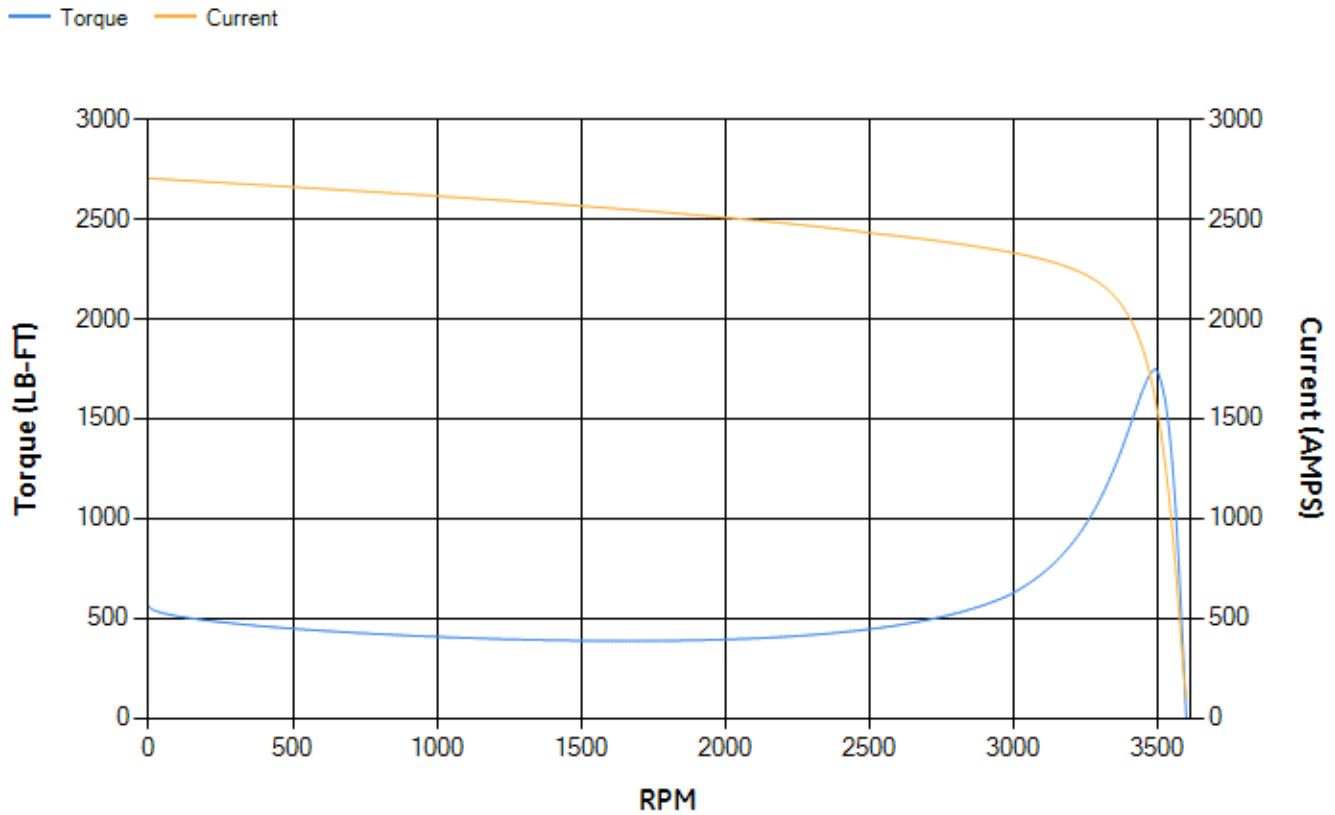
LOAD %	125.0	115.0	100.0	75.0	50.0	25.0	0.0
% EFF	95.68	95.75	96	95.64	94.83	91.59	0.00
% PF	91.28	90.98	90.22	87.5	80.58	60.57	6.04
AMPS	401.89	370.66	324.19	251.65	183.73	126.54	97.02

TORQ(FL)#FT	439.57	TORQ(LR)%FL	127.59	TORQ(BD)%FL	397.89
AMPS(LR)	2704.36	PF AT START	0.18		

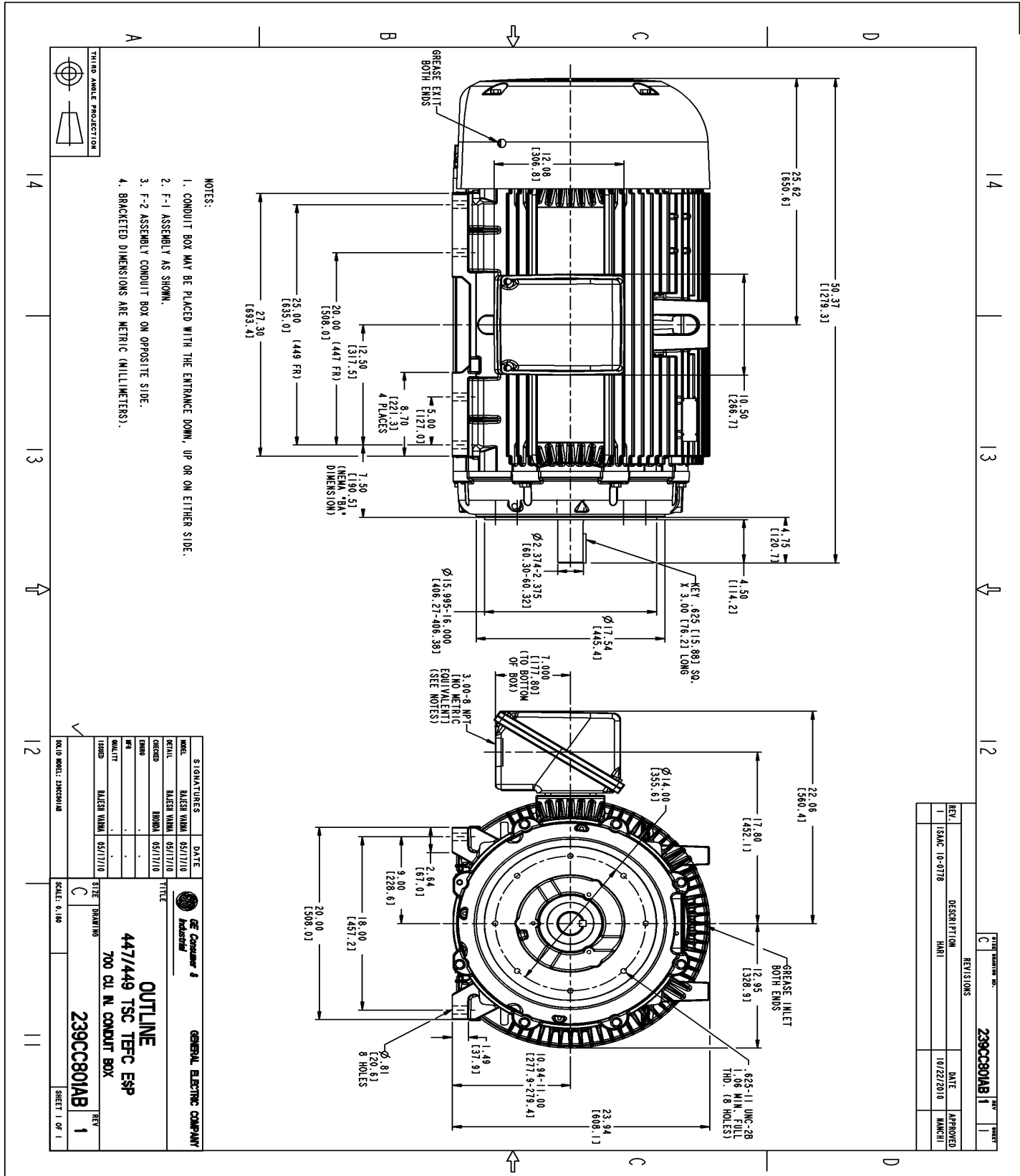
This motor is capable of two cold or one hot start with a maximum connected load inertia of 700 Lb-Ft Sq (29.47 Kg-meter Sq) at 100% voltage, where the load torque varies with the square of the speed. Acceleration time with maximum inertia and the above load type is 22 seconds. Safe stall time at 100% voltage is 59 seconds cold, 26 seconds hot. Rotor inertia is 43.07 Lb-Ft Sq (1.81 Kg-meter Sq).

Open Circuit A-C:	1.838	Short Circuit D-C:	0.036
Short Circuit A-C:	0.069	X/R Ratio:	13.64
Stator Slots:	48	Rotor Slots:	38

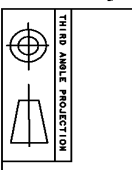
Speed Torque Current Curve (First Connection, First Speed)



Marks:



- NOTES:
1. CONDUIT BOX MAY BE PLACED WITH THE ENTRANCE DOWN, UP OR ON EITHER SIDE.
 2. F-1 ASSEMBLY AS SHOWN.
 3. F-2 ASSEMBLY CONDUIT BOX ON OPPOSITE SIDE.
 4. BRACKETED DIMENSIONS ARE METRIC (MILLIMETERS).



REV.	DESCRIPTION	DATE	APPROVED
1	ISAC 10-0718	10/22/2010	MANCH

SIGNATURES	DATE	TITLE
DESIGNER	05/17/10	
DRAWN	05/17/10	
CHECKED		
APPROVED		

GENERAL ELECTRIC COMPANY

447/449 TSC TFC ESP

700 CU. IN. CONDUIT BOX

239CC801AB

SCALE: 0.100

SHEET 1 OF 1

Marks:

Connection Diagram
GEM2034E-FIG20

