

# Product Information Packet

November 8, 2016

Data shown is for the current revision model #. Ensure your nameplate model # matches.

<b>Model Number:</b>	<b>5KS447XAA304D6</b>
<b>Catalog Number:</b>	<b>M9385</b>
<b>Instruction Manual:</b>	GEI-56128
<b>Connection Diagram:</b>	GEM2034E-FIG7
<b>Outline Drawing:</b>	239C6800VW

<b>Accessory Connection Diagrams</b>			
<b>Bearing Thermocouple:</b>	None	<b>Heater:</b>	None
<b>RTD:</b>	None	<b>Thermistor:</b>	None
<b>Thermostat:</b>	None	<b>Winding Thermocouple:</b>	None
<b>Bearing RTD:</b>	None		

## Table of Contents

Specification	01
Performance Characteristics	02
Outline Drawing	03
Connection Drawing(s)	04
Spare parts	05



**Marks:**

<b>MODEL NUMBER:</b>	<b>5KS447XAA304D6</b>	<b>Estimated Weight:</b>	2940 Lbs
<b>Outline Drawing:</b>	239C6800VW	<b>Time Rating:</b>	CONT
<b>Connection Diagram:</b>	GEM2034E-FIG7	<b>Enclosure:</b>	TEFC
<b>Instruction Book:</b>	GEI-56128	<b>Encl Construction:</b>	841
<b>Design Code:</b>	49BD3014B	<b>Ambient Max(°C):</b>	40
<b>Type:</b>	KS	<b>Alt Ambient Max(°C):</b>	--
<b>Frame:</b>	447T	<b>Insulation Class:</b>	H
<b>Phases:</b>	3	<b>NEMA Design:</b>	B
<b>Poles:</b>	6	<b>Nominal Efficiency:</b>	95.8 %
<b>Output Power:</b>	150HP 111KW	<b>Guaranteed Efficiency:</b>	95.4
<b>RPM:</b>	1190	<b>3/4 Load Efficiency:</b>	95.9
<b>Voltage:</b>	575	<b>KVA Code:</b>	G
<b>Hertz:</b>	60	<b>Max KVAR:</b>	37.9
<b>Amps - FL:</b>	136.0	<b>Power Factor:</b>	86.0
<b>Service Factor:</b>	1.15	<b>Bearing - DE:</b>	6318ZC3
<b>Alt Service Factor:</b>	--	<b>Bearing - ODE:</b>	6318ZC3

**Enclosure is Totally Enclosed Fan-Cooled**

**Stamped Nameplate Notes:**

IEEE-STD-841-2009  
 DE BRG 90BC03JP3, ODE BRG 90BC03JP3  
 STAMP NP249A5564P051 AS BELOW:  
 MODEL:5KS447XAA304D6 S/N: XXX  
 CSA CERTIFIED CSA09.2216219 FOR EX NA IIC 200 C GC  
 CL 1 ZONE2 AEX NA IIC 200C;CL 1 DIV2 GRP ABCD 200C  
 IN -25C <= AMB <= 40C, 1.0 SF ON SINE-WAVE PWR  
 SURF TEMP 200C AT 1.15SF ON SINE-WAVE PWR  
 OR 200C VT OR 215C CT OR 200C CHP PWM CONTROL  
 ALTERNATE RATING FOR PWM CONTROL 1.0SF 40C AMB  
 VT 0-60 HZ, CT 3-60 HZ, CHP 60-90 HZ.

**Additional Information:**

6P - T EXTN  
 PAINTED FRAME ID & SHAFT,  
 FAN COVER INSIDE & ODE E/S OUTSIDE  
 700 CU IN - 3.00" NPT WITH DRAIN HOLES  
 INPRO SEAL BOTH ENDS  
 OIL RESISTANT SLEEVING ON LEADS  
 .0015" TIR SHAFT RUNOUT  
 ROUTINE TEST REPORT AND 5 POINT VIBRATION TEST  
 REPORT INCLUDED IN C/B  
 COPPER WASHER UNDER HEADS OF BEARING CAP BOLTS,  
 APPLY TITE-SEAL (A50CD427A) ON BEARING CAP SCREWS,  
 RABBETS AND PLUG THREADS.  
 GROUND PAD  
 F1 MOUNTING



**Performance Characteristics**

1st Winding 1st Connection

**Design: 49BD3014B**

**Marks:**

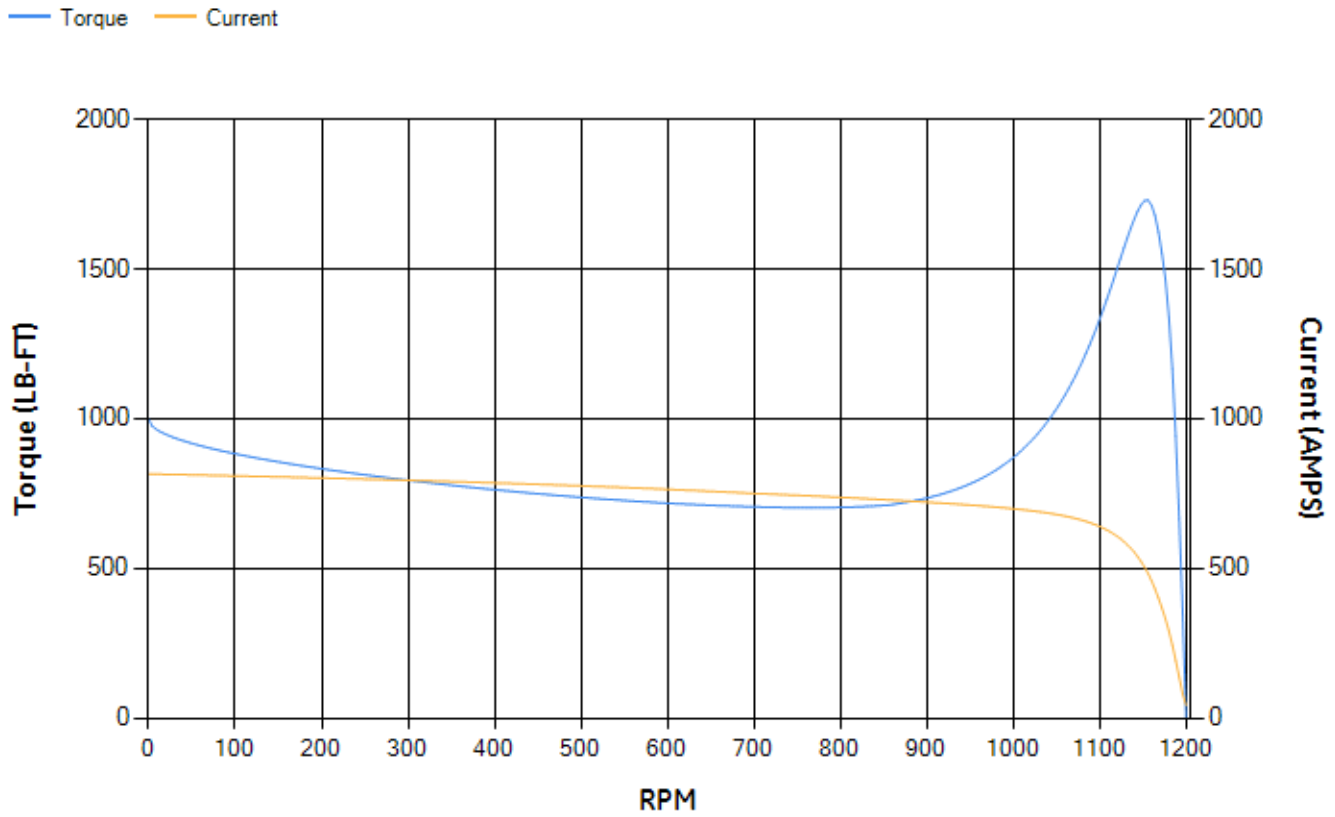
LOAD %	125.0	115.0	100.0	75.0	50.0	25.0	0.0
% EFF	95.12	95.35	95.84	95.91	95.68	93.67	0.00
% PF	86.57	86.49	85.95	83.3	76.02	55.48	3.82
AMPS	170.5	156.62	136.35	105.43	77.21	54.03	42.32

<b>TORQ(FL)#FT</b>	660.77	<b>TORQ(LR)%FL</b>	150.88	<b>TORQ(BD)%FL</b>	261.65
<b>AMPS(LR)</b>	815.26	<b>PF AT START</b>	0.27		

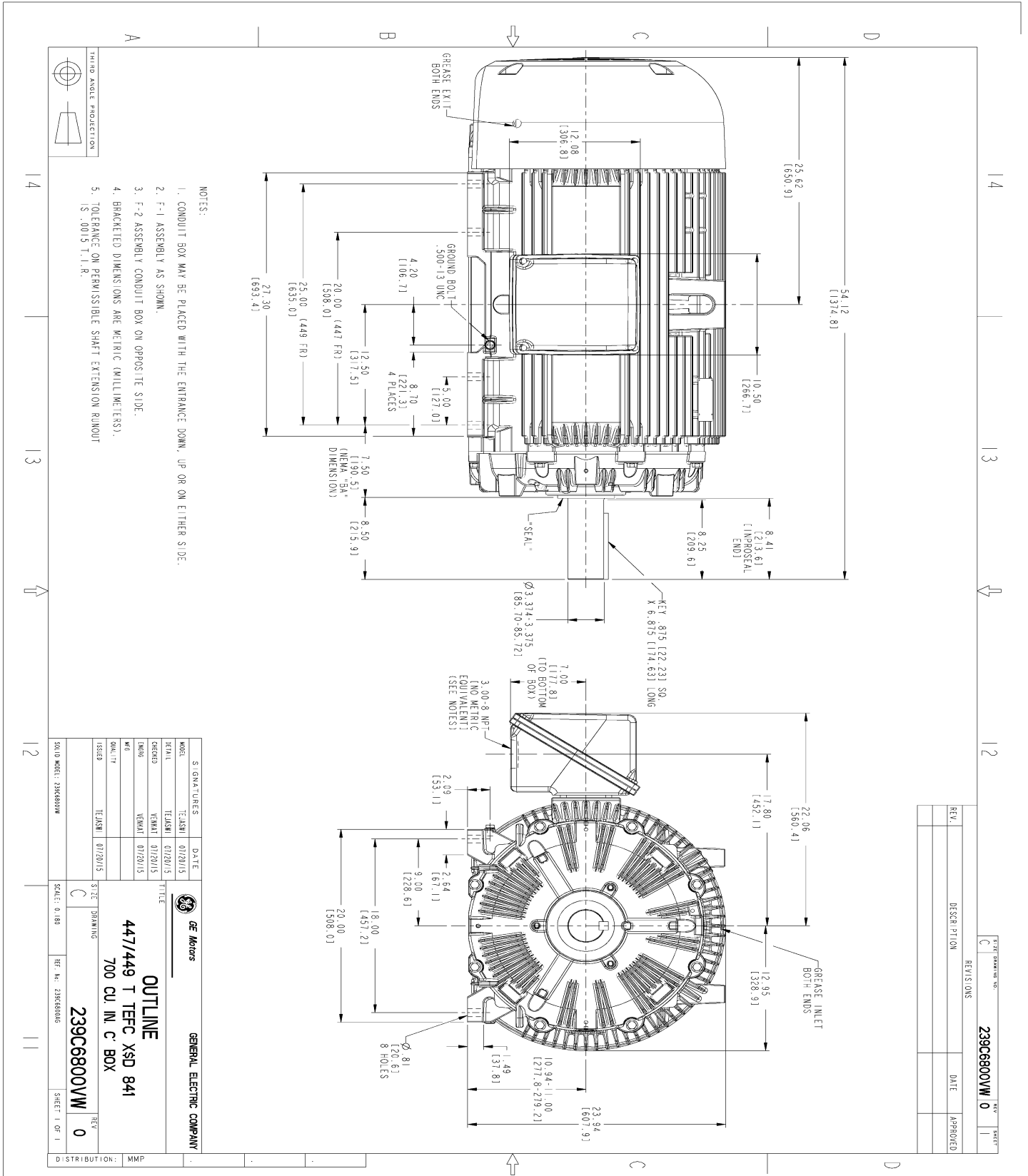
This motor is capable of two cold or one hot start with a maximum connected load inertia of 15234 Lb-Ft Sq (641.35 Kg-meter Sq)at 100% voltage, where the load torque varies with the square of the speed. Acceleration time with maximum inertia and the above load type is 95 seconds. Safe stall time at 100% voltage is 173 seconds cold, 114 seconds hot. Rotor inertia is 177.16 Lb-Ft Sq (7.46 Kg-meter Sq).

<b>Open Circuit A-C:</b>	1.243	<b>Short Circuit D-C:</b>	0.034
<b>Short Circuit A-C:</b>	0.059	<b>X/R Ratio:</b>	12.812
<b>Stator Slots:</b>	72	<b>Rotor Slots:</b>	58

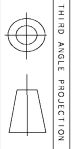
**Speed Torque Current Curve (First Connection, First Speed)**



Marks:



- NOTES:
1. CONDUIT BOX MAY BE PLACED WITH THE ENTRANCE DOWN, UP OR ON EITHER SIDE.
  2. F-1 ASSEMBLY AS SHOWN.
  3. F-2 ASSEMBLY CONDUIT BOX ON OPPOSITE SIDE.
  4. BRACKETED DIMENSIONS ARE METRIC (MILLIMETERS).
  5. TOLERANCE ON PERMISSIBLE SHAFT EXTENSION ROUNDOFF IS .0015 T.I.R.



REV.	DESCRIPTION	DATE	APPROVED

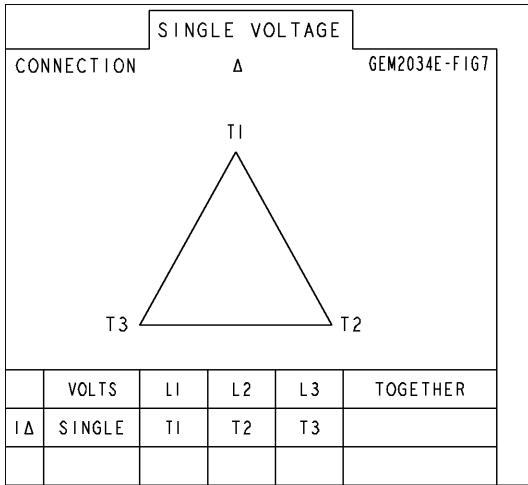
SIGNATURES		DATE	
DESIGNER	TEJASNI	DATE	01/20/15
CHECKED	TEJASNI	DATE	01/20/15
DATE	TEJASNI	DATE	01/20/15
QUALITY	TEJASNI	DATE	01/20/15
ISSUED	TEJASNI	DATE	01/20/15
SCALE: 0.180		SCALE: 0.180	
REF. NO. 239C6800VW		REF. NO. 239C6800VW	
SHEET 1 OF 1		SHEET 1 OF 1	

**GENERAL ELECTRIC COMPANY**  
**OUTLINE**  
**447/449 T TFC XSD 841**  
**700 CU. IN. C. BOX**  
**239C6800VW**

DISTRIBUTION: MMP

Marks:

**Connection Diagram**  
**GEM2034E-FIG7**



End shield Assembly		
Part Description	DE Side Part#	ODE Side Part#
End Shield	115E4355AA1	115E4355LM1
Bearing	235A2514AG01	235A2514AG01
Slinger/Inproseal	235A4575GS5	235A4575GS5

Fan & Fan Cover Assembly	
Part Description	Part#
Fan	159C7100G03
Fan Cover	128D6841AA1

Conduit & Accessories Box Assembly	
Part Description	Part#
Conduit Box	118D4408DG2

Mechanical Accessories	
Part Description	Part#
Brake	
Tachometer	