

Product Information Packet

January 13, 2017

Data shown is for the current revision model #. Ensure your nameplate model # matches.

Model Number:	5KS286SAE6032C
Catalog Number:	V908
Instruction Manual:	GEK-95351
Connection Diagram:	GEM2034E-FIG9
Outline Drawing:	4002B5828PMP5335

Accessory Connection Diagrams			
Bearing Thermocouple:	None	Heater:	3027JE-1
RTD:	None	Thermistor:	None
Thermostat:	None	Winding Thermocouple:	None
Bearing RTD:	None		

Table of Contents	
Specification	01
Performance Characteristics	02
Outline Drawing	03
Connection Drawing(s)	04



Marks:

MODEL NUMBER:	5KS286SAE6032C	Estimated Weight:	510 Lbs
Outline Drawing:	4002B5828PMP5335	Time Rating:	CONT
Connection Diagram:	GEM2034E-FIG9	Enclosure:	TEFC
Instruction Book:	GEK-95351	Encl Construction:	SD
Design Code:	28BD1157A	Ambient Max(°C):	40
Type:	KS	Alt Ambient Max(°C):	65
Frame:	L286TP16	Insulation Class:	H
Phases:	3	NEMA Design:	B
Poles:	4	Nominal Efficiency:	93.6 %
Output Power:	30HP 22.2KW	Guaranteed Efficiency:	92.4
RPM:	1775	3/4 Load Efficiency:	94.1
Voltage:	230/460	KVA Code:	G
Hertz:	60	Max KVAR:	8.2
Amps - FL:	69.8/34.9	Power Factor:	86.0
Service Factor:	1.15	Bearing - DE:	7310
Alt Service Factor:	1.00	Bearing - ODE:	6210-2ZC3

Enclosure is Totally Enclosed Fan-Cooled

Stamped Nameplate Notes:

PREMIUM EFFICIENT MOTOR
 ROT CCW FACING ODE LEAD/PH SEQUENCE 1-2-3/1-2-3
 HTR LDS H 115V 60W
 SEVERE DUTY
 INVERTER DUTY PER NEMA MG1 PART 31
 ALTERNATE RATING FOR PWM CONTROL:
 1.0 SF VAR TORQUE RANGE 20-60 HZ

Additional Information:

4P - TP EXTN
 C/BOX 137 CU IN-1.50 NPT
 HEATER LEADS EXIT WITH MOTOR LEADS
 E/SHLD GROUND STUD MTD ON DE C/BOX SIDE
 RCF 5000 CPM, STATIC DEFLECTION .0014 INCHES &
 CENTER OF GRAVITY 12.00 INCHES
 HOLLOW SHAFT HIGH THRUST
 COUPLING NOT INCLUDED IN BOM, WILL BE
 ORDERED SEPERATELY
 LEADS NUMBERED 1,2,3 - CCW ROTN FROM ODE
 OIL RESISTANT SLEEVING ON LEADS
 BEARING LIFE 8760 HOURS AT 2959 LB THRUST
 FCSD CET PROJECT 06/10/2015
 ENGINEERED BY: BALASUBRAMANIANH



Performance Characteristics

1st Winding 1st Connection

Design: 28BD1157A

Marks:

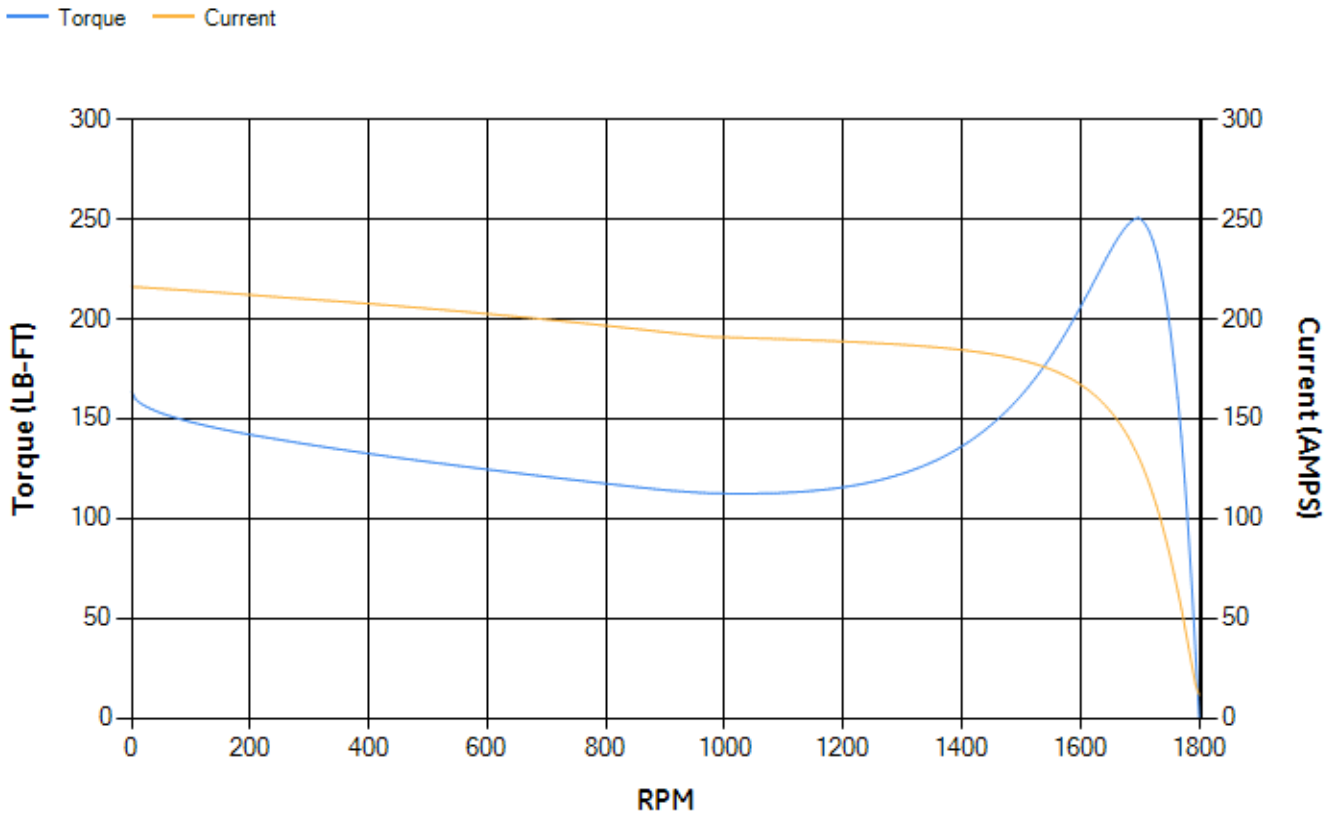
LOAD %	125.0	115.0	100.0	75.0	50.0	25.0	0.0
% EFF	92.5	92.93	93.68	94.1	94.05	91.75	0.00
% PF	86.93	86.75	86.04	82.98	75.01	53.73	4.5
AMPS	43.65	40.05	34.82	26.97	19.9	14.24	11.48

TORQ(FL)#FT	88.62	TORQ(LR)%FL	184.78	TORQ(BD)%FL	281.75
AMPS(LR)	216.09	PF AT START	0.38		

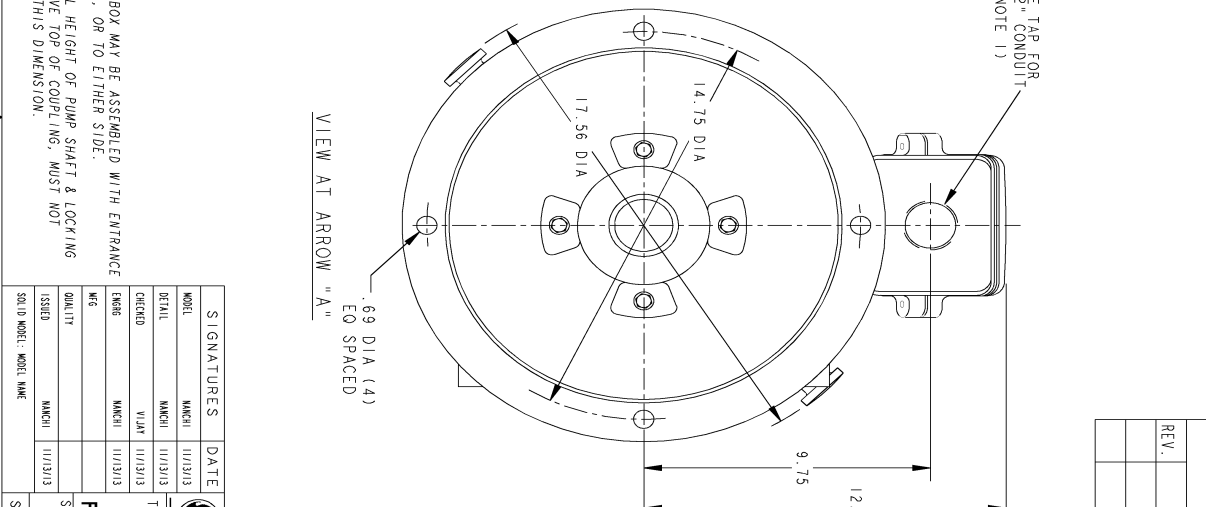
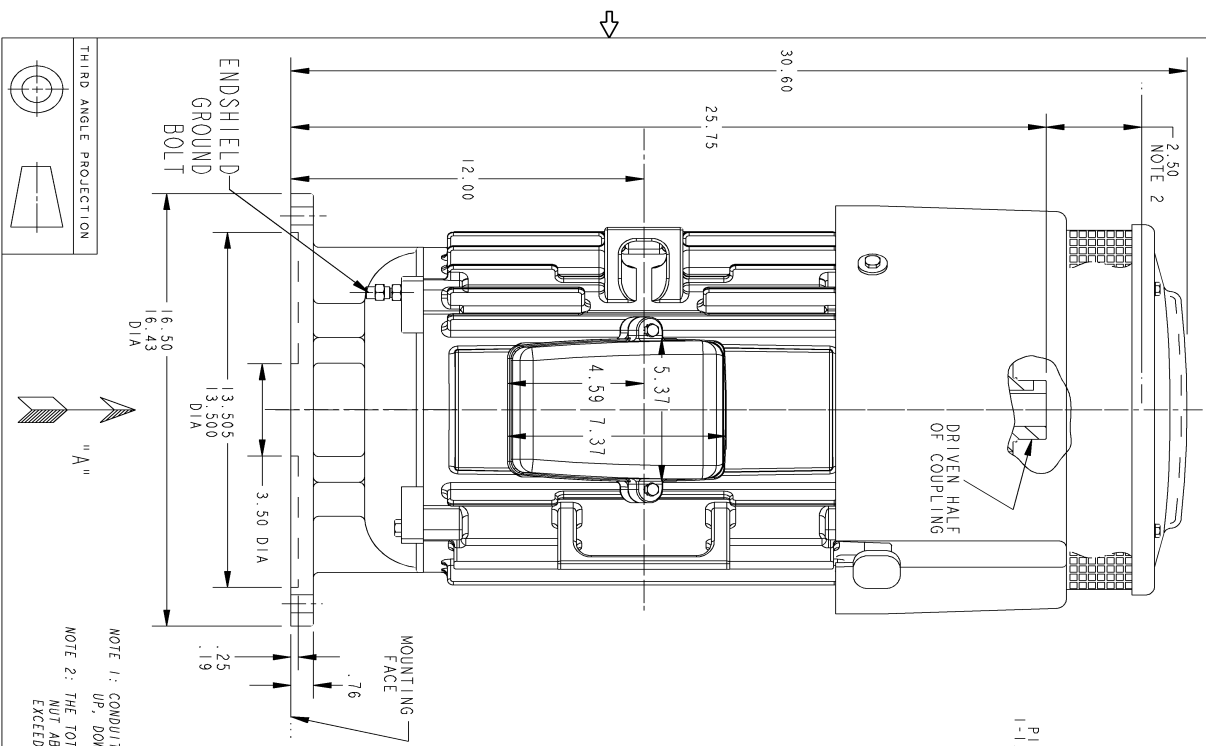
This motor is capable of two cold or one hot start with a maximum connected load inertia of 969 Lb-Ft Sq (40.79 Kg-meter Sq) at 100% voltage, where the load torque varies with the square of the speed. Acceleration time with maximum inertia and the above load type is 51 seconds. Safe stall time at 100% voltage is 90 seconds cold, 61 seconds hot. Rotor inertia is 5.44 Lb-Ft Sq (0.23 Kg-meter Sq).

Open Circuit A-C:	0.635	Short Circuit D-C:	0.016
Short Circuit A-C:	0.027	X/R Ratio:	5.921
Stator Slots:	48	Rotor Slots:	40

Speed Torque Current Curve (First Connection, First Speed)



Marks:



SIGNATURES		DATE	
MODEL	MANCHI	11/13/13	
DETAIL	MANCHI	11/13/13	
DESIGNED	VIJAY	11/13/13	
ENGR	MANCHI	11/13/13	
ISSUED	MANCHI	11/13/13	
SOLD MODEL	MODEL NAME		

GE Motors
GENERAL ELECTRIC COMPANY

OUTLINE
HOLLOW SHAFT - HIGH THRUST
FR280 TFC STD. P" BASE (BD-16) EKT ON DE SIDE
4002B5828PMP5335

SCALE: DRAWING SCALE
 SHEET 1 OF 1

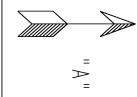
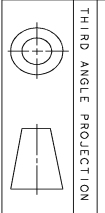
COUPLING KIT	RPM	BORE DIA.		KEYWAY	
		"B1"	"B2"	"W"	"D"
4002B5528AB BOLTED OR SELF-RELEASE	3600				
	GR.1	GR.8	1/4-20	1.750	1.252
	GR.2	GR.9	1/4-20	1.750	1.251
	GR.3	GR.10			1.189
	GR.4	GR.11	#10-32	1.375	1.002
	GR.5	GR.12			1.001
	GR.7	GR.14	1/4-20	1.750	.876
4002B5528AA NON-REVERSE	3600				
	GR.1	GR.8	1/4-20	1.750	1.252
	GR.2	GR.9	1/4-20	1.750	1.251
	GR.3	GR.10			1.188
	GR.4	GR.11	#10-32	1.375	1.002
	GR.5	GR.12			1.001
	GR.7	GR.14	1/4-20	1.750	.876

REV.	DESCRIPTION	DATE	APPROVED

REVISIONS

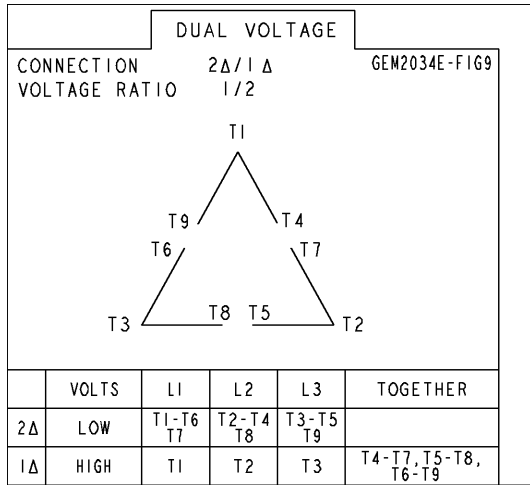
SIZE: DRAWING NO. **4002B5828PMP5335** SHEET **0**

NOTE 1: CONDUIT BOX MAY BE ASSEMBLED WITH ENTRANCE UP, DOWN, OR TO EITHER SIDE.
 NOTE 2: THE TOTAL HEIGHT OF PUMP SHAFT & LOCKING NUT ABOVE TOP OF COUPLING, MUST NOT EXCEED THIS DIMENSION.



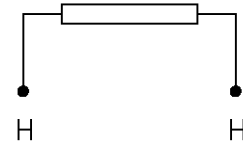
Marks:

Connection Diagram
GEM2034E-FIG9



Heater Connection
3027JE-1

FIG. 1
HEATER CONN.



CONTROL	L1	L2
VOLTAGE ONLY	H	H