

Product Information Packet

January 13, 2017

Data shown is for the current revision model #. Ensure your nameplate model # matches.

| | |
|----------------------------|-----------------------|
| Model Number: | 5KS215SAE6025A |
| Catalog Number: | V903 |
| Instruction Manual: | GEK-95351 |
| Connection Diagram: | GEM2034E-FIG9 |
| Outline Drawing: | 4002B5821PMP5323 |

Accessory Connection Diagrams

| | | | |
|------------------------------|------|------------------------------|----------|
| Bearing Thermocouple: | None | Heater: | 3027JE-1 |
| RTD: | None | Thermistor: | None |
| Thermostat: | None | Winding Thermocouple: | None |
| Bearing RTD: | None | | |

Table of Contents

| | |
|-----------------------------|----|
| Specification | 01 |
| Performance Characteristics | 02 |
| Outline Drawing | 03 |
| Connection Drawing(s) | 04 |



imagination at work

Marks:

| | | | |
|----------------------------|-----------------------|-------------------------------|-----------|
| MODEL NUMBER: | 5KS215SAE6025A | Estimated Weight: | 220 Lbs |
| Outline Drawing: | 4002B5821PMP5323 | Time Rating: | CONT |
| Connection Diagram: | GEM2034E-FIG9 | Enclosure: | TEFC |
| Instruction Book: | GEK-95351 | Encl Construction: | SD |
| Design Code: | 21BD1134A | Ambient Max(°C): | 40 |
| Type: | KS | Alt Ambient Max(°C): | 65 |
| Frame: | L215TP10 | Insulation Class: | H |
| Phases: | 3 | NEMA Design: | B |
| Poles: | 4 | Nominal Efficiency: | 91.7 % |
| Output Power: | 10HP 7.4KW | Guaranteed Efficiency: | 90.2 |
| RPM: | 1765 | 3/4 Load Efficiency: | 92.3 |
| Voltage: | 230/460 | KVA Code: | H |
| Hertz: | 60 | Max KVAR: | 3.0 |
| Amps - FL: | 24.4/12.2 | Power Factor: | 83.5 |
| Service Factor: | 1.15 | Bearing - DE: | 7308 |
| Alt Service Factor: | 1.00 | Bearing - ODE: | 6208-2ZC3 |

Enclosure is Totally Enclosed Fan-Cooled

Stamped Nameplate Notes:

PREMIUM EFFICIENT MOTOR
 ROT CCW FACING ODE LEAD/PH SEQUENCE 1-2-3/1-2-3
 HTR LDS H 115V 60W
 SEVERE DUTY
 INVERTER DUTY PER NEMA MG1 PART 31
 ALTERNATE RATING FOR PWM CONTROL:
 1.0 SF VAR TORQUE RANGE 20-60 HZ
 50HZ DATA:7.5 HP 190/380 V WITH FLA-22.4/11.2 A

Additional Information:

4P - TP EXTN
 C/BOX 55 CU IN-1.00 NPT
 HEATER LEADS EXIT WITH MOTOR LEADS
 E/SHLD GROUND STUD MTD ON DE C/BOX SIDE
 RCF 5000 CPM, STATIC DEFLECTION .0014 INCHES &
 CENTER OF GRAVITY 8.59 INCHES
 HOLLOW SHAFT HIGH THRUST
 LEADS NUMBERED 1,2,3 - CCW ROTN FROM ODE
 OIL RESISTANT SLEEVING ON LEADS
 BEARING LIFE 8760 HOURS AT 2065 LB THRUST
 COUPLING NOT INCLUDED IN BOM, WILL BE
 ORDERED SEPERATELY



Performance Characteristics

1st Winding 1st Connection

Design: 21BD1134A**Marks:**

| LOAD % | 125.0 | 115.0 | 100.0 | 75.0 | 50.0 | 25.0 | 0.0 |
|--------|-------|-------|-------|-------|-------|-------|------|
| % EFF | 90.28 | 90.86 | 91.78 | 92.33 | 92.15 | 88.91 | 0.00 |
| % PF | 84.32 | 84.28 | 83.68 | 80.6 | 72.42 | 51.52 | 5.88 |
| AMPS | 15.37 | 14.06 | 12.19 | 9.43 | 7.01 | 5.11 | 4.17 |

TORQ(FL)#FT 29.72
AMPS(LR) 79.12

TORQ(LR)%FL 190.93
PF AT START 0.4

TORQ(BD)%FL 273.62

This motor is capable of two cold or one hot start with a maximum connected load inertia of 338 Lb-Ft Sq (14.23 Kg-meter Sq) at 100% voltage, where the load torque varies with the square of the speed. Acceleration time with maximum inertia and the above load type is 46 seconds. Safe stall time at 100% voltage is 102 seconds cold, 68 seconds hot. Rotor inertia is 1.13 Lb-Ft Sq (0.05 Kg-meter Sq).

Open Circuit A-C: 0.422

Short Circuit D-C: 0.013

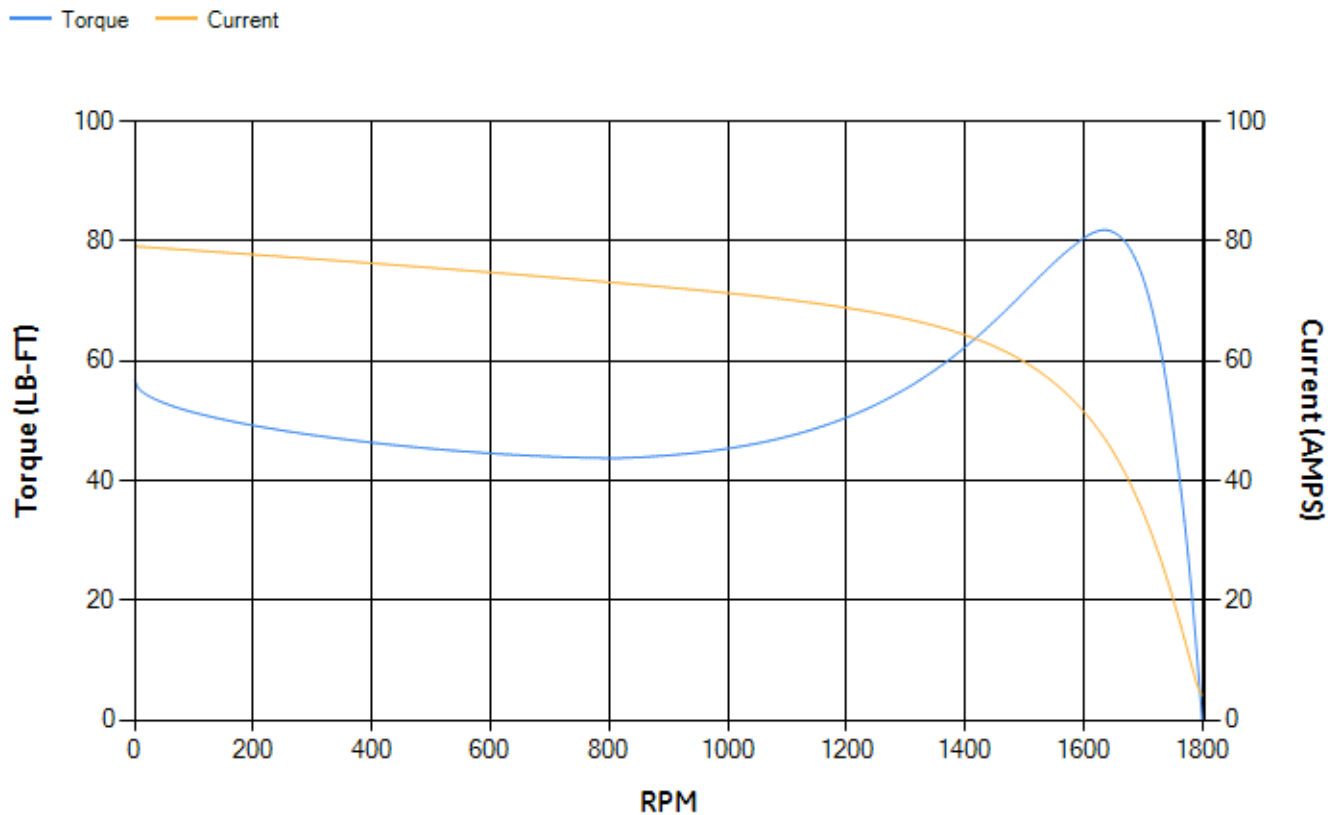
Short Circuit A-C: 0.02

X/R Ratio: 4.867

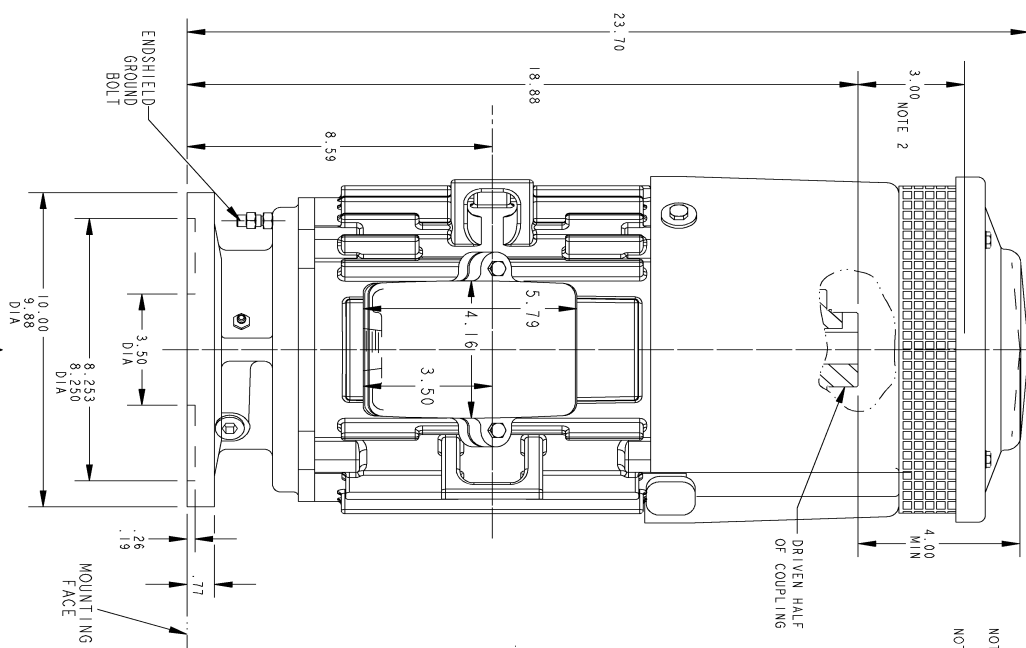
Stator Slots: 36

Rotor Slots: 28

Speed Torque Current Curve (First Connection, First Speed)



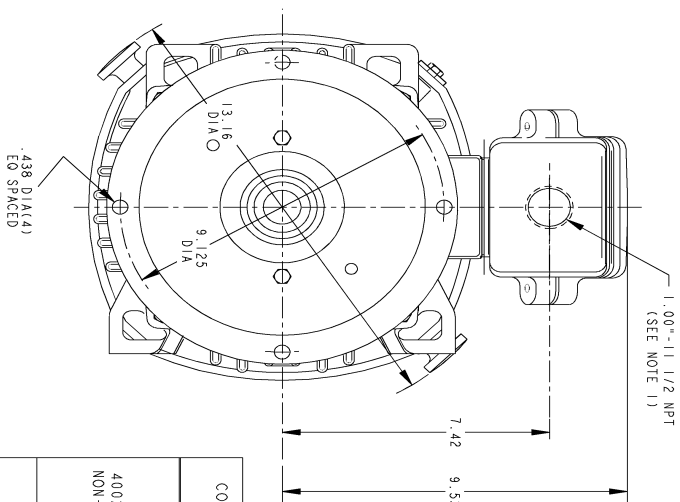
Marks:



NOTE 1: CONDUIT BOX MAY BE ASSEMBLED WITH
ENTRANCE UP OR DOWN OR TO EITHER SIDE

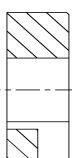
ENTRANCE UP, DOWN OR TO EITHER SIDE.

NOTE 2: THE TOTAL HEIGHT OF PUMP SHAFT & LOCKING NUT ABOVE TOP OF COUPLING MUST NOT EXCEED THIS DIMENSION.

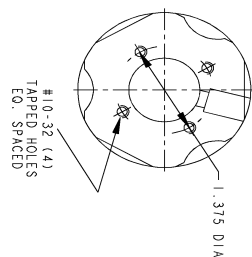


VIEW AT ARROW "A"

| COUPLING KIT | POLES | | BONE DIA. "BX" | KEYWAY | |
|--|-------|---|-------------------|--------|------|
| | 4 | 2 | | "W" | "D" |
| 4002B5521AC NON-REVERSE | 1 | 6 | 1.002 1.001 | .250 | .125 |
| | 2 | 7 | .938 .936 | | |
| | 3 | 8 | .877 .876 | | |
| | 4 | 9 | .752 .751 | | |
| 4002B5521AD BOLTED ON SELF-RELEASE | 1 | 6 | 1.002 1.001 | .250 | .125 |
| | 2 | 7 | .938 .936 | | |
| | 3 | 8 | .877 .876 | | |
| | 4 | 9 | .752 .751 | | |

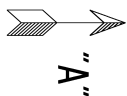


DRIVEN HALF OF COUPLING




| REV. | DESCRIPTION | DATE | APPROVED |
|------|-----------------------|----------|----------|
| I | ISSAC #14-0928 PLYUSH | 11/14/14 | VJAY |

THIRD ANGLE PROJECTION



| SIGNATURES | | DATE |
|------------------------|-------|----------|
| MODEL | MACH1 | 11/13/13 |
| DETAIL | MACH1 | 11/13/13 |
| CHECKED | PACED | 11/13/13 |
| ENRGE | MACH1 | 11/13/13 |
| WG | | |
| QUALITY | | |
| ISSUED | MACH1 | 11/13/13 |
| SOLD MODEL: MODEL NAME | | |



GE Motors

GENERAL ELECTRIC COMPANY

INDUCTION MOTOR OUTLINE

HOLLOW SHAFT-HIGH THRUST (BD-10), EXT ON DE SIDE

FME: FR20 TFC: "P" BASE VERTICAL

SIZE DRAWING

B

4002B5821PMP5323

REV

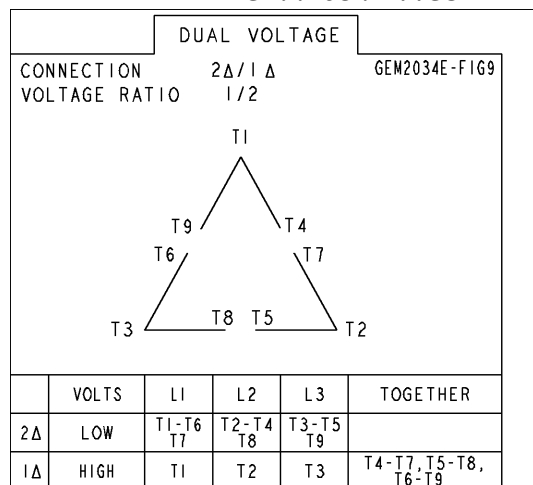
1

SCALE: DRAWING SCALE

SHEET 1 of 1

Marks:

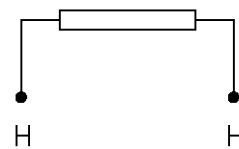
Connection Diagram GEM2034E-FIG9



Heater Connection

3027JE-1

FIG. 1
HEATER CONN.



| | | |
|--------------|----|----|
| CONTROL | L1 | L2 |
| VOLTAGE ONLY | H | H |

