

Product Information Packet

November 9, 2016

Data shown is for the current revision model #. Ensure your nameplate model # matches.

Model Number:	5KS184STE222A
Catalog Number:	M7742
Instruction Manual:	GEI-M1031
Connection Diagram:	GEM2034E-FIG203
Outline Drawing:	358B6276AB

Accessory Connection Diagrams			
Bearing Thermocouple:	None	Heater:	None
RTD:	None	Thermistor:	None
Thermostat:	None	Winding Thermocouple:	None
Bearing RTD:	None		

Table of Contents	
Specification	01
Performance Characteristics	02
Outline Drawing	03
Connection Drawing(s)	04

Marks:

MODEL NUMBER:	5KS184STE222A	Estimated Weight:	118 Lbs
Outline Drawing:	358B6276AB	Time Rating:	CONT
Connection Diagram:	GEM2034E-FIG203	Enclosure:	TEFC
Instruction Book:	GEI-M1031	Encl Construction:	SD
Design Code:	18AD1021A	Ambient Max(°C):	40
Type:	KS	Alt Ambient Max(°C):	--
Frame:	184TC	Insulation Class:	F
Phases:	3	NEMA Design:	A
Poles:	4	Nominal Efficiency:	89.5 %
Output Power:	5HP 3.7KW	Guaranteed Efficiency:	87.5
RPM:	1750	3/4 Load Efficiency:	91.3
Voltage:	230/460	KVA Code:	K
Hertz:	60	Max KVAR:	1.8
Amps - FL:	12.6/6.3	Power Factor:	83
Service Factor:	1.15	Bearing - DE:	6207ZZC3
Alt Service Factor:	--	Bearing - ODE:	6206ZZC3

Enclosure is Totally Enclosed Fan-Cooled

Stamped Nameplate Notes:

USABLE AT 200V @ 5 HP,14.1 AMPS @ 1.0 SF

LRA: 110.8/55.4

50HZ DATA: 3 HP,200/400V, 10.4/5.2 AMPS @ 1.15 SF

50HZ DATA: 5 HP, 200/400V,14.4/7.2 AMPS @ 1.00 SF

GREASE TYPE: SHELL ALVANIA R3 LITHIUM GREASE

Additional Information:

CONDUIT BOX MATERIAL: CAST IRON

SUITABLE FOR USE IN CLASS I DIVISION 2 LOCATIONS

CLASS I DIVISION 2 GROUPS A,B,C,D T3C

CLASS I ZONE 2 IIC T3C



Performance Characteristics

1st Winding 1st Connection

Design: 18AD1021A

Marks:

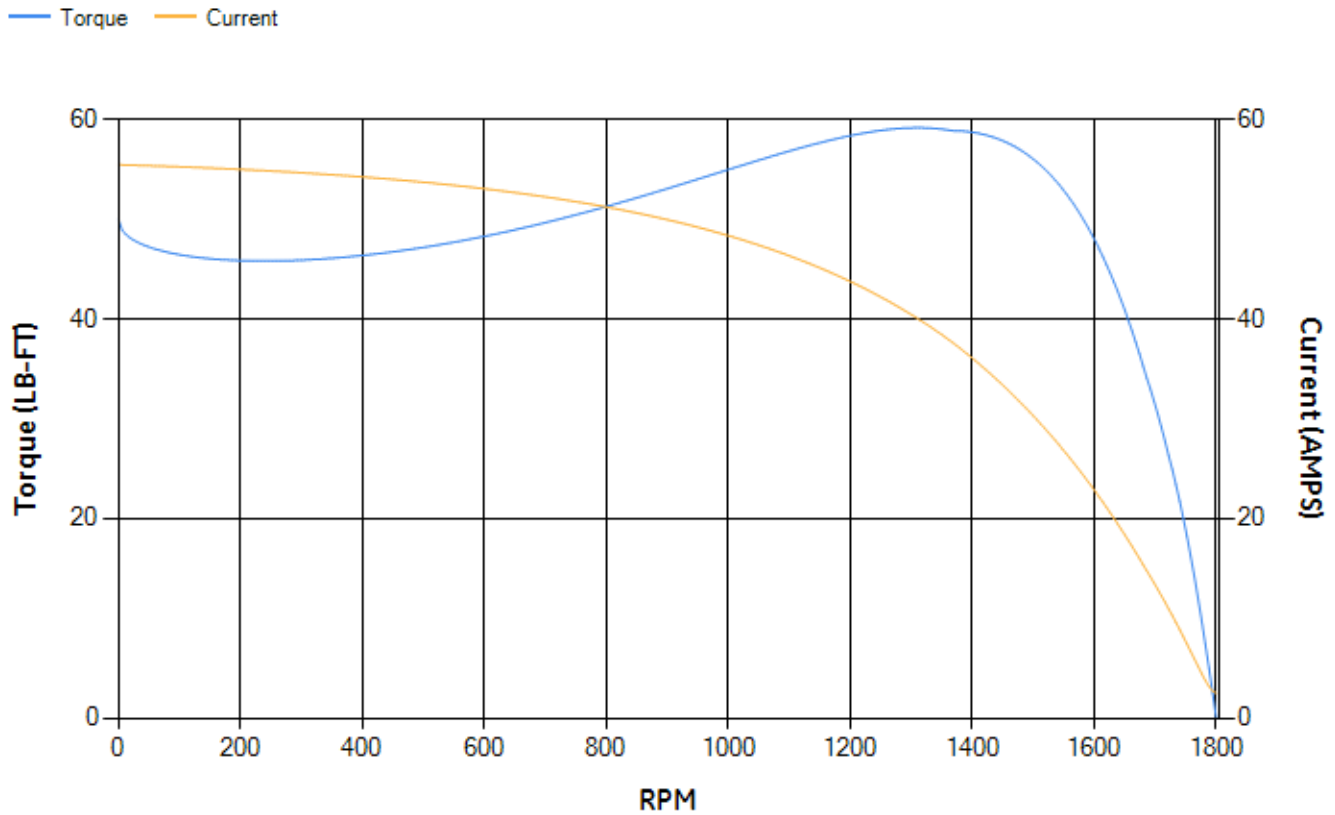
LOAD %	125.0	115.0	100.0	75.0	50.0	25.0	0.0
% EFF	89.12	89.72	90.68	91.29	91.07	87.44	0.00
% PF	85.04	84.48	83.08	78.45	68.27	46.11	5.6
AMPS	7.72	7.1	6.21	4.9	3.76	2.9	2.5

TORQ(FL)#FT	14.98	TORQ(LR)%FL	333.44	TORQ(BD)%FL	385.89
AMPS(LR)	55.45	PF AT START	0.5		

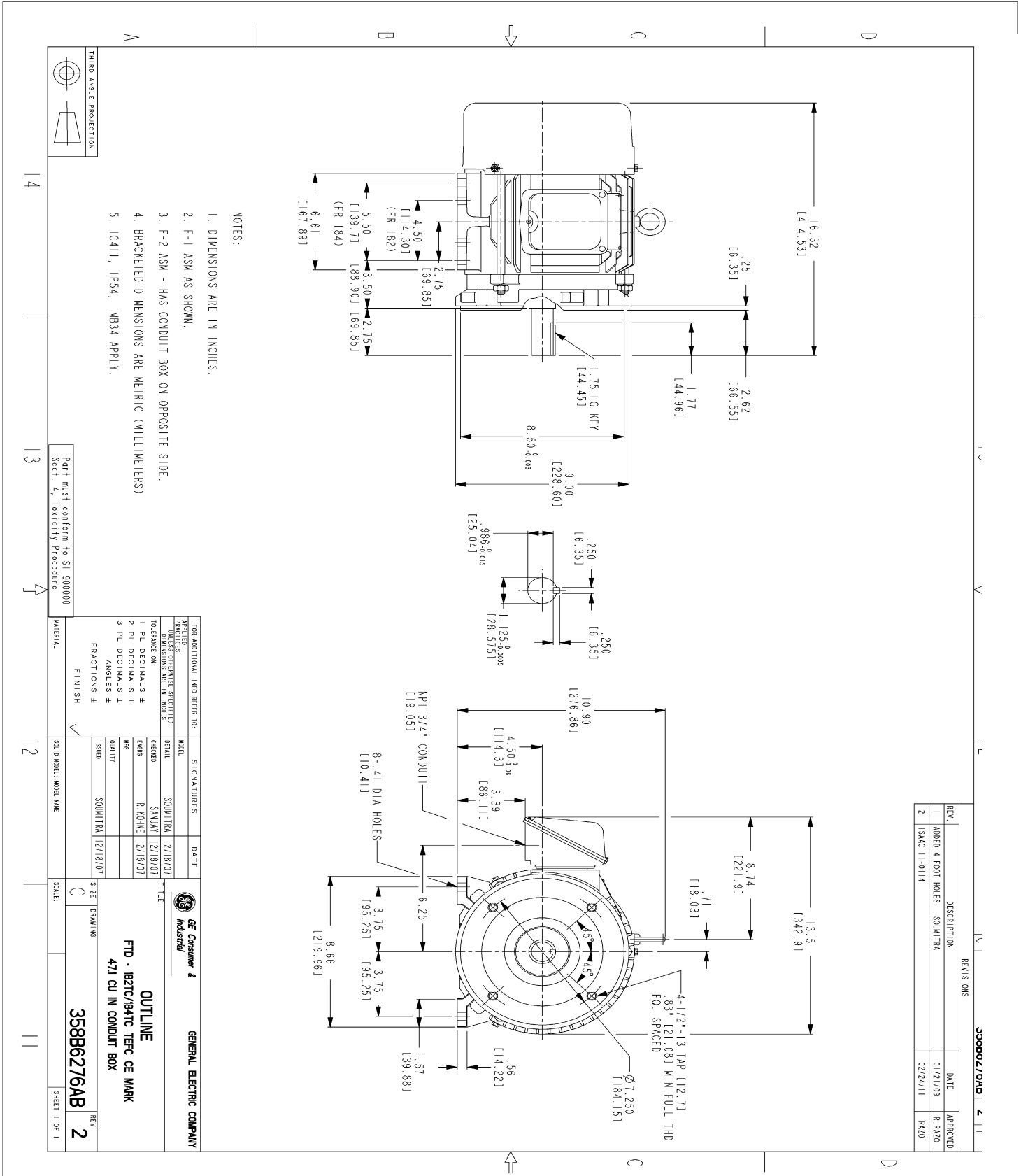
This motor is capable of two cold or one hot start with a maximum connected load inertia of 131 Lb-Ft Sq (5.52 Kg-meter Sq) at 100% voltage, where the load torque varies with the square of the speed. Acceleration time with maximum inertia and the above load type is 17 seconds. Safe stall time at 100% voltage is 40 seconds cold, 27 seconds hot. Rotor inertia is 0.46 Lb-Ft Sq (0.02 Kg-meter Sq).

Open Circuit A-C:	0.239	Short Circuit D-C:	0.007
Short Circuit A-C:	0.009	X/R Ratio:	2.676
Stator Slots:	36	Rotor Slots:	28

Speed Torque Current Curve (First Connection, First Speed)

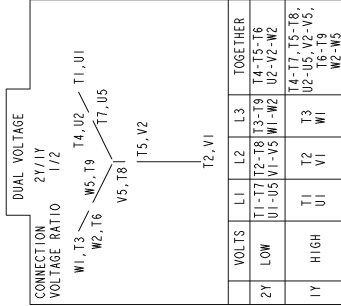


Marks:



Marks:

Connection Diagram
GEM2034E-FIG203



NAME: 500903578 OBJECT: GEM2034E-FIG203 DATE: 03-Nov-06 13:53:10