

Product Information Packet

November 9, 2016

Data shown is for the current revision model #. Ensure your nameplate model # matches.

Model Number:	5KS449LAA317B
Catalog Number:	M7674
Instruction Manual:	GEI-56128
Connection Diagram:	GEM2034E-FIG8
Outline Drawing:	239CC800AA

Accessory Connection Diagrams			
Bearing Thermocouple:	None	Heater:	None
RTD:	None	Thermistor:	None
Thermostat:	None	Winding Thermocouple:	None
Bearing RTD:	None		

Table of Contents	
Specification	01
Performance Characteristics	02
Outline Drawing	03
Connection Drawing(s)	04



Marks:

MODEL NUMBER:	5KS449LAA317B	Estimated Weight:	2940 Lbs
Outline Drawing:	239CC800AA	Time Rating:	CONT
Connection Diagram:	GEM2034E-FIG8	Enclosure:	TEFC
Instruction Book:	GEI-56128	Encl Construction:	SD
Design Code:	49BD3090B	Ambient Max(°C):	40
Type:	KS	Alt Ambient Max(°C):	--
Frame:	449T	Insulation Class:	F
Phases:	3	NEMA Design:	A
Poles:	6	Nominal Efficiency:	95.8 %
Output Power:	250HP 185KW	Guaranteed Efficiency:	95.0
RPM:	1190	3/4 Load Efficiency:	96.1
Voltage:	575	KVA Code:	J
Hertz:	60	Max KVAR:	89.8
Amps - FL:	238.0	Power Factor:	82.0
Service Factor:	1.15	Bearing - DE:	6318ZC3S0
Alt Service Factor:	--	Bearing - ODE:	6318ZC3S0

Enclosure is Totally Enclosed Fan-Cooled

Stamped Nameplate Notes:

FOR DIRECT COUPLED LOAD ONLY
 INVERTER DUTY PER NEMA MG1 PART 31
 ALTERNATE RATING FOR PWM CONTROL:1.0SF 40C AMBIENT
 VAR TORQUE RANGE 0-60 HZ

Additional Information:

6P - T EXTN - SPLIT LEAD
 700 CU IN - 3.00" NPT
 OIL RESISTANT SLEEVING ON LEADS
 F1 MOUNTING
 VIBRATION LIMIT 0.15 INCH PER SEC

Performance Characteristics

1st Winding 1st Connection

Design: 49BD3090B

Marks:

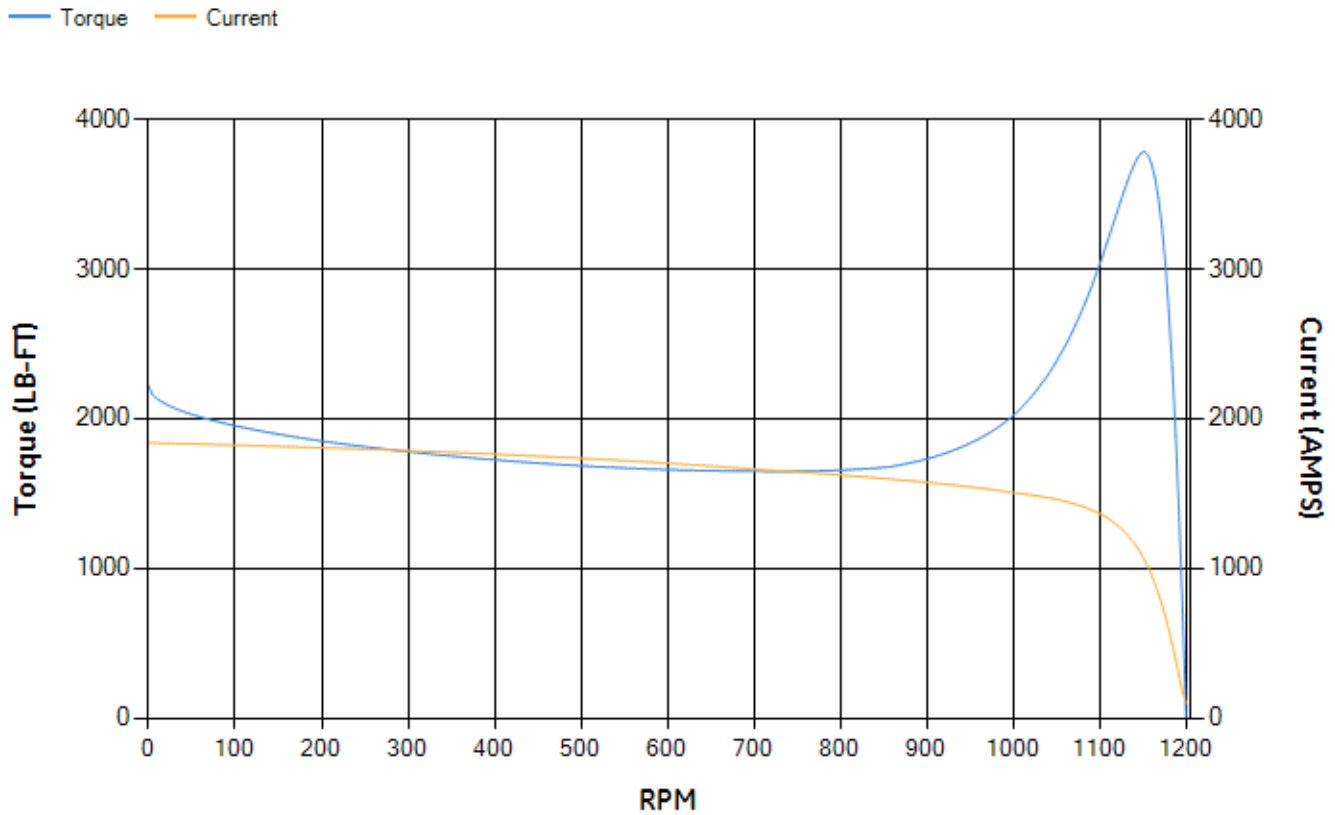
LOAD %	125.0	115.0	100.0	75.0	50.0	25.0	0.0
% EFF	95.42	95.62	96.08	96.12	95.91	94.04	0.00
% PF	84.63	83.91	82.28	77.24	66.48	43.49	2.45
AMPS	289.77	268.29	236.78	189.09	146.77	114.44	99.87

TORQ(FL)#FT	1100.77	TORQ(LR)%FL	201.37	TORQ(BD)%FL	343.3
AMPS(LR)	1838.7	PF AT START	0.29		

This motor is capable of two cold or one hot start with a maximum connected load inertia of 9890 Lb-Ft Sq (416.37 Kg-meter Sq)at 100% voltage, where the load torque varies with the square of the speed. Acceleration time with maximum inertia and the above load type is 25 seconds. Safe stall time at 100% voltage is 81 seconds cold, 39 seconds hot. Rotor inertia is 177.16 Lb-Ft Sq (7.46 Kg-meter Sq).

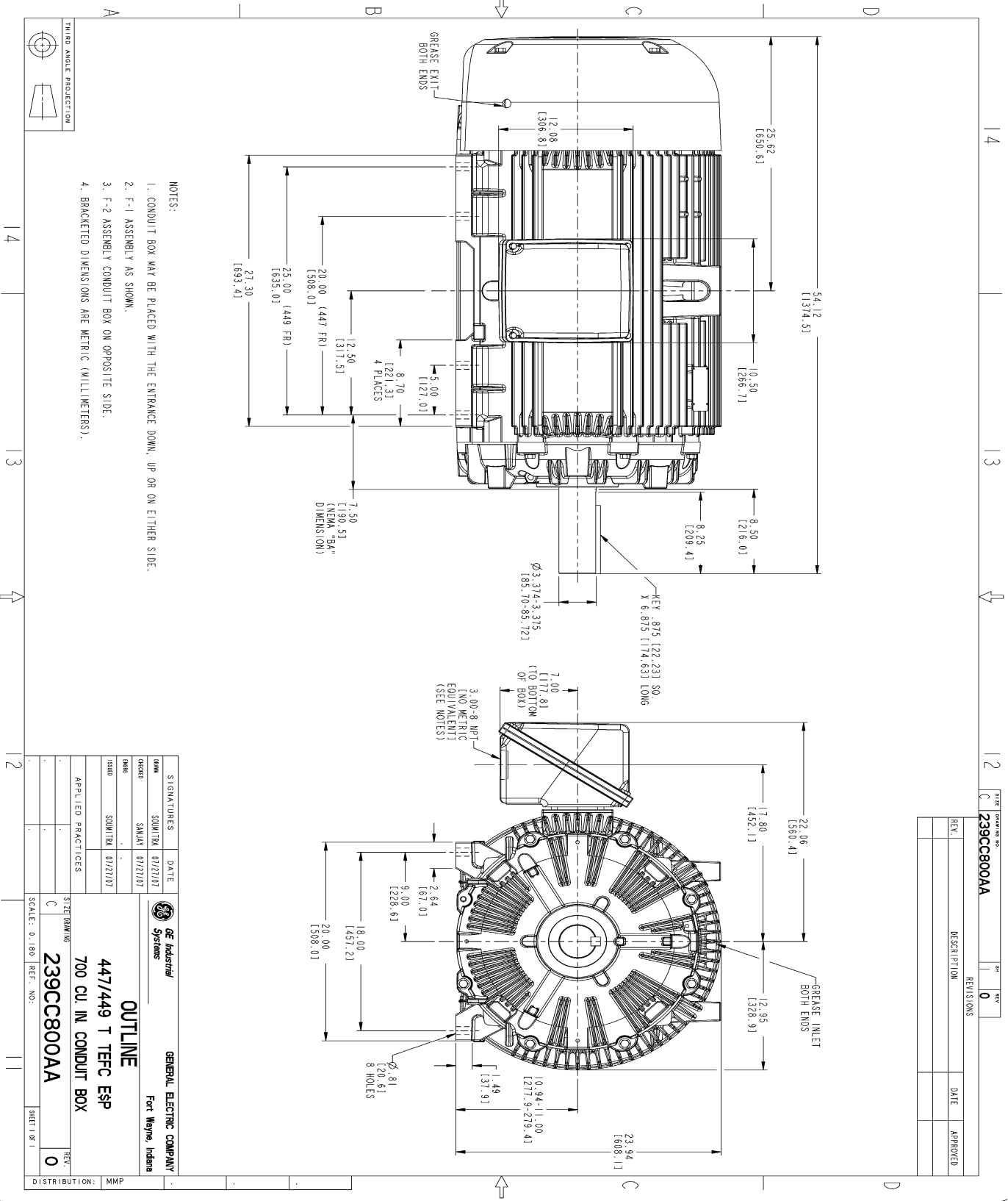
Open Circuit A-C:	0.927	Short Circuit D-C:	0.024
Short Circuit A-C:	0.046	X/R Ratio:	9.017
Stator Slots:	72	Rotor Slots:	58

Speed Torque Current Curve (First Connection, First Speed)

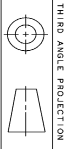


NAME:501352727 OBJECT:239CC800AA DATE:31-Jul-07 14:14:01

Marks:



- NOTES:
1. CONDUIT BOX MAY BE PLACED WITH THE ENTRANCE DOWN, UP OR ON EITHER SIDE.
 2. F-1 ASSEMBLY AS SHOWN.
 3. F-2 ASSEMBLY CONDUIT BOX ON OPPOSITE SIDE.
 4. BRACKETED DIMENSIONS ARE METRIC (MILLIMETERS).



REV.	DESCRIPTION	DATE	APPROVED

SIGNATURES	DATE	GENERAL ELECTRIC COMPANY
DESIGNED BY: SAJAN 01/27/07	01/27/07	Fort Wayne, Indiana
DRAWN BY: SAJAN 01/27/07	01/27/07	
APPLIED PRACTICES		OUTLINE 447/449 T TEFC ESP 700 CU. IN. CONDUIT BOX 239CC800AA
SCALE: 0.180 REF. NO.:		
SHEET NO. 1		DISTRIBUTION: MMP

Marks:

Connection Diagram
GEM2034E-FIG8

