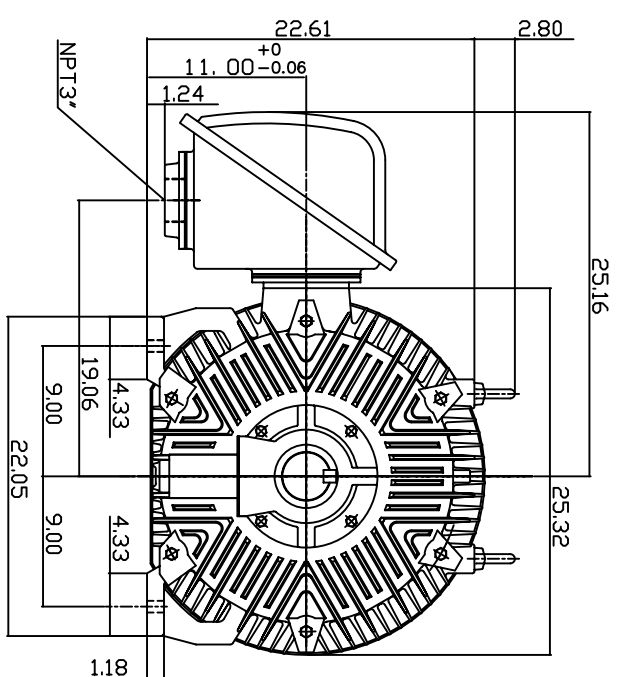
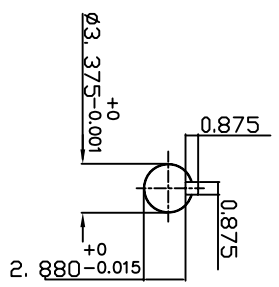
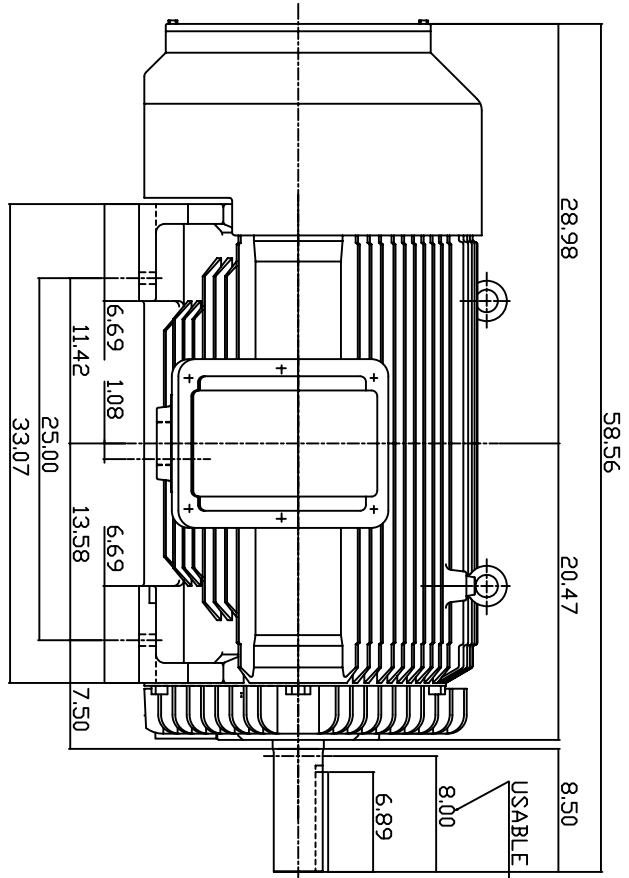


| TYPE | OUTPUT | | POLE | TIME RATING | VOLTAGE | Hz | SYN SPEED R.P.M |
|--------|--------|-----|------|-------------|---------|----|-----------------|
| | HP | KW | | | | | |
| AEHH8N | 350 | 261 | 4 | CONT. | 460 | 60 | 1800 |

TOTALLY ENCLOSED FAN-COOLED TYPE, SQUIRREL-CAGE ROTOR



NOTE:

1. DIMENSIONS IN INCH.
2. FRAME NO.: 449T
3. F CLASS INSULATION, S.F.1.15
4. FOR BELT DRIVE
5. BEARING SIZE: DRIVE END: NU320
NON-DRIVE END: 6316
6. MOTOR APPROX. WEIGHT: 3350 LBS

TW-56C

| | | |
|-------|---------|-------------|
| DWN. | W/CHENG | MAY-10-2004 |
| CHKD. | H/HUANG | MAY-10-2004 |
| APPD. | C/WANG | MAY-10-2004 |

| | | |
|-------------------------|--------------|--------------------|
| DATE | MAY 10, 2004 | OUTLINE DIMENSIONS |
| CATALOG NO. | EP3504R | |
| 3-PHASE INDUCTION MOTOR | | DWG NO. 3A040W799 |
| REV: 00 | | |



6 5 4 3 2 1