

# Product Information Packet

January 12, 2017

Data shown is for the current revision model #. Ensure your nameplate model # matches.

<b>Model Number:</b>	<b>5KS182CAA105D</b>
<b>Catalog Number:</b>	<b>E9605</b>
<b>Instruction Manual:</b>	GEI-56128
<b>Connection Diagram:</b>	GEM2034E-FIG3
<b>Outline Drawing:</b>	4002B5818RAP5201

Accessory Connection Diagrams			
<b>Bearing Thermocouple:</b>	None	<b>Heater:</b>	None
<b>RTD:</b>	None	<b>Thermistor:</b>	None
<b>Thermostat:</b>	3027JE-2A	<b>Winding Thermocouple:</b>	None
<b>Bearing RTD:</b>	None		

## Table of Contents

Specification	01
Performance Characteristics	02
Outline Drawing	03
Connection Drawing(s)	04
Spare parts	05



**Marks:**

<b>MODEL NUMBER:</b>	<b>5KS182CAA105D</b>	<b>Estimated Weight:</b>	76 Lbs
<b>Outline Drawing:</b>	4002B5818RAP5201	<b>Time Rating:</b>	CONT
<b>Connection Diagram:</b>	GEM2034E-FIG3	<b>Enclosure:</b>	TEFC
<b>Instruction Book:</b>	GEI-56128	<b>Encl Construction:</b>	XP
<b>Design Code:</b>	18BD0104A	<b>Ambient Max(°C):</b>	40
<b>Type:</b>	KS	<b>Alt Ambient Max(°C):</b>	--
<b>Frame:</b>	182T	<b>Insulation Class:</b>	F
<b>Phases:</b>	3	<b>NEMA Design:</b>	B
<b>Poles:</b>	2	<b>Nominal Efficiency:</b>	86.5 %
<b>Output Power:</b>	3HP 2.2KW	<b>Guaranteed Efficiency:</b>	84.0
<b>RPM:</b>	3530	<b>3/4 Load Efficiency:</b>	87.1
<b>Voltage:</b>	230/460	<b>KVA Code:</b>	K
<b>Hertz:</b>	60	<b>Max KVAR:</b>	1.1
<b>Amps - FL:</b>	8.0/4.0	<b>Power Factor:</b>	82.0
<b>Service Factor:</b>	1.00	<b>Bearing - DE:</b>	6206ZC3
<b>Alt Service Factor:</b>	--	<b>Bearing - ODE:</b>	6206ZC3

**Enclosure is Totally Enclosed Fan-Cooled**

---

**Stamped Nameplate Notes:**

EXPLOSION PROOF MOTOR  
TEMP CODE T3C  
THERMOSTAT LEADS TB1-TB2  
STAMP NP249A5571AC "CL I (C & D) CL II (F & G)"

**Additional Information:**

2P - T EXTN  
STANDARD FLOOR MOUNT  
C/BOX 26 CU IN-0.75 NPT  
F1 CONDUIT BOX MOUNTING  
AUX LEADS EXIT WITH MOTOR LEADS  
CL I C & D CL II F & G EXPLOSION PROOF MOTOR

**Performance Characteristics**

1st Winding 1st Connection

**Design: 18BD0104A**

**Marks:**

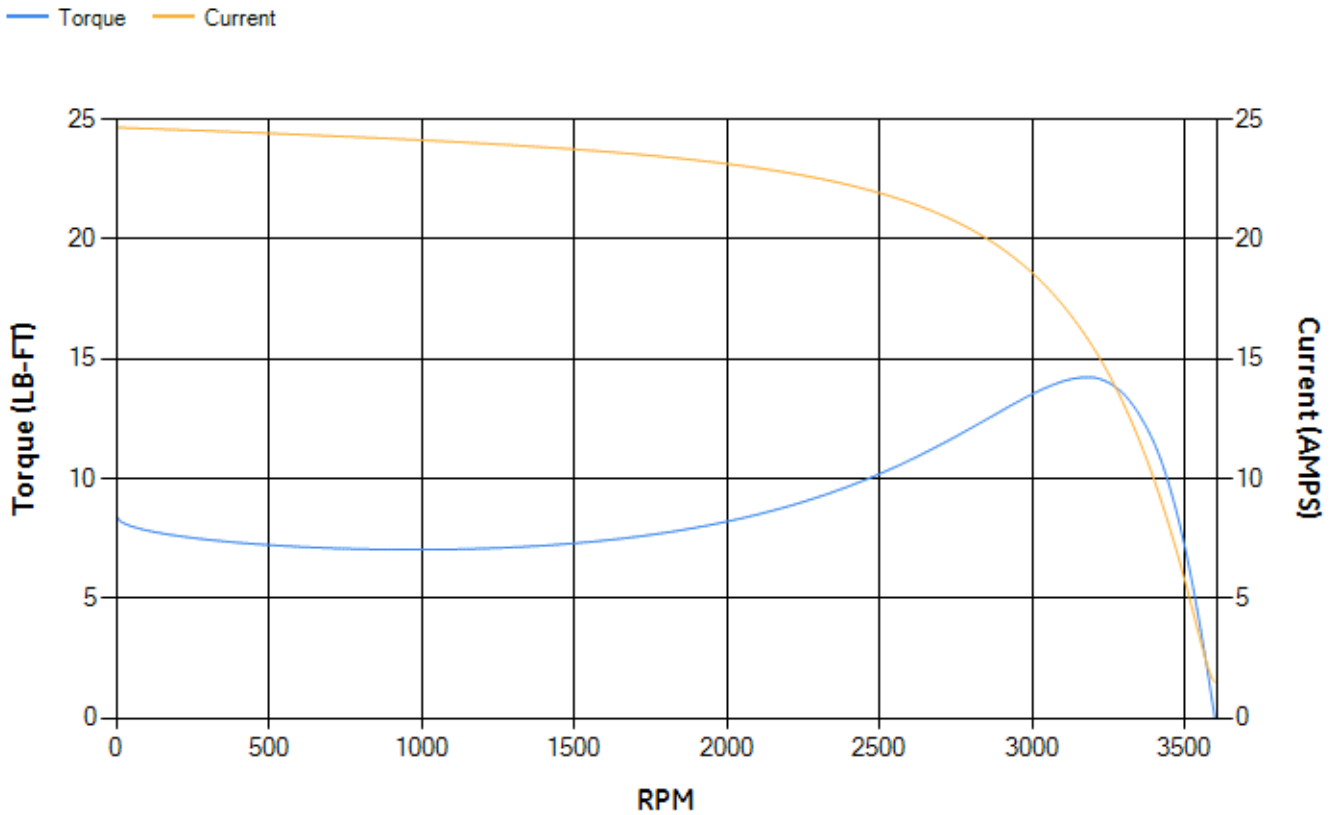
LOAD %	125.0	115.0	100.0	75.0	50.0	25.0	0.0
% EFF	87.06	87.32	87.71	87.09	84.83	76.66	0.00
% PF	84.31	83.54	85.35	76.76	66.53	46.21	13.09
AMPS	4.78	4.43	3.75	3.15	2.49	1.98	1.49

<b>TORQ(FL)#FT</b>	4.46	<b>TORQ(LR)%FL</b>	188.9	<b>TORQ(BD)%FL</b>	316.66
<b>AMPS(LR)</b>	24.66	<b>PF AT START</b>	0.4		

This motor is capable of two cold or one hot start with a maximum connected load inertia of 38 Lb-Ft Sq (1.6 Kg-meter Sq) at 100% voltage, where the load torque varies with the square of the speed. Acceleration time with maximum inertia and the above load type is 60 seconds. Safe stall time at 100% voltage is 116 seconds cold, 97 seconds hot. Rotor inertia is 0.12 Lb-Ft Sq (0.01 Kg-meter Sq).

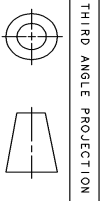
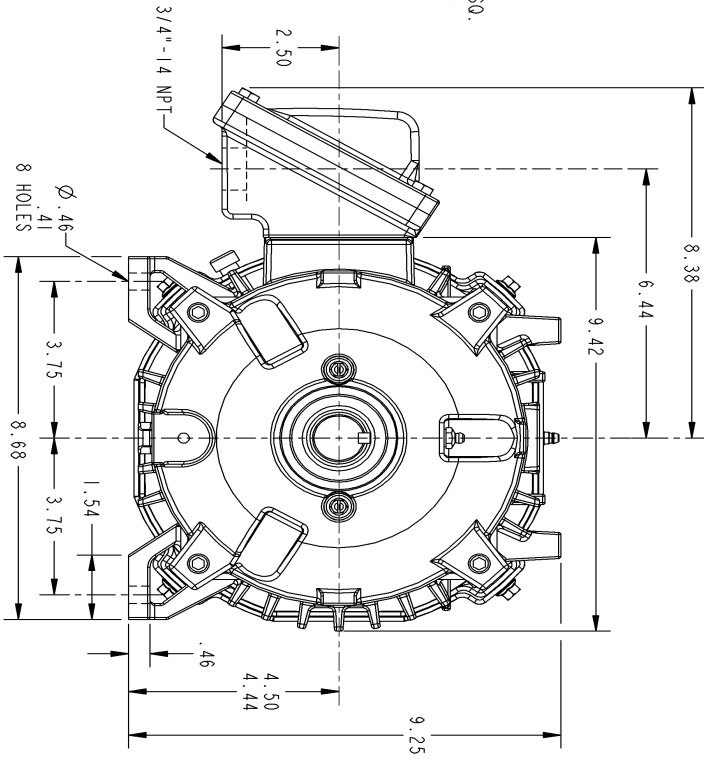
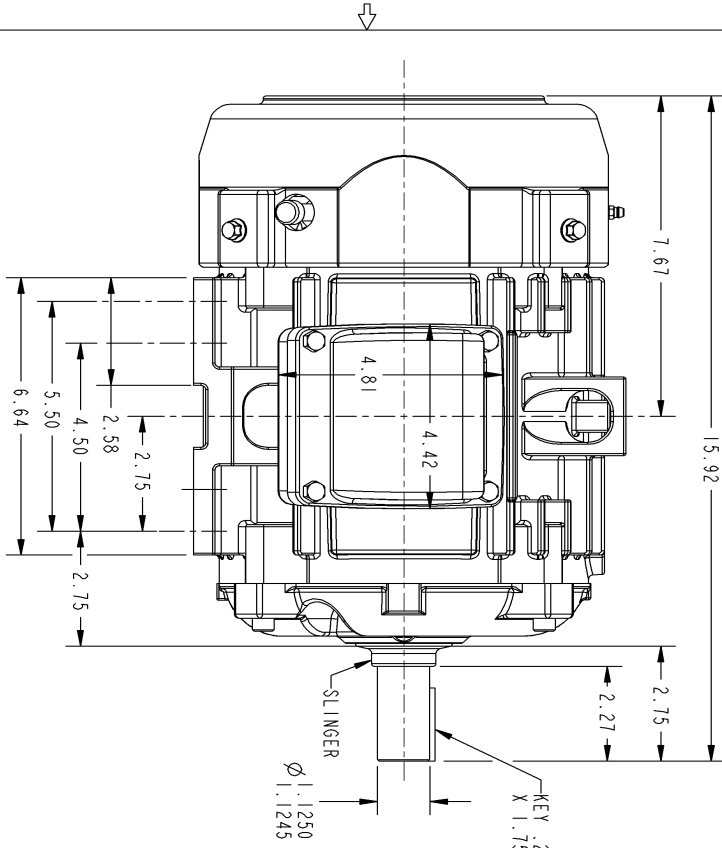
<b>Open Circuit A-C:</b>	0.329	<b>Short Circuit D-C:</b>	0.01
<b>Short Circuit A-C:</b>	0.018	<b>X/R Ratio:</b>	3.956
<b>Stator Slots:</b>	36	<b>Rotor Slots:</b>	28

**Speed Torque Current Curve (First Connection, First Speed)**



Marks:

NOTE 1: CONDUIT BOX MAY BE ASSEMBLED WITH ENTRANCE UP, DOWN OR TO EITHER SIDE.  
 NOTE 2: F1 ASSEMBLY AS SHOWN. F2 ASSEMBLY CONDUIT BOX ON OPPOSITE SIDE FROM SHOWN LOCATION.



SIZE 0  
 4002B5818RAP5201

REV.	DESCRIPTION	DATE	APPROVED

SIGNATURES	DATE	REV.
DRWN: GARY WARRNER	APR 24/02	0
CHEK: GARY WARRNER	MAY 01/02	
ISSD: GARY WARRNER	MAY 02/02	

APPLIED PRACTICES

GE Industrial Systems  
 GENERAL ELECTRIC COMPANY  
 Fort Wayne, Indiana

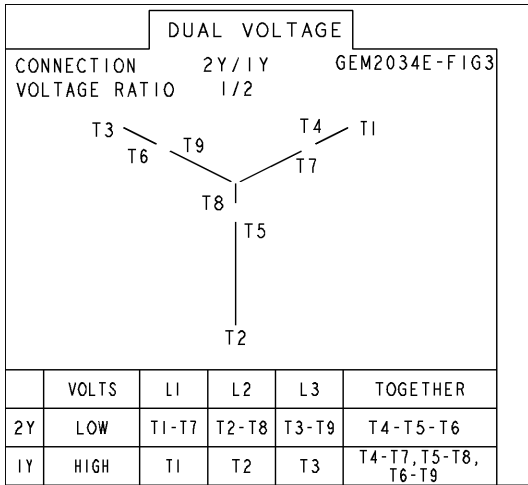
INDUCTION MOTOR OUTLINE  
 STANDARD CONSTRUCTION  
 FME: FR180T FCXP XSD ULTRA

SIZE DRAWING: 4002B5818RAP5201  
 SCALE: 0.400 REF. NO.: 4002B5818RAP201 SHEET 1 OF 1

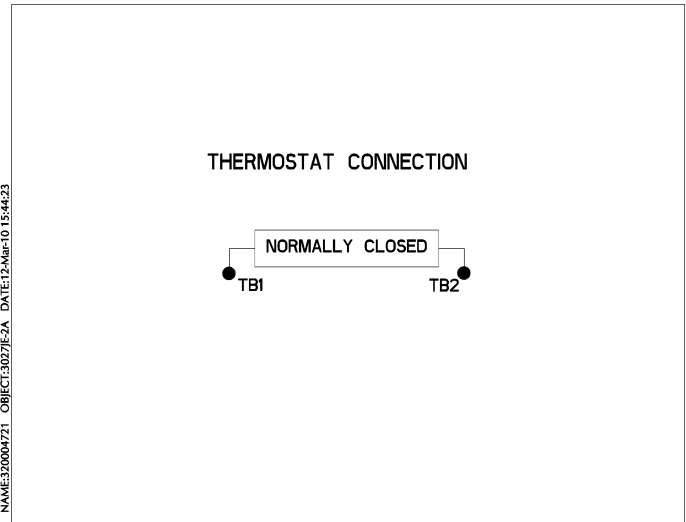
DISTRIBUTION: PMP-18K15

Marks:

**Connection Diagram**  
**GEM2034E-FIG3**



**Thermostat Connection**  
**3027JE-2A**



End shield Assembly		
Part Description	DE Side Part#	ODE Side Part#
End Shield	4004D5271PA1	4004D5271SA1
Bearing	235A2502AM01	235A2502AM01
Slinger/Inproseal	235A2300BL1	

Fan & Fan Cover Assembly	
Part Description	Part#
Fan	346L620AP-G01
Fan Cover	4003C5786PA1

Conduit & Accessories Box Assembly	
Part Description	Part#
Conduit Box	4002B5718RA-G01

Mechanical Accessories	
Part Description	Part#
Brake	
Tachometer	