

Product Information Packet

January 12, 2017

Data shown is for the current revision model #. Ensure your nameplate model # matches.

Model Number:	5KS513SAA145A
Catalog Number:	Q544
Instruction Manual:	GEI-56128
Connection Diagram:	GEM2034E-FIG20
Outline Drawing:	239C6C00HD

Accessory Connection Diagrams			
Bearing Thermocouple:	None	Heater:	3027JE-1C
RTD:	None	Thermistor:	None
Thermostat:	None	Winding Thermocouple:	None
Bearing RTD:	None		

Table of Contents	
Specification	01
Performance Characteristics	02
Outline Drawing	03
Connection Drawing(s)	04



Marks:

MODEL NUMBER:	5KS513SAA145A	Estimated Weight:	6917 Lbs
Outline Drawing:	239C6C00HD	Time Rating:	CONT
Connection Diagram:	GEM2034E-FIG20	Enclosure:	TEFC
Instruction Book:	GEI-56128	Encl Construction:	SD
Design Code:	50BD0087A	Ambient Max(°C):	40
Type:	KS	Alt Ambient Max(°C):	--
Frame:	5013ST	Insulation Class:	F
Phases:	3	NEMA Design:	--
Poles:	2	Nominal Efficiency:	96.2 %
Output Power:	600HP 444KW	Guaranteed Efficiency:	95.4
RPM:	3565	3/4 Load Efficiency:	96.3
Voltage:	460	KVA Code:	F
Hertz:	60	Max KVAR:	52.2
Amps - FL:	614.0	Power Factor:	95.0
Service Factor:	1.15	Bearing - DE:	6315ZC3
Alt Service Factor:	--	Bearing - ODE:	6315ZC3

Enclosure is Totally Enclosed Fan-Cooled

Stamped Nameplate Notes:

HTR LDS HE1-HE2 115V 350W
 ROT CW FACING ODE LEAD/PH SEQUENCE 1-2-3/1-2-3
 INVERTER DUTY PER NEMA MG1 PART 31
 ALTERNATE RATING FOR PWM CONTROL:1.0SF 40C AMBIENT
 VAR TORQUE RANGE 0-60 HZ
 FOR DIRECT COUPLED LOAD ONLY

Additional Information:

2P - ST EXTN - SPLIT LEAD
 5700 CU IN - 3(3.00" NPT)
 C/B GRD PLATE
 115V HTR LDS TO AUX BOX OPP MAIN CONDUIT BOX
 SPACE HEATER CAUTION NAMEPLATE
 NEMA TYPE GRD PAD
 F1 MOUNTING
 PROVISION FOR BTD ON BOTH ENDS PLUGGED

Performance Characteristics

1st Winding 1st Connection

Design: 50BD0087A

Marks:

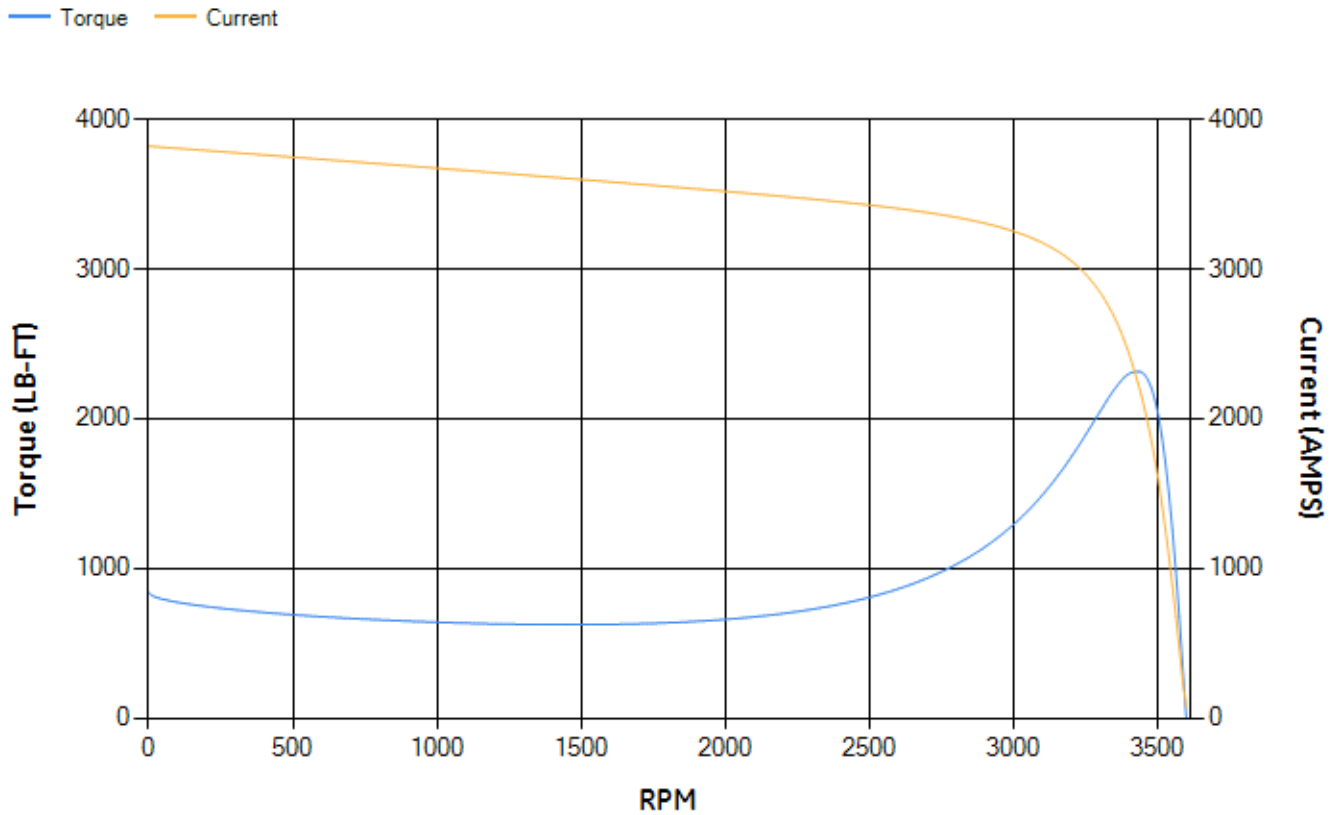
LOAD %	125.0	115.0	100.0	75.0	50.0	25.0	0.0
% EFF	95.36	95.62	96.15	96.34	96.34	94.96	0.00
% PF	93.91	94.31	94.76	94.98	93.92	87.09	8.1
AMPS	783.83	716.12	615.44	460.27	310.34	169.76	72.84

TORQ(FL)#FT	883.71	TORQ(LR)%FL	94.95	TORQ(BD)%FL	261.63
AMPS(LR)	3820.56	PF AT START	0.16		

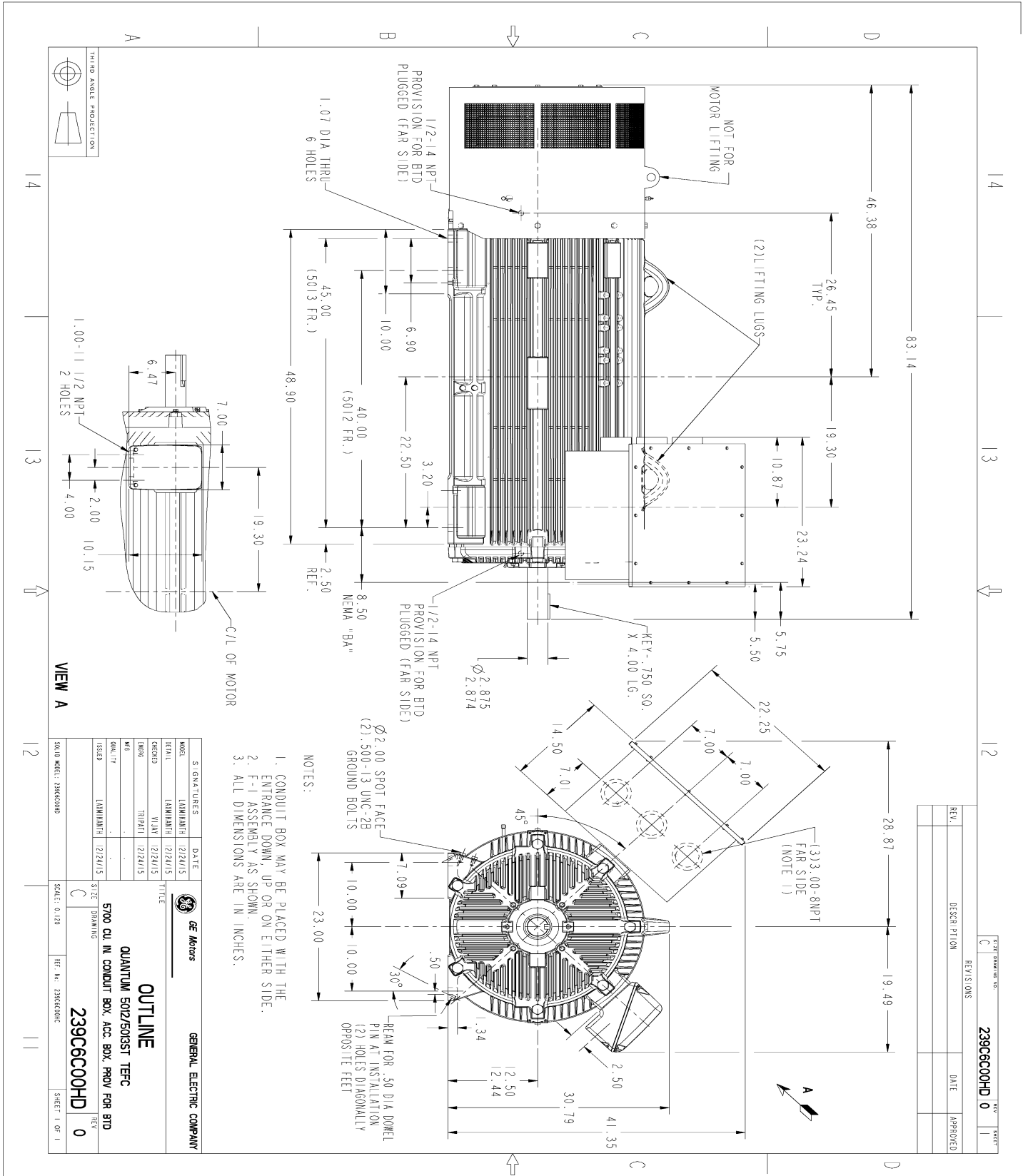
This motor is capable of two cold or one hot start with a maximum connected load inertia of 1268 Lb-Ft Sq (53.38 Kg-meter Sq)at 100% voltage, where the load torque varies with the square of the speed. Acceleration time with maximum inertia and the above load type is 27 seconds. Safe stall time at 100% voltage is 59 seconds cold, 33 seconds hot. Rotor inertia is 158.26 Lb-Ft Sq (6.66 Kg-meter Sq).

Open Circuit A-C:	2.344	Short Circuit D-C:	0.044
Short Circuit A-C:	0.047	X/R Ratio:	16.529
Stator Slots:	48	Rotor Slots:	40

Speed Torque Current Curve (First Connection, First Speed)



Marks:



REV.	DESCRIPTION	DATE	APPROVED

- NOTES:
1. CONDUIT BOX MAY BE PLACED WITH THE ENTRANCE DOWN, UP OR ON EITHER SIDE.
 2. F-1 ASSEMBLY AS SHOWN.
 3. ALL DIMENSIONS ARE IN INCHES.

GENERAL ELECTRIC COMPANY

OUTLINE

QUANTUM 502/503ST TFC

5700 CU IN CONDUIT BOX, ACC. BOX, PROV FOR BTD

239C6C00HD

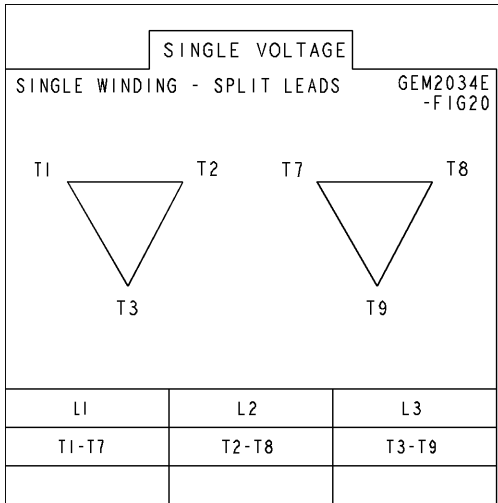
SCALE: 0.125

SHEET 1 OF 1

SIGNATURES	DATE
DESIGNER	12/24/15
CHECKED	12/24/15
DATE	12/24/15
ISSUED	12/24/15

Marks:

Connection Diagram
GEM2034E-FIG20



Heater Connection
3027JE-1C

