

Product Information Packet

November 8, 2016

Data shown is for the current revision model #. Ensure your nameplate model # matches.

Model Number:	5KS447XAA114D
Catalog Number:	M8939
Instruction Manual:	GEI-56128
Connection Diagram:	GEM2034E-FIG7
Outline Drawing:	239C6800VY

Accessory Connection Diagrams			
Bearing Thermocouple:	None	Heater:	None
RTD:	None	Thermistor:	None
Thermostat:	None	Winding Thermocouple:	None
Bearing RTD:	None		

Table of Contents

Specification	01
Performance Characteristics	02
Outline Drawing	03
Connection Drawing(s)	04
Spare parts	05



Marks:

MODEL NUMBER:	5KS447XAA114D	Estimated Weight:	2640 Lbs
Outline Drawing:	239C6800VY	Time Rating:	CONT
Connection Diagram:	GEM2034E-FIG7	Enclosure:	TEFC
Instruction Book:	GEI-56128	Encl Construction:	841
Design Code:	49BD0086B	Ambient Max(°C):	40
Type:	KS	Alt Ambient Max(°C):	--
Frame:	447TS	Insulation Class:	H
Phases:	3	NEMA Design:	B
Poles:	2	Nominal Efficiency:	95.4 %
Output Power:	200HP 148KW	Guaranteed Efficiency:	95.0
RPM:	3575	3/4 Load Efficiency:	95.6
Voltage:	575	KVA Code:	G
Hertz:	60	Max KVAR:	30.7
Amps - FL:	171.0	Power Factor:	92.0
Service Factor:	1.15	Bearing - DE:	6314ZC3
Alt Service Factor:	--	Bearing - ODE:	6314ZC3

Enclosure is Totally Enclosed Fan-Cooled

Stamped Nameplate Notes:

DE BRG 70BC03JP30, ODE BRG 70BC03JP30
 STAMP NP249A5564P051 AS BELOW:
 MODEL:5KS447XAA114D S/N: XXX
 CSA CERTIFIED CSA09.2216219 FOR EX NA IIC 200 C GC
 CL 1 ZONE2 AEX NA IIC 200C;CL 1 DIV2 GRP ABCD 200C
 IN -25C <= AMB <= 40C, 1.0 SF ON SINE-WAVE PWR
 SURF TEMP 260C AT 1.15SF ON SINE-WAVE PWR
 OR 215 C VT OR 230 C CT OR --- C CHP PWM CONTROL
 ALTERNATE RATING FOR PWM CONTROL 1.0SF 40C AMB
 VT 0-60 HZ, CT 30-60 HZ, CHP --- HZ.
 EXCEPTION TO IEEE-STD-841-2009:SOUND POWER 96 DBA

Additional Information:

2P - TS EXTN
 PAINTED FRAME ID & SHAFT,
 FAN COVER INSIDE & ODE E/S OUTSIDE
 700 CU IN - 3.00" NPT WITH DRAIN HOLES
 INPRO SEAL BOTH ENDS
 OIL RESISTANT SLEEVING ON LEADS
 .0015" TIR SHAFT RUNOUT
 ROUTINE TEST REPORT AND 5 POINT VIBRATION TEST
 REPORT INCLUDED IN C/B
 COPPER WASHER UNDER HEADS OF BEARING CAP BOLTS,
 APPLY TITE-SEAL (A50CD427A) ON BEARING CAP SCREWS,
 RABBETS AND PLUG THREADS.
 GROUND PAD
 F1 MOUNTING

Performance Characteristics

1st Winding 1st Connection

Design: 49BD0086B

Marks:

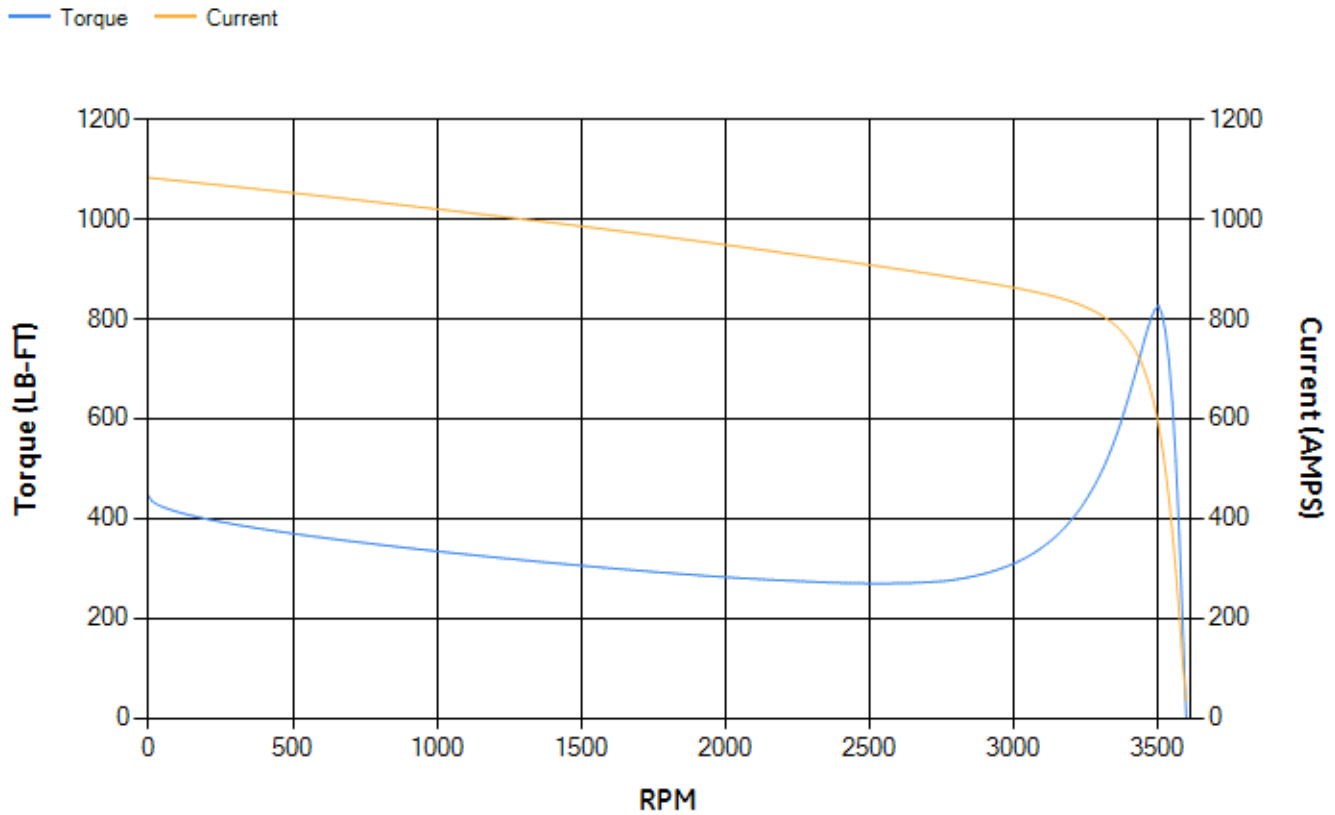
LOAD %	125.0	115.0	100.0	75.0	50.0	25.0	0.0
% EFF	94.94	95.16	95.62	95.63	95.27	92.92	0.00
% PF	91.53	91.77	91.89	91.13	87.68	73.69	7.23
AMPS	215.41	197.2	170.43	128.88	89.63	54.67	34.26

TORQ(FL)#FT	293.51	TORQ(LR)%FL	151.64	TORQ(BD)%FL	281.4
AMPS(LR)	1083.14	PF AT START	0.23		

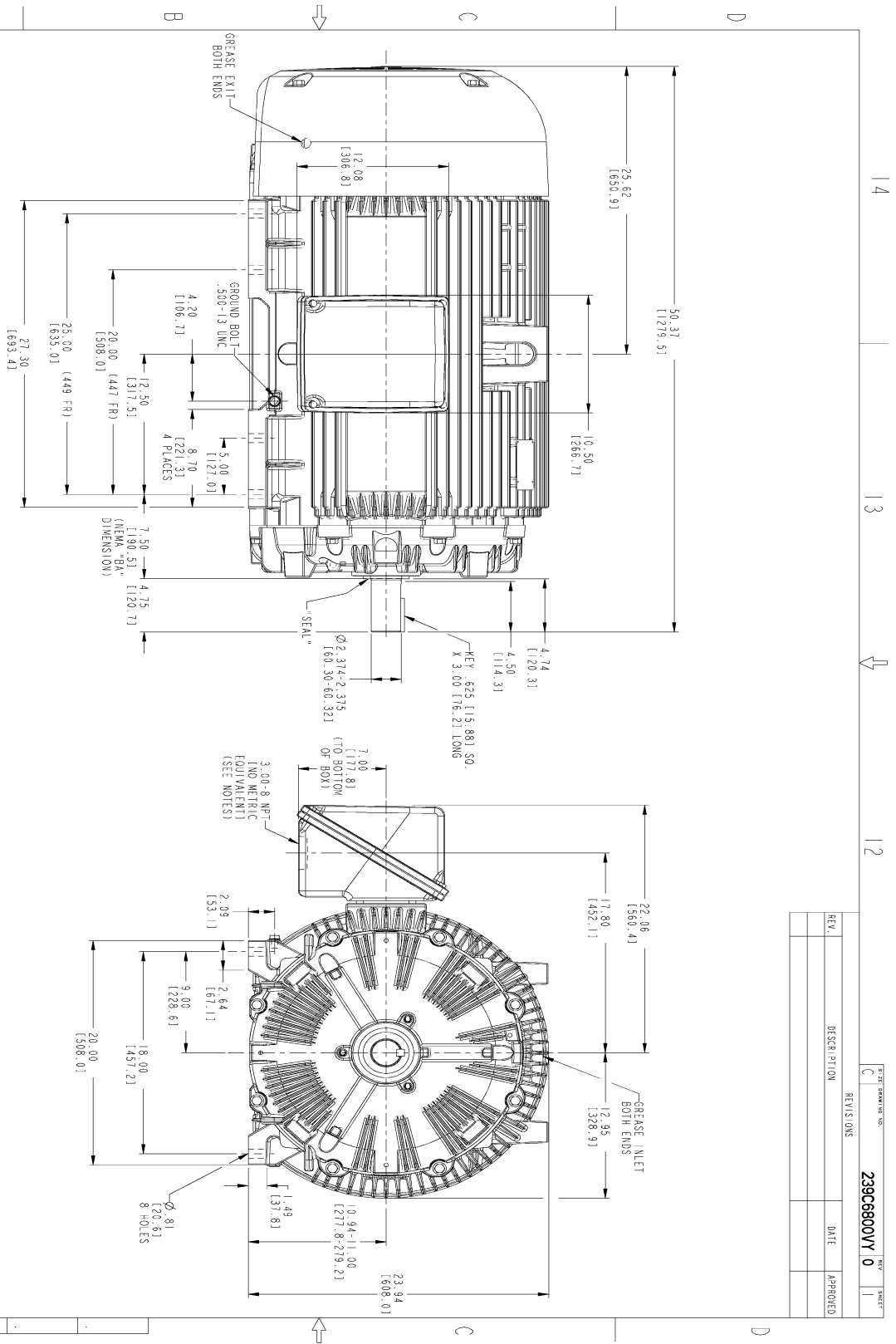
This motor is capable of two cold or one hot start with a maximum connected load inertia of 572 Lb-Ft Sq (24.08 Kg-meter Sq)at 100% voltage, where the load torque varies with the square of the speed. Acceleration time with maximum inertia and the above load type is 29 seconds. Safe stall time at 100% voltage is 71 seconds cold, 34 seconds hot. Rotor inertia is 43.07 Lb-Ft Sq (1.81 Kg-meter Sq).

Open Circuit A-C:	2.145	Short Circuit D-C:	0.033
Short Circuit A-C:	0.07	X/R Ratio:	12.541
Stator Slots:	48	Rotor Slots:	38

Speed Torque Current Curve (First Connection, First Speed)



Marks:

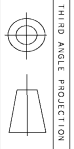


REV.	DESCRIPTION	DATE	APPROVED

SIZE	SCALE	REV	SHEET
C	0.180	0	1

NOTES:

1. CONDUIT BOX MAY BE PLACED WITH THE ENTRANCE DOWN, UP OR ON EITHER SIDE.
2. F-1 ASSEMBLY AS SHOWN.
3. F-2 ASSEMBLY CONDUIT BOX ON OPPOSITE SIDE.
4. BRACKETED DIMENSIONS ARE METRIC (MILLIMETERS).
5. TOLERANCE ON PERMISSIBLE SHAFT EXTENSION RINOUT IS .0015 T.I.R.

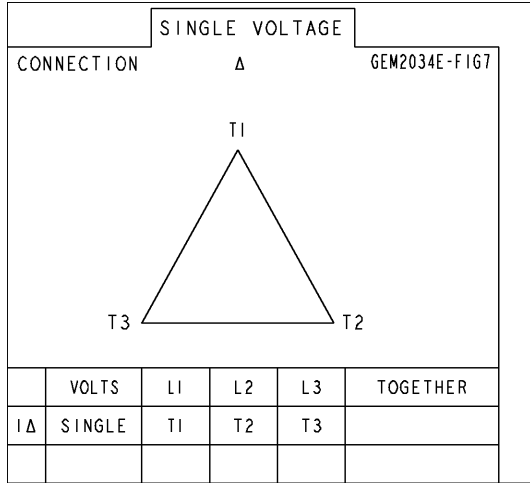


THIRD ANGLE PROJECTION

MODEL	SIGNATURES	DATE	<p>GENERAL ELECTRIC COMPANY</p> <p>OUTLINE</p> <p>447/449 TS TEFC XSD 841</p> <p>700 CU. IN. C. BOX</p> <p>239C6800VY</p>							
SCALE	TEKAMI	01/20/15								
CHECKED	YOKAI	01/20/15								
DESIGN	YOKAI	01/20/15								
DRAWN	TEKAMI	01/20/15								
ISSUED	TEKAMI	01/20/15	SIZE	DRAWING	SCALE	0.180	REF. NO.	239C6800VY	SHEET	1 OF 1
DISTRIBUTION:		MMP								

Marks:

Connection Diagram
GEM2034E-FIG7



End shield Assembly		
Part Description	DE Side Part#	ODE Side Part#
End Shield	115E4354AA1	115E4354LL1
Bearing	235A2616AA01	235A2616AA01
Slinger/Inproseal	235A4575GS3	235A4575GS3

Fan & Fan Cover Assembly	
Part Description	Part#
Fan	159C7100AA1
Fan Cover	128D6841AA1

Conduit & Accessories Box Assembly	
Part Description	Part#
Conduit Box	118D4408DG2

Mechanical Accessories	
Part Description	Part#
Brake	
Tachometer	