

Product Information Packet

July 27, 2016

Data shown is for the current revision model #. Ensure your nameplate model # matches.

Model Number:	5KS449SAA1007C
Catalog Number:	M9394
Instruction Manual:	GEI-56128
Connection Diagram:	GEM2034E-FIG20
Outline Drawing:	239C6800AB

Accessory Connection Diagrams			
Bearing Thermocouple:	None	Heater:	None
RTD:	None	Thermistor:	None
Thermostat:	None	Winding Thermocouple:	None
Bearing RTD:	None		

Table of Contents	
Specification	01
Performance Characteristics	02
Outline Drawing	03
Connection Drawing(s)	04

Marks:

MODEL NUMBER:	5KS449SAA1007C	Estimated Weight:	2770 Lbs
Outline Drawing:	239C6800AB	Time Rating:	CONT
Connection Diagram:	GEM2034E-FIG20	Enclosure:	TEFC
Instruction Book:	GEI-56128	Encl Construction:	X\$D
Design Code:	49BD0087B	Ambient Max(°C):	40
Type:	KS	Alt Ambient Max(°C):	60
Frame:	449TS	Insulation Class:	H
Phases:	3	NEMA Design:	B
Poles:	2	Nominal Efficiency:	95.8 %
Output Power:	250HP 185KW	Guaranteed Efficiency:	95.4
RPM:	3580	3/4 Load Efficiency:	96.2
Voltage:	575	KVA Code:	G
Hertz:	60	Max KVAR:	38.1
Amps - FL:	211.0	Power Factor:	92.5
Service Factor:	1.15	Bearing - DE:	6314ZC3
Alt Service Factor:	1.00	Bearing - ODE:	6314ZC3

Enclosure is Totally Enclosed Fan-Cooled

Stamped Nameplate Notes:

FOR DIRECT COUPLED LOAD ONLY
 ROT CCW FACING ODE LEAD/PH SEQ 3-2-1/1-2-3
 INVERTER DUTY PER NEMA MG1 PART 31
 ALTERNATE RATING FOR PWM CONTROL:1.0SF 40C AMBIENT
 VAR TORQUE RANGE 0-60 HZ
 CONSTANT TORQUE RANGE:45-60HZ

Additional Information:

2P - TS EXTN - SPLIT LEAD
 CCW ROTATION FACING OPPOSITE DRIVE END
 700 CU IN - 3.00" NPT
 OIL RESISTANT SLEEVING ON LEADS
 F1 MOUNTING

Performance Characteristics

1st Winding 1st Connection

Design: 49BD0087B

Marks:

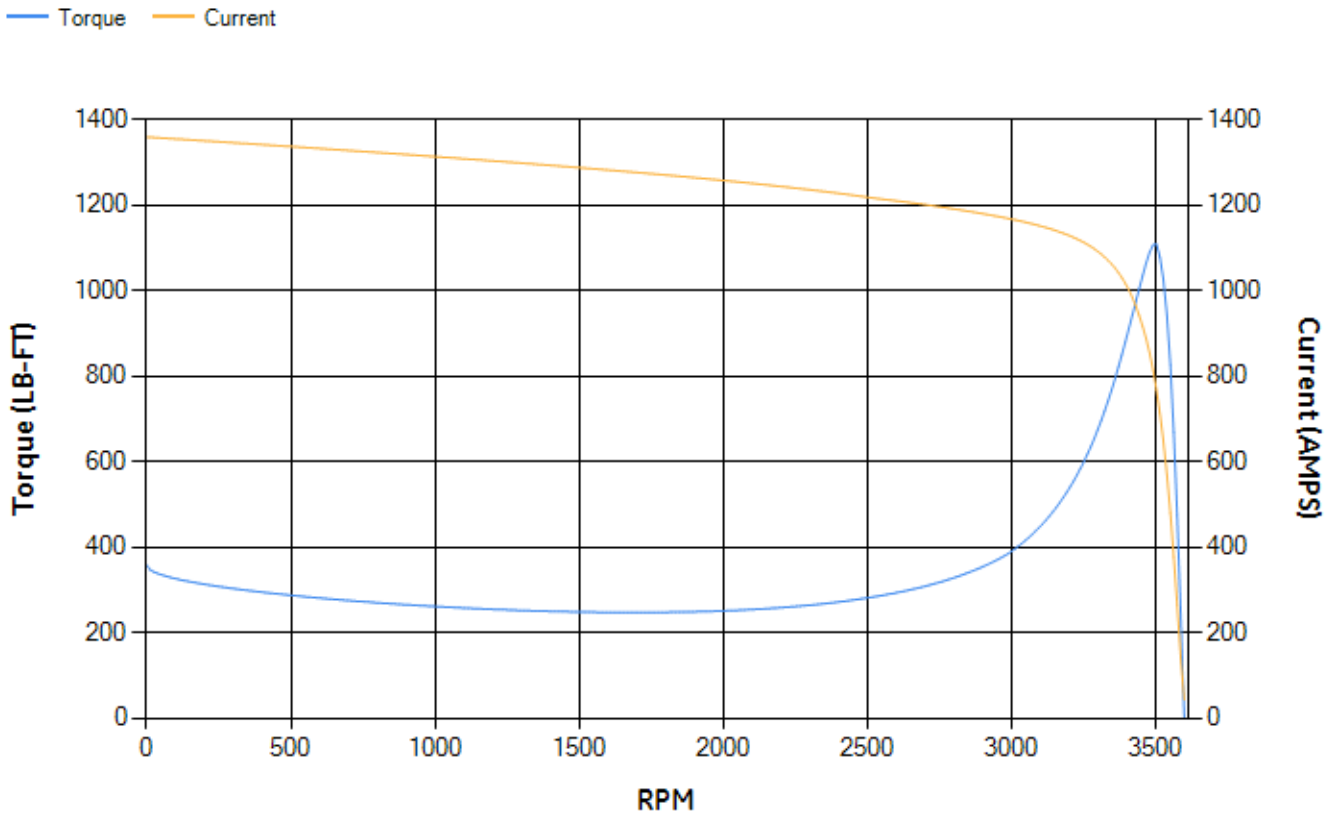
LOAD %	125.0	115.0	100.0	75.0	50.0	25.0	0.0
% EFF	95.53	95.73	96.18	96.21	95.97	94.08	0.00
% PF	92.23	92.4	92.42	91.55	88.01	73.79	5.95
AMPS	265.56	243.37	210.59	159.4	110.81	67.41	42.37

TORQ(FL)#FT	366.75	TORQ(LR)%FL	97.39	TORQ(BD)%FL	302.69
AMPS(LR)	1358.64	PF AT START	0.18		

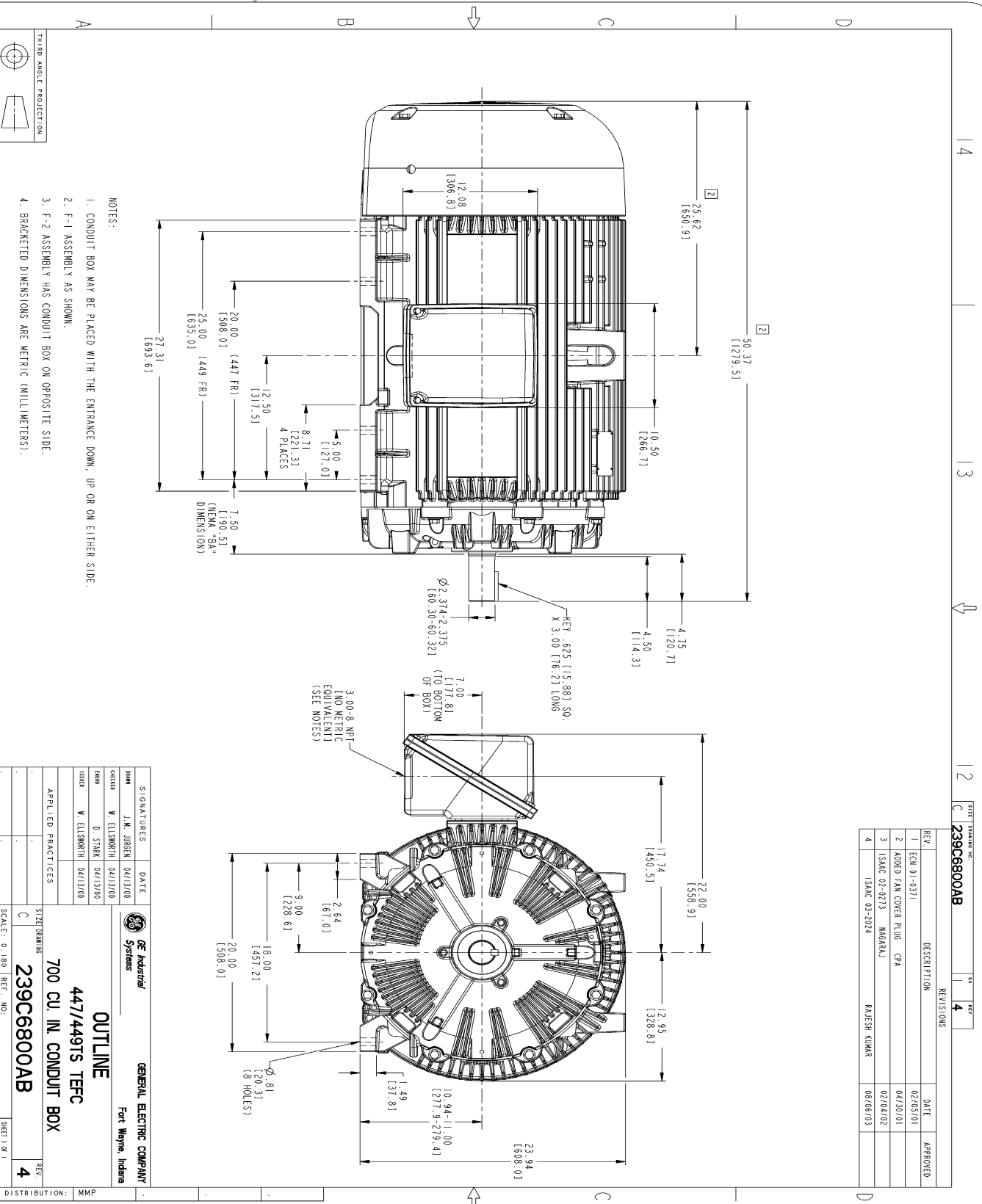
This motor is capable of two cold or one hot start with a maximum connected load inertia of 734 Lb-Ft Sq (30.9 Kg-meter Sq)at 100% voltage, where the load torque varies with the square of the speed. Acceleration time with maximum inertia and the above load type is 41 seconds. Safe stall time at 100% voltage is 97 seconds cold, 50 seconds hot. Rotor inertia is 48.55 Lb-Ft Sq (2.04 Kg-meter Sq).

Open Circuit A-C:	2.263	Short Circuit D-C:	0.038
Short Circuit A-C:	0.074	X/R Ratio:	14.286
Stator Slots:	48	Rotor Slots:	38

Speed Torque Current Curve (First Connection, First Speed)



Marks:



REV.		DESCRIPTION	DATE	APPROVED
1	ECN 01-0371		02/05/01	
2	ADDED FAN COVER PLUG - CPA		04/30/01	
3	ISAC 02-0213 - MARGRAJ		02/04/02	
4	ISAC 03-2024	RAJESH KUMAR	08/06/03	

SIGNATURES	DATE	GENERAL ELECTRIC COMPANY Fort Wayne, Indiana
DESIGNER: J.M. JOHNSON	04/13/00	OUTLINE 447/449TS TFFC 700 CU. IN. CONDUIT BOX 239C6800AB
CHECKED: W. ELLSWORTH	04/13/00	
DRAWN: D. STARK	04/13/00	
ISSUED: W. ELLSWORTH	04/13/00	

SCALE: 0.180 REF. NO.: SHEET 1 OF 1 DISTRIBUTION: MMP

Marks:

Connection Diagram
GEM2034E-FIG20

