

Product Information Packet

November 8, 2016

Data shown is for the current revision model #. Ensure your nameplate model # matches.

Model Number:	5KS215STE104A
Catalog Number:	M7506
Instruction Manual:	GEI-M1031
Connection Diagram:	GEM2034E-FIG1
Outline Drawing:	358B6271AB

Accessory Connection Diagrams			
Bearing Thermocouple:	None	Heater:	None
RTD:	None	Thermistor:	None
Thermostat:	None	Winding Thermocouple:	None
Bearing RTD:	None		

Table of Contents	
Specification	01
Performance Characteristics	02
Outline Drawing	03
Connection Drawing(s)	04

Marks:

MODEL NUMBER:	5KS215STE104A	Estimated Weight:	184 Lbs
Outline Drawing:	358B6271AB	Time Rating:	CONT
Connection Diagram:	GEM2034E-FIG1	Enclosure:	TEFC
Instruction Book:	GEI-M1031	Encl Construction:	SD
Design Code:	21AD0014B	Ambient Max(°C):	40
Type:	KS	Alt Ambient Max(°C):	--
Frame:	215T	Insulation Class:	F
Phases:	3	NEMA Design:	A
Poles:	2	Nominal Efficiency:	90.2 %
Output Power:	10HP 7.4KW	Guaranteed Efficiency:	88.5
RPM:	3505	3/4 Load Efficiency:	92.4
Voltage:	575	KVA Code:	J
Hertz:	60	Max KVAR:	2.3
Amps - FL:	9.4	Power Factor:	88
Service Factor:	1.15	Bearing - DE:	6308ZZC3
Alt Service Factor:	--	Bearing - ODE:	6208ZZC3

Enclosure is Totally Enclosed Fan-Cooled

Stamped Nameplate Notes:**Additional Information:**

2 POLE, TEFC, LRA: 72.7 AMPS.
 SOUND POWER : 91 DBA
 GREASE: SHELL ALVANIA R3 LITHIUM GREASE
 NO. OF MOTOR LEADS: 3
 CONDUIT BOX VOLUME (CU IN): 66.7
 CONDUIT BOX MATERIAL: CAST IRON
 SUITABLE FOR USE IN CLASS I DIVISION 2 LOCATIONS
 CLASS I DIVISION 2 GROUPS A,B,C,D T3C
 CLASS I ZONE 2 IIC T3C

Performance Characteristics

1st Winding 1st Connection

Design: 21AD0014B

Marks:

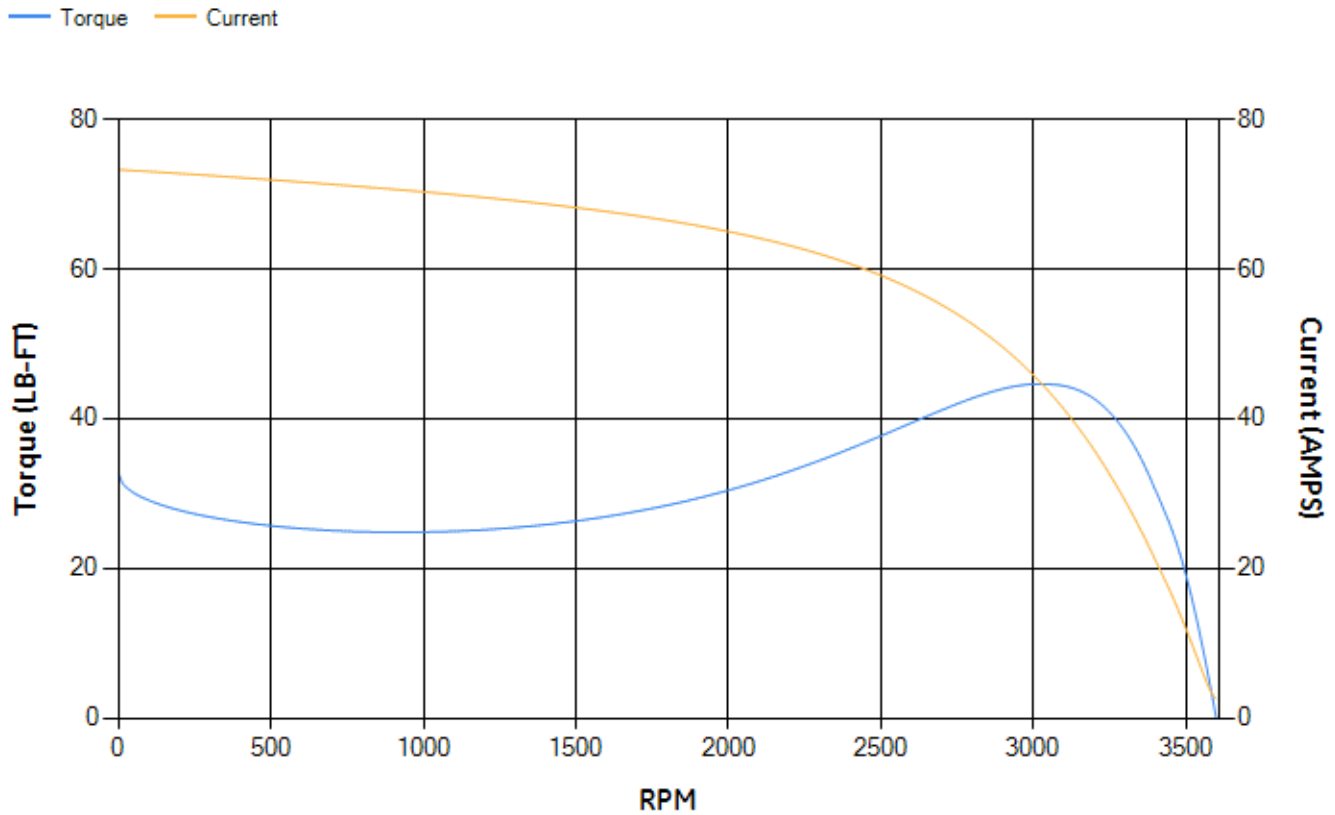
LOAD %	125.0	115.0	100.0	75.0	50.0	25.0	0.0
% EFF	89.9	90.55	91.58	92.36	92.49	89.87	0.00
% PF	88.52	88.58	88.27	86.18	79.88	60.72	6.75
AMPS	11.76	10.74	9.26	7.06	5.07	3.43	2.58

TORQ(FL)#FT	14.98	TORQ(LR)%FL	218.39	TORQ(BD)%FL	291.82
AMPS(LR)	73.28	PF AT START	0.34		

This motor is capable of two cold or one hot start with a maximum connected load inertia of 44 Lb-Ft Sq (1.85 Kg-meter Sq)at 100% voltage, where the load torque varies with the square of the speed. Acceleration time with maximum inertia and the above load type is 20 seconds. Safe stall time at 100% voltage is 34 seconds cold, 24 seconds hot. Rotor inertia is 0.49 Lb-Ft Sq (0.02 Kg-meter Sq).

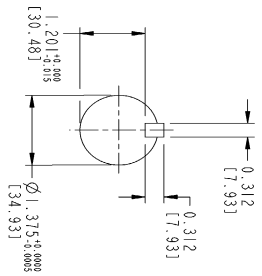
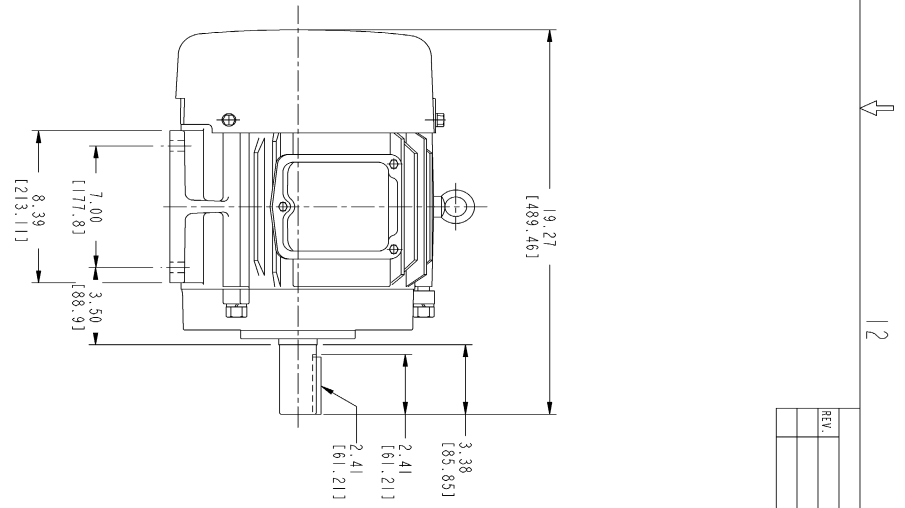
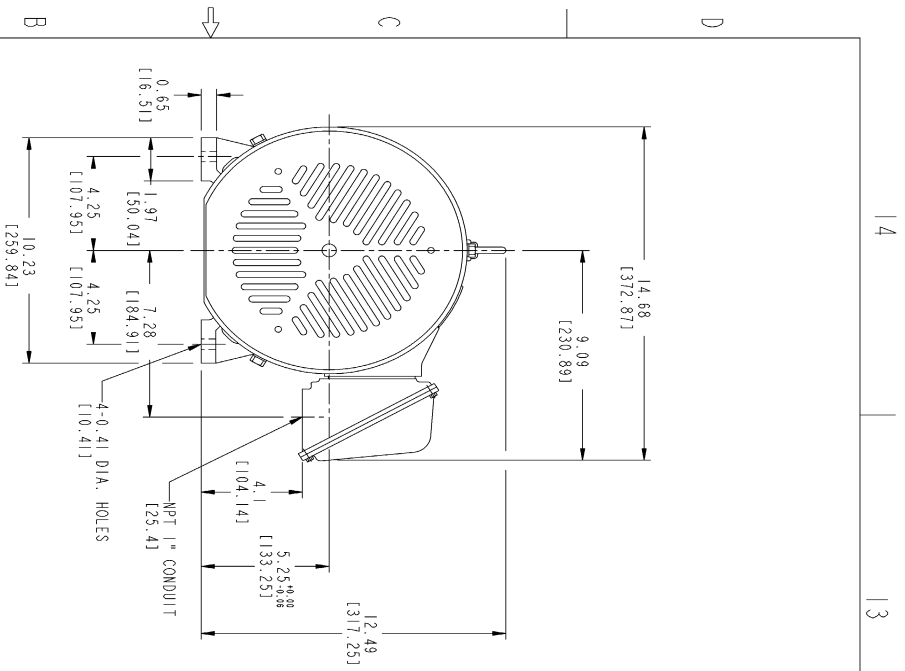
Open Circuit A-C:	0.363	Short Circuit D-C:	0.014
Short Circuit A-C:	0.012	X/R Ratio:	5.29
Stator Slots:	24	Rotor Slots:	18

Speed Torque Current Curve (First Connection, First Speed)

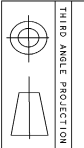


NAME:501291659 OBJECT:358B6271AB DATE:05-Dec-07 10:11:48

Marks:



- NOTES :
1. DIMENSIONS ARE IN INCHES.
 2. F-1 ASW AS SHOWN.
 3. F-2 ASW - HAS CONDUIT BOX ON OPPOSITE SIDE.
 4. BRACKETED DIMENSIONS ARE METRIC (MILLIMETERS)
 5. IC411, IP54, IMB34 APPLY



THIRD ANGLE PROJECTION

Part must conform to SI 9000000 Sect 4, Toxicity Procedure

FOR ADDITIONAL INFO REFER TO:	SIGNATURES	DATE
REFLECTED DIMENSIONS	MODEL	
UNLESS OTHERWISE SPECIFIED DIMENSIONS ARE IN INCHES	DESIGNED BY	11/05/07
TOLERANCE ON:	CHECKED BY	11/05/07
1 PL DECIMALS ±	DATE	
2 PL DECIMALS ±	ISSUED BY	11/05/07
3 PL DECIMALS ±	ISSUED DATE	
ANGLES ±	ISSUED BY	
FRACTIONS ±	ISSUED DATE	
FINISH	ISSUED BY	
	ISSUED DATE	

GE Consumer & Industrial		GENERAL ELECTRIC COMPANY	
OUTLINE			
F1D - 21ST TERC GE MARK			
66.7 CU IN CONDUIT BOX			
TITLE: 358B6271AB		SHEET 1 OF 1	
SCALE: C		REV: 0	

REV.	DESCRIPTION	DATE	APPROVED

Marks:

Connection Diagram
GEM2034E-FIG1

