

Product Information Packet

November 8, 2016

Data shown is for the current revision model #. Ensure your nameplate model # matches.

Model Number:	5KS145STE205RG3
Catalog Number:	M7554
Instruction Manual:	GEI-M1031
Connection Diagram:	GEM2034E-FIG203
Outline Drawing:	358B6269AC

Accessory Connection Diagrams			
Bearing Thermocouple:	None	Heater:	None
RTD:	None	Thermistor:	None
Thermostat:	None	Winding Thermocouple:	None
Bearing RTD:	None		

Table of Contents	
Specification	01
Performance Characteristics	02
Outline Drawing	03
Connection Drawing(s)	04

Marks:

MODEL NUMBER:	5KS145STE205RG3	Estimated Weight:	67 Lbs
Outline Drawing:	358B6269AC	Time Rating:	CONT
Connection Diagram:	GEM2034E-FIG203	Enclosure:	TEFC
Instruction Book:	GEI-M1031	Encl Construction:	SD
Design Code:	14AD1013A	Ambient Max(°C):	40
Type:	KS	Alt Ambient Max(°C):	--
Frame:	145T	Insulation Class:	F
Phases:	3	NEMA Design:	B
Poles:	4	Nominal Efficiency:	86.5 %
Output Power:	2HP 1.5KW	Guaranteed Efficiency:	84.0
RPM:	1730	3/4 Load Efficiency:	88.9
Voltage:	230/460	KVA Code:	L
Hertz:	60	Max KVAR:	0.9
Amps - FL:	5.4/2.7	Power Factor:	79.5
Service Factor:	1.15	Bearing - DE:	6205ZZC3
Alt Service Factor:	--	Bearing - ODE:	6205ZZC3

Enclosure is Totally Enclosed Fan-Cooled

Stamped Nameplate Notes:

USABLE AT 200V @ 2 HP, 5.9 AMPS @ 1.0 SF

LRA: 40.2/20.1

50HZ DATA: 1.5 HP, 200/400V, 5.4/2.7 AMPS @ 1.15 SF

50HZ DATA: 2 HP, 200/400V, 6.2/3.1 AMPS @ 1.00 SF

GREASE TYPE: SHELL ALVANIA R3 LITHIUM GREASE

Additional Information:

CONDUIT BOX VOLUME (CU IN): 47.1

CONDUIT BOX MATERIAL: CAST IRON

INVERTER DUTY PER NEMA MG1 PART 31

FOR VARIABLE TORQUE LOADS

BAM 1/12



Performance Characteristics

1st Winding 1st Connection

Design: 14AD1013A

Marks:

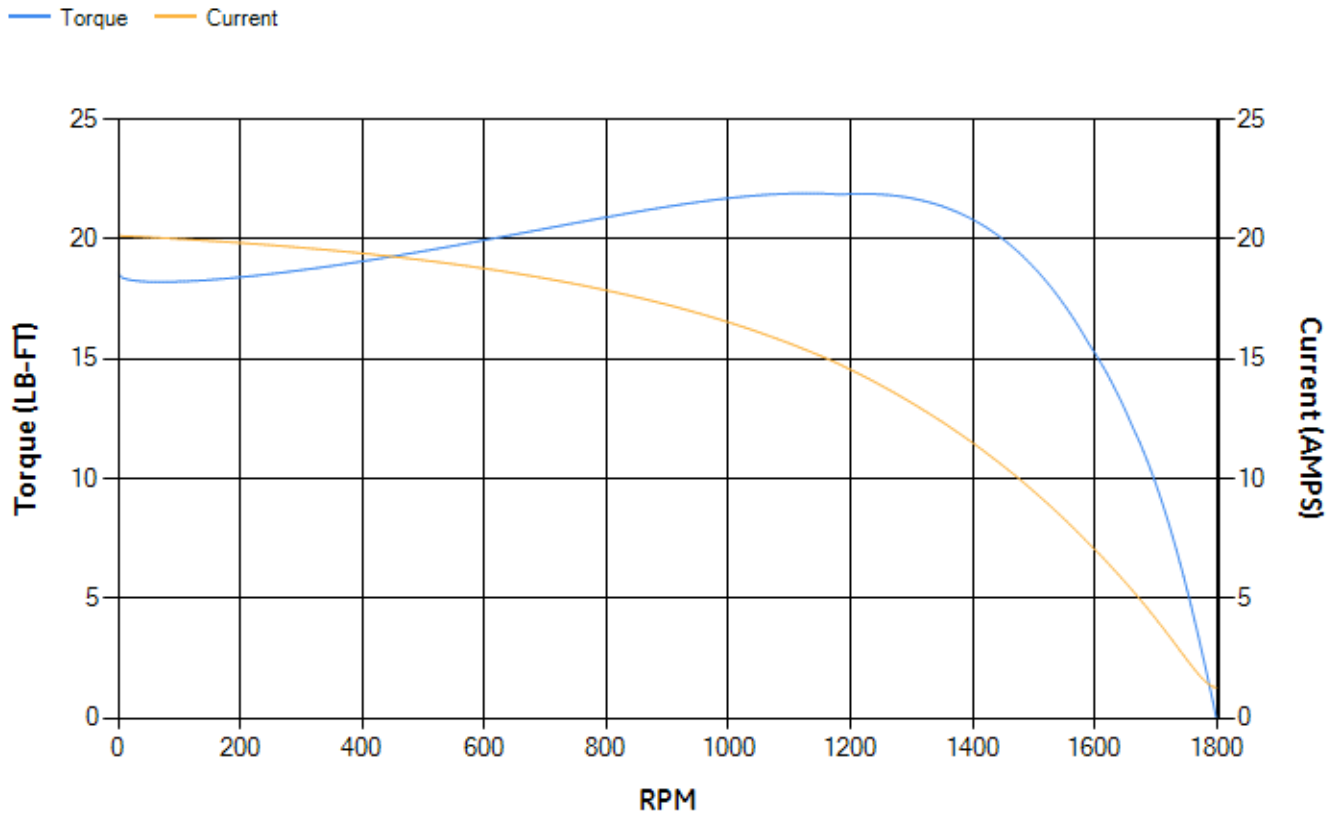
LOAD %	125.0	115.0	100.0	75.0	50.0	25.0	0.0
% EFF	86.71	87.36	88.36	88.86	88.17	82.94	0.00
% PF	82.65	81.67	79.54	73.4	61.65	40.05	6.49
AMPS	3.26	3.02	2.66	2.15	1.72	1.41	1.26

TORQ(FL)#FT	6.06	TORQ(LR)%FL	306.19	TORQ(BD)%FL	355.04
AMPS(LR)	20.14	PF AT START	0.55		

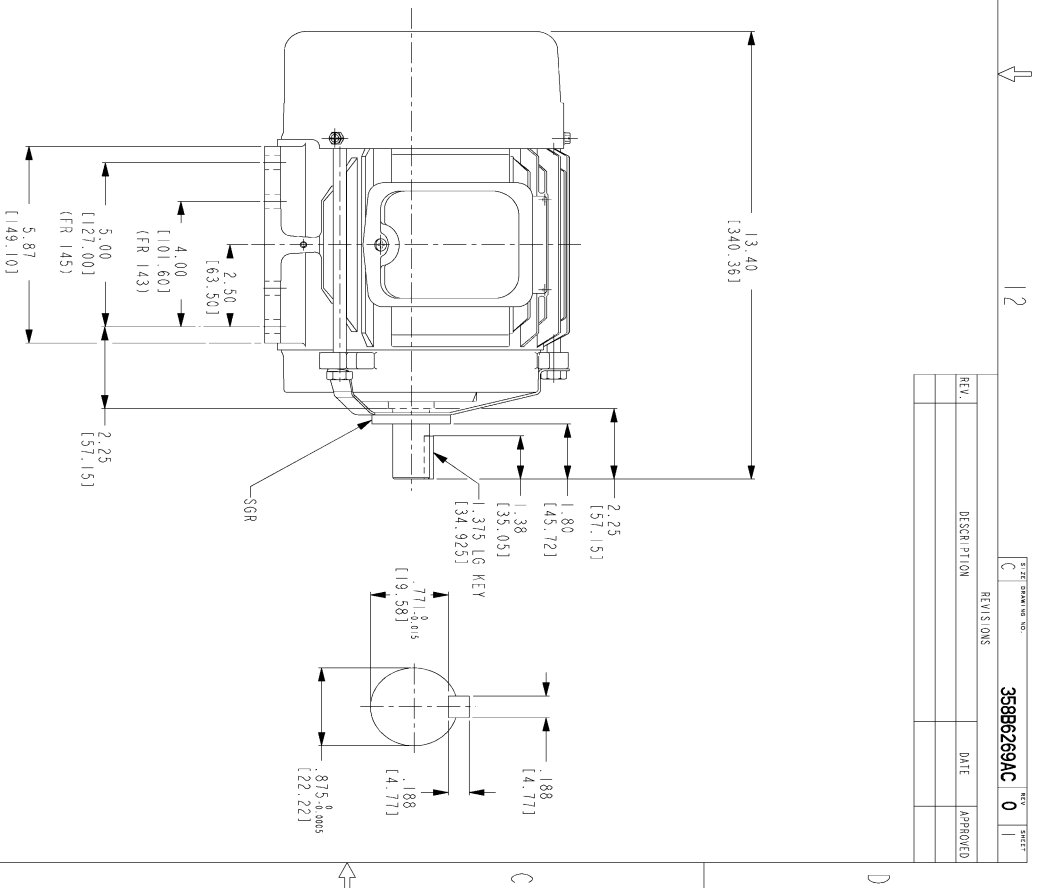
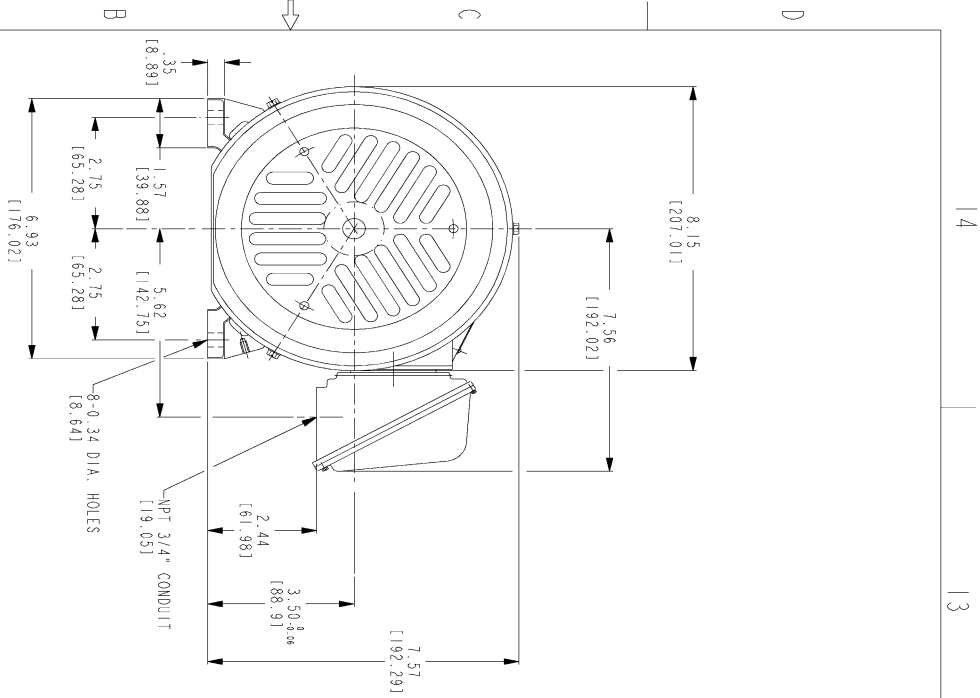
This motor is capable of two cold or one hot start with a maximum connected load inertia of 90 Lb-Ft Sq (3.79 Kg-meter Sq) at 100% voltage, where the load torque varies with the square of the speed. Acceleration time with maximum inertia and the above load type is 30 seconds. Safe stall time at 100% voltage is 71 seconds cold, 49 seconds hot. Rotor inertia is 0.13 Lb-Ft Sq (0.01 Kg-meter Sq).

Open Circuit A-C:	0.139	Short Circuit D-C:	0.007
Short Circuit A-C:	0.007	X/R Ratio:	2.676
Stator Slots:	36	Rotor Slots:	28

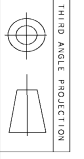
Speed Torque Current Curve (First Connection, First Speed)



Marks:



- NOTES:
1. DIMENSIONS ARE IN INCHES.
 2. F-1 ASM AS SHOWN.
 3. F-2 ASM - HAS CONDUIT BOX ON OPPOSITE SIDE.
 4. BRACKETED DIMENSIONS ARE METRIC (MILLIMETERS)
 5. IC411, IP34, IMB34 APPLY.



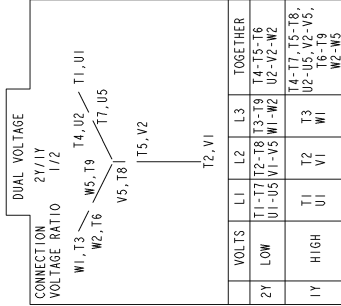
THIRD ANGLE PROJECTION

REV.	DESCRIPTION	DATE	APPROVED

MODEL	SIGNATURES	DATE	 GENERAL ELECTRIC COMPANY
SCALE	SHANKAR	06/24/11	
DESIGN	VENKAT	06/24/11	OUTLINE FTD - 143T/145T TFC CE MARK WITH SGR 471 CU IN CONDUIT BOX 358B6269AC
CHKD	VENKAT	06/24/11	
DATE	VENKAT	06/24/11	
ISSUED	SHANKAR	06/24/11	
SCALE: DRAWING SCALE	C	SCALE: MODEL NAME	REV
			0
			SHEET 1 OF 1

Marks:

Connection Diagram
GEM2034E-FIG203



NAME: 500903578 OBJECT: GEM2034E-FIG203 DATE: 03-Nov-06 13:53:10