

Product Information Packet

November 8, 2016

Data shown is for the current revision model #. Ensure your nameplate model # matches.

Model Number:	5KS449XAA353B
Catalog Number:	M9371
Instruction Manual:	GEI-56128
Connection Diagram:	GEM2034E-FIG8
Outline Drawing:	239C6800ZB

Accessory Connection Diagrams			
Bearing Thermocouple:	None	Heater:	None
RTD:	None	Thermistor:	None
Thermostat:	None	Winding Thermocouple:	None
Bearing RTD:	None		

Table of Contents

Specification	01
Performance Characteristics	02
Outline Drawing	03
Connection Drawing(s)	04
Spare parts	05



Marks:

MODEL NUMBER:	5KS449XAA353B	Estimated Weight:	3200 Lbs
Outline Drawing:	239C6800ZB	Time Rating:	CONT
Connection Diagram:	GEM2034E-FIG8	Enclosure:	TEFC
Instruction Book:	GEI-56128	Encl Construction:	841
Design Code:	49BD3064B	Ambient Max(°C):	40
Type:	KS	Alt Ambient Max(°C):	--
Frame:	449T	Insulation Class:	H
Phases:	3	NEMA Design:	B
Poles:	6	Nominal Efficiency:	95.8 %
Output Power:	250HP 185KW	Guaranteed Efficiency:	95.4
RPM:	1190	3/4 Load Efficiency:	96.2
Voltage:	575	KVA Code:	G
Hertz:	60	Max KVAR:	77.5
Amps - FL:	234.0	Power Factor:	83.5
Service Factor:	1.15	Bearing - DE:	NU 318
Alt Service Factor:	--	Bearing - ODE:	6318ZC3

Enclosure is Totally Enclosed Fan-Cooled

Stamped Nameplate Notes:

IEEE-STD-841-2009
 ROLLER BEARING - FOR BELTED LOAD ONLY
 DE BRG 90RU03M, ODE BRG 90BC03JP3
 STAMP NP249A5564P051 AS BELOW:
 MODEL:5KS449XAA353B S/N: XXX
 CSA CERTIFIED CSA09.2216219 FOR EX NA IIC 200 C GC
 CL 1 ZONE2 AEX NA IIC 200C;CL 1 DIV2 GRP ABCD 200C
 IN -25C <= AMB <= 40C, 1.0 SF ON SINE-WAVE PWR
 SURF TEMP 260C AT 1.15SF ON SINE-WAVE PWR
 OR 200C VT OR 230C CT OR 200C CHP PWM CONTROL
 ALTERNATE RATING FOR PWM CONTROL 1.0SF 40C AMB
 VT 0 - 60 HZ, CT 45-60 HZ, CHP 60-90 HZ.

Additional Information:

6P - T EXTN - SPLIT LEAD
 PAINTED FRAME ID & SHAFT,
 FAN COVER INSIDE & ODE E/S OUTSIDE
 700 CU IN - 3.00" NPT WITH DRAIN HOLES
 INPRO SEAL BOTH ENDS
 OIL RESISTANT SLEEVING ON LEADS
 .002" TIR SHAFT RUNOUT
 ROUTINE TEST REPORT AND 5 POINT VIBRATION TEST
 REPORT INCLUDED IN C/B
 COPPER WASHER UNDER HEADS OF BEARING CAP BOLTS,
 APPLY TITE-SEAL (A50CD427A) ON BEARING CAP SCREWS,
 RABBETS AND PLUG THREADS.
 B5F4C4 HIGH FATIGUE STEEL AISI 4142 SHAFT MATERIAL



GROUND PAD
F1 MOUNTING

Performance Characteristics

1st Winding 1st Connection

Design: 49BD3064B

Marks:

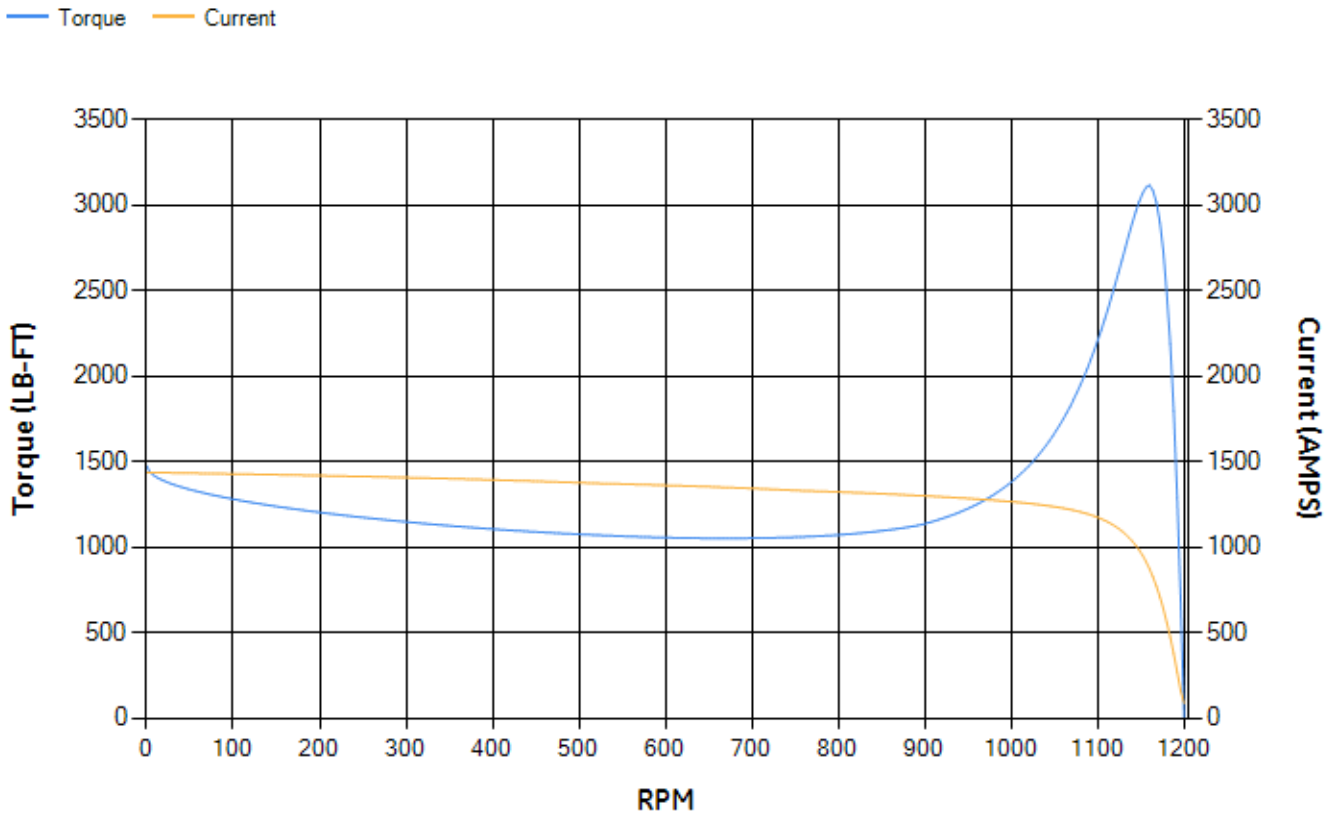
LOAD %	125.0	115.0	100.0	75.0	50.0	25.0	0.0
% EFF	95.31	95.55	96.05	96.16	96.03	94.3	0.00
% PF	84.69	84.35	83.33	79.52	70.34	48.13	2.7
AMPS	289.86	267.09	233.89	183.61	138.56	103.1	86.43

TORQ(FL)#FT	1100.87	TORQ(LR)%FL	133.82	TORQ(BD)%FL	282.47
AMPS(LR)	1435.27	PF AT START	0.23		

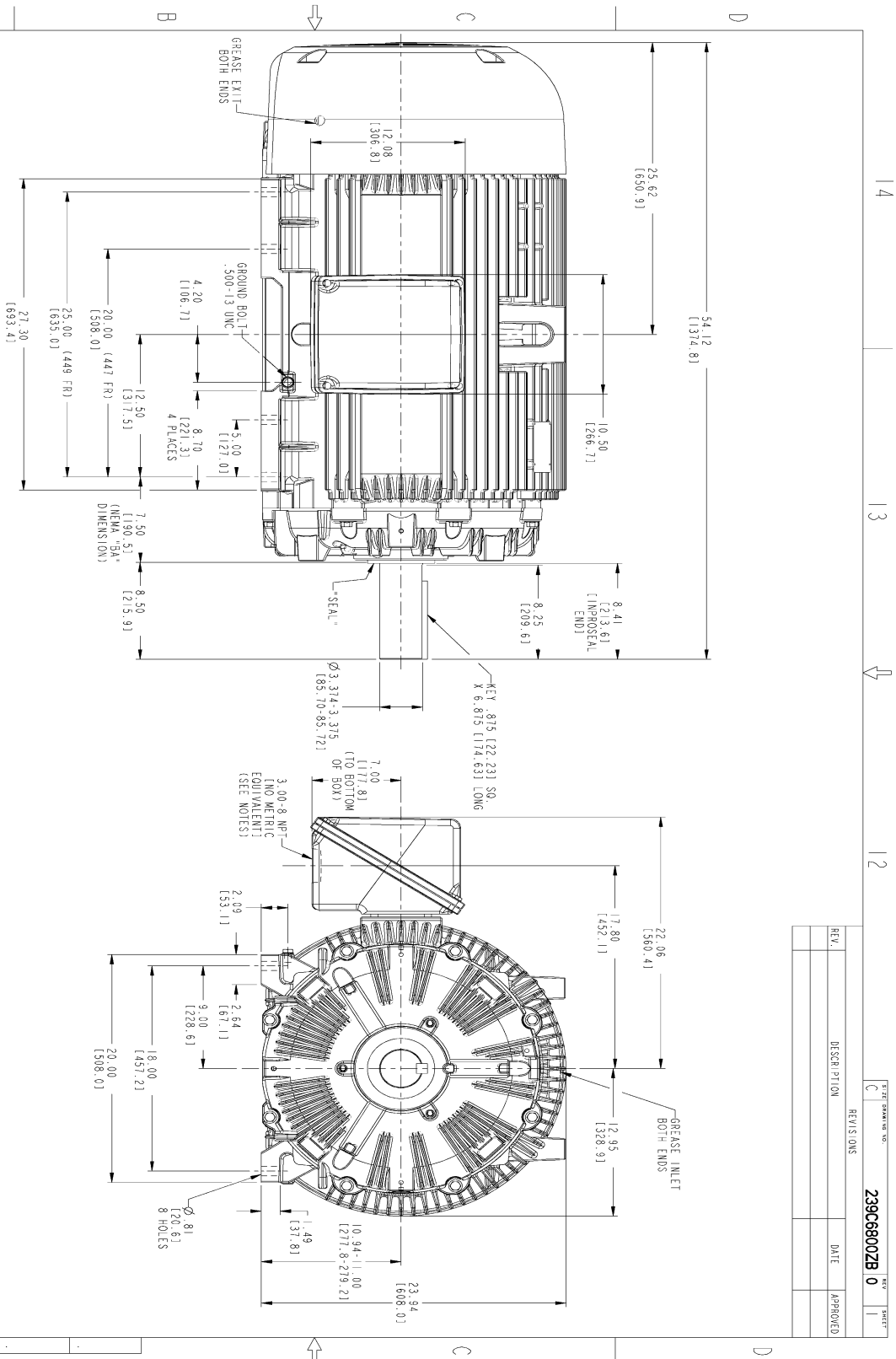
This motor is capable of two cold or one hot start with a maximum connected load inertia of 14450 Lb-Ft Sq (608.34 Kg-meter Sq)at 100% voltage, where the load torque varies with the square of the speed. Acceleration time with maximum inertia and the above load type is 61 seconds. Safe stall time at 100% voltage is 146 seconds cold, 73 seconds hot. Rotor inertia is 214.07 Lb-Ft Sq (9.01 Kg-meter Sq).

Open Circuit A-C:	1.078	Short Circuit D-C:	0.033
Short Circuit A-C:	0.06	X/R Ratio:	12.424
Stator Slots:	72	Rotor Slots:	58

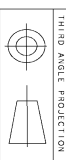
Speed Torque Current Curve (First Connection, First Speed)



Marks:



- NOTES:
1. CONDUIT BOX MAY BE PLACED WITH THE ENTRANCE DOWN, UP OR ON EITHER SIDE.
 2. F-1 ASSEMBLY AS SHOWN.
 3. F-2 ASSEMBLY CONDUIT BOX ON OPPOSITE SIDE.
 4. BRACKETED DIMENSIONS ARE METRIC (MILLIMETERS).
 5. TOLERANCE ON PERMISSIBLE SHAFT EXTENSION ROUNDOFF IS .002 T.I.R.

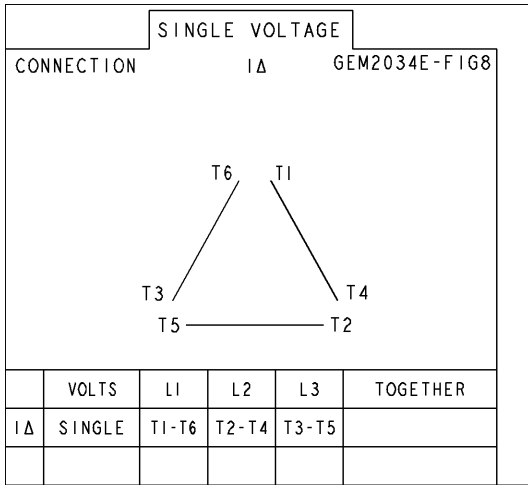


REV.	DESCRIPTION	DATE	APPROVED

SIGNATURES	DATE	<p>GENERAL ELECTRIC COMPANY</p> <p>OUTLINE</p> <p>447/449 T TFC 841</p> <p>700 CU. IN. C. BOX, .002 TIR</p> <p>239C6800ZB</p>	
MODEL: WAKHIM 18/07/2015	18/07/2015		
DRAWN: WAKHIM 18/07/2015	18/07/2015		
CHECKED: KARTHIK 18/07/2015	18/07/2015		
DESIGN:			
WIR:			
ISSUED: WAKHIM 18/07/2015	18/07/2015		
SIZE: DRAWING			
SHEET: 0			
SOLID MODEL: 239C6800ZB	SCALE: 0.180	REV. NO. 239C6800ZB	SHEET 1 OF 1
DISTRIBUTION: MMP			

Marks:

Connection Diagram
GEM2034E-FIG8



End shield Assembly		
Part Description	DE Side Part#	ODE Side Part#
End Shield	115E4355AA1	115E4355LL1
Bearing	235A2519AA01	235A2514AG01
Slinger/Inproseal	235A4575GS5	235A4575GS5

Fan & Fan Cover Assembly	
Part Description	Part#
Fan	159C7100G03
Fan Cover	128D6841AA1

Conduit & Accessories Box Assembly	
Part Description	Part#
Conduit Box	118D4408DG2

Mechanical Accessories	
Part Description	Part#
Brake	
Tachometer	