

Product Information Packet

November 8, 2016

Data shown is for the current revision model #. Ensure your nameplate model # matches.

Model Number:	5KS182STE222A
Catalog Number:	M7741
Instruction Manual:	GEI-M1031
Connection Diagram:	GEM2034E-FIG203
Outline Drawing:	358B6276AA

Accessory Connection Diagrams			
Bearing Thermocouple:	None	Heater:	None
RTD:	None	Thermistor:	None
Thermostat:	None	Winding Thermocouple:	None
Bearing RTD:	None		

Table of Contents	
Specification	01
Performance Characteristics	02
Outline Drawing	03
Connection Drawing(s)	04



Marks:

MODEL NUMBER:	5KS182STE222A	Estimated Weight:	118 Lbs
Outline Drawing:	358B6276AA	Time Rating:	CONT
Connection Diagram:	GEM2034E-FIG203	Enclosure:	TEFC
Instruction Book:	GEI-M1031	Encl Construction:	SD
Design Code:	18AD1020A	Ambient Max(°C):	40
Type:	KS	Alt Ambient Max(°C):	--
Frame:	182TC	Insulation Class:	F
Phases:	3	NEMA Design:	A
Poles:	4	Nominal Efficiency:	89.5 %
Output Power:	3HP 2.2KW	Guaranteed Efficiency:	87.5
RPM:	1760	3/4 Load Efficiency:	91.1
Voltage:	230/460	KVA Code:	L
Hertz:	60	Max KVAR:	1.2
Amps - FL:	7.6/3.8	Power Factor:	82
Service Factor:	1.15	Bearing - DE:	6207ZZC3
Alt Service Factor:	--	Bearing - ODE:	6206ZZC3

Enclosure is Totally Enclosed Fan-Cooled

Stamped Nameplate Notes:

USABLE AT 200V @ 3 HP, 8.5 AMPS @ 1.0 SF

LRA: 68.2/34.1

50HZ DATA: 2 HP, 200/400V, 6.8/3.4 AMPS @ 1.15 SF

50HZ DATA: 3 HP, 200/400V, 8.6/4.3 AMPS @ 1.00 SF

GREASE TYPE: SHELL ALVANIA R3 LITHIUM GREASE

Additional Information:

CONDUIT BOX MATERIAL: CAST IRON

DO NOT ASSEMBLE F2 - BLM 2/21/12

SUITABLE FOR USE IN CLASS I DIVISION 2 LOCATIONS

CLASS I DIVISION 2 GROUPS A,B,C,D T3C

CLASS I ZONE 2 IIC T3C



Performance Characteristics

1st Winding 1st Connection

Design: 18AD1020A

Marks:

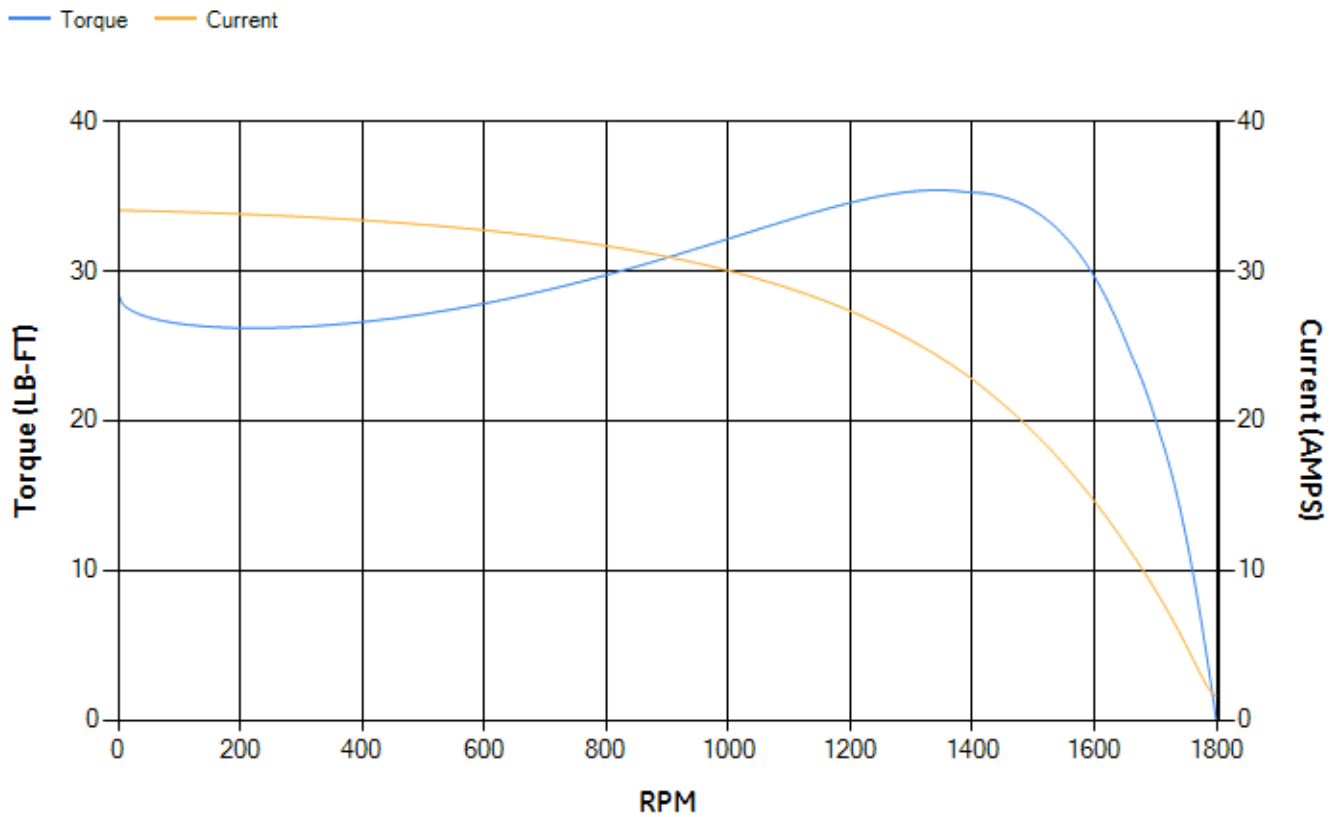
LOAD %	125.0	115.0	100.0	75.0	50.0	25.0	0.0
% EFF	89.81	90.24	90.95	91.13	90.37	85.74	0.00
% PF	84.55	83.79	82.07	76.86	66.12	44.2	6.31
AMPS	4.62	4.27	3.76	3.01	2.35	1.85	1.61

TORQ(FL)#FT	8.95	TORQ(LR)%FL	317.82	TORQ(BD)%FL	388.05
AMPS(LR)	34.06	PF AT START	0.48		

This motor is capable of two cold or one hot start with a maximum connected load inertia of 118 Lb-Ft Sq (4.97 Kg-meter Sq)at 100% voltage, where the load torque varies with the square of the speed. Acceleration time with maximum inertia and the above load type is 26 seconds. Safe stall time at 100% voltage is 62 seconds cold, 49 seconds hot. Rotor inertia is 0.39 Lb-Ft Sq (0.02 Kg-meter Sq).

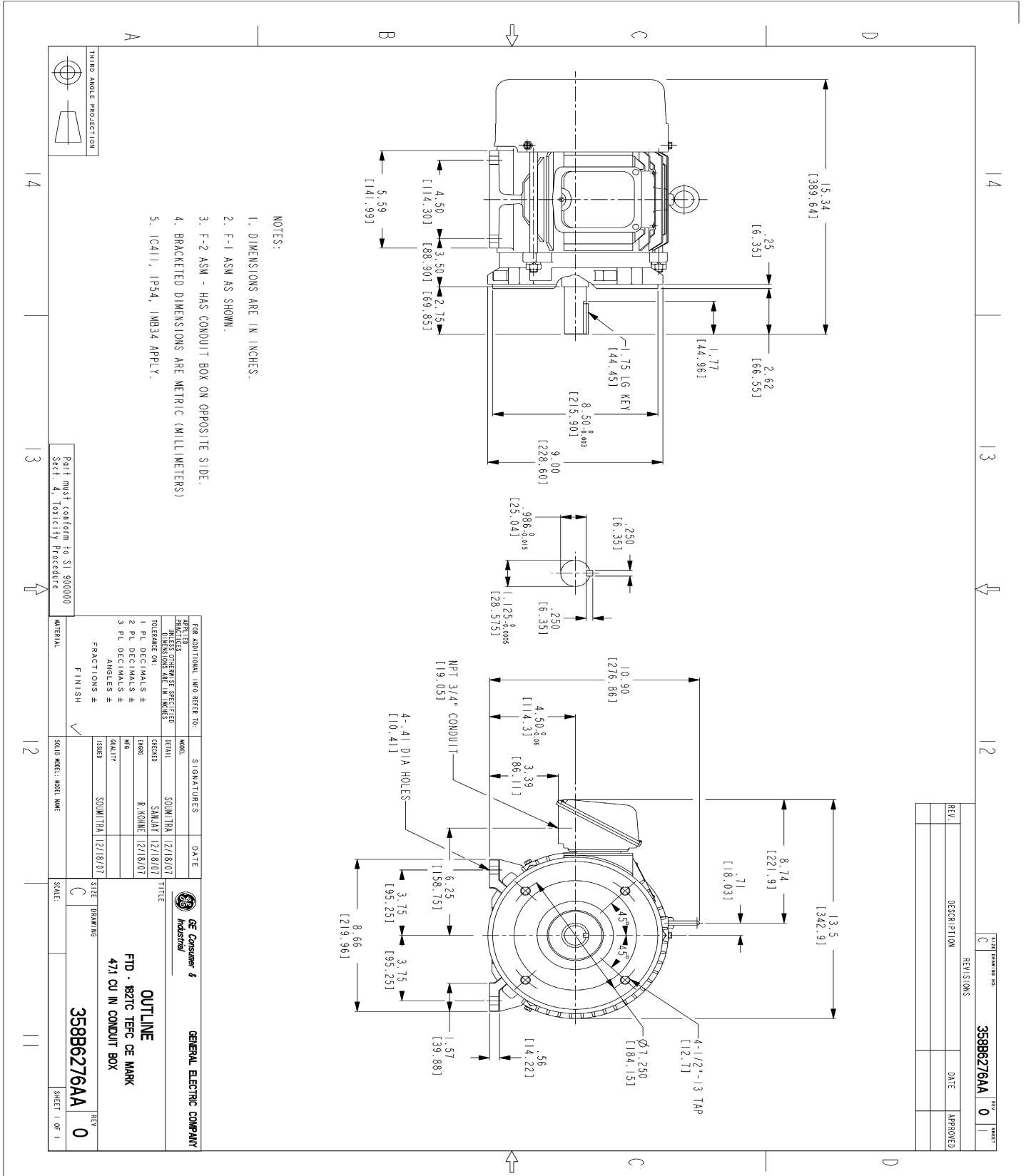
Open Circuit A-C:	0.266	Short Circuit D-C:	0.008
Short Circuit A-C:	0.01	X/R Ratio:	2.929
Stator Slots:	36	Rotor Slots:	28

Speed Torque Current Curve (First Connection, First Speed)



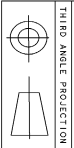
NAME:501291659 OBJECT:358B6276AA DATE:14-Jan-08 11:53:21

Marks:



NOTES:

1. DIMENSIONS ARE IN INCHES.
2. F-1 ASM AS SHOWN.
3. F-2 ASM - HAS CONDUIT BOX ON OPPOSITE SIDE.
4. BRACKETED DIMENSIONS ARE METRIC (MILLIMETERS)
5. ICA11, IP54, IMB34 APPLY.



THIRD ANGLE PROJECTION

Part must conform to SI 9000000 Sect 4, Toxicity Procedure

FOR ADDITIONAL INFO REFER TO:		SIGNATURES		DATE	
REFLECTED DIMENSIONS	MODEL				
UNREFLECTED DIMENSIONS	REV				
TOLERANCE ON DIMENSIONS	DATE				
1 PL DECIMALS ±	ISSUED				
2 PL DECIMALS ±	REVISED				
3 PL DECIMALS ±	DATE				
ANGLES ±					
FRACTIONS ±					
FINISH					

GE Consumer & Industrial
GENERAL ELECTRIC COMPANY
OUTLINE
FID - 182TC TPC GE MARK
471 CU IN CONDUIT BOX

REV.	DESCRIPTION	DATE	APPROVED

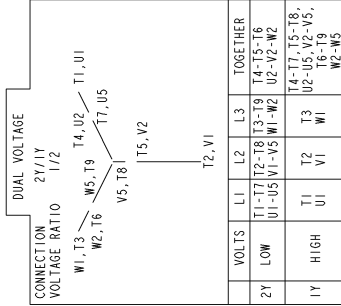
358B6276AA REV 0

358B6276AA REV 0

SHEET 1 OF 1

Marks:

Connection Diagram
GEM2034E-FIG203



NAME: 500903578 OBJECT: GEM2034E-FIG203 DATE: 03-Nov-06 13:53:10