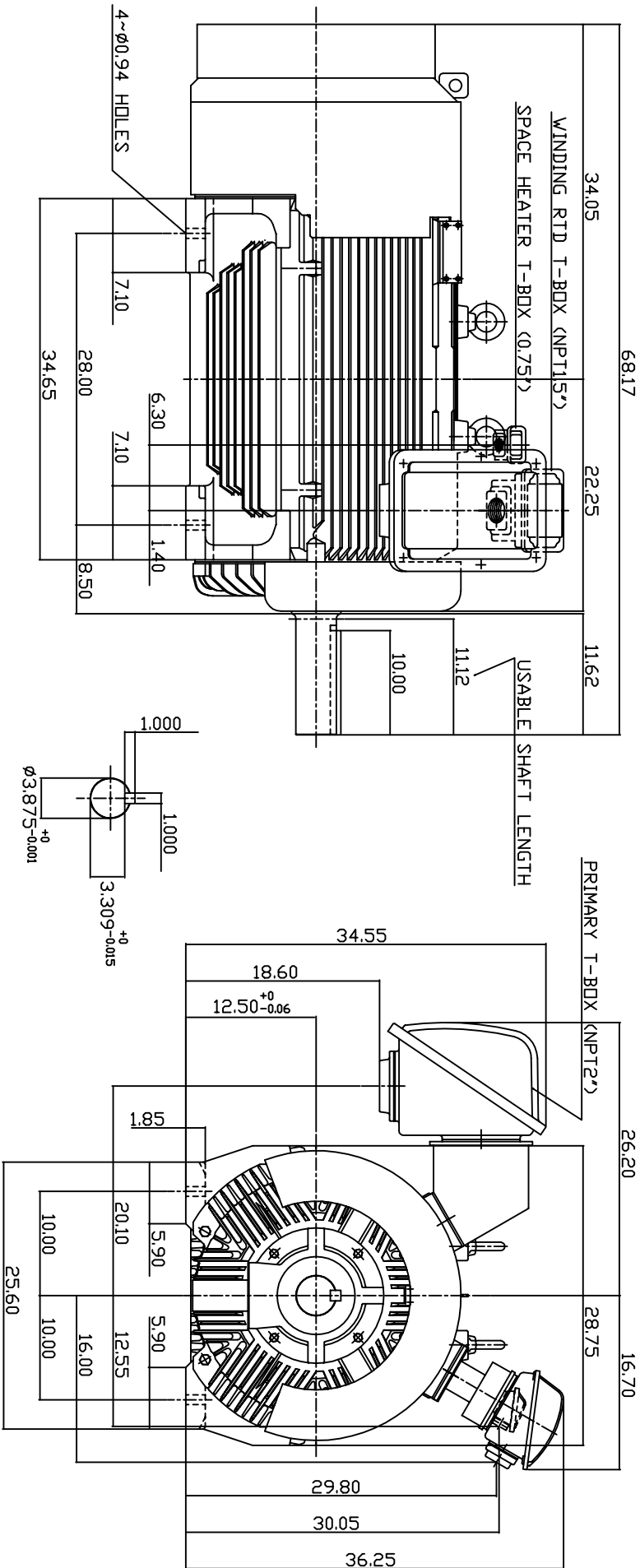


TYPE	OUTPUT		POLE	TIME RATING	VOLTAGE V	Hz	SYN SPEED R.P.M
	HP.	KW.					
AEHGTK	200	149	8	CDNT.	2300/4160	60	900

TOTALLY ENCLOSED FAN-COOLED TYPE. SQUIRREL-CAGE ROTOR



- NOTE:
1. DIMENSIONS IN INCH.
 2. FRAME NO. 5009C
 3. F CLASS INSULATION, S.F.115
 4. FOR BELT DRIVE APPLICATIONS
 5. WITH SPACE HEATER 120 VOLT SINGLE PHASE 200 WATTS
 6. WITH 100 OHM PLATINUM WINDING RTD'S 2/PHASE
 7. BEARING SIZE: DRIVE END: NU324
NON-DRIVE END: 6320
 8. MOTOR APPROX. WEIGHT: 4150 LBS

TW-56C

DWN.	W.LLIN	APR -08 -2003
CHKD.	W.LLIN	APR -08 -2003
APPD.	C.WANG	APR -08 -2003

DATE	MAY 5, 2004	OUTLINE DIMENSIONS
CATALOG NO.	KG2008R	
3-PHASE INDUCTION MOTOR		

Westinghouse
D/WG NO. 3A040T4480
REV. 00