

Product Information Packet

November 7, 2016

Data shown is for the current revision model #. Ensure your nameplate model # matches.

Model Number:	5CD164LA041A026
Catalog Number:	D686
Instruction Manual:	GEH-3967N
Connection Diagram:	36A167760CA501
Outline Drawing:	36A167943AA001

Accessory Connection Diagrams			
Bearing Thermocouple:	None	Heater:	None
RTD:	None	Thermistor:	None
Thermostat:	None	Winding Thermocouple:	None
Bearing RTD:	None		

Table of Contents	
Specification	01
Outline Drawing	02
Connection Drawing(s)	03

Marks:

MODEL NUMBER:	5CD164LA041A026	Enclosure Mtg Assem:	36A167772AD001
Outline Drawing:	36A167943AA001	Instruction Book:	GEH-3967N
Connection Diagram:	36A167760CA501	RPM:	1750/2300
Horsepower:	7.5	Armature Amps:	12.4
Armature Volts:	500	Type:	CD259AT
Wound:	SHUNT	Power Supply Code:	C
Enclosure:	TENV	Insulation Class:	F
Duty:	CONT	Ambient Max (°C):	40 C
Rating Code:	164L1330-01	Field Volts:	300/150
K(V):	2.60 Cemf volts/Radian/Sec	WK2:	3.31Lb Ft2
K(T):	1.81 Ft/Amp	Year of Manufacture:	2016
Minimum Ambient:	0 C	Max Altitude:	3300 Ft

Resistances at 25 Degrees C :

Shunt Field:	238 OHMS
Armature:	1.0536 OHMS
Commutator Field:	.3114 OHMS

Inductances:

Armature Circuit Total:	23.470 mH Saturated
Shunt Field:	184.0 Henries Unsaturated

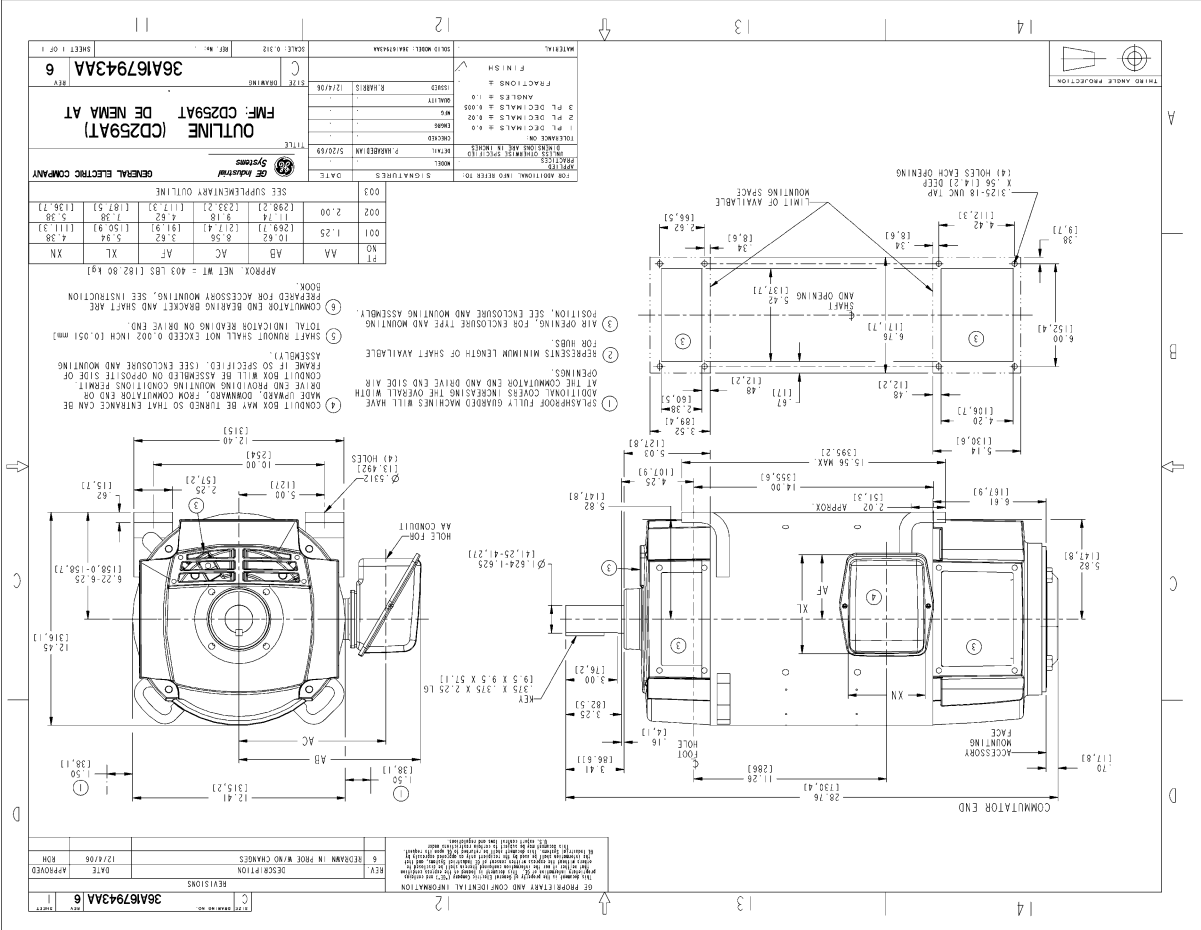
Shunt Field Data:

Shunt Field Current(1): .91 AMPS at Rated Load and 1750 RPM
 Shunt Field Current(2): .76 AMPS at Rated Load and 1933 RPM
 Shunt Field Current(3): .58 AMPS at Rated Load and 2300 RPM

Additional Machine Notes:

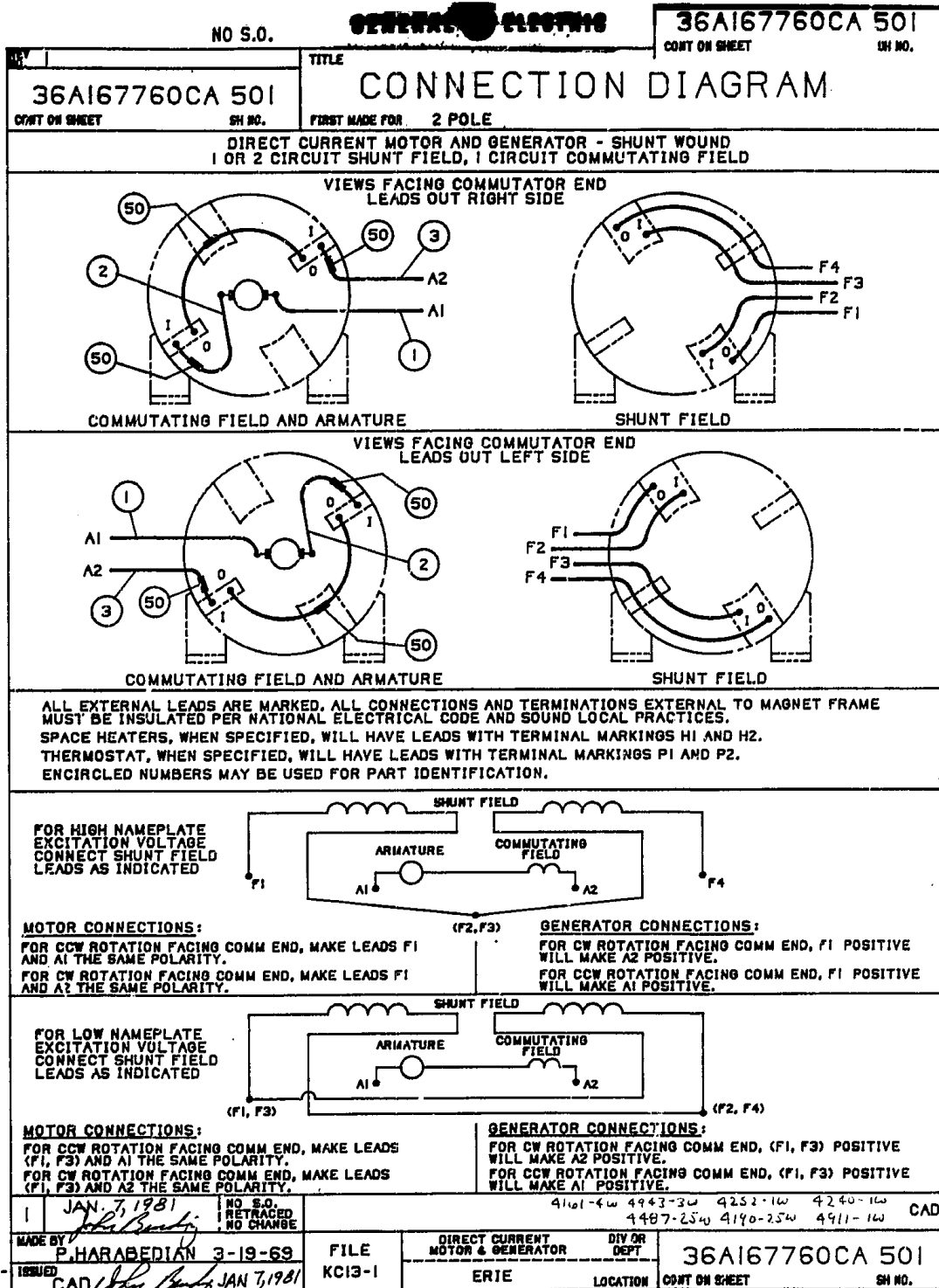
TOTALLY ENCLOSED NON VENTILATED - BALL BEARINGS
 CONDUIT BOX ON RIGHT HAND SIDE FACING COMMUTATOR END
 STANDARD SHAFT DRIVE END ONLY - WITH FEET
 WITH:
 CSA STAMP
 THERMOSTAT- NORMALLY CLOSED, AC RATING- 600V MAX-
 .5A, 250V-1.5A, OR 125V-3A, DC RATING- 30V MAX-
 1.5A. MAXIMUM CURRENT BASED ON INDUCTIVE LOADS UP
 TO AND INCLUDING NEMA NO.5 CONTACTOR.

Marks:



NAME: 23089544 OBJECT: 36A167943AA DATE: 06 DEC 06 14:00:04

Marks:



DORM 36A167760CA501R01
PLT .64 SCL