

Product Information Packet

November 8, 2016

Data shown is for the current revision model #. Ensure your nameplate model # matches.

Model Number:	5KS445LAA125B
Catalog Number:	M7656
Instruction Manual:	GEI-56128
Connection Diagram:	GEM2034E-FIG7
Outline Drawing:	239CC601AB

Accessory Connection Diagrams			
Bearing Thermocouple:	None	Heater:	None
RTD:	None	Thermistor:	None
Thermostat:	None	Winding Thermocouple:	None
Bearing RTD:	None		

Table of Contents	
Specification	01
Performance Characteristics	02
Outline Drawing	03
Connection Drawing(s)	04

Marks:

MODEL NUMBER:	5KS445LAA125B	Estimated Weight:	1830 Lbs
Outline Drawing:	239CC601AB	Time Rating:	CONT
Connection Diagram:	GEM2034E-FIG7	Enclosure:	TEFC
Instruction Book:	GEI-56128	Encl Construction:	SD
Design Code:	44BD0103A	Ambient Max(°C):	40
Type:	KS	Alt Ambient Max(°C):	--
Frame:	445TSC	Insulation Class:	F
Phases:	3	NEMA Design:	A
Poles:	2	Nominal Efficiency:	95.0 %
Output Power:	150HP 111KW	Guaranteed Efficiency:	94.1
RPM:	3580	3/4 Load Efficiency:	94.9
Voltage:	460	KVA Code:	G
Hertz:	60	Max KVAR:	39.6
Amps - FL:	170.0	Power Factor:	87.0
Service Factor:	1.15	Bearing - DE:	6314ZC3
Alt Service Factor:	--	Bearing - ODE:	6314ZC3

Enclosure is Totally Enclosed Fan-Cooled

Stamped Nameplate Notes:

INVERTER DUTY PER NEMA MG1 PART 31
 ALTERNATE RATING FOR PWM CONTROL:1.0SF 40C AMBIENT
 VAR TORQUE RANGE 0-60 HZ

Additional Information:

2P - TS EXTN
 C FACE ON DE
 700 CU IN - 3.00" NPT
 OIL RESISTANT SLEEVING ON LEADS
 F1 MOUNTING
 VIBRATION LIMIT 0.15 INCH PER SEC

Performance Characteristics

1st Winding 1st Connection

Design: 44BD0103A

Marks:

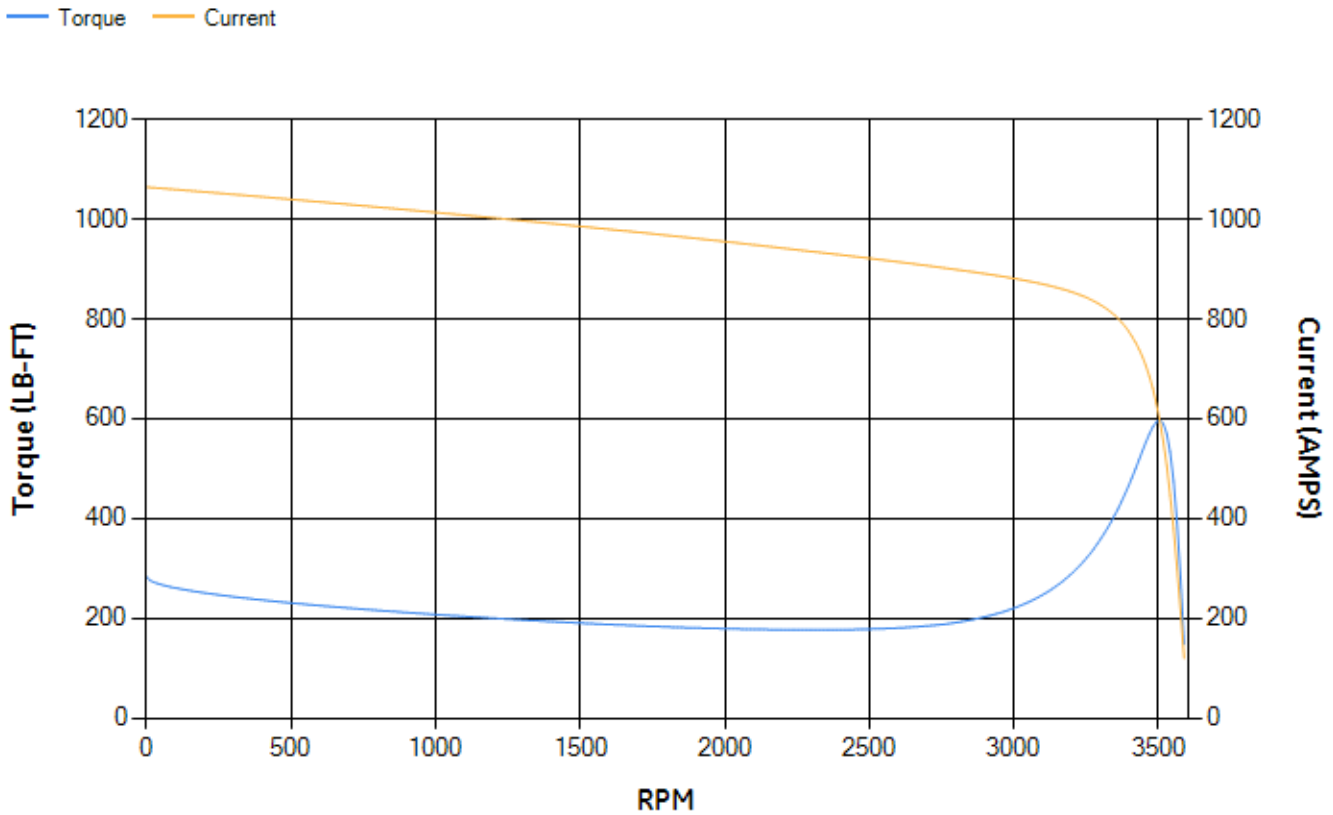
LOAD %	125.0	115.0	100.0	75.0	50.0	25.0	0.0
% EFF	94.62	94.77	95.12	94.87	94.09	90.63	0.00
% PF	88.08	87.88	87.17	84.28	76.73	56.06	5.9
AMPS	210.57	193.86	169.32	131.69	97.24	69.07	55.01

TORQ(FL)#FT	220.07	TORQ(LR)%FL	128.62	TORQ(BD)%FL	271.07
AMPS(LR)	1064.19	PF AT START	0.2		

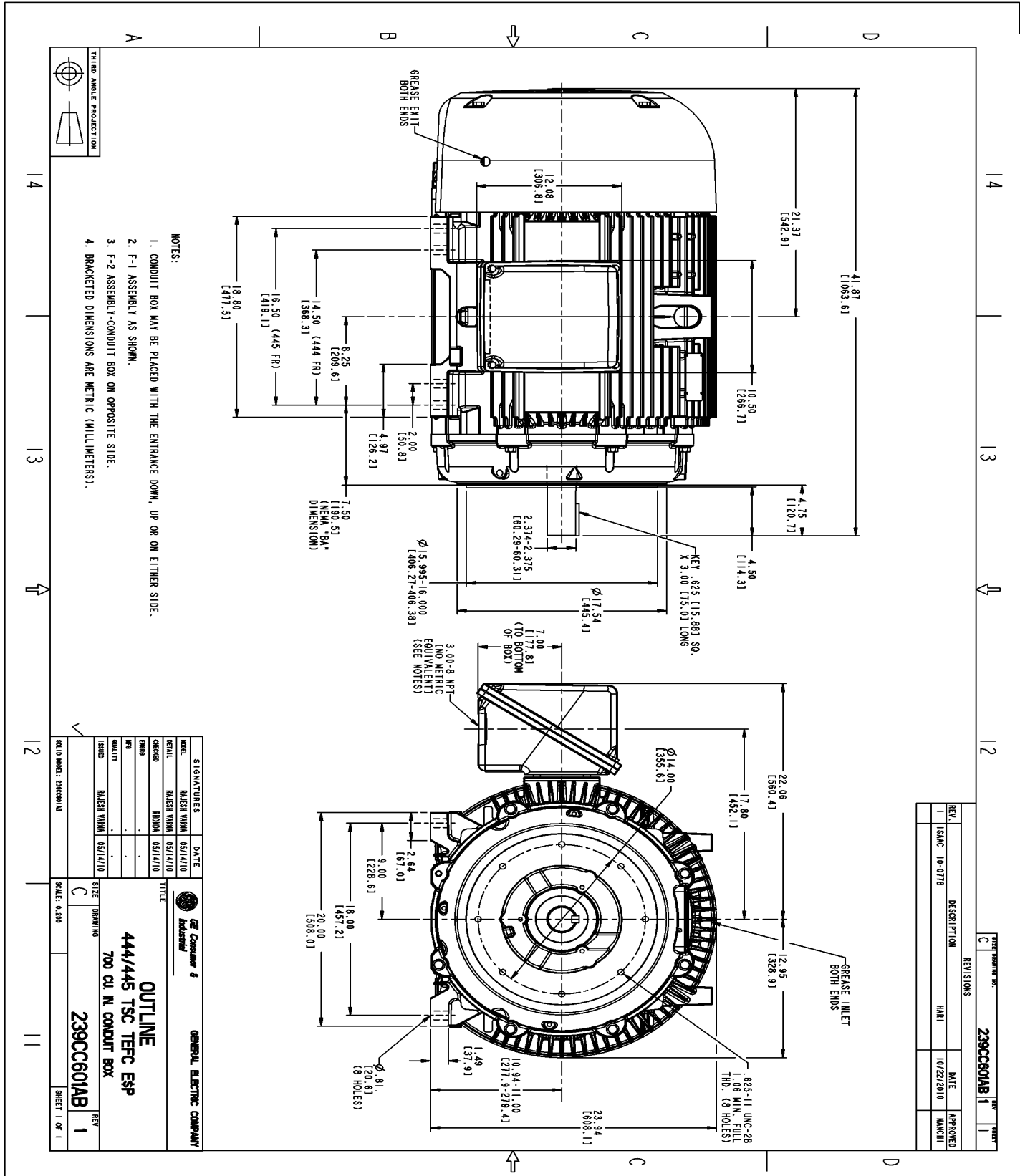
This motor is capable of two cold or one hot start with a maximum connected load inertia of 348 Lb-Ft Sq (14.65 Kg-meter Sq) at 100% voltage, where the load torque varies with the square of the speed. Acceleration time with maximum inertia and the above load type is 28 seconds. Safe stall time at 100% voltage is 72 seconds cold, 33 seconds hot. Rotor inertia is 22.71 Lb-Ft Sq (0.96 Kg-meter Sq).

Open Circuit A-C:	1.33	Short Circuit D-C:	0.034
Short Circuit A-C:	0.073	X/R Ratio:	12.655
Stator Slots:	48	Rotor Slots:	38

Speed Torque Current Curve (First Connection, First Speed)



Marks:



- NOTES:
1. CONDUIT BOX MAY BE PLACED WITH THE ENTRANCE DOWN, UP OR ON EITHER SIDE.
 2. F-1 ASSEMBLY AS SHOWN.
 3. F-2 ASSEMBLY--CONDUIT BOX ON OPPOSITE SIDE.
 4. BRACKETED DIMENSIONS ARE METRIC (MILLIMETERS).

REV.	DESCRIPTION	DATE	APPROVED
1	ISAC 10-0718	10/22/2010	MANCH

SIGNATURES	DATE	TITLE
DESIGNER	05/14/10	DESIGNER
DRAWN	05/14/10	DRAWN
CHECKED		
APPROVED		

GENERAL ELECTRIC COMPANY

OUTLINE

444/445 TSC TFC ESP

700 CU. IN. CONDUIT BOX

239CC601AB

SCALE: 0.25X

SHEET 1 OF 1

Marks:

Connection Diagram
GEM2034E-FIG7

