

# Product Information Packet

November 8, 2016

Data shown is for the current revision model #. Ensure your nameplate model # matches.

<b>Model Number:</b>	<b>5KS445SAA114D2</b>
<b>Catalog Number:</b>	<b>M8955</b>
<b>Instruction Manual:</b>	GEI-56128
<b>Connection Diagram:</b>	GEM2034E-FIG7
<b>Outline Drawing:</b>	239C6600AB

Accessory Connection Diagrams			
<b>Bearing Thermocouple:</b>	None	<b>Heater:</b>	None
<b>RTD:</b>	None	<b>Thermistor:</b>	None
<b>Thermostat:</b>	None	<b>Winding Thermocouple:</b>	None
<b>Bearing RTD:</b>	None		

## Table of Contents

Specification	01
Performance Characteristics	02
Outline Drawing	03
Connection Drawing(s)	04
Spare parts	05



**Marks:**

<b>MODEL NUMBER:</b>	<b>5KS445SAA114D2</b>	<b>Estimated Weight:</b>	1860 Lbs
<b>Outline Drawing:</b>	239C6600AB	<b>Time Rating:</b>	CONT
<b>Connection Diagram:</b>	GEM2034E-FIG7	<b>Enclosure:</b>	TEFC
<b>Instruction Book:</b>	GEI-56128	<b>Encl Construction:</b>	X\$D
<b>Design Code:</b>	44BD0131B	<b>Ambient Max(°C):</b>	40
<b>Type:</b>	KS	<b>Alt Ambient Max(°C):</b>	60
<b>Frame:</b>	445TS	<b>Insulation Class:</b>	H
<b>Phases:</b>	3	<b>NEMA Design:</b>	B
<b>Poles:</b>	2	<b>Nominal Efficiency:</b>	95.0 %
<b>Output Power:</b>	150HP 111KW	<b>Guaranteed Efficiency:</b>	94.5
<b>RPM:</b>	3580	<b>3/4 Load Efficiency:</b>	95.1
<b>Voltage:</b>	575	<b>KVA Code:</b>	G
<b>Hertz:</b>	60	<b>Max KVAR:</b>	35.1
<b>Amps - FL:</b>	134.0	<b>Power Factor:</b>	88.5
<b>Service Factor:</b>	1.15	<b>Bearing - DE:</b>	6314ZC3
<b>Alt Service Factor:</b>	1.00	<b>Bearing - ODE:</b>	6314ZC3

**Enclosure is Totally Enclosed Fan-Cooled**

**Stamped Nameplate Notes:**

STAMP NP249A5564P051 AS BELOW:  
 MODEL:5KS445SAA114D2 S/N: XXX  
 CSA CERTIFIED CSA09.2216219 FOR EX NA IIC 200 C GC  
 CL 1 ZONE2 AEX NA IIC 200C;CL 1 DIV2 GRP ABCD 200C  
 IN -40C <= AMB <= 40C, 1.0 SF ON SINE-WAVE PWR  
 SURF TEMP 230C AT 1.15SF ON SINE-WAVE PWR  
 OR 200C VT OR 230C CT OR ---C CHP PWM CONTROL  
 ALTERNATE RATING FOR PWM CONTROL 1.0SF 40C AMB  
 VT 0 - 60 HZ, CT 6-60 HZ, CHP --- HZ.

**Additional Information:**

2P - TS EXTN  
 700 CU IN - 3.00" NPT  
 OIL RESISTANT SLEEVING ON LEADS  
 F1 MOUNTING

**Performance Characteristics**

1st Winding 1st Connection

**Design: 44BD0131B**

**Marks:**

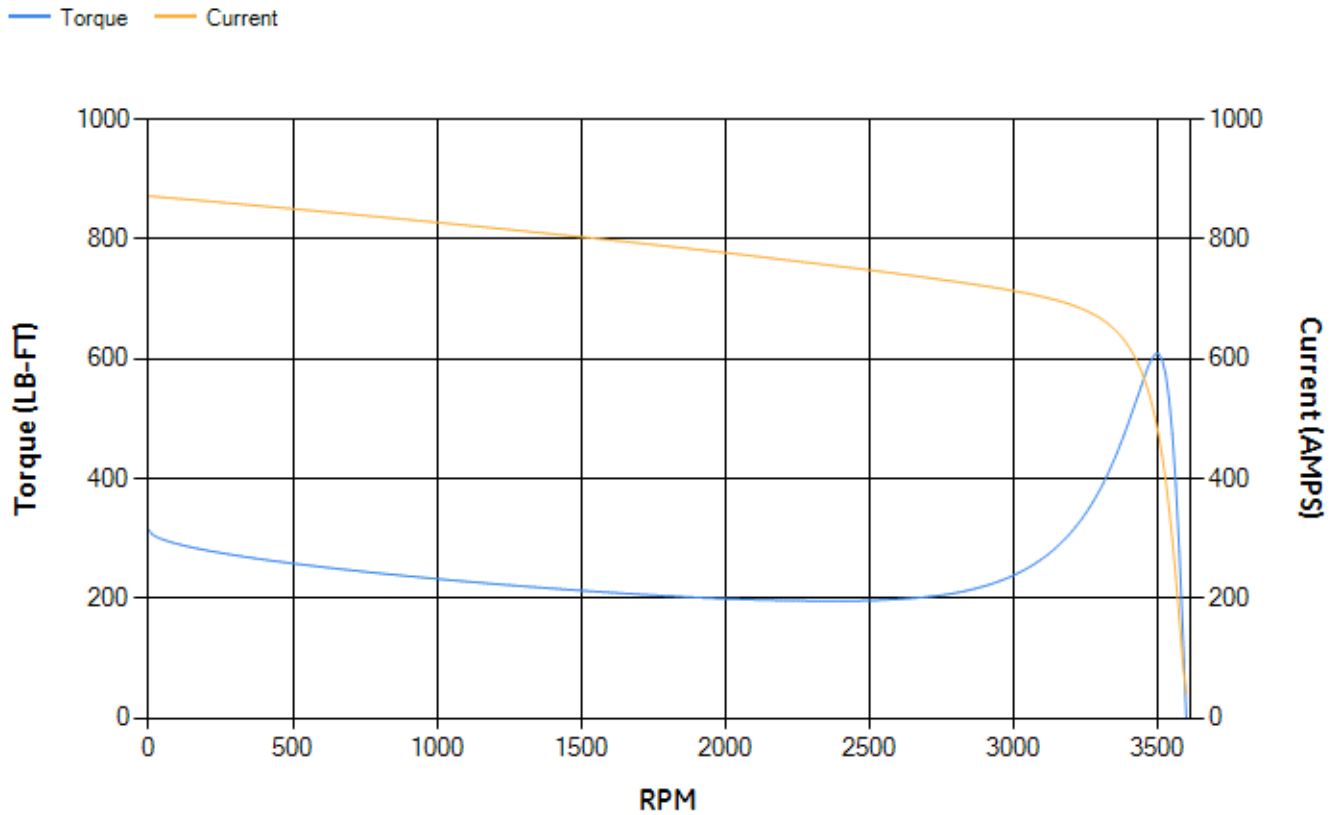
LOAD %	125.0	115.0	100.0	75.0	50.0	25.0	0.0
% EFF	94.89	95.03	95.36	95.1	94.32	90.96	0.00
% PF	89.32	89.21	88.69	86.31	79.72	60.19	6.41
AMPS	165.64	152.37	132.81	102.63	74.68	51.29	39.17

<b>TORQ(FL)#FT</b>	220.05	<b>TORQ(LR)%FL</b>	142.91	<b>TORQ(BD)%FL</b>	276.69
<b>AMPS(LR)</b>	871.94	<b>PF AT START</b>	0.2		

This motor is capable of two cold or one hot start with a maximum connected load inertia of 402 Lb-Ft Sq (16.92 Kg-meter Sq) at 100% voltage, where the load torque varies with the square of the speed. Acceleration time with maximum inertia and the above load type is 28 seconds. Safe stall time at 100% voltage is 67 seconds cold, 34 seconds hot. Rotor inertia is 24.28 Lb-Ft Sq (1.02 Kg-meter Sq).

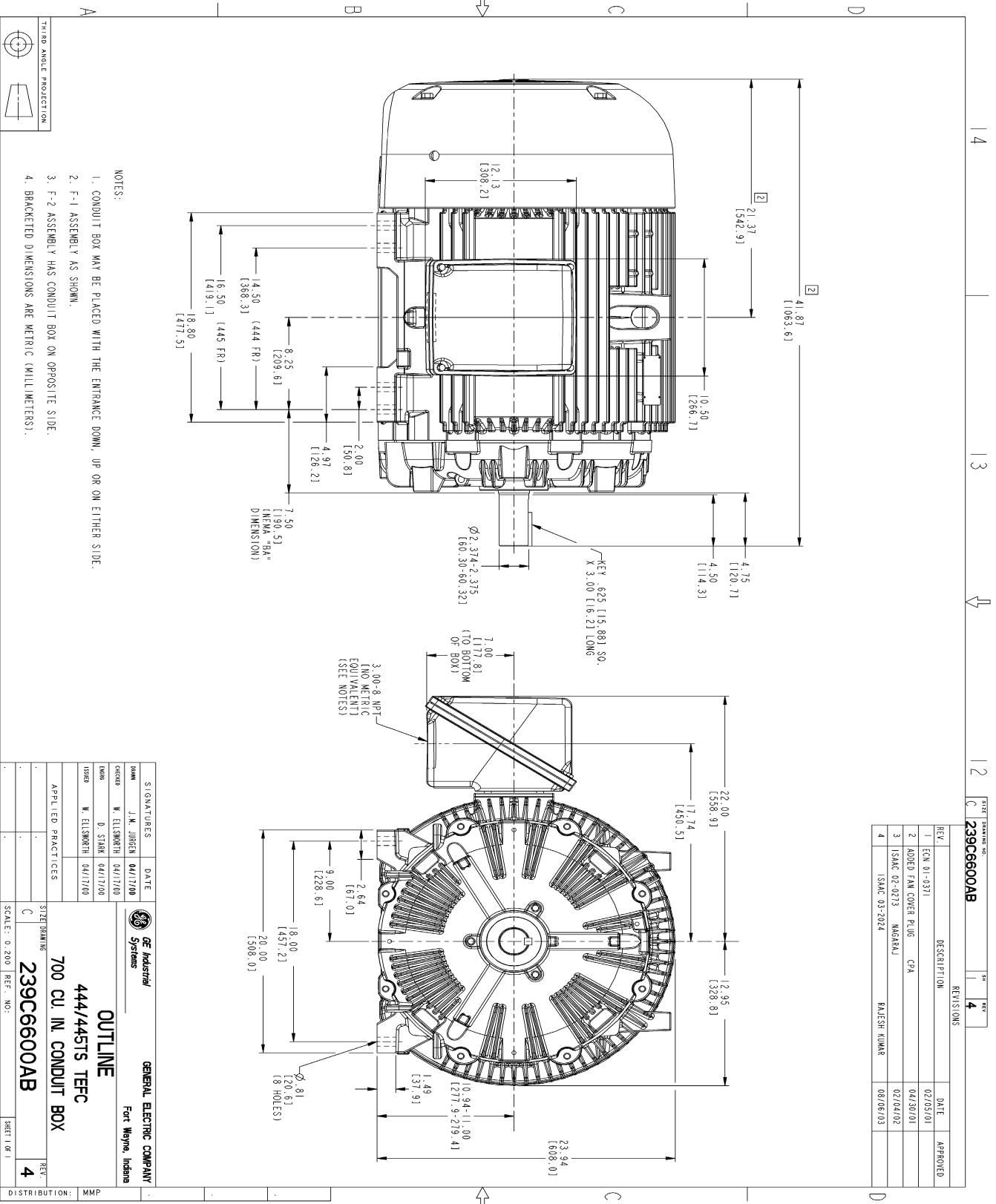
<b>Open Circuit A-C:</b>	1.501	<b>Short Circuit D-C:</b>	0.036
<b>Short Circuit A-C:</b>	0.071	<b>X/R Ratio:</b>	13.437
<b>Stator Slots:</b>	48	<b>Rotor Slots:</b>	38

**Speed Torque Current Curve (First Connection, First Speed)**



NAME: 103016807 OBJECT: 239C6600AB DATE: 08-Aug-03 11:44:55

Marks:



NOTES:

1. CONDUIT BOX MAY BE PLACED WITH THE ENTRANCE DOWN, UP OR ON EITHER SIDE.
2. F-1 ASSEMBLY AS SHOWN.
3. F-2 ASSEMBLY HAS CONDUIT BOX ON OPPOSITE SIDE.
4. BRACKETED DIMENSIONS ARE METRIC (MILLIMETERS).

REV.	DESCRIPTION	DATE	APPROVED
1	ECN 01-0371	02/05/01	
2	CODED FAN COVER PLUG - CPA	04/30/01	
3	ISAC 02-0273 MARGRAJ	02/04/02	
4	ISAC 03-2024 RAJESH KUMAR	08/06/03	

SIGNATURES	DATE
DAVE J.M. JUREN	04/17/00
CHUCK W. ELLSWORTH	04/17/00
DAVE D. STARR	04/17/00
ISRAEL W. ELLSWORTH	04/17/00

		<b>GENERAL ELECTRIC COMPANY</b> Fort Wayne, Indiana	
<b>OUTLINE</b> 444/445TS TFFC 700 CU. IN. CONDUIT BOX			
SCALE: 0.200	REF. NO.:	SIZE DRAWING NO. <b>239C6600AB</b>	SHEET OF 1 <b>4</b>

DISTRIBUTION: MMP

Marks:

**Connection Diagram**  
**GEM2034E-FIG7**



End shield Assembly		
Part Description	DE Side Part#	ODE Side Part#
End Shield	115E4354AA1	115E4354LL1
Bearing	235A2616AA01	235A2616AA01
Slinger/Inproseal	149C4399G05	149C4399G05

Fan & Fan Cover Assembly	
Part Description	Part#
Fan	159C7100AA1
Fan Cover	128D6841AA1

Conduit & Accessories Box Assembly	
Part Description	Part#
Conduit Box	118D4408AD2

Mechanical Accessories	
Part Description	Part#
Brake	
Tachometer	