

# Product Information Packet

November 9, 2016

Data shown is for the current revision model #. Ensure your nameplate model # matches.

<b>Model Number:</b>	<b>5KS326SAA208D10</b>
<b>Catalog Number:</b>	<b>M9917</b>
<b>Instruction Manual:</b>	GEI-56128
<b>Connection Diagram:</b>	GEM2034E-FIG7
<b>Outline Drawing:</b>	239C6000AE

Accessory Connection Diagrams			
<b>Bearing Thermocouple:</b>	None	<b>Heater:</b>	None
<b>RTD:</b>	None	<b>Thermistor:</b>	None
<b>Thermostat:</b>	None	<b>Winding Thermocouple:</b>	None
<b>Bearing RTD:</b>	None		

## Table of Contents

Specification	01
Performance Characteristics	02
Outline Drawing	03
Connection Drawing(s)	04
Spare parts	05



**Marks:**

<b>MODEL NUMBER:</b>	<b>5KS326SAA208D10</b>	<b>Estimated Weight:</b>	710 Lbs
<b>Outline Drawing:</b>	239C6000AE	<b>Time Rating:</b>	CONT
<b>Connection Diagram:</b>	GEM2034E-FIG7	<b>Enclosure:</b>	TEFC
<b>Instruction Book:</b>	GEI-56128	<b>Encl Construction:</b>	X\$D
<b>Design Code:</b>	32BD1183A	<b>Ambient Max(°C):</b>	40
<b>Type:</b>	KS	<b>Alt Ambient Max(°C):</b>	60
<b>Frame:</b>	326T	<b>Insulation Class:</b>	H
<b>Phases:</b>	3	<b>NEMA Design:</b>	B
<b>Poles:</b>	4	<b>Nominal Efficiency:</b>	94.5 %
<b>Output Power:</b>	50HP 37KW	<b>Guaranteed Efficiency:</b>	94.1
<b>RPM:</b>	1780	<b>3/4 Load Efficiency:</b>	94.8
<b>Voltage:</b>	460	<b>KVA Code:</b>	G
<b>Hertz:</b>	60	<b>Max KVAR:</b>	17.7
<b>Amps - FL:</b>	60.8	<b>Power Factor:</b>	81.5
<b>Service Factor:</b>	1.15	<b>Bearing - DE:</b>	6312ZC3
<b>Alt Service Factor:</b>	1.00	<b>Bearing - ODE:</b>	6312ZC3

**Enclosure is Totally Enclosed Fan-Cooled**

---

**Stamped Nameplate Notes:**

STAMP NP249A5564P051 AS BELOW:  
 MODEL:5KS326SAA208D10 S/N: XXX  
 CSA CERTIFIED CSA09.2216219 FOR EX NA IIC 200 C GC  
 CL 1 ZONE2 AEX NA IIC 200C;CL 1 DIV2 GRP ABCD 200C  
 IN -40C <= AMB <= 40C, 1.0 SF ON SINE-WAVE PWR  
 SURF TEMP 260C AT 1.15SF ON SINE-WAVE PWR  
 OR 200C VT OR 230C CT OR 200C CHP PWM CONTROL  
 ALTERNATE RATING FOR PWM CONTROL 1.0SF 40C AMB  
 VT 0 - 60 HZ, CT 10-60 HZ, CHP 60-90 HZ.

**Additional Information:**

4P - T EXTN  
 346 CU IN - 3.00" NPT  
 OIL RESISTANT SLEEVING ON LEADS  
 F1 MOUNTING

**Performance Characteristics**

1st Winding 1st Connection

**Design: 32BD1183A**

**Marks:**

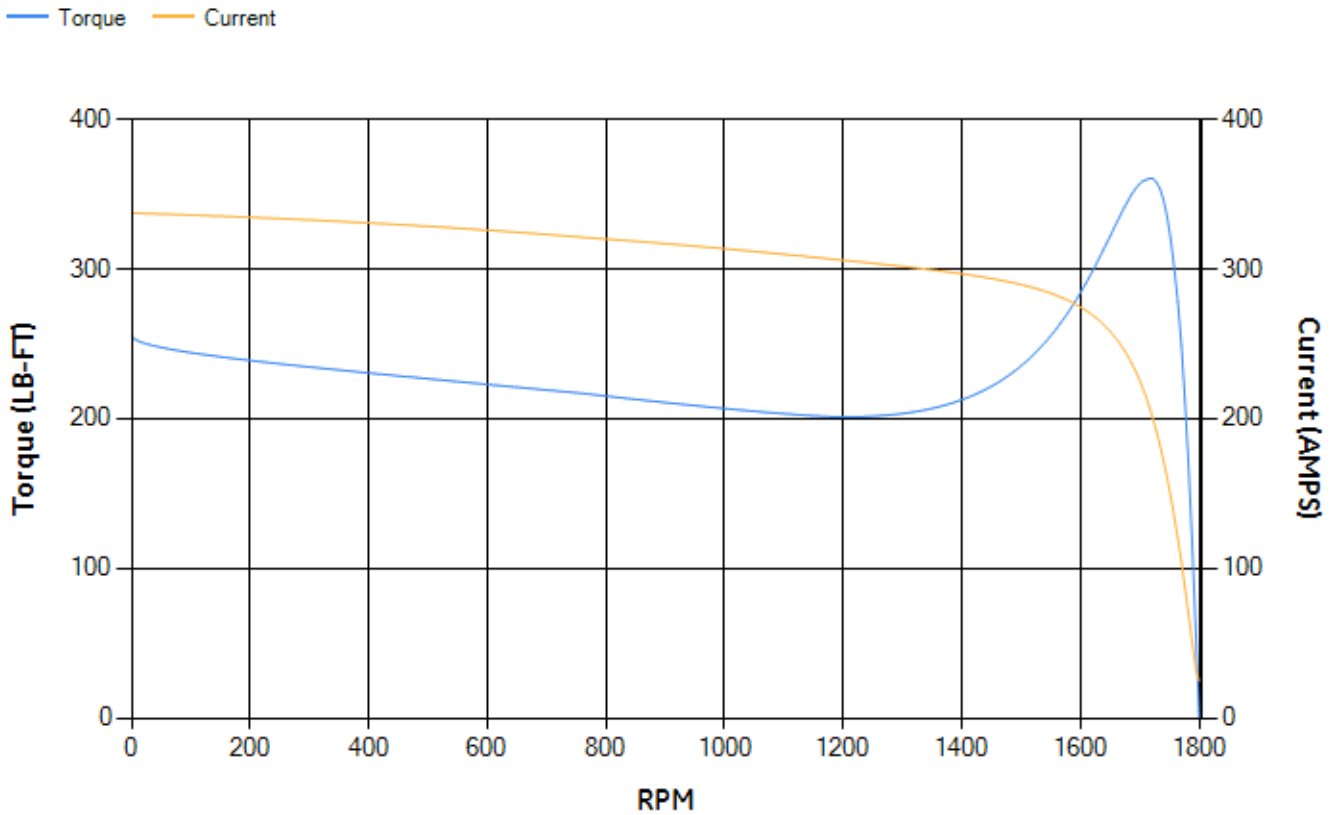
LOAD %	125.0	115.0	100.0	75.0	50.0	25.0	0.0
% EFF	93.77	94.07	94.64	94.79	94.49	91.94	0.00
% PF	83.05	82.58	81.3	76.84	66.75	44.41	3.34
AMPS	75.11	69.27	60.69	48.19	37.1	28.65	24.69

<b>TORQ(FL)#FT</b>	147.64	<b>TORQ(LR)%FL</b>	173.12	<b>TORQ(BD)%FL</b>	243.23
<b>AMPS(LR)</b>	337.37	<b>PF AT START</b>	0.34		

This motor is capable of two cold or one hot start with a maximum connected load inertia of 1057 Lb-Ft Sq (44.5 Kg-meter Sq)at 100% voltage, where the load torque varies with the square of the speed. Acceleration time with maximum inertia and the above load type is 34 seconds. Safe stall time at 100% voltage is 78 seconds cold, 40 seconds hot. Rotor inertia is 8.61 Lb-Ft Sq (0.36 Kg-meter Sq).

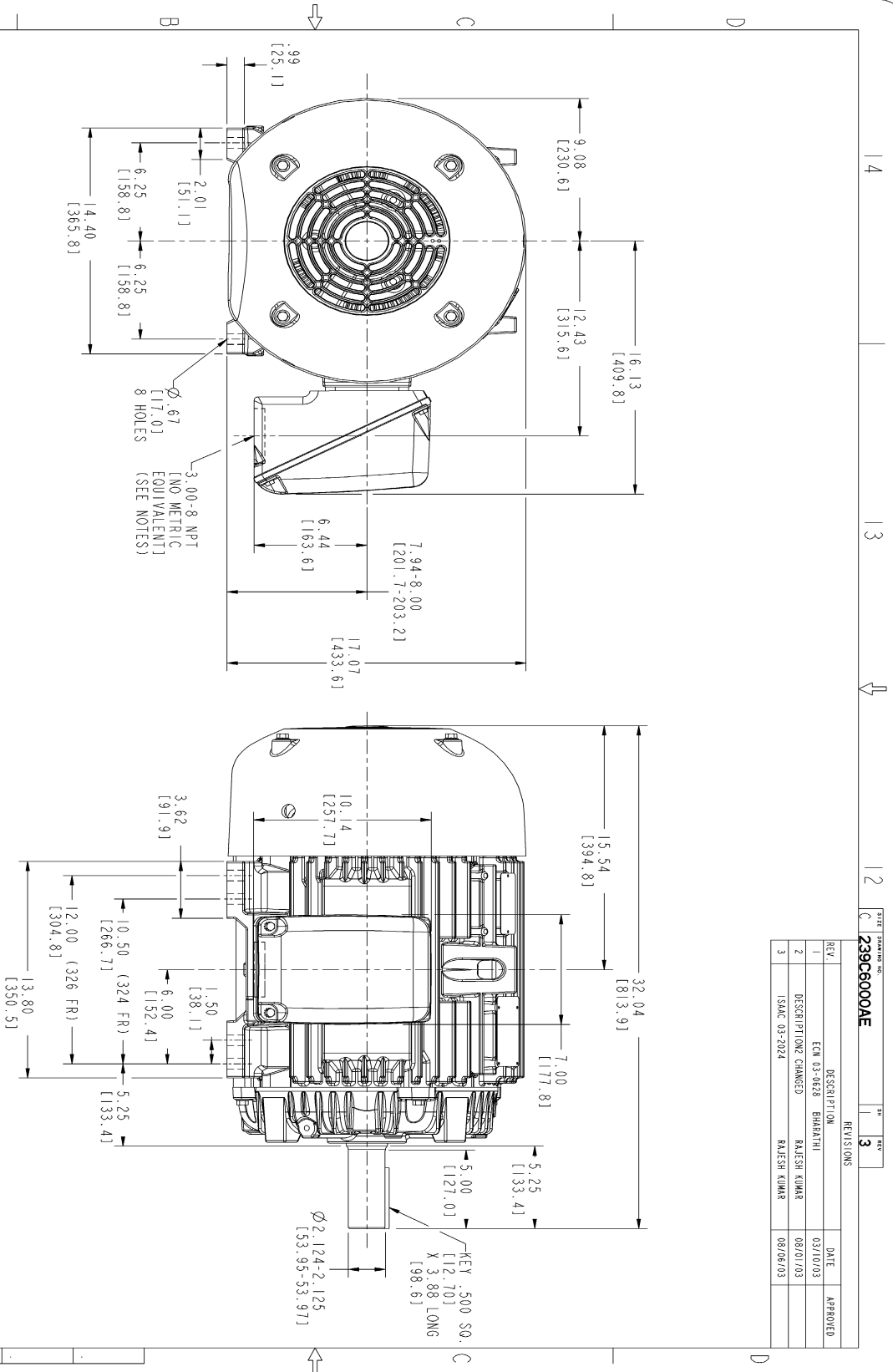
<b>Open Circuit A-C:</b>	0.511	<b>Short Circuit D-C:</b>	0.023
<b>Short Circuit A-C:</b>	0.031	<b>X/R Ratio:</b>	8.712
<b>Stator Slots:</b>	48	<b>Rotor Slots:</b>	38

**Speed Torque Current Curve (First Connection, First Speed)**



NAME: 103016807 OBJECT: 239C6000AE DATE: 07-Aug-03 23:25:11

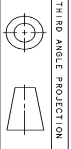
Marks:



NOTES :

1. CONDUIT BOX MAY BE PLACED WITH THE ENTRANCE DOWN, UP OR ON EITHER SIDE.
2. F-1 ASM AS SHOWN.
3. F-2 ASM HAS CONDUIT BOX ON OPPOSITE SIDE.
4. BRACKETED DIMENSIONS ARE METRIC (MILLIMETERS).

REV.		DESCRIPTION		DATE		APPROVED	
1		EQM 03-0628	BHARATHI	03/10/03			
2		DESCRIPTION CHANGED	RAJESH KUMAR	08/01/03			
3		ISSAC 03-2024	RAJESH KUMAR	08/06/03			

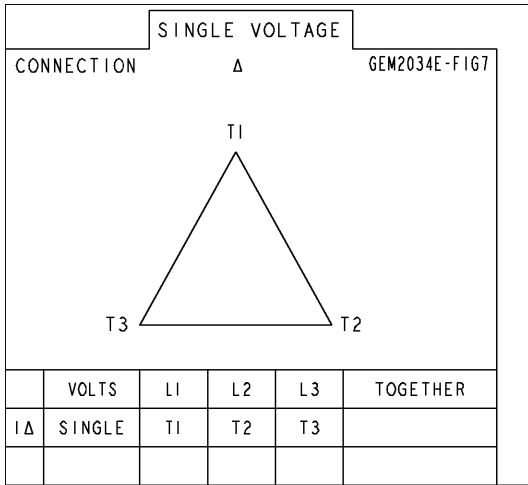


THIRD ANGLE PROJECTION

SIGNATURES	DATE	GENERAL ELECTRIC COMPANY Fort Wayne, Indiana	
DESIGNER: WABRKL	03/13/02	<b>OUTLINE</b> 346 CU. IN. CONDUIT BOX 239C6000AE	
DRAWN: MANIYANAN	03/13/02		
CHECKED: WABRKL	03/13/02	APPLIED PRACTICES SCALE: 0.250 REF. NO.:	
DATE: 03/13/02			
SHEET NO. 1		REV. 3	
DISTRIBUTION: MMP			

Marks:

**Connection Diagram**  
**GEM2034E-FIG7**



End shield Assembly		
Part Description	DE Side Part#	ODE Side Part#
End Shield	115E4200AA1	115E4200LA1
Bearing	235A2609AA01	235A2609AA01
Slinger/Inproseal	149C4399G04	149C4399G04

Fan & Fan Cover Assembly	
Part Description	Part#
Fan	159C6900G04
Fan Cover	128D6800AA1

Conduit & Accessories Box Assembly	
Part Description	Part#
Conduit Box	149C4429AA2

Mechanical Accessories	
Part Description	Part#
Brake	
Tachometer	