

Product Information Packet

November 7, 2016

Data shown is for the current revision model #. Ensure your nameplate model # matches.

| | |
|----------------------------|------------------------|
| Model Number: | 5CD174RA009A197 |
| Catalog Number: | D445 |
| Instruction Manual: | GEH-3967N |
| Connection Diagram: | 36A167760CB501 |
| Outline Drawing: | 36A167944AA001 |

| Accessory Connection Diagrams | | | |
|-------------------------------|------|------------------------------|------|
| Bearing Thermocouple: | None | Heater: | None |
| RTD: | None | Thermistor: | None |
| Thermostat: | None | Winding Thermocouple: | None |
| Bearing RTD: | None | | |

| Table of Contents | |
|-----------------------|----|
| Specification | 01 |
| Outline Drawing | 02 |
| Connection Drawing(s) | 03 |

Marks:

| | | | |
|----------------------------|----------------------------|-----------------------------|----------------|
| MODEL NUMBER: | 5CD174RA009A197 | Enclosure Mtg Assem: | 36A167770AA001 |
| Outline Drawing: | 36A167944AA001 | Instruction Book: | GEH-3967N |
| Connection Diagram: | 36A167760CB501 | RPM: | 1750/2300 |
| Horsepower: | 30 | Armature Amps: | 50.4 |
| Armature Volts: | 500 | Type: | CD288AT |
| Wound: | SHUNT | Power Supply Code: | D |
| Enclosure: | DPFG | Insulation Class: | F |
| Duty: | CONT | Ambient Max (°C): | 40 C |
| Rating Code: | 174R1250-00 | Field Volts: | 300/150 |
| K(V): | 2.47 Cemf volts/Radian/Sec | WK2: | 5.36Lb Ft2 |
| K(T): | 1.79 Ft/Amp | Year of Manufacture: | 2016 |
| Minimum Ambient: | 0 C | Max Altitude: | 3300 Ft |

Resistances at 25 Degrees C :

| | |
|--------------------------|------------|
| Shunt Field: | 104.0 OHMS |
| Armature: | .5291 OHMS |
| Commutator Field: | .1493 OHMS |

Inductances:

| | |
|--------------------------------|--------------------------|
| Armature Circuit Total: | 12.980 mH Saturated |
| Shunt Field: | 82.0 Henries Unsaturated |

Shunt Field Data:

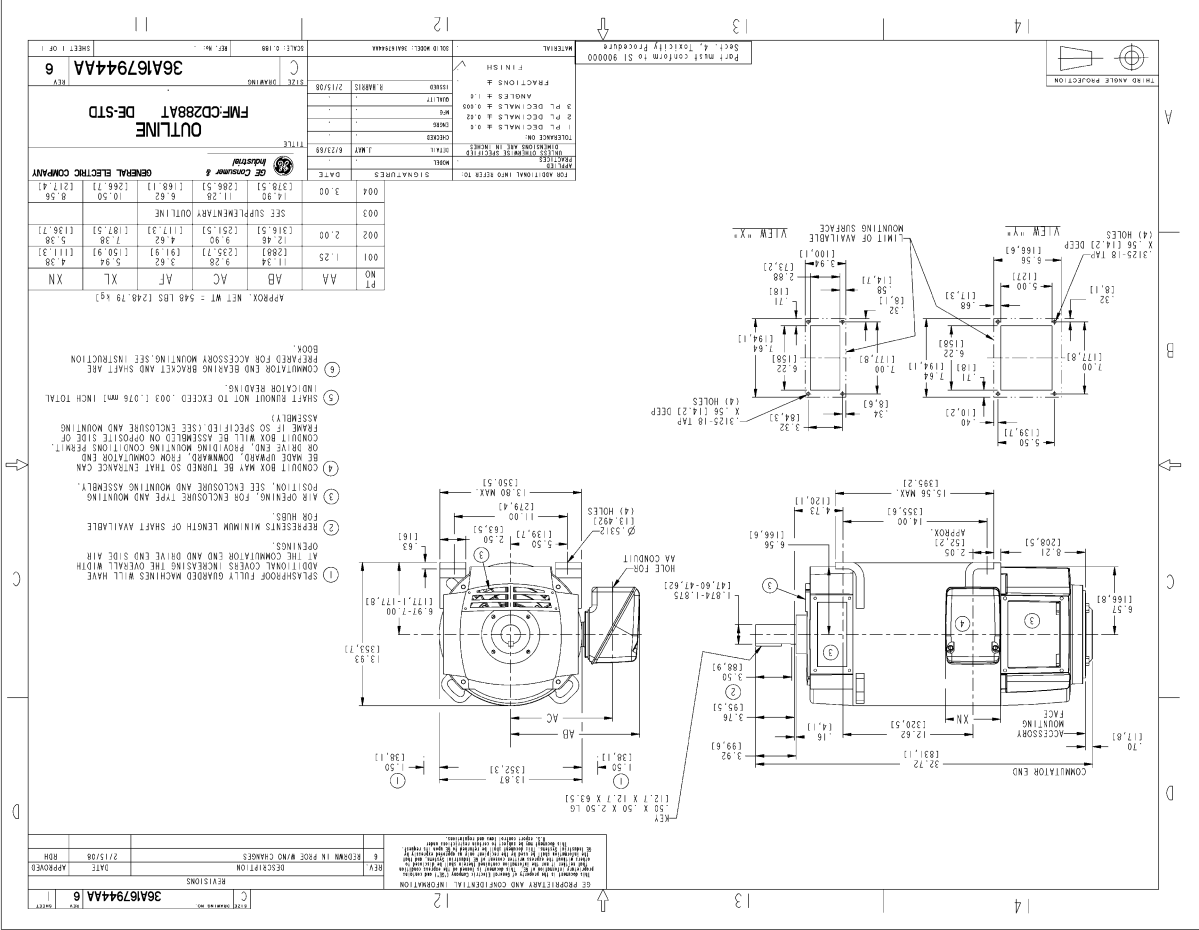
Shunt Field Current(1): 2.08 AMPS at Rated Load and 1750 RPM
 Shunt Field Current(2): 1.65 AMPS at Rated Load and 1933 RPM
 Shunt Field Current(3): 1.16 AMPS at Rated Load and 2300 RPM

Additional Machine Notes:

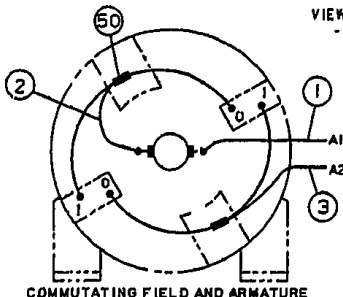
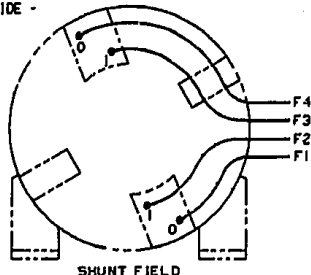
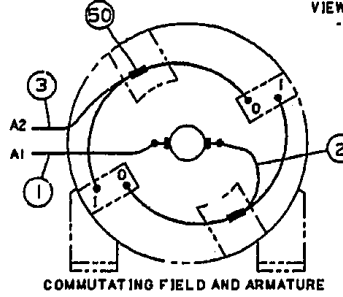
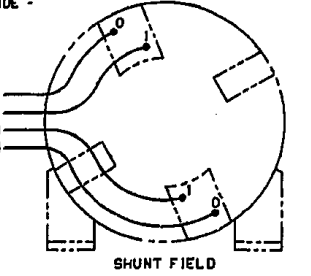
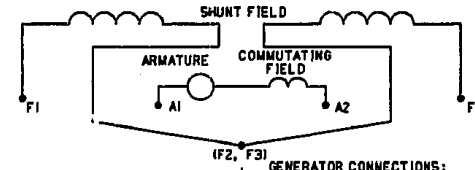
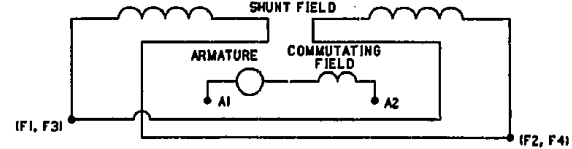
DRIPPROOF FULLY GUARDED - BALL BEARINGS
 CONDUIT BOX ON RIGHT HAND SIDE FACING COMMUTATOR END
 STANDARD SHAFT DRIVE END ONLY - WITH FEET
 WITH:
 CSA STAMP
 THERMOSTAT- NORMALLY CLOSED, AC RATING- 600V MAX-
 .5A, 250V-1.5A, OR 125V-3A, DC RATING- 30V MAX-
 1.5A. MAXIMUM CURRENT BASED ON INDUCTIVE LOADS UP
 TO AND INCLUDING NEMA NO.5 CONTACTOR.

Marks:

NAME:200800544 OBJ:CT36A16794AA DATE:15-FEB-08 10:38:18



Marks:

| | | | |
|--|-----------------------|---|--|
| NO S.O. | GENERAL ELECTRIC | 36A167760CB501 | CONT ON SHEET SH NO. |
| REV 2 | TITLE | 36A167760CB501 | |
| 36A167760CB501 | CONNECTION DIAGRAM | | |
| CONT ON SHEET | SH NO. | FIRST MADE FOR 2 POLE | |
| DIRECT CURRENT MOTOR AND GENERATOR - SHUNT WOUND 1 OR 2 CIRCUIT SHUNT FIELD - 2 CIRCUIT COMMUTATING FIELD | | | |
| VIEWS FACING COMMUTATOR END - LEADS OUT RIGHT SIDE - | | | |
|  <p>COMMUTATING FIELD AND ARMATURE</p> | |  <p>SHUNT FIELD</p> | |
| VIEWS FACING COMMUTATOR END - LEADS OUT LEFT SIDE - | | | |
|  <p>COMMUTATING FIELD AND ARMATURE</p> | |  <p>SHUNT FIELD</p> | |
| <p>ALL EXTERNAL LEADS ARE MARKED. ALL CONNECTIONS AND TERMINATIONS EXTERNAL TO MAGNET FRAME MUST BE INSULATED PER NATIONAL ELECTRICAL CODE AND SOUND LOCAL PRACTICES.</p> <p>SPACE HEATERS, WHEN SPECIFIED, WILL HAVE LEADS WITH TERMINAL MARKINGS H1 AND H2.</p> <p>THERMOSTAT, WHEN SPECIFIED, WILL HAVE LEADS WITH TERMINAL MARKINGS P1 AND P2.</p> <p>ENCIRCLED NUMBERS MAY BE USED FOR PART IDENTIFICATION.</p> | | | |
| <p>FOR HIGH NAMEPLATE EXCITATION VOLTAGE CONNECT SHUNT FIELD LEADS AS INDICATED</p> <div style="display: flex; justify-content: space-around; align-items: center;">  </div> | | | |
| <p>MOTOR CONNECTIONS: FOR CCW ROTATION FACING COMMUTATOR END, MAKE LEADS F1 AND A1 THE SAME POLARITY. FOR CW ROTATION FACING COMMUTATOR END, MAKE LEADS F1 AND A2 THE SAME POLARITY.</p> | | <p>GENERATOR CONNECTIONS: FOR CW ROTATION FACING COMMUTATOR END, F1 POSITIVE WILL MAKE A2 POSITIVE. FOR CCW ROTATION FACING COMMUTATOR END, F1 POSITIVE WILL MAKE A1 POSITIVE.</p> | |
| <p>FOR LOW NAMEPLATE EXCITATION VOLTAGE CONNECT SHUNT FIELD LEADS AS INDICATED</p> <div style="display: flex; justify-content: space-around; align-items: center;">  </div> | | | |
| <p>MOTOR CONNECTIONS: FOR CCW ROTATION FACING COMMUTATOR END, MAKE LEADS (F1,F3) & A1 THE SAME POLARITY. FOR CW ROTATION FACING COMMUTATOR END, MAKE LEADS (F1,F3) & A2 THE SAME POLARITY.</p> | | <p>GENERATOR CONNECTIONS: FOR CW ROTATION FACING COMMUTATOR END, (F1,F3) POSITIVE WILL MAKE A2 POSITIVE. FOR CCW ROTATION FACING COMMUTATOR END, (F1,F3) POSITIVE WILL MAKE A1 POSITIVE.</p> | |
| 2 | 10-11-94 R.D.BOLLA | NO S.O. RETR | QC(1) CAD |
| MADE BY P.HARABEDIAN | 3-19-69 | FILE KC13-1 | GE MOTORS ERIE |
| RE-ISSUED CAD/ R.D.BOLLA | 10-11-94 | DIV OR DEPT LOCATION | 36A167760CB501 CONT ON SHEET SH NO. |

C5X.A.36A167760CB501R02