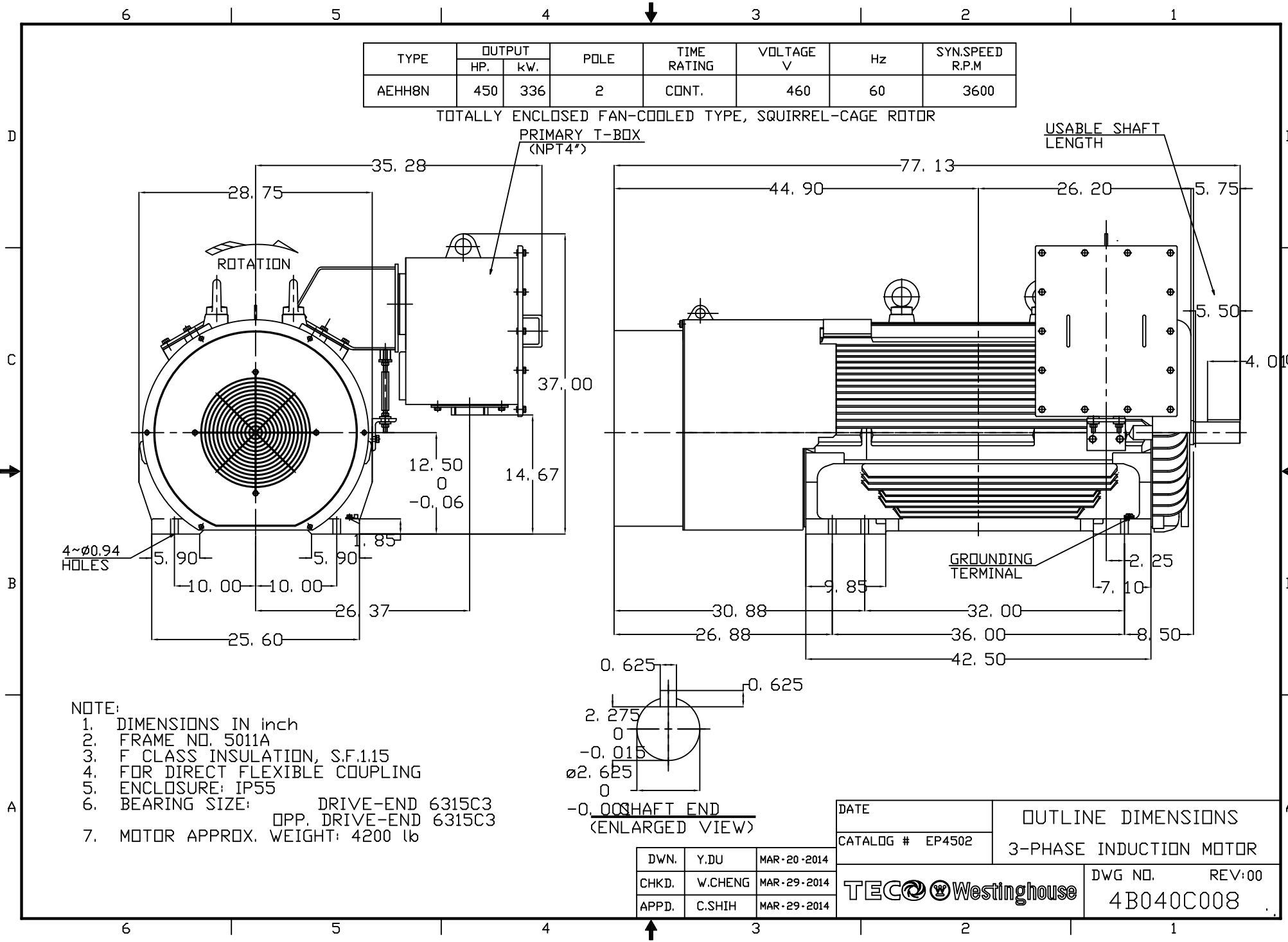


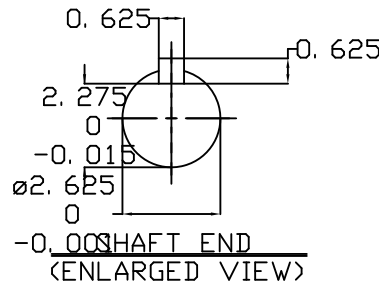
TYPE	OUTPUT		POLE	TIME RATING	VOLTAGE V	Hz	SYN.SPEED R.P.M
	HP.	KW.					
AEHH8N	450	336	2	CONT.	460	60	3600

TOTALLY ENCLOSED FAN-COOLED TYPE, SQUIRREL-CAGE ROTOR



NOTE:

1. DIMENSIONS IN inch
2. FRAME NO. 5011A
3. F CLASS INSULATION, S.F.1.15
4. FOR DIRECT FLEXIBLE COUPLING
5. ENCLOSURE: IP55
6. BEARING SIZE: DRIVE-END 6315C3
OPP. DRIVE-END 6315C3
7. MOTOR APPROX. WEIGHT: 4200 lb



DATE	OUTLINE DIMENSIONS	
CATALOG # EP4502	3-PHASE INDUCTION MOTOR	
DWN. Y.DU MAR-20-2014	TEC Westinghouse	DWG NO. REV:00
CHKD. W.CHENG MAR-29-2014		4B040C008
APPD. C.SHIH MAR-29-2014		