

Product Information Packet

November 9, 2016

Data shown is for the current revision model #. Ensure your nameplate model # matches.

Model Number:	5KS145STE222A
Catalog Number:	M7739
Instruction Manual:	GEI-M1031
Connection Diagram:	GEM2034E-FIG203
Outline Drawing:	358B6275AB

Accessory Connection Diagrams			
Bearing Thermocouple:	None	Heater:	None
RTD:	None	Thermistor:	None
Thermostat:	None	Winding Thermocouple:	None
Bearing RTD:	None		

Table of Contents	
Specification	01
Performance Characteristics	02
Outline Drawing	03
Connection Drawing(s)	04



Marks:

MODEL NUMBER:	5KS145STE222A	Estimated Weight:	62 Lbs
Outline Drawing:	358B6275AB	Time Rating:	CONT
Connection Diagram:	GEM2034E-FIG203	Enclosure:	TEFC
Instruction Book:	GEI-M1031	Encl Construction:	SD
Design Code:	14AD1012A	Ambient Max(°C):	40
Type:	KS	Alt Ambient Max(°C):	--
Frame:	145TC	Insulation Class:	F
Phases:	3	NEMA Design:	B
Poles:	4	Nominal Efficiency:	86.5 %
Output Power:	1.5HP 1.1KW	Guaranteed Efficiency:	84.0
RPM:	1745	3/4 Load Efficiency:	88.5
Voltage:	230/460	KVA Code:	M
Hertz:	60	Max KVAR:	0.8
Amps - FL:	4.2/2.1	Power Factor:	77
Service Factor:	1.15	Bearing - DE:	6205ZZC3
Alt Service Factor:	--	Bearing - ODE:	6205ZZC3

Enclosure is Totally Enclosed Fan-Cooled

Stamped Nameplate Notes:

USABLE AT 200V @ 1.5 HP, 4.5 AMPS @ 1.0 SF

LRA: 33.4/16.7

50HZ DATA: 1.0 HP, 200/400V, 3.8/1.9 AMPS @ 1.15 SF

50HZ DATA: 1.5HP, 200/400V, 4.8/2.4 AMPS @ 1.00 SF

GREASE TYPE: SHELL ALVANIA R3 LITHIUM GREASE

Additional Information:

CONDUIT BOX MATERIAL: CAST IRON

SUITABLE FOR USE IN CLASS I DIVISION 2 LOCATIONS

CLASS I DIVISION 2 GROUPS A,B,C,D T3C

CLASS I ZONE 2 IIC T3C



Performance Characteristics

1st Winding 1st Connection

Design: 14AD1012A

Marks:

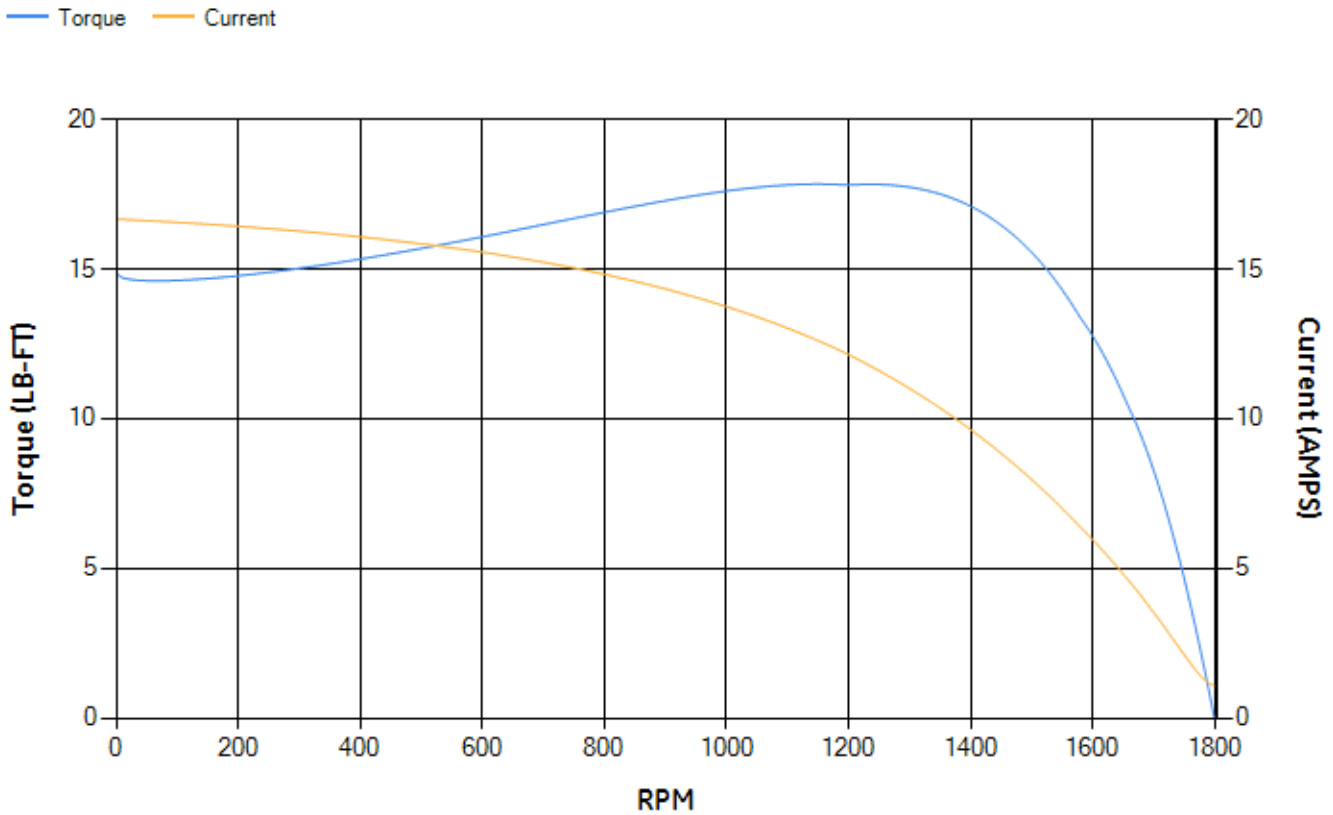
LOAD %	125.0	115.0	100.0	75.0	50.0	25.0	0.0
% EFF	87.41	87.84	88.52	88.48	87.09	80.6	0.00
% PF	80.97	79.64	76.97	69.86	57.41	36.61	6.85
AMPS	2.48	2.31	2.06	1.7	1.4	1.19	1.09

TORQ(FL)#FT	4.52	TORQ(LR)%FL	329.44	TORQ(BD)%FL	388.6
AMPS(LR)	16.67	PF AT START	0.55		

This motor is capable of two cold or one hot start with a maximum connected load inertia of 78 Lb-Ft Sq (3.28 Kg-meter Sq) at 100% voltage, where the load torque varies with the square of the speed. Acceleration time with maximum inertia and the above load type is 32 seconds. Safe stall time at 100% voltage is 75 seconds cold, 58 seconds hot. Rotor inertia is 0.11 Lb-Ft Sq (0 Kg-meter Sq).

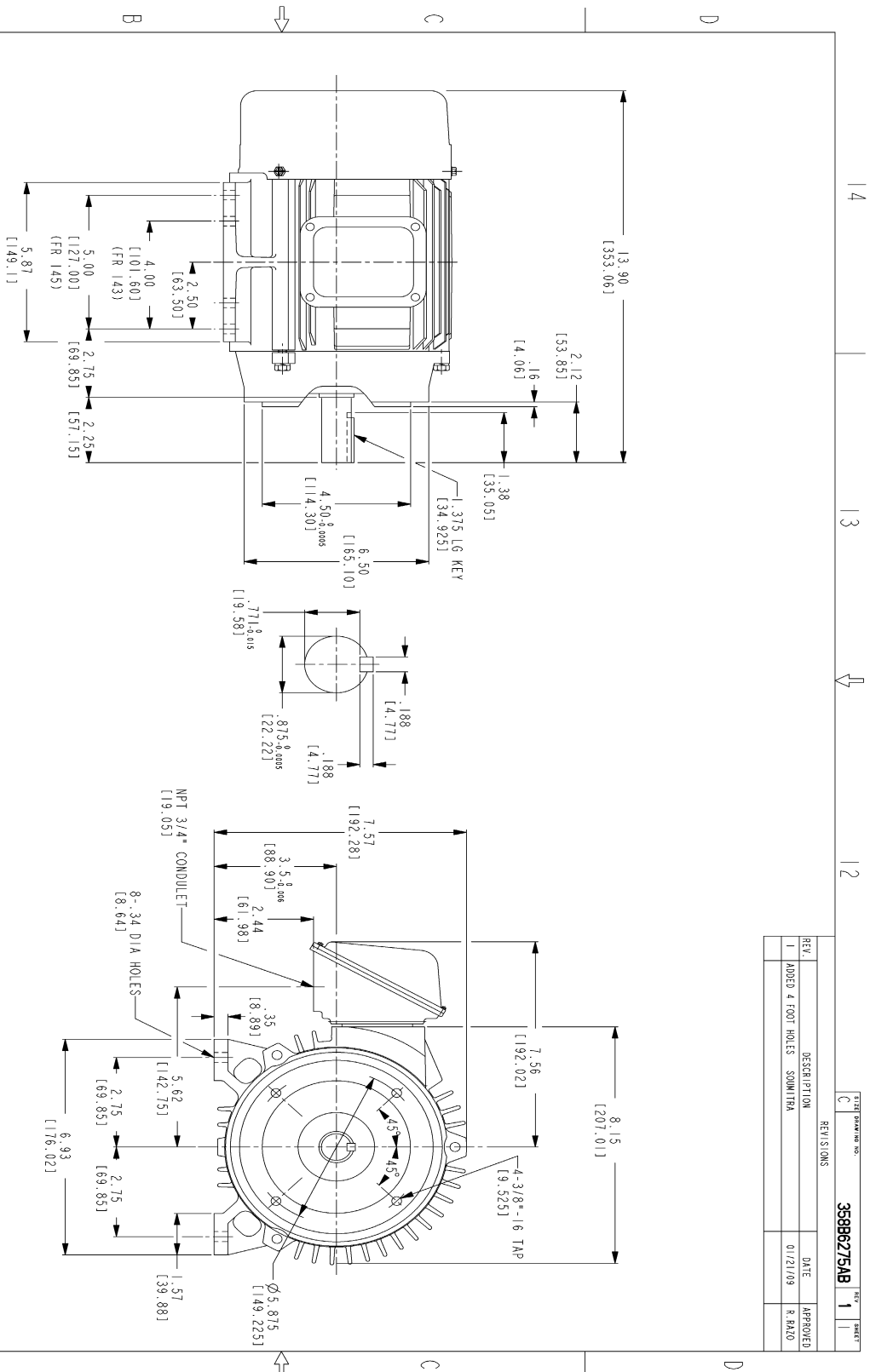
Open Circuit A-C:	0.144	Short Circuit D-C:	0.007
Short Circuit A-C:	0.007	X/R Ratio:	2.637
Stator Slots:	36	Rotor Slots:	28

Speed Torque Current Curve (First Connection, First Speed)



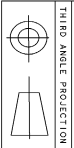
NAME:501452442 OBJECT:358B6275AB DATE:22-Jan-09 11:30:49

Marks:



NOTES:

1. DIMENSIONS ARE IN INCHES.
2. F-1 ASM AS SHOWN.
3. F-2 ASM - HAS CONDUIT BOX ON OPPOSITE SIDE.
4. BRACKETED DIMENSIONS ARE METRIC (MILLIMETERS)
5. ICA11, IP94, IMB34 APPLY.



Part must conform to SI 900000 Sect. 4, Toxicity Procedure

REV.	DESCRIPTION	DATE	APPROVED
1	ADDED 4 FOOT HOLES	01/21/09	R. PALO

FOR ADDITIONAL INFO REFER TO:	SIGNATURES	DATE
REFLECTED DIMENSIONS SPECIFIED UNLESS OTHERWISE SPECIFIED DIMENSIONS ARE IN INCHES	DESIGNED BY: SOMNITRA	12/18/07
TOLERANCE ON:	DRAWN BY: SANKU	12/18/07
1 PL DECIMALS ±	CHECKED BY: R. KOHLE	12/18/07
2 PL DECIMALS ±	ISSUED BY: SOMNITRA	12/18/07
3 PL DECIMALS ±		
ANGLES ±		
FRACTIONS ±		
FINISH		

GE Consumer & Industrial GENERAL ELECTRIC COMPANY

OUTLINE

FTD - K3TC/H3TC TERC CE MARK

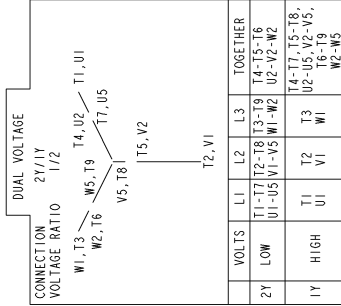
471 CU IN CONDUIT BOX

358B6275AB REV 1

SCALE: C SIZE DRAWING SHEET 1 OF 1

Marks:

Connection Diagram
GEM2034E-FIG203



NAME: 500903578 OBJECT: GEM2034E-FIG203 DATE: 03-Nov-06 13:53:10