

# Product Information Packet

November 7, 2016

Data shown is for the current revision model #. Ensure your nameplate model # matches.

<b>Model Number:</b>	<b>5CD194XA002A073</b>
<b>Catalog Number:</b>	<b>D654</b>
<b>Instruction Manual:</b>	GEH-3967N
<b>Connection Diagram:</b>	36A167900CB501
<b>Outline Drawing:</b>	36A167946AA001

Accessory Connection Diagrams			
<b>Bearing Thermocouple:</b>	None	<b>Heater:</b>	None
<b>RTD:</b>	None	<b>Thermistor:</b>	None
<b>Thermostat:</b>	None	<b>Winding Thermocouple:</b>	None
<b>Bearing RTD:</b>	None		

Table of Contents	
Specification	01
Outline Drawing	02
Connection Drawing(s)	03



**Marks:**

<b>MODEL NUMBER:</b>	<b>5CD194XA002A073</b>	<b>Enclosure Mtg Assem:</b>	36A167775AC001
<b>Outline Drawing:</b>	36A167946AA001	<b>Instruction Book:</b>	GEH-3967N
<b>Connection Diagram:</b>	36A167900CB501	<b>RPM:</b>	1150/2000
<b>Horsepower:</b>	60	<b>Armature Amps:</b>	97
<b>Armature Volts:</b>	500	<b>Type:</b>	CD368AT
<b>Wound:</b>	SHUNT	<b>Power Supply Code:</b>	C
<b>Enclosure:</b>	DPFG-BV	<b>Insulation Class:</b>	F
<b>Duty:</b>	CONT	<b>Ambient Max (°C):</b>	40 C
<b>Rating Code:</b>	194X1350-13	<b>Field Volts:</b>	300/150
<b>K(V):</b>	3.93 Cemf volts/Radian/Sec	<b>WK2:</b>	22.20Lb Ft2
<b>K(T):</b>	2.82 Ft/Amp	<b>Year of Manufacture:</b>	2016
<b>Minimum Ambient:</b>	0 C	<b>Max Altitude:</b>	3300 Ft

**Resistances at 25 Degrees C :**

<b>Shunt Field:</b>	57 OHMS
<b>Armature:</b>	.1558 OHMS
<b>Commutator Field:</b>	.0442 OHMS

**Inductances:**

<b>Armature Circuit Total:</b>	4.740 mH Saturated
<b>Shunt Field:</b>	48.0 Henries Unsaturated

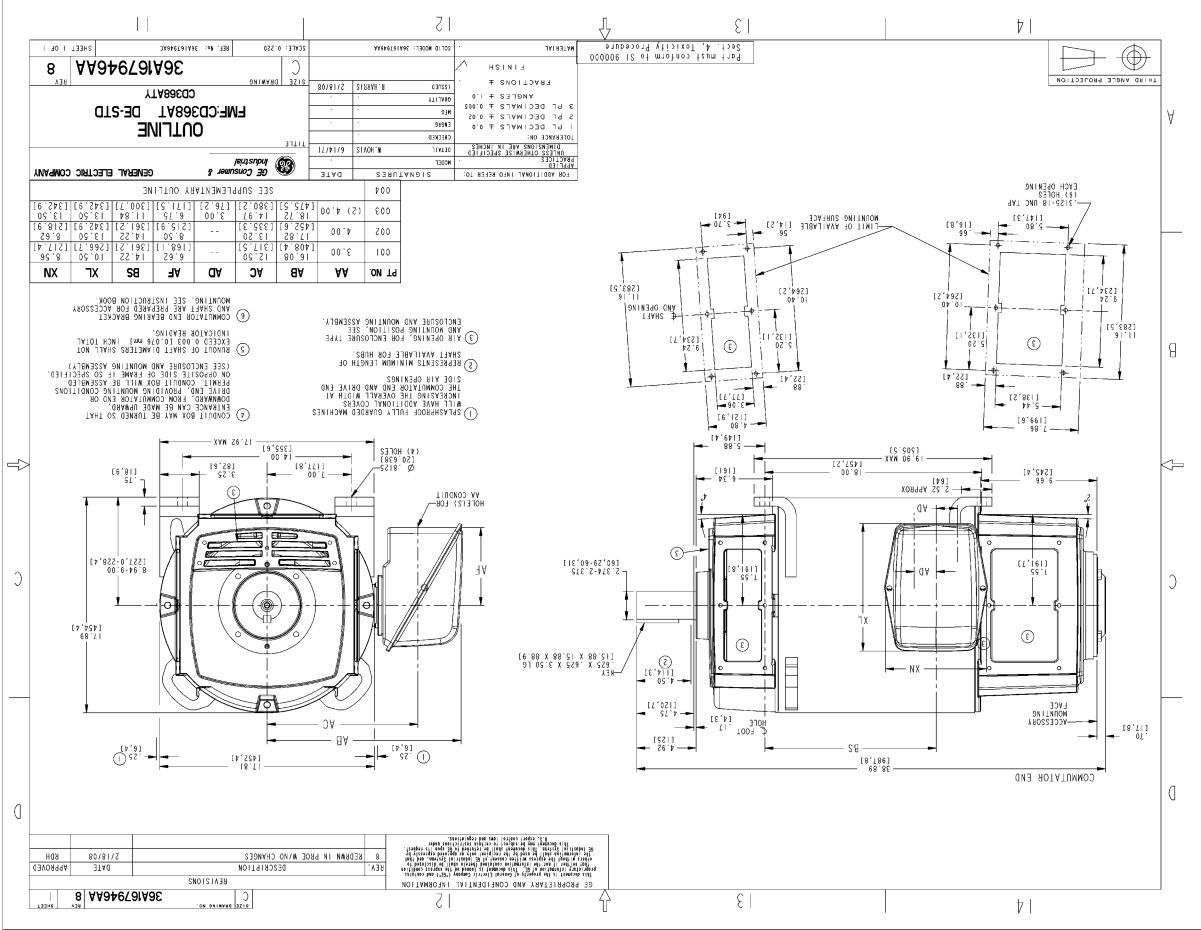
**Shunt Field Data:**

Shunt Field Current(1): 4 AMPS at Rated Load and 1150 RPM  
 Shunt Field Current(2): 2.83 AMPS at Rated Load and 1433 RPM  
 Shunt Field Current(3): 1.78 AMPS at Rated Load and 2000 RPM

**Additional Machine Notes:**

DRIPPROOF FULLY GUARDED, BLOWER VENTILATED - BALL BEARINGS  
 CONDUIT BOX ON RIGHT HAND SIDE FACING COMMUTATOR END  
 STANDARD SHAFT DRIVE END ONLY - WITH FEET  
 WITH:  
 CSA STAMP  
 THERMOSTAT- NORMALLY CLOSED, AC RATING- 600V MAX-  
 .5A, 250V-1.5A, OR 125V-3A- DC RATING- 30V MAX-  
 1.5A. MAXIMUM CURRENT BASED ON INDUCTIVE LOADS UP  
 TO AND INCLUDING NEMA NO. 5 CONTACTOR.

Marks:



NAME: 20800954 OBJ: C:\36A16794AA DATE: 2/19/08 16:11:00

Marks:

NO S.O.	<b>GENERAL ELECTRIC</b>	36A167900CB501 CONT ON SHEET
36A167900CB501 CONT ON SHEET	TITLE <b>CONNECTION DIAGRAM</b>	SN NO.
SR NO.	FIRST MADE FOR	4 POLE - 360AT (WP)
<b>DIRECT CURRENT MOTOR AND GENERATOR - SHUNT WOUND 1 OR 2 CIRCUIT SHUNT FIELD - 2 CIRCUIT COMMUTATING FIELD</b>		
<p>IEWS FACING COMMUTATOR END - LEADS OUT RIGHT SIDE -</p> <p>COMMUTATING FIELD AND ARMATURE      SHUNT FIELD</p>		
<p>IEWS FACING COMMUTATOR END - LEADS OUT LEFT SIDE -</p> <p>COMMUTATING FIELD AND ARMATURE      SHUNT FIELD</p>		
<p>ALL EXTERNAL LEADS ARE MARKED. ALL CONNECTIONS AND TERMINATIONS EXTERNAL TO MAGNET FRAME MUST BE INSULATED PER NATIONAL ELECTRICAL CODE AND SOUND LOCAL PRACTICES.</p> <p>SPACE HEATERS, WHEN SPECIFIED, WILL HAVE LEADS WITH TERMINAL MARKINGS H1 AND H2.</p> <p>THERMOSTAT, WHEN SPECIFIED, WILL HAVE LEADS WITH TERMINAL MARKINGS T1 AND T2.</p> <p>ENCIRCLED NUMBERS MAY BE USED FOR PART IDENTIFICATION.</p>		
<p>FOR HIGH NAMEPLATE EXCITATION VOLTAGE CONNECT SHUNT FIELD LEADS AS INDICATED</p> <p style="text-align: center;">(F2, F3)</p>		
<p><b>MOTOR CONNECTIONS:</b> FOR CCW ROTATION FACING COMMUTATOR END, MAKE LEADS F1 AND A1 THE SAME POLARITY. FOR CW ROTATION FACING COMMUTATOR END, MAKE LEADS F1 AND A2 THE SAME POLARITY.</p> <p><b>GENERATOR CONNECTIONS:</b> FOR CW ROTATION FACING COMMUTATOR END, F1 POSITIVE WILL MAKE A2 POSITIVE. FOR CCW ROTATION FACING COMMUTATOR END, F1 POSITIVE WILL MAKE A1 POSITIVE.</p>		
<p>FOR LOW NAMEPLATE EXCITATION VOLTAGE CONNECT SHUNT FIELD LEADS AS INDICATED</p> <p style="text-align: center;">(F1, F3)      (F2, F4)</p>		
<p><b>MOTOR CONNECTIONS:</b> FOR CCW ROTATION FACING COMMUTATOR END, MAKE LEADS (F1,F3) &amp; A1 THE SAME POLARITY. FOR CW ROTATION FACING COMMUTATOR END, MAKE LEADS (F1,F3) &amp; A2 THE SAME POLARITY.</p> <p><b>GENERATOR CONNECTIONS:</b> FOR CW ROTATION FACING COMMUTATOR END, (F1,F3) POSITIVE WILL MAKE A2 POSITIVE. FOR CCW ROTATION FACING COMMUTATOR END, (F1,F3) POSITIVE WILL MAKE A1 POSITIVE.</p>		
I R.D.BOLLA	NO S.O. RETR	QC (1) CAD
MADE BY W.C.HOVIS FEB.15.1972	FILE KC13-1	GE MOTORS      DIV OR DEPT ERIE      LOCATION
RE-ISSUED CAD/ R.D.BOLLA 10-7-94	36A167900CB501 CONT ON SHEET      SN NO.	

DC2-28112-15-671