

# Product Information Packet

November 9, 2016

Data shown is for the current revision model #. Ensure your nameplate model # matches.

<b>Model Number:</b>	<b>5KS326STE105A</b>
<b>Catalog Number:</b>	<b>M7714</b>
<b>Instruction Manual:</b>	GEI-M1031
<b>Connection Diagram:</b>	GEM2034E-FIG210
<b>Outline Drawing:</b>	358B6274AC

## Accessory Connection Diagrams

<b>Bearing Thermocouple:</b>	None	<b>Heater:</b>	None
<b>RTD:</b>	None	<b>Thermistor:</b>	None
<b>Thermostat:</b>	None	<b>Winding Thermocouple:</b>	None
<b>Bearing RTD:</b>	None		

## Table of Contents

Specification	01
Performance Characteristics	02
Outline Drawing	03
Connection Drawing(s)	04



**Marks:**

<b>MODEL NUMBER:</b>	<b>5KS326STE105A</b>	<b>Estimated Weight:</b>	780 Lbs
<b>Outline Drawing:</b>	358B6274AC	<b>Time Rating:</b>	CONT
<b>Connection Diagram:</b>	GEM2034E-FIG210	<b>Enclosure:</b>	TEFC
<b>Instruction Book:</b>	GEI-M1031	<b>Encl Construction:</b>	SD
<b>Design Code:</b>	32AD0013A	<b>Ambient Max(°C):</b>	40
<b>Type:</b>	KS	<b>Alt Ambient Max(°C):</b>	--
<b>Frame:</b>	326T	<b>Insulation Class:</b>	F
<b>Phases:</b>	3	<b>NEMA Design:</b>	A
<b>Poles:</b>	2	<b>Nominal Efficiency:</b>	93 %
<b>Output Power:</b>	50HP 37KW	<b>Guaranteed Efficiency:</b>	91.7
<b>RPM:</b>	3545	<b>3/4 Load Efficiency:</b>	93.4
<b>Voltage:</b>	230/460	<b>KVA Code:</b>	G
<b>Hertz:</b>	60	<b>Max KVAR:</b>	7.4
<b>Amps - FL:</b>	110/55	<b>Power Factor:</b>	91.5
<b>Service Factor:</b>	1.15	<b>Bearing - DE:</b>	6312C3
<b>Alt Service Factor:</b>	--	<b>Bearing - ODE:</b>	6212C3

**Enclosure is Totally Enclosed Fan-Cooled**

---

**Stamped Nameplate Notes:**

LRA: 748.4/374.2

50HZ DATA:40 HP,200/400V,116/58 AMPS @ 1.15 SF

50HZ DATA:50 HP,200/400V,126.4/63.2 AMPS @ 1.00 SF

GREASE TYPE: EXXON POLYREX EM

**Additional Information:**

CONDUIT BOX MATERIAL: CAST IRON

SUITABLE FOR USE IN CLASS I DIVISION 2 LOCATIONS

CLASS I DIVISION 2 GROUPS A,B,C,D T3C

CLASS I ZONE 2 IIC T3C



**Performance Characteristics**

1st Winding 1st Connection

**Design: 32AD0013A**

**Marks:**

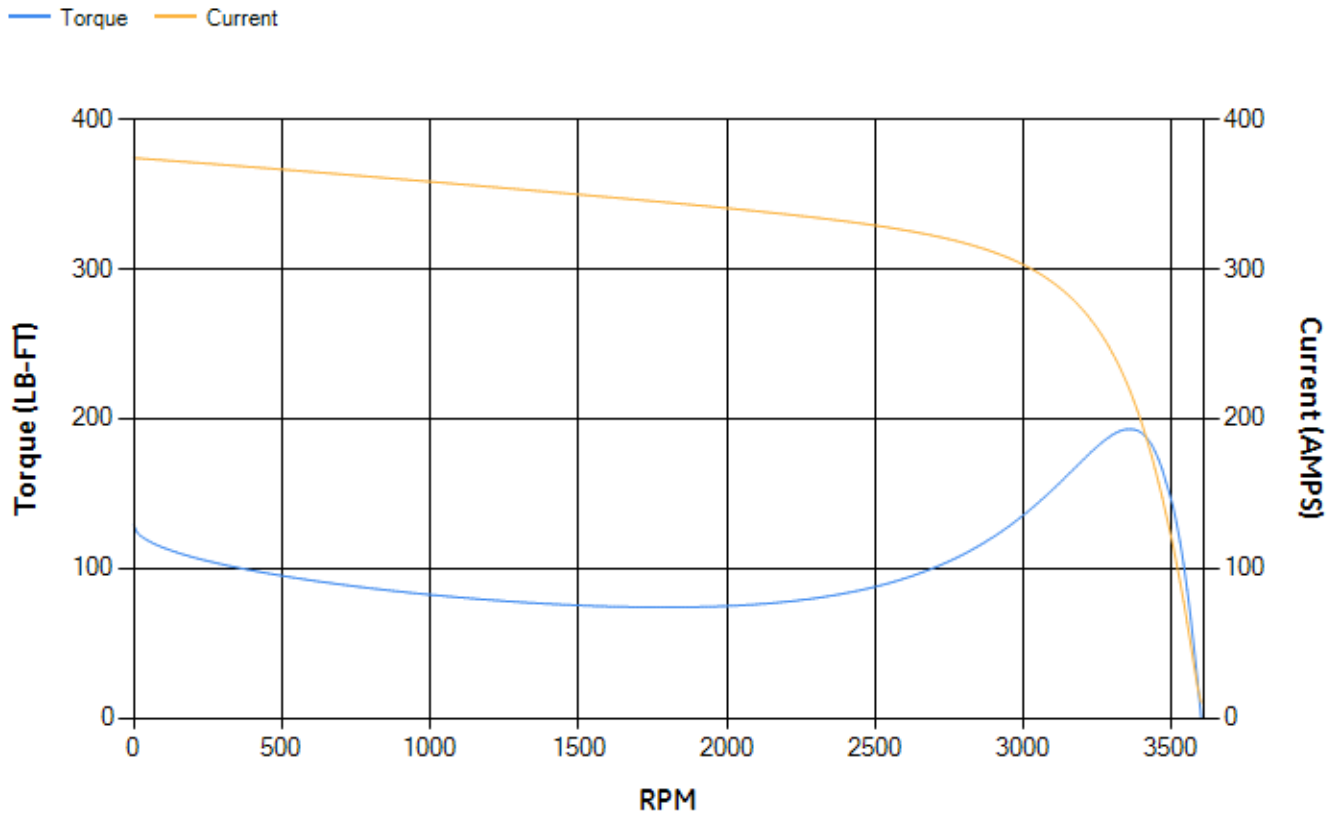
LOAD %	125.0	115.0	100.0	75.0	50.0	25.0	0.0
% EFF	92.01	92.41	93.12	93.39	93.05	89.91	0.00
% PF	91.21	91.53	91.76	91.2	88.17	75.57	11.16
AMPS	69.7	63.62	54.77	41.21	28.52	17.22	10.19

TORQ(FL)#FT	74.06	TORQ(LR)%FL	174.28	TORQ(BD)%FL	258.84
AMPS(LR)	374.22	PF AT START	0.27		

This motor is capable of two cold or one hot start with a maximum connected load inertia of 156 Lb-Ft Sq (6.57 Kg-meter Sq)at 100% voltage, where the load torque varies with the square of the speed. Acceleration time with maximum inertia and the above load type is 25 seconds. Safe stall time at 100% voltage is 49 seconds cold, 30 seconds hot. Rotor inertia is 5.71 Lb-Ft Sq (0.24 Kg-meter Sq).

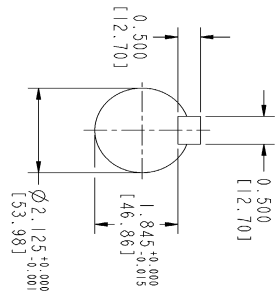
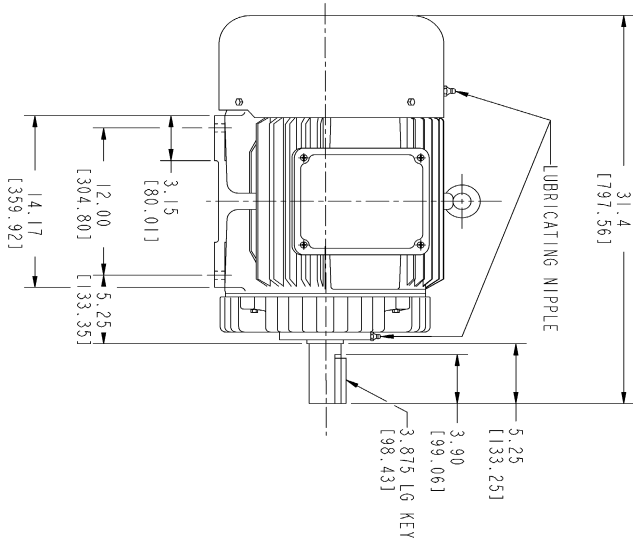
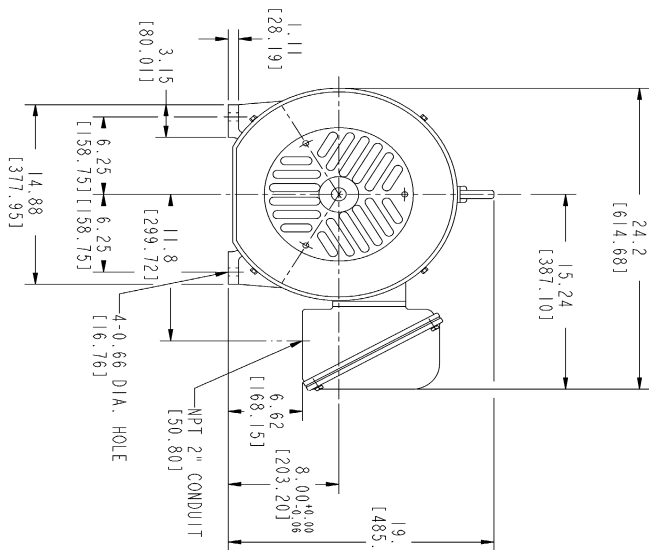
Open Circuit A-C:	0.956	Short Circuit D-C:	0.022
Short Circuit A-C:	0.025	X/R Ratio:	8.368
Stator Slots:	36	Rotor Slots:	28

**Speed Torque Current Curve (First Connection, First Speed)**

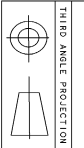


NAME:501291659 OBJECT:358B6274AC DATE:05-Dec-07 10:40:01

Marks:



- NOTES :
1. DIMENSIONS ARE IN INCHES.
  2. F-I ASW AS SHOWN.
  3. F-2 ASW - HAS CONDUIT BOX ON OPPOSITE SIDE.
  4. BRACKETED DIMENSIONS ARE METRIC (MILLIMETERS)
  5. ICA11, IP54, IMB34 APPLY



THIRD ANGLE PROJECTION  
Part must conform to SI 900000  
Sect 4, Toxicity Procedure

FOR ADDITIONAL INFO REFER TO:	SIGNATURES	DATE
APPLICABLE STANDARDS		
DESIGN SPECIFICATIONS		
DIMENSIONS IN INCHES		
DIMENSIONS IN MILLIMETERS		
TOLERANCES		
FRACTIONS		
ANGLES		
FINISH		

REV	DESCRIPTION	DATE	APPROVED

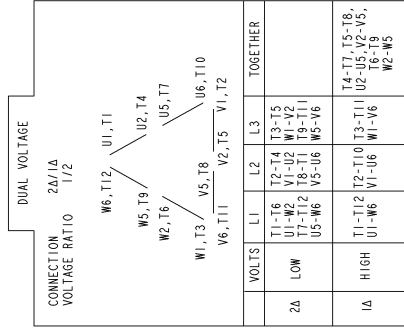
STANDARD NO.	358B6274AC	REV	0	SHEET	1
DESCRIPTION	OUTLINE				
DATE	11/14/07				
APPROVED	[Signature]				

GENERAL ELECTRIC COMPANY	FD - 326T TEFC CE MARK
2729 CU IN CONDUIT BOX	358B6274AC
SCALE: C	SHEET 1 OF 1

Marks:

**Connection Diagram**  
**GEM2034E-FIG210**



NAME:501452353 OBJECT:GEM2034E-FIG210 DATE:25-Feb-08 14:03:35

