

# Product Information Packet

November 9, 2016

Data shown is for the current revision model #. Ensure your nameplate model # matches.

<b>Model Number:</b>	<b>5KS254XAE5722A</b>
<b>Catalog Number:</b>	<b>V772</b>
<b>Instruction Manual:</b>	GEK-95351
<b>Connection Diagram:</b>	GEM2034E-FIG1
<b>Outline Drawing:</b>	4002B5825PPP5310

<b>Accessory Connection Diagrams</b>			
<b>Bearing Thermocouple:</b>	None	<b>Heater:</b>	None
<b>RTD:</b>	None	<b>Thermistor:</b>	None
<b>Thermostat:</b>	None	<b>Winding Thermocouple:</b>	None
<b>Bearing RTD:</b>	None		

## Table of Contents

Specification	01
Performance Characteristics	02
Outline Drawing	03
Connection Drawing(s)	04
Spare parts	05



**Marks:**

<b>MODEL NUMBER:</b>	<b>5KS254XAE5722A</b>	<b>Estimated Weight:</b>	315 Lbs
<b>Outline Drawing:</b>	4002B5825PPP5310	<b>Time Rating:</b>	CONT
<b>Connection Diagram:</b>	GEM2034E-FIG1	<b>Enclosure:</b>	TEFC
<b>Instruction Book:</b>	GEK-95351	<b>Encl Construction:</b>	841
<b>Design Code:</b>	25BD0090A	<b>Ambient Max(°C):</b>	40
<b>Type:</b>	KS	<b>Alt Ambient Max(°C):</b>	--
<b>Frame:</b>	L254LP10	<b>Insulation Class:</b>	H
<b>Phases:</b>	3	<b>NEMA Design:</b>	B
<b>Poles:</b>	2	<b>Nominal Efficiency:</b>	91 %
<b>Output Power:</b>	15HP 11.1KW	<b>Guaranteed Efficiency:</b>	90.2
<b>RPM:</b>	3550	<b>3/4 Load Efficiency:</b>	91.8
<b>Voltage:</b>	460	<b>KVA Code:</b>	G
<b>Hertz:</b>	60	<b>Max KVAR:</b>	2.9
<b>Amps - FL:</b>	17.3	<b>Power Factor:</b>	89.0
<b>Service Factor:</b>	1.15	<b>Bearing - DE:</b>	5211
<b>Alt Service Factor:</b>	--	<b>Bearing - ODE:</b>	6309-2ZC3

**Enclosure is Totally Enclosed Fan-Cooled**

**Stamped Nameplate Notes:**

VERTICAL-841  
 PREMIUM EFFICIENT MOTOR  
 DE BRG 5211 ODE BRG 45BC03JP3  
 INLINE MOTOR  
 EXCEPTION TO IEEE-STD-841-2009:THRUST BRG ON DE  
 INVERTER DUTY PER NEMA MG1 PART 31  
 ALTERNATE RATING FOR PWM CONTROL:  
 1.0 SF VAR TORQUE RANGE 0-60 HZ  
 MAX EXPOSED INTERNAL AND EXTERNAL SURFACE  
 TEMPERATURES UNDER USUAL SERVICE CONDITIONS  
 AT 1.00 S.F. DO NOT EXCEED 200 DEG C  
 STAMP NP249A5499AP AS BELOW:  
 MODEL:5KS254XAE5722A S/N: XXX  
 EX NA IIC T3 GC CSA.09.2216219  
 CLASS I, ZONE 2, AEX NA IIC T3  
 CLASS I, DIV 2, GROUPS A, B, C, D T3  
 -25C <= TAMB <= 40C

**Additional Information:**

2P - LP EXTN  
 C/BOX 137 CU IN-1.25 NPT  
 PAINTED FRAME ID & SHAFT,  
 FAN COVER INSIDE & ODE E/S OUTSIDE  
 ROUTINE AND 5 POINT VIBRATION TESTS INCL IN C/BOX  
 INPRO SEAL BOTH ENDS  
 E/SHLD GROUND STUD MTD ON DE C/BOX SIDE  
 SHAFT RUNOUT LIMIT .001" TIR



RCF 5000 CPM, STATIC DEFLECTION .0014 INCHES &  
CENTER OF GRAVITY 10.75 INCHES  
SOLID SHAFT INLINE  
COPPER WASHER UNDER HEADS OF BEARING CAP BOLTS  
APPLY TITE-SEAL (A50CD427A) ON BEARING CAP SCREWS, RABBETS,  
AND PLUG THREADS  
OIL RESISTANT SLEEVING ON LEADS  
BEARING LIFE 26280 HOURS AT 727 LB THRUST  
UTD REPLACEMENT FOR 5KS254XAE5722



**Performance Characteristics**

1st Winding 1st Connection

**Design: 25BD0090A**

**Marks:**

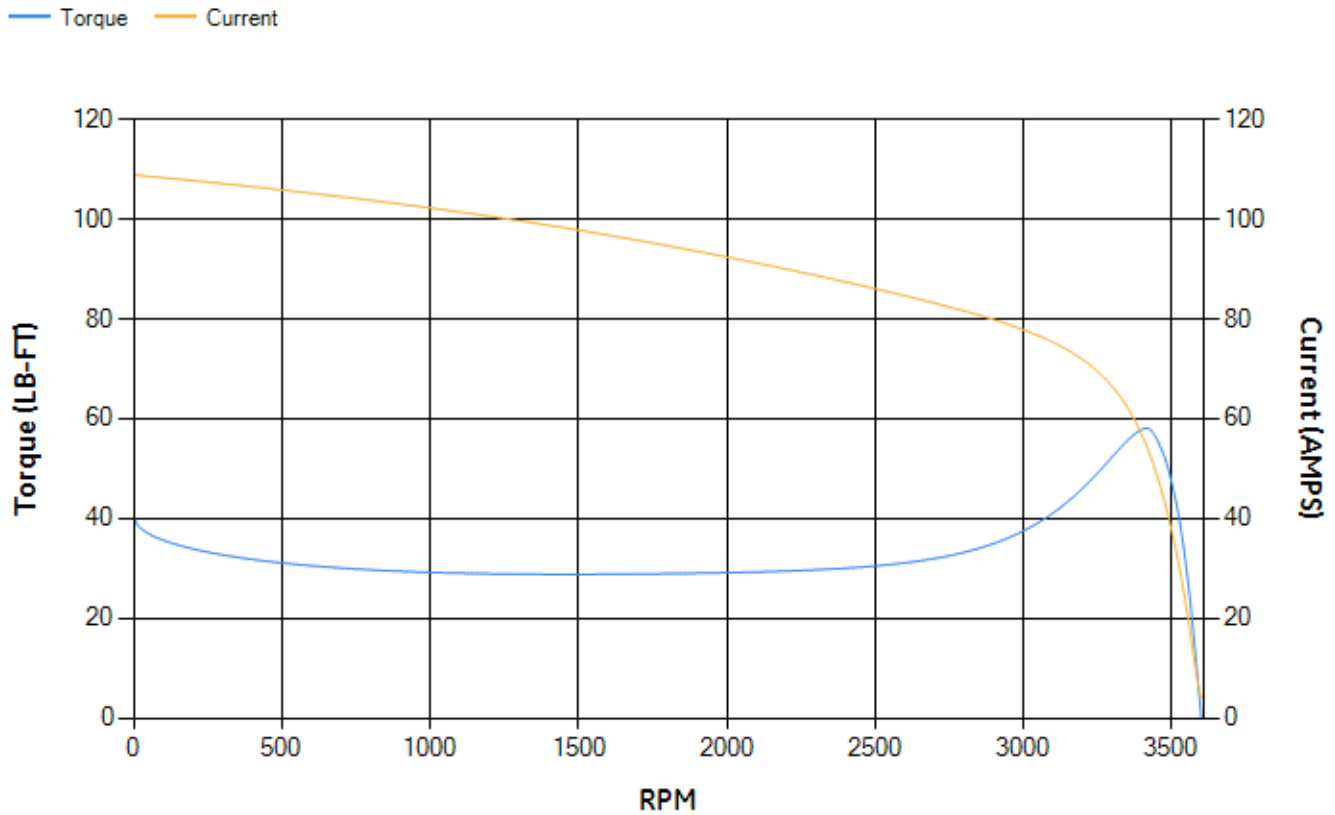
LOAD %	125.0	115.0	100.0	75.0	50.0	25.0	0.0
% EFF	89.46	90.13	91.15	91.83	91.73	88.48	0.00
% PF	88.61	89.02	89.24	88.25	83.82	67.77	9.58
AMPS	22.14	20.12	17.26	12.99	9.13	5.85	4.01

TORQ(FL)#FT	22.19	TORQ(LR)%FL	182.51	TORQ(BD)%FL	260.79
AMPS(LR)	108.87	PF AT START	0.3		

This motor is capable of two cold or one hot start with a maximum connected load inertia of 109 Lb-Ft Sq (4.59 Kg-meter Sq) at 100% voltage, where the load torque varies with the square of the speed. Acceleration time with maximum inertia and the above load type is 50 seconds. Safe stall time at 100% voltage is 94 seconds cold, 60 seconds hot. Rotor inertia is 1.05 Lb-Ft Sq (0.04 Kg-meter Sq).

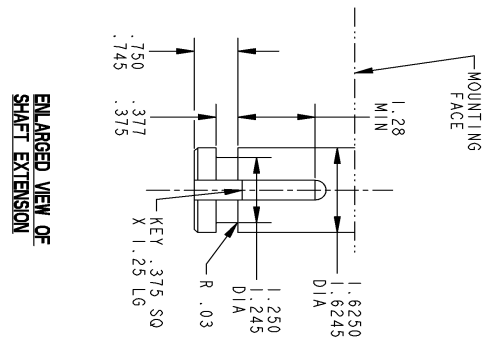
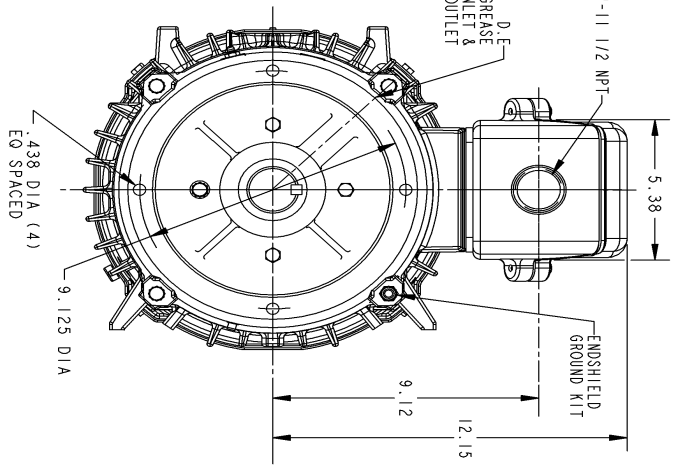
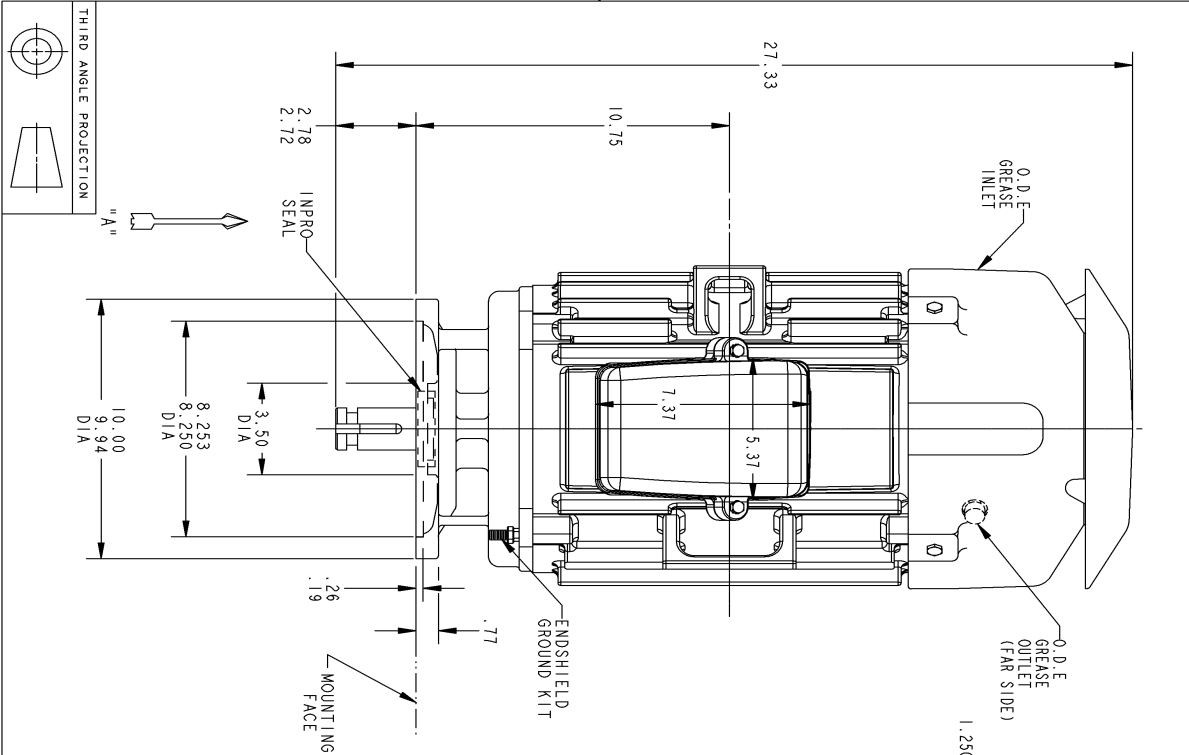
Open Circuit A-C:	0.844	Short Circuit D-C:	0.013
Short Circuit A-C:	0.031	X/R Ratio:	4.8
Stator Slots:	36	Rotor Slots:	26

**Speed Torque Current Curve (First Connection, First Speed)**



NAME:320002276 OBJECT:4002B5825PPP5310 DATE:22-Jun-09 19:40:35

Marks:

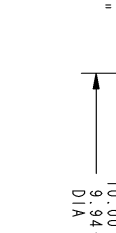
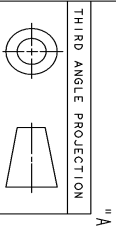


VIEW AT ARROW "A"

NOTE 1: CONDUIT BOX MAY BE ASSEMBLED WITH ENTRANCE UP, DOWN OR TO EITHER SIDE  
 NOTE 2: SHAFT RUNOUT NOT TO EXCEED .001 T. I. R.

SIZE DRAWING NO. 4002B5825PPP5310 REV 1 SHEET 1 OF 0

REV.	DESCRIPTION	DATE	APPROVED
1	ISAAC 09-05172, NOTE 3 DELETED RAGHU	06/22/09	DAN



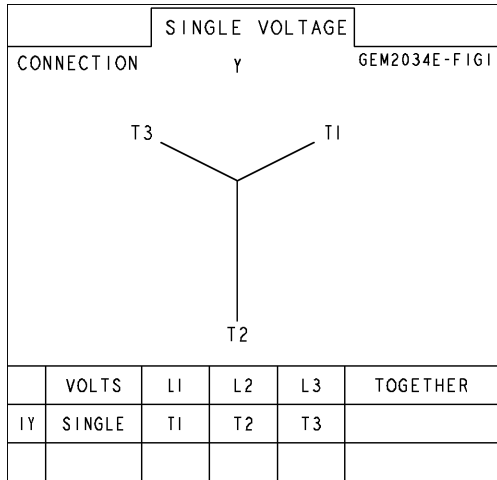
SIGNATURES	DATE	REV
MODEL: SMITHUN 11/29/08		
RETAIL: SMITHUN 11/29/08		
DESIGN: HEWARTH 11/29/08		
ENGR: SMITHUN 11/29/08		
ISSUED: SMITHUN 11/29/08		
SOLID MODEL: MODEL NAME		

GE Consumer & Industrial	GENERAL ELECTRIC COMPANY
INDUCTION MOTOR OUTLINE	
SOLID SHAFT INLINE IEEE 841 FEATURES	
FNF: FR250 TERC 1" BASE VERTICAL	
SIZE DRAWING	4002B5825PPP5310
SCALE: DRAWING S&M.E.DRW NO. : 4002B5825PPP5210	SHEET 1 OF 1

Marks:

**Connection Diagram**  
**GEM2034E-FIG1**



End shield Assembly		
Part Description	DE Side Part#	ODE Side Part#
End Shield	128D6129PS1	4004D5283SK1
Bearing		
Slinger/Inproseal		

Fan & Fan Cover Assembly	
Part Description	Part#
Fan	159C6704G02
Fan Cover	

Conduit & Accessories Box Assembly	
Part Description	Part#
Conduit Box	4002B5728PA-G04

Mechanical Accessories	
Part Description	Part#
Brake	
Tachometer	