

Product Information Packet

June 1, 2017

Data shown is for the current revision model #. Ensure your nameplate model # matches.

Model Number:	5KS326SAJ6005A
Catalog Number:	V4712
Instruction Manual:	GEK-95351
Connection Diagram:	GEM2034E-FIG9
Outline Drawing:	148CB32TMHKBCAA0001

Accessory Connection Diagrams

Bearing Thermocouple:	None	Heater:	3027JE-1C
RTD:	None	Thermistor:	None
Thermostat:	3027JE-2A	Winding Thermocouple:	None
Bearing RTD:	None		

Table of Contents

Specification	01
Performance Characteristics	02
Outline Drawing	03
Connection Drawing(s)	04
Spare parts	05



Marks:

MODEL NUMBER:	5KS326SAJ6005A	Estimated Weight:	1076 Lbs
Outline Drawing:	148CB32TMHKBCAA0001	Time Rating:	CONT
Connection Diagram:	GEM2034E-FIG9	Enclosure:	TEFC
Instruction Book:	GEK-95351	Encl Construction:	X\$D
Design Code:	32BD1183AA	Ambient Max(°C):	40
Type:	KS	Alt Ambient Max(°C):	--
Frame:	L326TP16	Insulation Class:	H
Phases:	3	NEMA Design:	B
Poles:	4	Nominal Efficiency:	94.5 %
Output Power:	50HP 37KW	Guaranteed Efficiency:	94.1 %
RPM:	1780	3/4 Load Efficiency:	94.7 %
Voltage:	230/460	KVA Code:	G
Hertz:	60	Max KVAR:	17.7
Amps - FL:	121.6/60.8	Power Factor:	81.5
Service Factor:	1.15	Bearing - DE:	6212C3
Alt Service Factor:	--	Bearing - ODE:	235A2523AD01

Enclosure is Totally Enclosed Fan-Cooled

Stamped Nameplate Notes:

HTR LDS HE1-HE2 115V 100W
 ROT CCW FACING ODE LEAD/PH SEQ 1-2-3/1-2-3
 THERMOSTAT LEADS TB1-TB2 TRIP
 INVERTER DUTY PER NEMA MG1 PART 31
 ALTERNATE RATING FOR PWM CONTROL:1.0SF 40C AMBIENT
 VAR TORQUE RANGE 5-60 HZ
 SUITABLE FOR 40 HP, 190/380V, 50 HZ WITH
 117.6/58.8 AMPS AND 1480 RPM AT 1.00 SF

Additional Information:

4 POLE, VERT HOLLOW SHAFT HIGH THRUST (1D)
 SPECIAL BALANCE
 346 CU IN - 3.00" NPT
 BEARING LIFE 8760 HRS AT 5700 LB THRUST
 OIL RESISTANT SLEEVING ON LEADS
 N.C. TRIP TSTAT LDS TO MAIN CONDUIT BOX
 115V HTR LDS TO MAIN CONDUIT BOX
 COUPLING NOT INCLUDED IN BOM, WILL BE
 ORDERED SEPERATELY
 SHAFT GROUNDING RING MOUNTED ON DE BRG CAP
 RCF: 3210 CPM AT C/BOX SIDE, 3510 CPM AT
 90 DEG FROM C/ BOX SIDE
 CG: 17.55 IN FROM P-BASE FACE

Performance Characteristics

1st Winding 1st Connection

Design: 32BD1183AA

Marks:

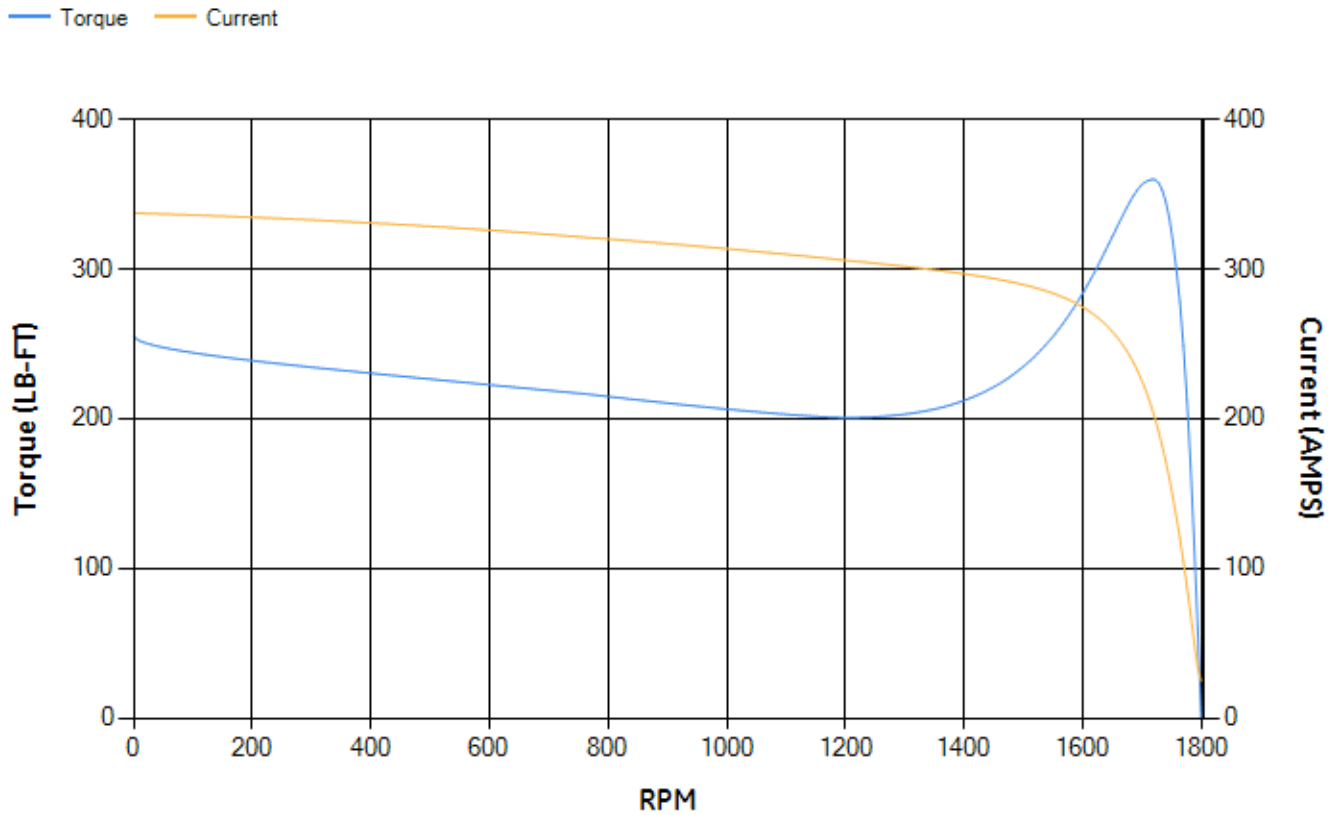
LOAD %	125.0	115.0	100.0	75.0	50.0	25.0	0.0
% EFF	93.4	93.67	94.18	94.17	93.58	90.24	0.00
% PF	83.06	82.61	81.35	76.96	67.02	45.01	4.25
AMPS	75.39	69.55	60.94	48.43	37.31	28.8	24.69

TORQ(FL)#FT	147.63	TORQ(LR)%FL	173.12	TORQ(BD)%FL	242.81
AMPS(LR)	337.37	PF AT START	0.34		

This motor is capable of two cold or one hot start with a maximum connected load inertia of 1074 Lb-Ft Sq (45.22 Kg-meter Sq)at 100% voltage, where the load torque varies with the square of the speed. Acceleration time with maximum inertia and the above load type is 34 seconds. Safe stall time at 100% voltage is 78 seconds cold, 41 seconds hot. Rotor inertia is 8.61 Lb-Ft Sq (0.36 Kg-meter Sq).

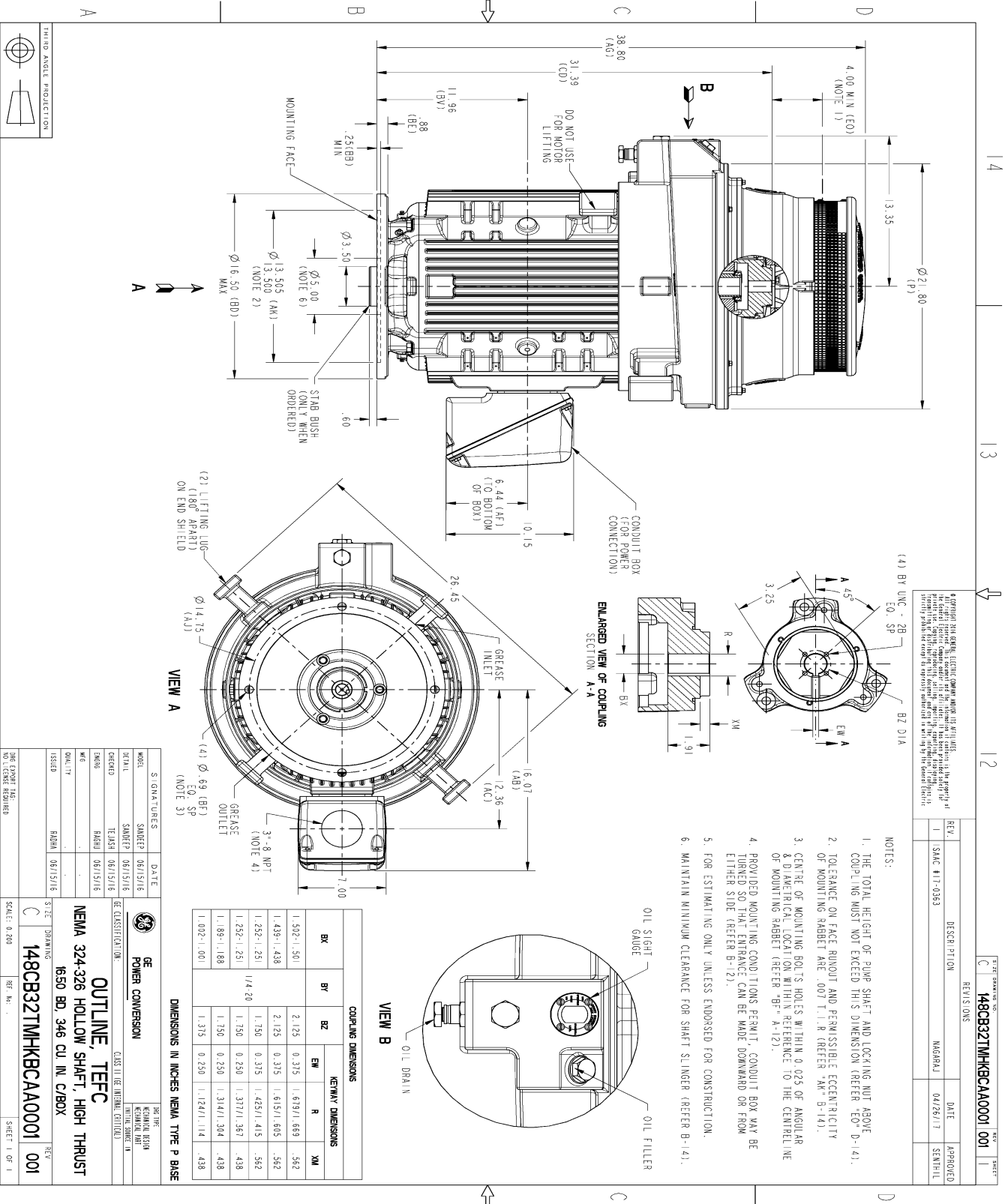
Open Circuit A-C:	0.515	Short Circuit D-C:	0.023
Short Circuit A-C:	0.031	X/R Ratio:	8.75
Stator Slots:	48	Rotor Slots:	38

Speed Torque Current Curve (First Connection, First Speed)



Marks:

SOLID MODEL: 148CB32TMHKBCAA0001



4. GENERAL NOTE: ELECTRIC POWER MOTOR IS NOT TO BE USED FOR LIFTING. THE USER OF THIS MOTOR IS RESPONSIBLE FOR THE PROPER USE OF THE MOTOR. THE USER SHALL BE RESPONSIBLE FOR THE PROPER USE OF THE MOTOR. THE USER SHALL BE RESPONSIBLE FOR THE PROPER USE OF THE MOTOR. THE USER SHALL BE RESPONSIBLE FOR THE PROPER USE OF THE MOTOR.

NOTES:

1. THE TOTAL HEIGHT OF PUMP SHAFT AND LOCKING NUT ABOVE COUPLER MUST NOT EXCEED THIS DIMENSION (REFER EO-D-14).
2. TOLERANCE ON FACE RUNOUT AND PERMISSIBLE ECCENTRICITY OF MOUNTING RABBIT ARE .007 T.I.R. (REFER AK-B-14).
3. CENTRE OF MOUNTING BOLTS HOLES WITHIN 0.025 OF ANGULAR & DIAMETRICAL LOCATION WITHIN REFERENCE TO THE CENTRELINE OF MOUNTING RABBIT (REFER BF-A-12).
4. PROVIDED MOUNTING CONDITIONS PERMIT, CONDUIT BOX MAY BE TURNED SO THAT ENTRANCE CAN BE MADE DOWNWARD OR FROM EITHER SIDE (REFER B-12).
5. FOR ESTIMATING ONLY UNLESS ENDORSED FOR CONSTRUCTION.
6. MAINTAIN MINIMUM CLEARANCE FOR SHAFT SLINGER (REFER B-14).

COUPLER DIMENSIONS		NEWAY DIMENSIONS	
BY	BZ	EW	XM
1.502 ± .501	2.125	0.375	1.819/1.669
1.439 ± .438	2.125	0.375	1.819/1.605
1.252 ± .251	1.750	0.375	1.425/1.415
1.252 ± .251	1.750	0.250	1.377/1.367
1.189 ± .188	1.750	0.250	1.314/1.304
1.002 ± .001	1.315	0.250	1.124/1.114

DIMENSIONS IN INCHES NEMA TYPE P BASE

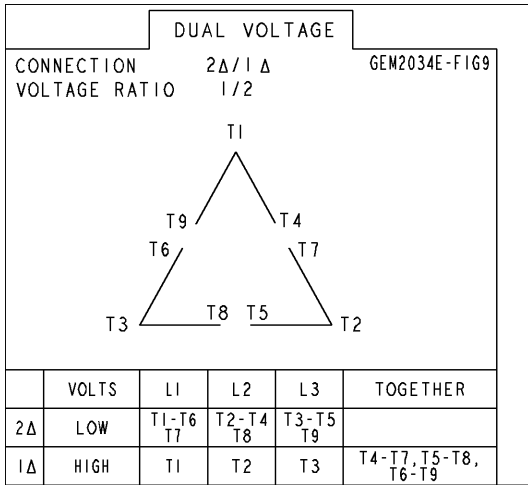
MODEL	5KS326SAJ6005A	DATE	06/15/16
DESIGN	SMR/EP	DESIGNER	SMR/EP
CHECKED	TEJASH	DATE	06/15/16
DRAWN	RAJIB	DATE	06/15/16
W/E			
QUALITY			
ISSUED	RDIN	DATE	06/15/16

GE POWER CONVERSION
 NEMA 324-326 HOLLOW SHAFT, HIGH THRUST
 1650 BD, 346 CU IN, C/BOX
 DRAWING NO. 148CB32TMHKBCAA0001
 SCALE: 0.200
 SHEET 1 OF 1

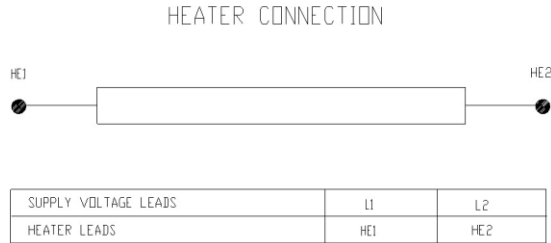
REV.	DESCRIPTION	DATE	APPROVED
1	SMC #17-0363	04/26/17	SENTHIL

Marks:

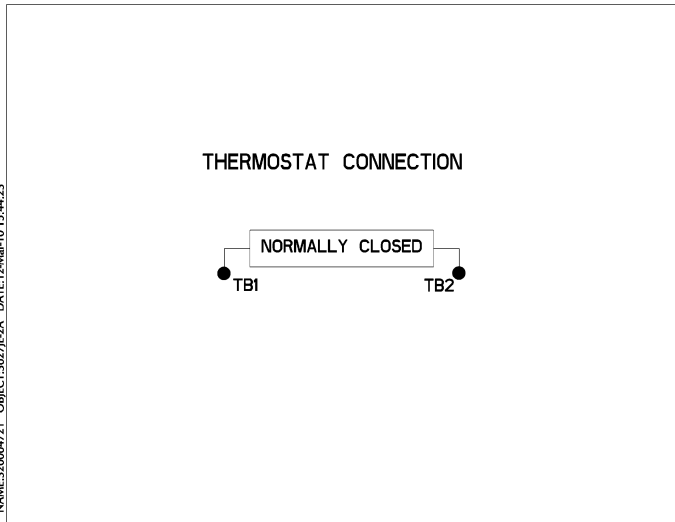
Connection Diagram
GEM2034E-FIG9



Heater Connection
3027JE-1C



Thermostat Connection
3027JE-2A



NAME:32000471 OBJECT:3027JE-2A DATE:12-Mar-10 15:44:23

End shield Assembly		
Part Description	DE Side Part#	ODE Side Part#
End Shield	115E8205AA1	115E8208LA1
Bearing	235A2509BE01	235A2523AD01
Slinger/Inproseal	235A2300FM1	

Fan & Fan Cover Assembly	
Part Description	Part#
Fan	153B1887G02
Fan Cover	128D6846AA1

Conduit & Accessories Box Assembly	
Part Description	Part#
Conduit Box	149C4429AA2

Mechanical Accessories	
Part Description	Part#
Brake	
Tachometer	