

Product Information Packet

November 7, 2016

Data shown is for the current revision model #. Ensure your nameplate model # matches.

Model Number:	5CD194NA067A052
Catalog Number:	D543
Instruction Manual:	GEH-3967N
Connection Diagram:	36A167900CB501
Outline Drawing:	36A167946AA001

Accessory Connection Diagrams			
Bearing Thermocouple:	None	Heater:	None
RTD:	None	Thermistor:	None
Thermostat:	None	Winding Thermocouple:	None
Bearing RTD:	None		

Table of Contents	
Specification	01
Outline Drawing	02
Connection Drawing(s)	03

Marks:

MODEL NUMBER:	5CD194NA067A052	Enclosure Mtg Assem:	36A167775AA001
Outline Drawing:	36A167946AA001	Instruction Book:	GEH-3967N
Connection Diagram:	36A167900CB501	RPM:	1150/2000
Horsepower:	50	Armature Amps:	80
Armature Volts:	500	Type:	CD368AT
Wound:	SHUNT	Power Supply Code:	C
Enclosure:	DPFG	Insulation Class:	F
Duty:	CONT	Ambient Max (°C):	40 C
Rating Code:	194N1150-07	Field Volts:	300/150
K(V):	3.92 Cemf volts/Radian/Sec	WK2:	22.20Lb Ft2
K(T):	2.85 Ft/Amp	Year of Manufacture:	2016
Minimum Ambient:	0 C	Max Altitude:	3300 Ft

Resistances at 25 Degrees C :

Shunt Field:	87 OHMS
Armature:	.1922 OHMS
Commutator Field:	.0638 OHMS

Inductances:

Armature Circuit Total:	6.410 mH Saturated
Shunt Field:	48.0 Henries Unsaturated

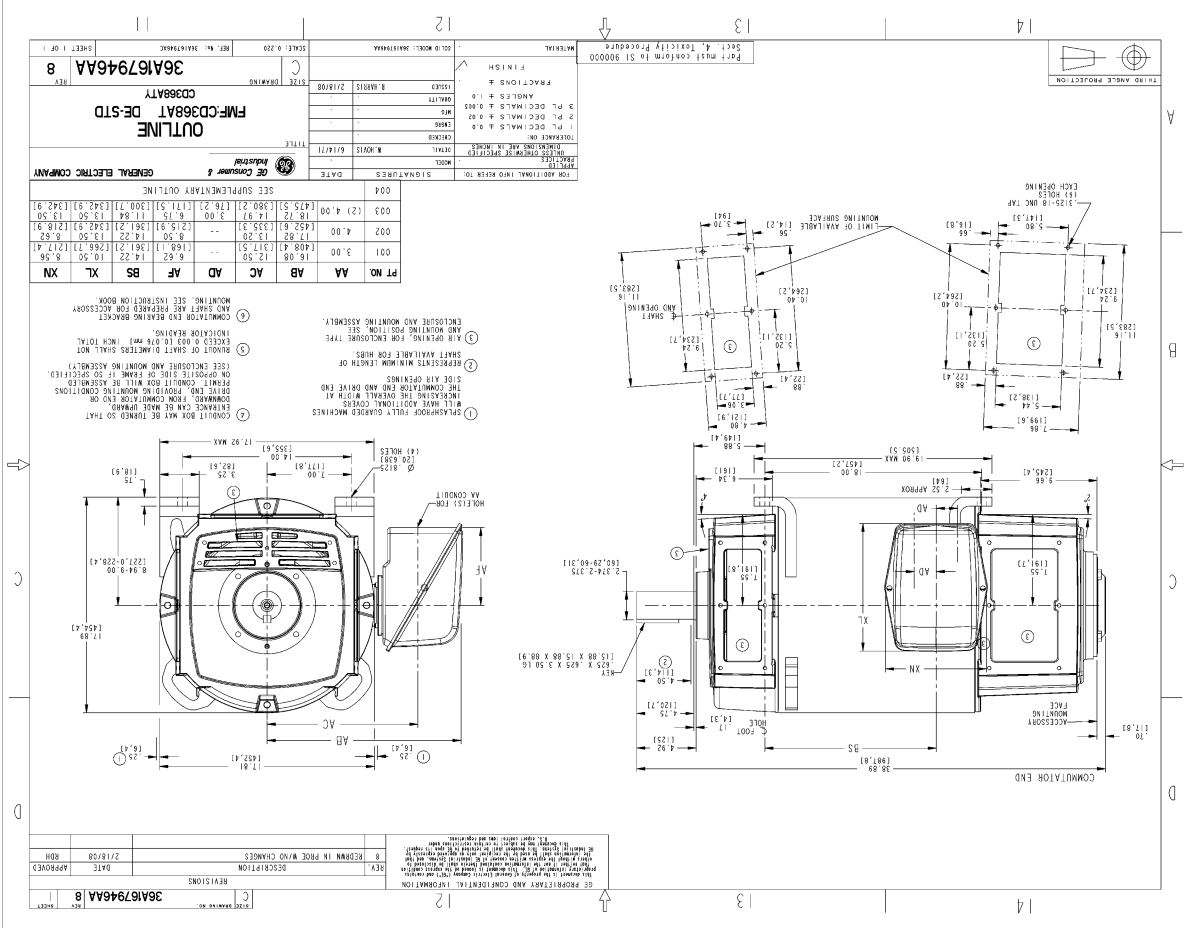
Shunt Field Data:

Shunt Field Current(1): 2.5 AMPS at Rated Load and 1150 RPM
 Shunt Field Current(2): 1.93 AMPS at Rated Load and 1433 RPM
 Shunt Field Current(3): 1.32 AMPS at Rated Load and 2000 RPM

Additional Machine Notes:

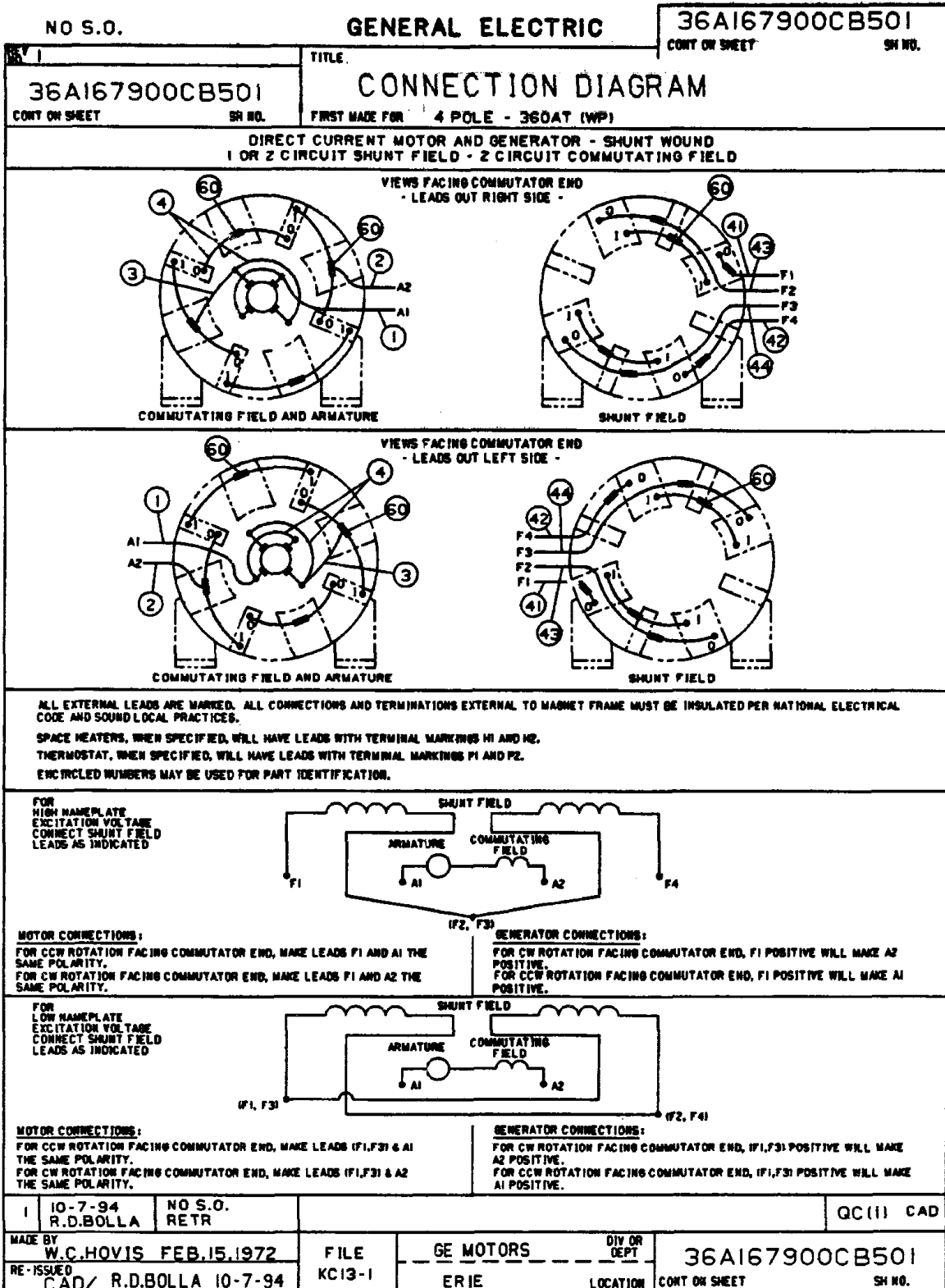
DRIPPROOF FULLY GUARDED - BALL BEARINGS
 CONDUIT BOX ON RIGHT HAND SIDE FACING COMMUTATOR END
 STANDARD SHAFT DRIVE END ONLY - WITH FEET
 WITH:
 CSA STAMP
 THERMOSTAT- NORMALLY CLOSED, AC RATING- 600V MAX-
 .5A, 250V-1.5A, OR 125V-3A- DC RATING- 30V MAX-
 1.5A. MAXIMUM CURRENT BASED ON INDUCTIVE LOADS UP
 TO AND INCLUDING NEMA NO. 5 CONTACTOR.

Marks:



NAME: 20800954 OBJ: C:\36A167946AA DATE: 2-19-08 16:11:00

Marks:



DC2-28112-15-671