

Product Information Packet

November 8, 2016

Data shown is for the current revision model #. Ensure your nameplate model # matches.

Model Number:	5KS284STE305A
Catalog Number:	M7547
Instruction Manual:	GEI-M1031
Connection Diagram:	GEM2034E-FIG210
Outline Drawing:	358B6273AA

Accessory Connection Diagrams			
Bearing Thermocouple:	None	Heater:	None
RTD:	None	Thermistor:	None
Thermostat:	None	Winding Thermocouple:	None
Bearing RTD:	None		

Table of Contents	
Specification	01
Performance Characteristics	02
Outline Drawing	03
Connection Drawing(s)	04

Marks:

MODEL NUMBER:	5KS284STE305A	Estimated Weight:	348 Lbs
Outline Drawing:	358B6273AA	Time Rating:	CONT
Connection Diagram:	GEM2034E-FIG210	Enclosure:	TEFC
Instruction Book:	GEI-M1031	Encl Construction:	SD
Design Code:	28AD3006A	Ambient Max(°C):	40
Type:	KS	Alt Ambient Max(°C):	--
Frame:	284T	Insulation Class:	F
Phases:	3	NEMA Design:	B
Poles:	6	Nominal Efficiency:	91.7 %
Output Power:	15HP 11.1KW	Guaranteed Efficiency:	90.2
RPM:	1170	3/4 Load Efficiency:	92.6
Voltage:	230/460	KVA Code:	G
Hertz:	60	Max KVAR:	4.4
Amps - FL:	37.0/18.5	Power Factor:	83
Service Factor:	1.15	Bearing - DE:	6310ZZ
Alt Service Factor:	--	Bearing - ODE:	6210ZZ

Enclosure is Totally Enclosed Fan-Cooled

Stamped Nameplate Notes:

6 POLE, TEFC,
 IP54;IBM3; MASS 158KG; MIN AMB -15C; MAX ALT 1000M
 USABLE AT 200V @ 15 HP, 40.9 AMPS @ 1.0 SF
 50HZ DATA @ 1.15 SF: 10.0/7.5 HP,
 200/400V, 32.0/16.0 AMPS: 50HZ DATA @ 1.00 SF
 15.0/11.2 HP, 200/400V, 42.0/21.0 AMPS
 GREASE TYPE: SHELL ALVANIA R3 LITHIUM GREASE

Additional Information:

6 POLE, TEFC,
 DUAL DIMENSION OUTLINE, IP54
 NO. OF MOTOR LEADS: 12
 CONDUIT BOX VOLUME (CU IN): 272.9
 CONDUIT BOX MATERIAL: CAST IRON
 SUITABLE FOR USE IN CLASS I DIVISION 2 LOCATIONS
 CLASS I DIVISION 2 GROUPS A,B,C,D T3C
 CLASS I ZONE 2 IIC T3C

Performance Characteristics

1st Winding 1st Connection

Design: 28AD3006A

Marks:

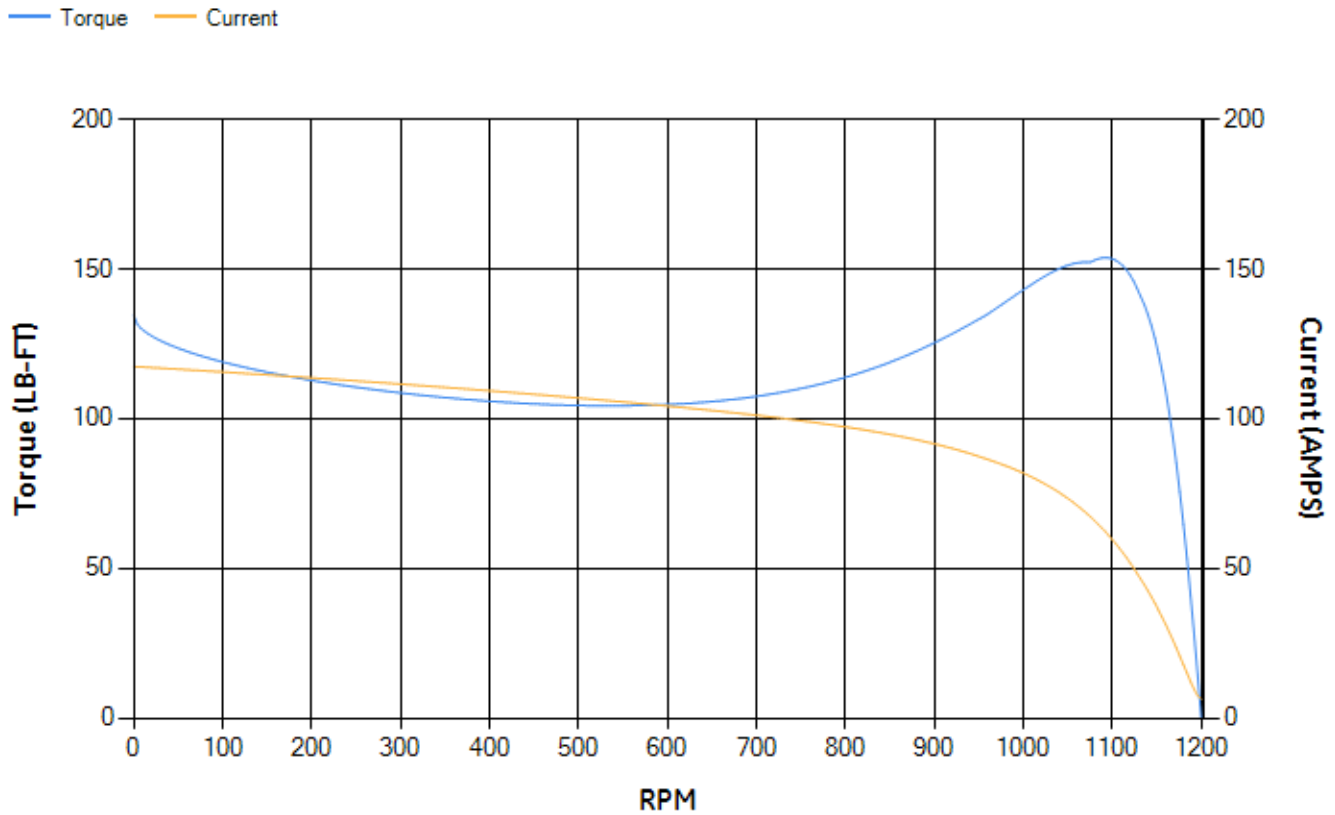
LOAD %	125.0	115.0	100.0	75.0	50.0	25.0	0.0
% EFF	89.98	90.63	91.69	92.55	92.85	90.66	0.00
% PF	85.84	85.49	84.46	80.71	71.8	50.14	4.48
AMPS	22.72	20.84	18.13	14.1	10.53	7.72	6.32

TORQ(FL)#FT	67.08	TORQ(LR)%FL	200.72	TORQ(BD)%FL	225.35
AMPS(LR)	117.42	PF AT START	0.39		

This motor is capable of two cold or one hot start with a maximum connected load inertia of 740 Lb-Ft Sq (31.15 Kg-meter Sq)at 100% voltage, where the load torque varies with the square of the speed. Acceleration time with maximum inertia and the above load type is 30 seconds. Safe stall time at 100% voltage is 75 seconds cold, 48 seconds hot. Rotor inertia is 5.23 Lb-Ft Sq (0.22 Kg-meter Sq).

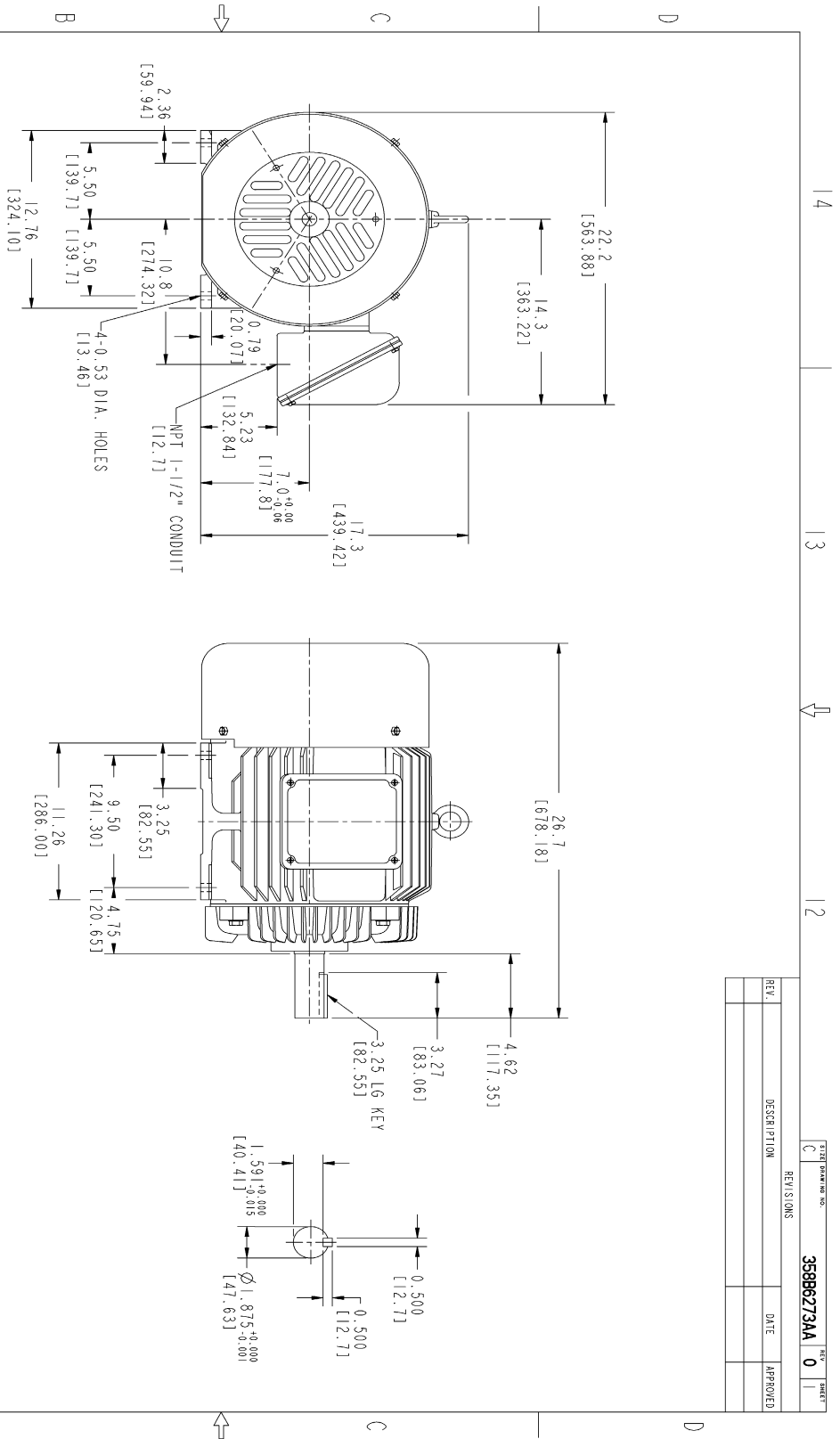
Open Circuit A-C:	0.353	Short Circuit D-C:	0.011
Short Circuit A-C:	0.017	X/R Ratio:	4.265
Stator Slots:	72	Rotor Slots:	60

Speed Torque Current Curve (First Connection, First Speed)



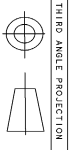
NAME:501291659 OBJECT:358B6273AA DATE:05-Dec-07 10:27:59

Marks:



NOTES :

1. DIMENSIONS ARE IN INCHES.
2. F-1 ASW AS SHOWN.
3. F-2 ASW - HAS CONDUIT BOX ON OPPOSITE SIDE.
4. BRACKETED DIMENSIONS ARE METRIC (MILLIMETERS)
5. IC411, IP54, IMB34 APPLY



THIRD ANGLE PROJECTION

Part must conform to SI 9000000 Sect 4, Toxicity Procedure

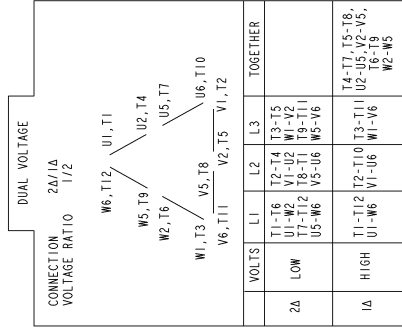
REV.	DESCRIPTION	DATE	APPROVED

358B6273AA REV 0 SHEET 1 OF 1

FOR ADDITIONAL INFO REFER TO:	SIGNATURES	DATE	GE Consumer & Industrial GENERAL ELECTRIC COMPANY OUTLINE FTD - 284T TERC CE MARK 2729 CU IN CONDUIT BOX
REFLECTED DIMENSIONS SPECIFIED	MODEL		
DIMENSIONS ON MILLIMETERS	QUANTITY		
DIMENSIONS ON INCHES	SKETCH		
TOLERANCE ON:	DESIGN		
1 PL DECIMALS ±	NAME		
2 PL DECIMALS ±	R. HOME		
3 PL DECIMALS ±	QUALITY		
ANGLES ±	ISSUED		
FRACTIONS ±	QUANTITY		
FINISH			
MATERIAL	SOLID MODEL NAME		
SCALE:	C		
	358B6273AA		
	REV 0		

Marks:

Connection Diagram
GEM2034E-FIG210



NAME:501452353 OBJECT:GEM2034E-FIG210 DATE:25-Feb-08 14:03:35