

Product Information Packet

November 9, 2016

Data shown is for the current revision model #. Ensure your nameplate model # matches.

| | |
|----------------------------|-----------------------|
| Model Number: | 5KS444LAA308D2 |
| Catalog Number: | M7962 |
| Instruction Manual: | GEI-56128 |
| Connection Diagram: | GEM2034E-FIG7 |
| Outline Drawing: | 239CC600AA |

| Accessory Connection Diagrams | | | |
|-------------------------------|------|------------------------------|------|
| Bearing Thermocouple: | None | Heater: | None |
| RTD: | None | Thermistor: | None |
| Thermostat: | None | Winding Thermocouple: | None |
| Bearing RTD: | None | | |

| Table of Contents | |
|-----------------------------|----|
| Specification | 01 |
| Performance Characteristics | 02 |
| Outline Drawing | 03 |
| Connection Drawing(s) | 04 |

Marks:

| | | | |
|----------------------------|-----------------------|-------------------------------|-----------|
| MODEL NUMBER: | 5KS444LAA308D2 | Estimated Weight: | 1850 Lbs |
| Outline Drawing: | 239CC600AA | Time Rating: | CONT |
| Connection Diagram: | GEM2034E-FIG7 | Enclosure: | TEFC |
| Instruction Book: | GEI-56128 | Encl Construction: | SD |
| Design Code: | 44BD3070A | Ambient Max(°C): | 40 |
| Type: | KS | Alt Ambient Max(°C): | -- |
| Frame: | 444T | Insulation Class: | F |
| Phases: | 3 | NEMA Design: | A |
| Poles: | 6 | Nominal Efficiency: | 95.0 % |
| Output Power: | 100HP 74KW | Guaranteed Efficiency: | 94.1 |
| RPM: | 1190 | 3/4 Load Efficiency: | 95.0 |
| Voltage: | 460 | KVA Code: | H |
| Hertz: | 60 | Max KVAR: | 36.3 |
| Amps - FL: | 121.0 | Power Factor: | 81.5 |
| Service Factor: | 1.15 | Bearing - DE: | 6318ZC3S0 |
| Alt Service Factor: | -- | Bearing - ODE: | 6318ZC3S0 |

Enclosure is Totally Enclosed Fan-Cooled

Stamped Nameplate Notes:

INVERTER DUTY PER NEMA MG1 PART 31
 ALTERNATE RATING FOR PWM CONTROL:1.0SF 40C AMBIENT
 VAR TORQUE RANGE 0-60 HZ

Additional Information:

6P - T EXTN
 700 CU IN - 3.00" NPT
 OIL RESISTANT SLEEVING ON LEADS
 F1 MOUNTING
 VIBRATION LIMIT 0.15 INCH PER SEC

Performance Characteristics

1st Winding 1st Connection

Design: 44BD3070A

Marks:

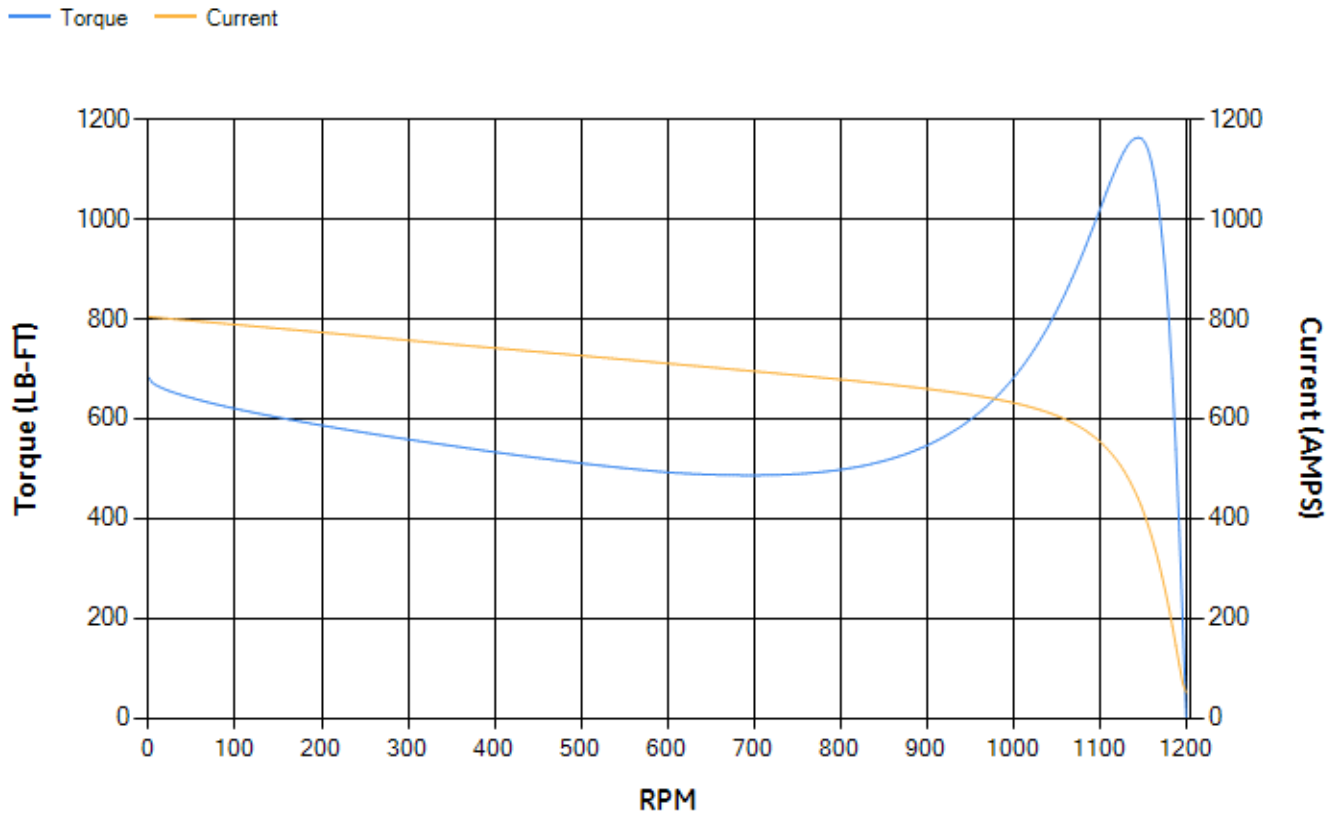
| LOAD % | 125.0 | 115.0 | 100.0 | 75.0 | 50.0 | 25.0 | 0.0 |
|--------|--------|--------|--------|-------|-------|-------|-------|
| % EFF | 94.38 | 94.59 | 95.04 | 94.98 | 94.46 | 91.55 | 0.00 |
| % PF | 83.64 | 83.04 | 81.58 | 76.81 | 66.42 | 44.01 | 3.69 |
| AMPS | 148.22 | 137.03 | 120.72 | 96.21 | 74.59 | 58.08 | 50.49 |

| | | | | | |
|--------------------|--------|--------------------|--------|--------------------|--------|
| TORQ(FL)#FT | 441.2 | TORQ(LR)%FL | 154.66 | TORQ(BD)%FL | 263.08 |
| AMPS(LR) | 804.08 | PF AT START | 0.31 | | |

This motor is capable of two cold or one hot start with a maximum connected load inertia of 4218 Lb-Ft Sq (177.58 Kg-meter Sq)at 100% voltage, where the load torque varies with the square of the speed. Acceleration time with maximum inertia and the above load type is 36 seconds. Safe stall time at 100% voltage is 73 seconds cold, 43 seconds hot. Rotor inertia is 73.82 Lb-Ft Sq (3.11 Kg-meter Sq).

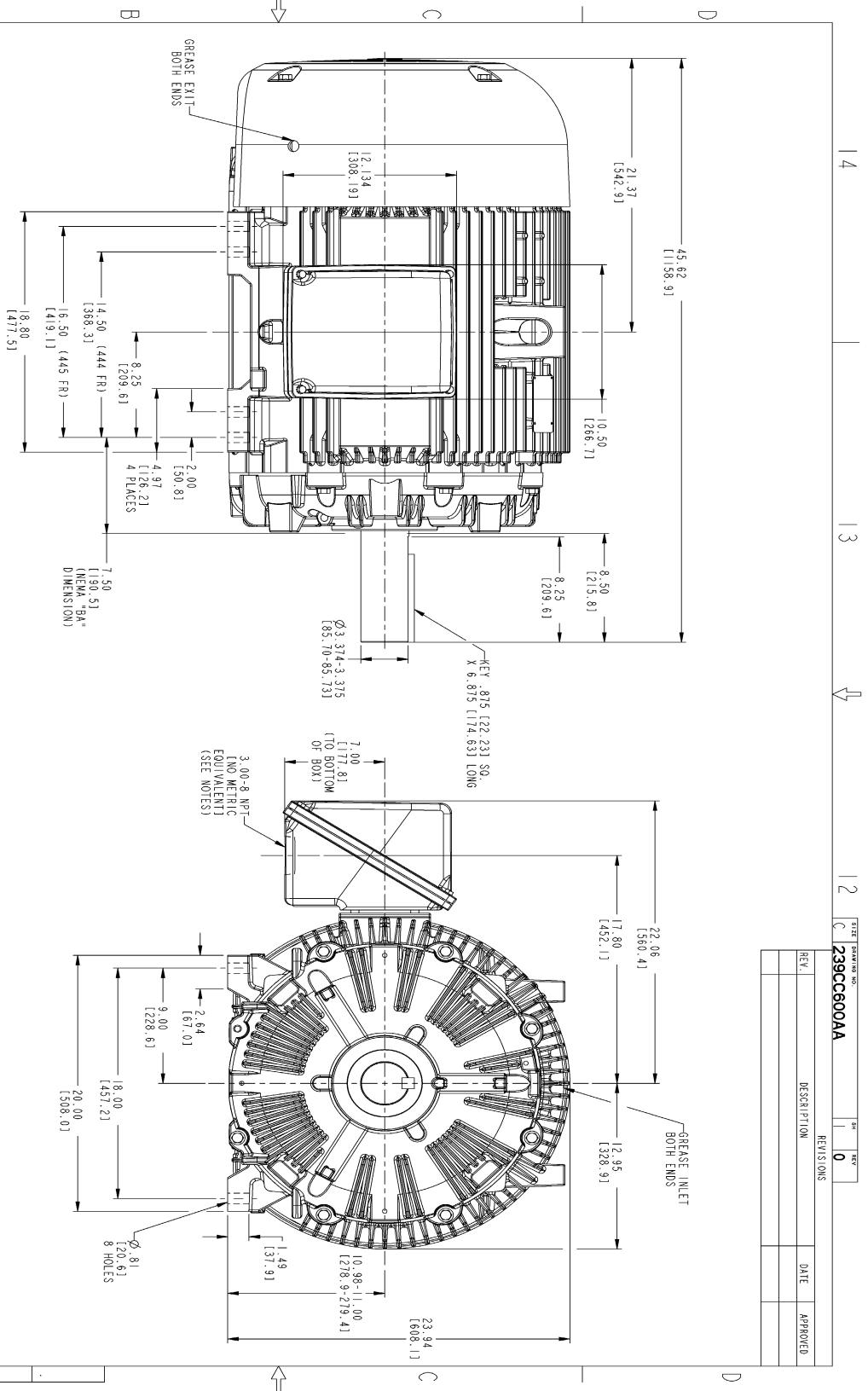
| | | | |
|---------------------------|-------|---------------------------|--------|
| Open Circuit A-C: | 0.716 | Short Circuit D-C: | 0.027 |
| Short Circuit A-C: | 0.048 | X/R Ratio: | 10.088 |
| Stator Slots: | 72 | Rotor Slots: | 58 |

Speed Torque Current Curve (First Connection, First Speed)

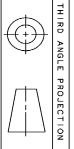


NAME:501352727 OBJECT:239CC600AA DATE:31-Jul-07 13:50:49

Marks:



- NOTES:
1. CONDUIT BOX MAY BE PLACED WITH THE ENTRANCE DOWN, UP OR ON EITHER I
 2. F-1 ASSEMBLY AS SHOWN.
 3. F-2 ASSEMBLY CONDUIT BOX ON OPPOSITE SIDE.
 4. BRACKETED DIMENSIONS ARE METRIC (MILLIMETERS).



| REV. | DESCRIPTION | DATE | APPROVED |
|------|-------------|------|----------|
| | | | |

| SIGNATURES | DATE | GE Industrial Systems | GENERAL ELECTRIC COMPANY |
|--------------------------|----------|-----------------------|--------------------------|
| DESIGNED: SAJAN 01/21/07 | 01/21/07 | | Fort Wayne, Indiana |
| DRAWN: SAJAN 01/21/07 | 01/21/07 | | |
| CHECKED: SAJAN 01/21/07 | 01/21/07 | | |
| ISSUED: SAJAN 01/21/07 | 01/21/07 | | |
| APPLIED PRACTICES | | | |
| SIZING DIMENSIONS | | | |
| 700 CU. IN. CONDUIT BOX | | | |
| 444/445 T. TEFC ESP | | | |
| 239CC600AA | | | |
| SCALE: 0.200 | REF. NO: | | |
| SHEET 1 OF 1 | | | |
| DISTRIBUTION: MMP | | | |

Marks:

Connection Diagram
GEM2034E-FIG7

