

Product Information Packet

November 8, 2016

Data shown is for the current revision model #. Ensure your nameplate model # matches.

Model Number:	5KS215STE205F2RG3
Catalog Number:	M7563
Instruction Manual:	GEI-M1031
Connection Diagram:	GEM2034E-FIG210
Outline Drawing:	358B6271AD

Accessory Connection Diagrams			
Bearing Thermocouple:	None	Heater:	None
RTD:	None	Thermistor:	None
Thermostat:	None	Winding Thermocouple:	None
Bearing RTD:	None		

Table of Contents	
Specification	01
Performance Characteristics	02
Outline Drawing	03
Connection Drawing(s)	04

Marks:

MODEL NUMBER:	5KS215STE205F2RG3	Estimated Weight:	202 Lbs
Outline Drawing:	358B6271AD	Time Rating:	CONT
Connection Diagram:	GEM2034E-FIG210	Enclosure:	TEFC
Instruction Book:	GEI-M1031	Encl Construction:	SD
Design Code:	21AD1015A	Ambient Max(°C):	40
Type:	KS	Alt Ambient Max(°C):	--
Frame:	215T	Insulation Class:	F
Phases:	3	NEMA Design:	A
Poles:	4	Nominal Efficiency:	91.7 %
Output Power:	10HP 7.4KW	Guaranteed Efficiency:	90.2
RPM:	1760	3/4 Load Efficiency:	92.6
Voltage:	230/460	KVA Code:	J
Hertz:	60	Max KVAR:	3.2
Amps - FL:	24.4/12.2	Power Factor:	84
Service Factor:	1.15	Bearing - DE:	6308ZZC3
Alt Service Factor:	--	Bearing - ODE:	6208ZZC3

Enclosure is Totally Enclosed Fan-Cooled

Stamped Nameplate Notes:

USABLE AT 200V @ 10 HP,27.3 AMPS @ 1.0 SF

LRA: 194.6/97.3

50HZ DATA: 7.5HP,200/400V,24.4/12.2 AMPS @ 1.15 SF

50HZ DATA: 10 HP,200/400V,27.6/13.8 AMPS @ 1.00 SF

GREASE TYPE: SHELL ALVANIA R3 LITHIUM GREASE

Additional Information:

CONDUIT BOX VOLUME (CU IN):66.7

CONDUIT BOX MATERIAL: CAST IRON

INVERTER DUTY PER NEMA MG1 PART 31

FOR VARIABLE TORQUE LOADS

BAM 1/12



Performance Characteristics

1st Winding 1st Connection

Design: 21AD1015A

Marks:

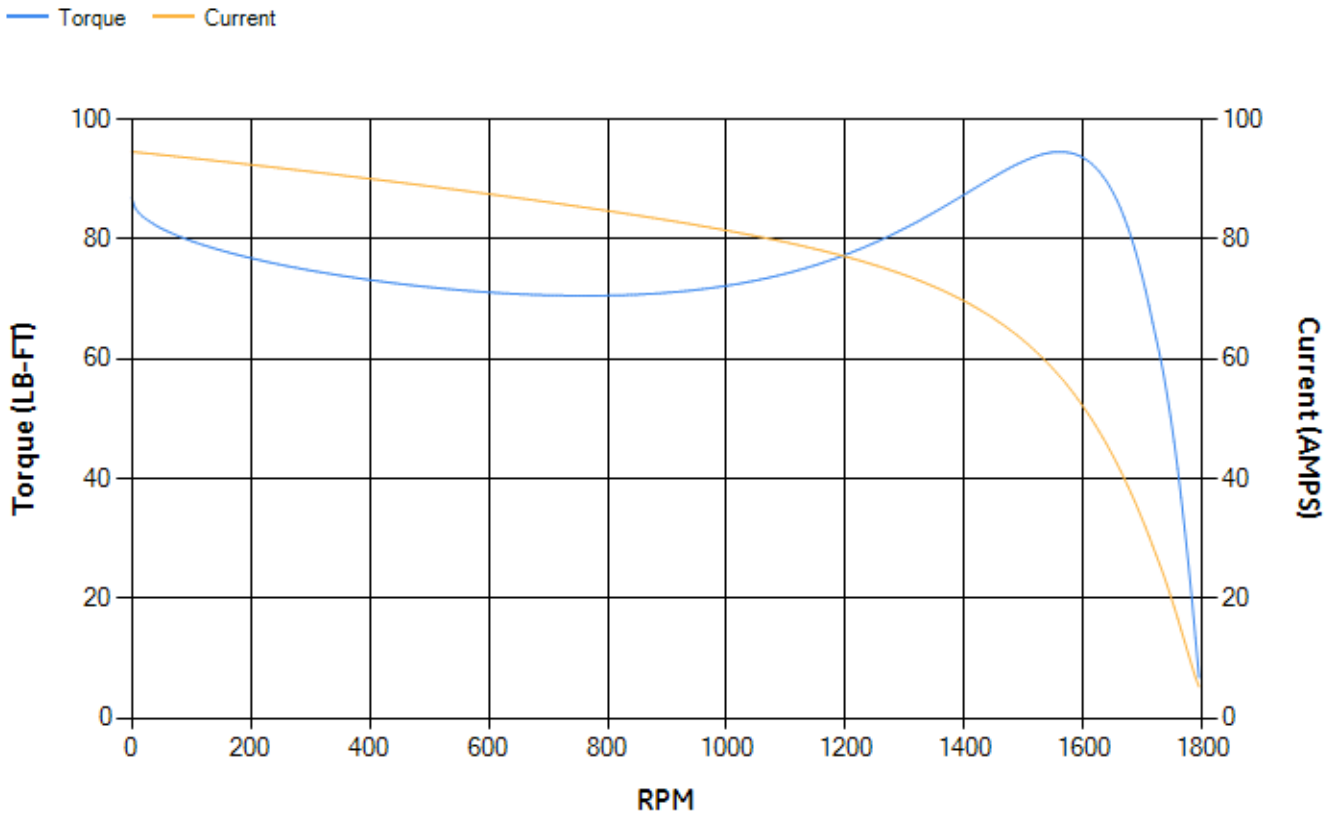
LOAD %	125.0	115.0	100.0	75.0	50.0	25.0	0.0
% EFF	90.71	91.22	92.07	92.57	92.41	89.33	0.00
% PF	85.34	84.92	83.79	79.82	70.62	49.01	5.2
AMPS	15.11	13.89	12.13	9.5	7.17	5.34	4.43

TORQ(FL)#FT	29.81	TORQ(LR)%FL	291.47	TORQ(BD)%FL	314.44
AMPS(LR)	94.59	PF AT START	0.43		

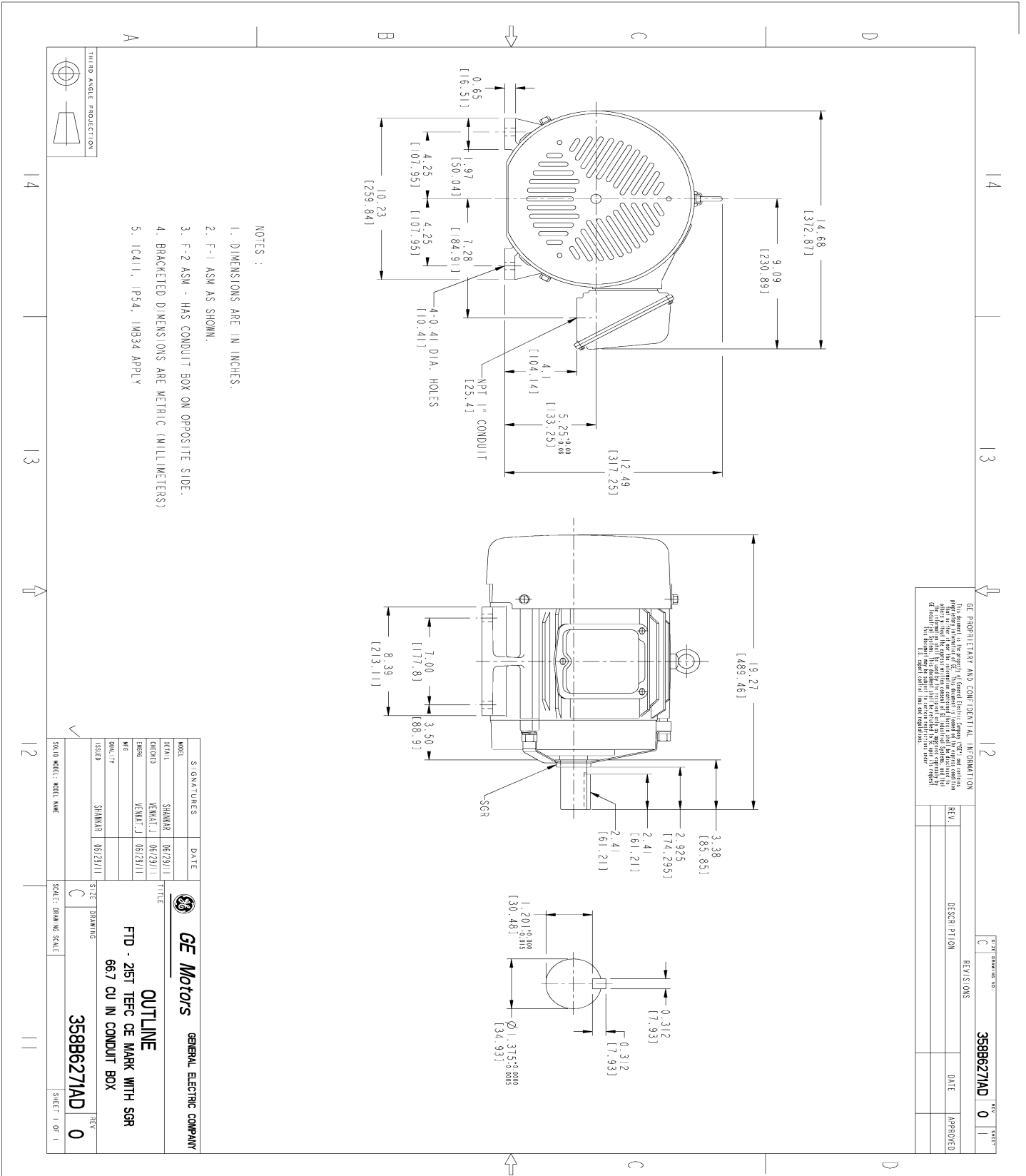
This motor is capable of two cold or one hot start with a maximum connected load inertia of 285 Lb-Ft Sq (12 Kg-meter Sq)at 100% voltage, where the load torque varies with the square of the speed. Acceleration time with maximum inertia and the above load type is 25 seconds. Safe stall time at 100% voltage is 78 seconds cold, 43 seconds hot. Rotor inertia is 1.16 Lb-Ft Sq (0.05 Kg-meter Sq).

Open Circuit A-C:	0.334	Short Circuit D-C:	0.011
Short Circuit A-C:	0.014	X/R Ratio:	4.157
Stator Slots:	48	Rotor Slots:	40

Speed Torque Current Curve (First Connection, First Speed)



Marks:



GE PROPRIETARY AND CONFIDENTIAL INFORMATION

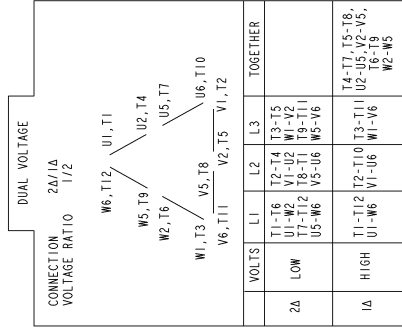
This document is the property of General Electric Company ("GE") and contains information that is confidential and/or proprietary to GE. It is not to be distributed, copied, or used in any manner without the prior written consent of GE. The information contained herein is for internal use only and is not to be used for any other purpose. The information contained herein is not to be used for any other purpose. The information contained herein is not to be used for any other purpose.

REV.	DESCRIPTION	DATE	APPROVED
0			

3588627IAD 0

Marks:

Connection Diagram
GEM2034E-FIG210



NAME:501452353 OBJECT:GEM2034E-FIG210 DATE:25-Feb-08 14:03:35

