

Product Information Packet

November 8, 2016

Data shown is for the current revision model #. Ensure your nameplate model # matches.

Model Number:	5KS184STE104A
Catalog Number:	M7504
Instruction Manual:	GEI-M1031
Connection Diagram:	GEM2034E-FIG1
Outline Drawing:	358B6270AB

Accessory Connection Diagrams			
Bearing Thermocouple:	None	Heater:	None
RTD:	None	Thermistor:	None
Thermostat:	None	Winding Thermocouple:	None
Bearing RTD:	None		

Table of Contents	
Specification	01
Performance Characteristics	02
Outline Drawing	03
Connection Drawing(s)	04

Marks:

MODEL NUMBER:	5KS184STE104A	Estimated Weight:	106 Lbs
Outline Drawing:	358B6270AB	Time Rating:	CONT
Connection Diagram:	GEM2034E-FIG1	Enclosure:	TEFC
Instruction Book:	GEI-M1031	Encl Construction:	SD
Design Code:	18AD0012B	Ambient Max(°C):	40
Type:	KS	Alt Ambient Max(°C):	--
Frame:	184T	Insulation Class:	F
Phases:	3	NEMA Design:	A
Poles:	2	Nominal Efficiency:	88.5 %
Output Power:	5HP 3.7KW	Guaranteed Efficiency:	86.5
RPM:	3520	3/4 Load Efficiency:	90.3
Voltage:	575	KVA Code:	K
Hertz:	60	Max KVAR:	1.1
Amps - FL:	4.6	Power Factor:	92.0
Service Factor:	1.15	Bearing - DE:	6207ZZC3
Alt Service Factor:	--	Bearing - ODE:	6206ZZC3

Enclosure is Totally Enclosed Fan-Cooled

Stamped Nameplate Notes:**Additional Information:**

2 POLE, TEFC, LRA: 41.3 AMPS.
 SOUND POWER : 88 DBA
 GREASE: SHELL ALVANIA R3 LITHIUM GREASE
 NO. OF MOTOR LEADS: 3
 CONDUIT BOX VOLUME (CU IN): 47.1
 CONDUIT BOX MATERIAL: CAST IRON
 SUITABLE FOR USE IN CLASS I DIVISION 2 LOCATIONS
 CLASS I DIVISION 2 GROUPS A,B,C,D T3C
 CLASS I ZONE 2 IIC T3C

Performance Characteristics

1st Winding 1st Connection

Design: 18AD0012B

Marks:

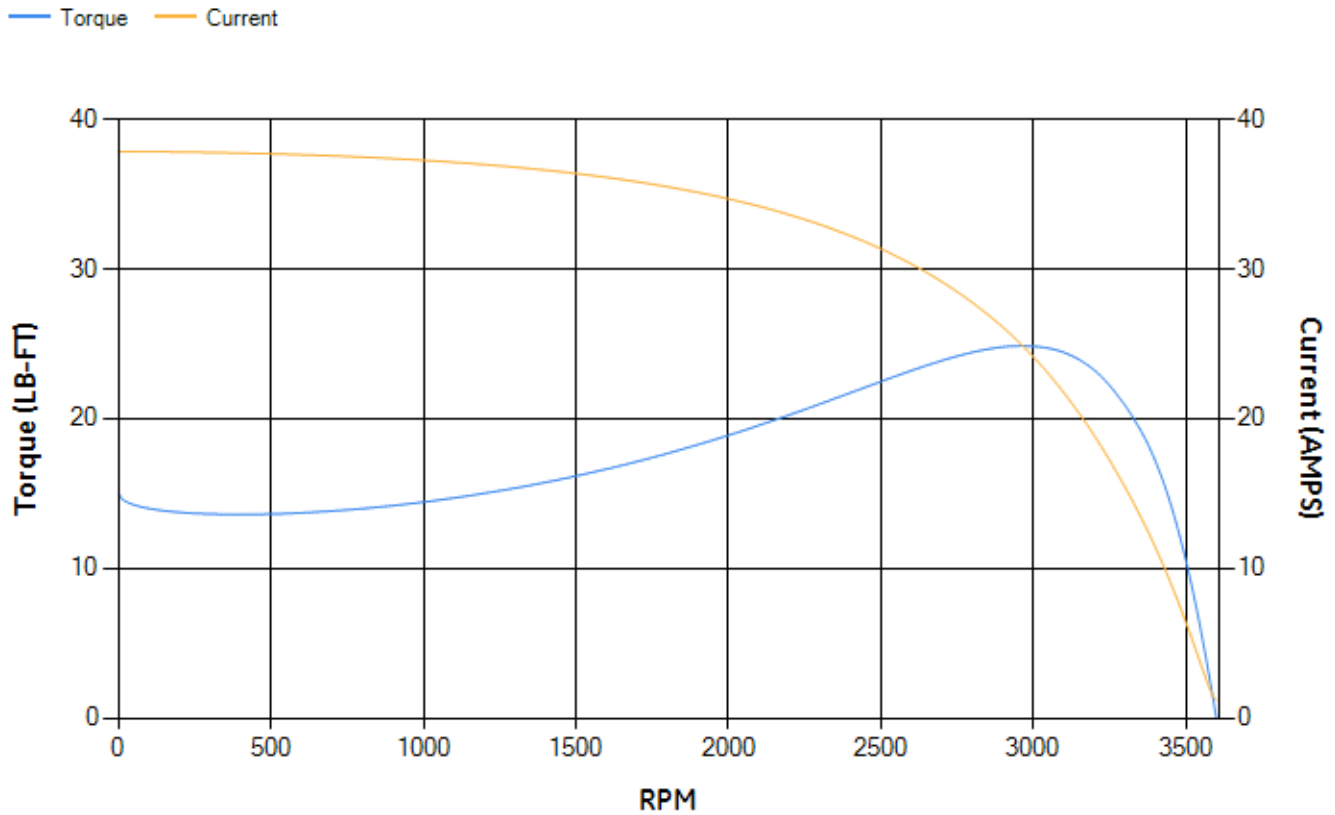
LOAD %	125.0	115.0	100.0	75.0	50.0	25.0	0.0
% EFF	87.06	87.86	89.13	90.27	90.64	87.8	0.00
% PF	93.5	93.26	92.61	90.26	84.16	65.54	8.75
AMPS	5.75	5.25	4.54	3.45	2.45	1.63	1.18

TORQ(FL)#FT	7.47	TORQ(LR)%FL	201.13	TORQ(BD)%FL	328.63
AMPS(LR)	37.86	PF AT START	0.57		

This motor is capable of two cold or one hot start with a maximum connected load inertia of 12 Lb-Ft Sq (0.51 Kg-meter Sq) at 100% voltage, where the load torque varies with the square of the speed. Acceleration time with maximum inertia and the above load type is 10 seconds. Safe stall time at 100% voltage is 25 seconds cold, 16 seconds hot. Rotor inertia is 0.19 Lb-Ft Sq (0.01 Kg-meter Sq).

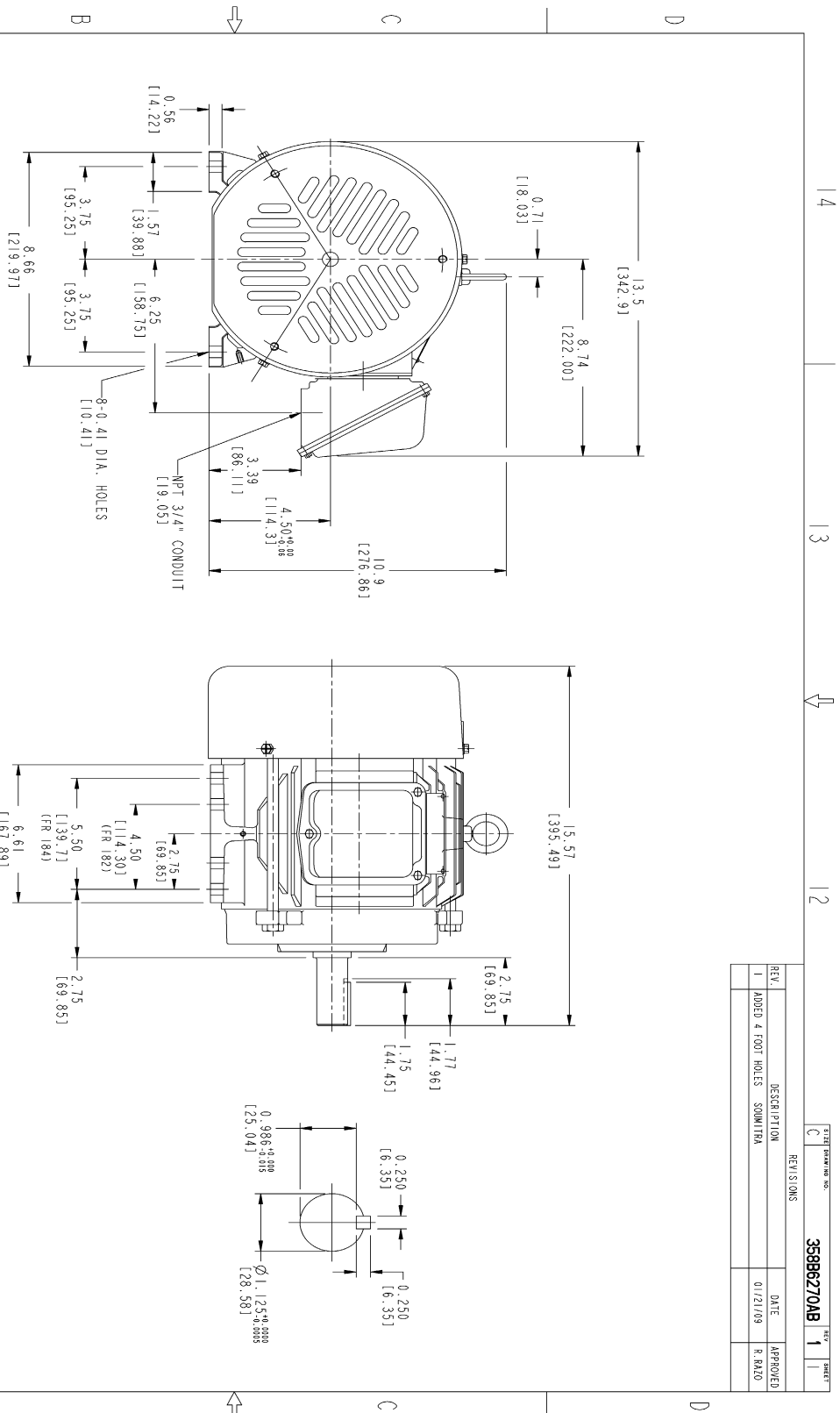
Open Circuit A-C:	0.435	Short Circuit D-C:	0.004
Short Circuit A-C:	0.01	X/R Ratio:	1.67
Stator Slots:	36	Rotor Slots:	28

Speed Torque Current Curve (First Connection, First Speed)

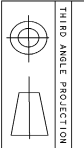


NAME:501452442 OBJECT:358B6270AB DATE:22-Jan-09 11:15:11

Marks:



- NOTES :
1. DIMENSIONS ARE IN INCHES.
 2. F-1 ASM AS SHOWN.
 3. F-2 ASM - HAS CONDUIT BOX ON OPPOSITE SIDE.
 4. BRACKETED DIMENSIONS ARE METRIC (MILLIMETERS)
 5. ICALL, IP54, IMB34 APPLY



Part must conform to SI 900000 Sect 4, Toxicity Procedure

FOR ADDITIONAL INFO REFER TO:		SIGNATURES		DATE	
REFLECTED DIMENSIONS	DETAIL				
UNLESS OTHERWISE SPECIFIED	SOONITRA			11/05/07	
DIMENSIONS ARE IN INCHES	SALTY			11/05/07	
TOLERANCE ON:	R. KOHNE			11/05/07	
2 PL DECIMALS ±	ISSUED			11/05/07	
3 PL DECIMALS ±	SOONITRA				
ANGLES ±					
FRACTIONS ±					
FINISH					
MATERIAL	SOLID MODEL MODEL NAME				

REV.	DESCRIPTION	DATE	APPROVED
1	ADDED 4 FOOT HOLES SOONITRA	01/21/09	R. PALO

GE Consumer & Industrial
GENERAL ELECTRIC COMPANY
OUTLINE
FTD - 82T/84T TERC CE MARK
471 CU IN CONDUIT BOX
358B6270AB
 SCALE: C
 SHEET 1 OF 1

Marks:

Connection Diagram
GEM2034E-FIG1

