

Product Information Packet

May 6, 2017

Data shown is for the current revision model #. Ensure your nameplate model # matches.

Model Number:	5KS364DAJ6008B
Catalog Number:	V4418
Instruction Manual:	GEK-95353
Connection Diagram:	GEM2034E-FIG19
Outline Drawing:	148CB36VMHKBCAA0001

Accessory Connection Diagrams			
Bearing Thermocouple:	None	Heater:	3027JE-1C
RTD:	None	Thermistor:	None
Thermostat:	None	Winding Thermocouple:	None
Bearing RTD:	None		

Table of Contents

Specification	01
Performance Characteristics	02
Outline Drawing	03
Connection Drawing(s)	04
Spare parts	05



Marks:

MODEL NUMBER:	5KS364DAJ6008B	Estimated Weight:	800 Lbs
Outline Drawing:	148CB36VMHKBCAA0001	Time Rating:	CONT
Connection Diagram:	GEM2034E-FIG19	Enclosure:	WPI
Instruction Book:	GEK-95353	Encl Construction:	OPEN
Design Code:	36BD1236AA	Ambient Max(°C):	40
Type:	KS	Alt Ambient Max(°C):	--
Frame:	L364TP16	Insulation Class:	H
Phases:	3	NEMA Design:	B
Poles:	4	Nominal Efficiency:	95.0 %
Output Power:	60HP 44.4KW	Guaranteed Efficiency:	94.1
RPM:	1785	3/4 Load Efficiency:	--
Voltage:	460	KVA Code:	G
Hertz:	60	Max KVAR:	22.3
Amps - FL:	73.4	Power Factor:	81.0
Service Factor:	1.15	Bearing - DE:	6212C3
Alt Service Factor:	--	Bearing - ODE:	235A2523AD01

Enclosure is Weather Protected One

Stamped Nameplate Notes:

HTR LDS HE1-HE2 115V 100W
 ROT CCW FACING ODE LEAD/PH SEQ 1-2-3/1-2-3
 INVERTER DUTY PER NEMA MG1 PART 31
 ALTERNATE RATING FOR PWM CONTROL:1.0SF 40C AMBIENT
 VAR TORQUE RANGE 5-60 HZ
 UPPER BRG LUBE OIL: 3.7 QTS
 0 DEG C TO 40 DEG C : ISO 32(MINERAL OR SYNTHETIC)
 -15 DEG C TO 0 DEG C : ISO 32 SYNTHETIC
 SUITABLE FOR 50 HP, 380V, 50 HZ WITH
 73.2 AMPS AND 1485 RPM AT 1.00 SF;

Additional Information:

4P, VERT HOLLOW SHAFT HIGH THRUST (1D)
 C/BOX 346 CU IN - 3.00" NPT
 OIL RESISTANT SLEEVING ON LEADS
 115V HTR LDS TO MAIN CONDUIT BOX
 BEARING LIFE 8760 HRS AT 6244 LB THRUST
 PART WINDING START
 CG:15.23 IN FROM P-BASE FACE, STAT DEF:0.0033 IN
 RCF:3300 CPM AT C/BOX SIDE, 3270 CPM AT
 90 DEG FROM C/ BOX SIDE
 NON-REVERSE BALL CARRIER
 COUPLING NOT INCLUDED IN BOM, WILL BE
 ORDERED SEPERATELY;
 SPECIAL BALANCE;

Performance Characteristics

1st Winding 1st Connection

Design: 36BD1236AA

Marks:

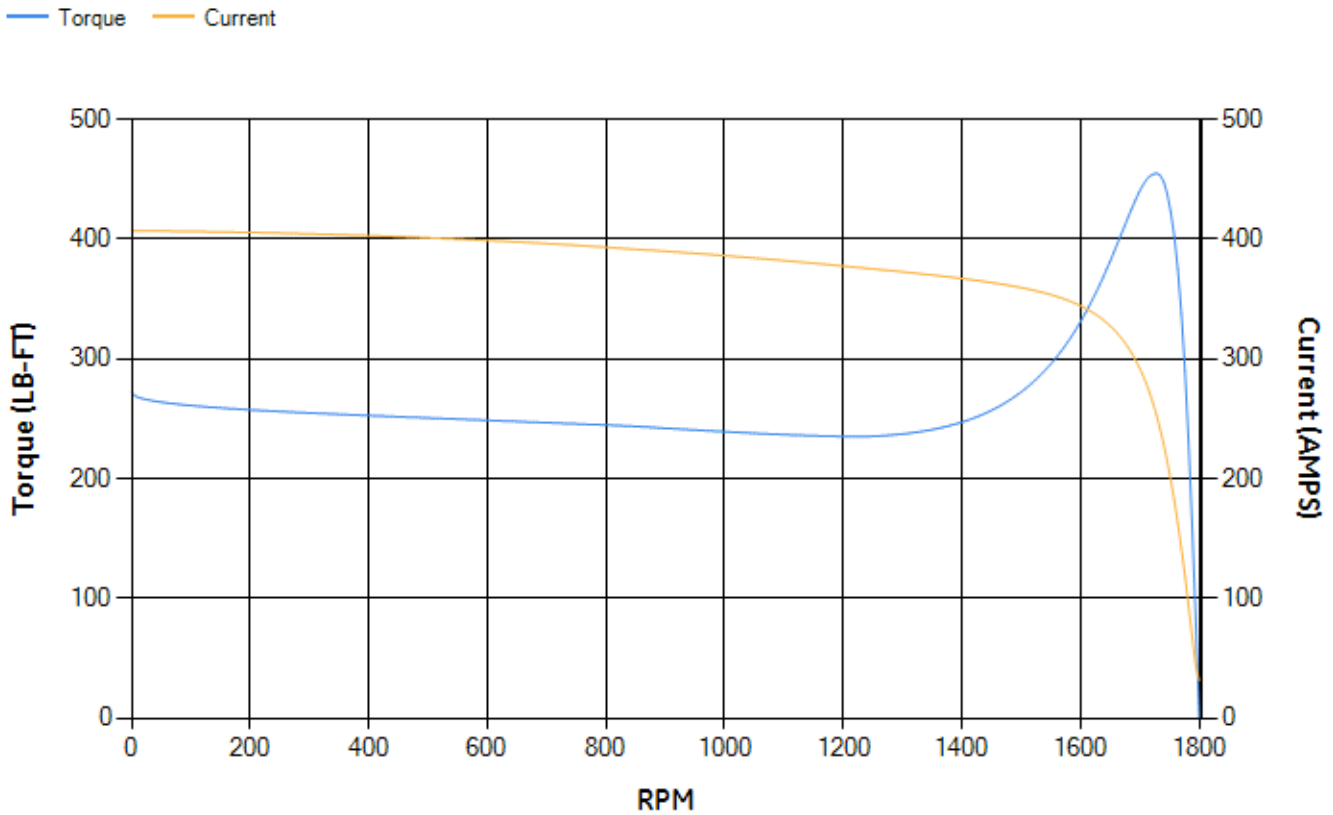
LOAD %	125.0	115.0	100.0	75.0	50.0	25.0	0.0
% EFF	94.17	94.35	94.75	94.58	93.84	90.38	0.00
% PF	83.32	82.68	81.17	76.28	65.77	43.48	4.06
AMPS	89.47	82.78	72.84	58.38	45.49	35.72	31.04

TORQ(FL)#FT	176.57	TORQ(LR)%FL	153.94	TORQ(BD)%FL	256.9
AMPS(LR)	406.95	PF AT START	0.3		

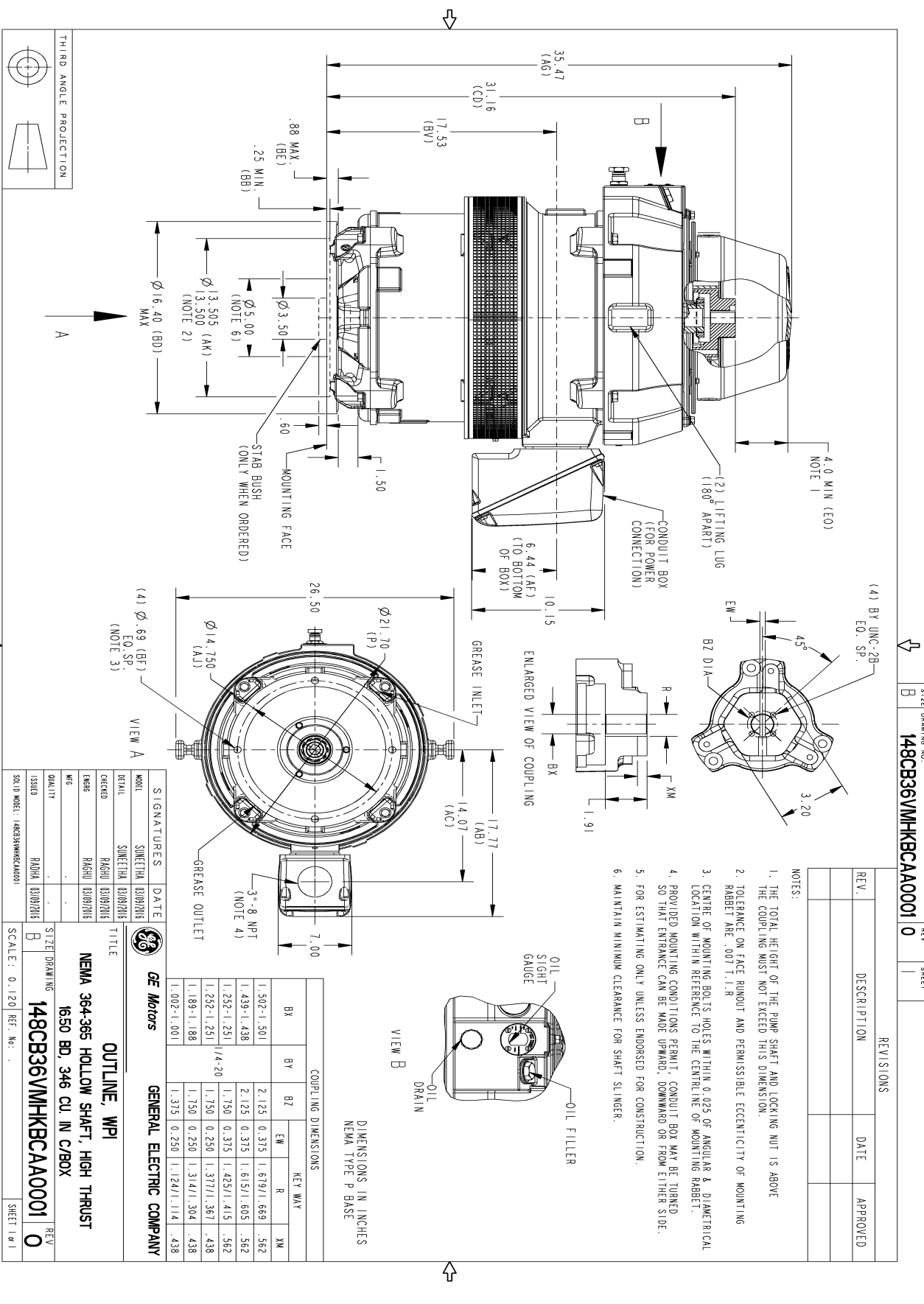
This motor is capable of two cold or one hot start with a maximum connected load inertia of 1532 Lb-Ft Sq (64.5 Kg-meter Sq)at 100% voltage, where the load torque varies with the square of the speed. Acceleration time with maximum inertia and the above load type is 44 seconds. Safe stall time at 100% voltage is 74 seconds cold, 57 seconds hot. Rotor inertia is 11.21 Lb-Ft Sq (0.47 Kg-meter Sq).

Open Circuit A-C:	0.66	Short Circuit D-C:	0.026
Short Circuit A-C:	0.042	X/R Ratio:	9.844
Stator Slots:	60	Rotor Slots:	50

Speed Torque Current Curve (First Connection, First Speed)

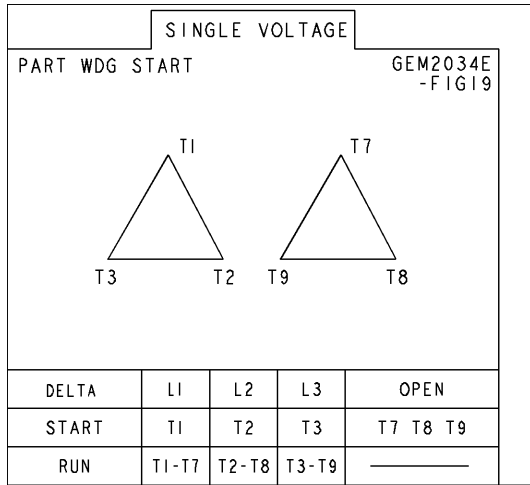


Marks:



Marks:

Connection Diagram
GEM2034E-FIG19



Heater Connection
3027JE-1C



End shield Assembly		
Part Description	DE Side Part#	ODE Side Part#
End Shield	115E7255AA1	115E7259LA1
Bearing	235A2509BE01	235A2523AD01
Slinger/Inproseal	235A2300FM1	

Fan & Fan Cover Assembly	
Part Description	Part#
Fan	
Fan Cover	161C1053AA1

Conduit & Accessories Box Assembly	
Part Description	Part#
Conduit Box	149C4429AA2

Mechanical Accessories	
Part Description	Part#
Brake	
Tachometer	

