

# Product Information Packet

November 9, 2016

Data shown is for the current revision model #. Ensure your nameplate model # matches.

<b>Model Number:</b>	<b>5KS254STE105A</b>
<b>Catalog Number:</b>	<b>M7707</b>
<b>Instruction Manual:</b>	GEI-M1031
<b>Connection Diagram:</b>	GEM2034E-FIG210
<b>Outline Drawing:</b>	358B6272AA

Accessory Connection Diagrams			
<b>Bearing Thermocouple:</b>	None	<b>Heater:</b>	None
<b>RTD:</b>	None	<b>Thermistor:</b>	None
<b>Thermostat:</b>	None	<b>Winding Thermocouple:</b>	None
<b>Bearing RTD:</b>	None		

Table of Contents	
Specification	01
Performance Characteristics	02
Outline Drawing	03
Connection Drawing(s)	04



**Marks:**

<b>MODEL NUMBER:</b>	<b>5KS254STE105A</b>	<b>Estimated Weight:</b>	317 Lbs
<b>Outline Drawing:</b>	358B6272AA	<b>Time Rating:</b>	CONT
<b>Connection Diagram:</b>	GEM2034E-FIG210	<b>Enclosure:</b>	TEFC
<b>Instruction Book:</b>	GEI-M1031	<b>Encl Construction:</b>	SD
<b>Design Code:</b>	25AD0015A	<b>Ambient Max(°C):</b>	40
<b>Type:</b>	KS	<b>Alt Ambient Max(°C):</b>	--
<b>Frame:</b>	254T	<b>Insulation Class:</b>	F
<b>Phases:</b>	3	<b>NEMA Design:</b>	A
<b>Poles:</b>	2	<b>Nominal Efficiency:</b>	91 %
<b>Output Power:</b>	15HP 11.1KW	<b>Guaranteed Efficiency:</b>	89.5
<b>RPM:</b>	3530	<b>3/4 Load Efficiency:</b>	90.3
<b>Voltage:</b>	230/460	<b>KVA Code:</b>	H
<b>Hertz:</b>	60	<b>Max KVAR:</b>	3.2
<b>Amps - FL:</b>	33.6/16.8	<b>Power Factor:</b>	92
<b>Service Factor:</b>	1.15	<b>Bearing - DE:</b>	6310ZZ
<b>Alt Service Factor:</b>	--	<b>Bearing - ODE:</b>	6208ZZ

**Enclosure is Totally Enclosed Fan-Cooled**

---

**Stamped Nameplate Notes:**

USABLE AT 200V @ 15 HP,38.4 AMPS @ 1.0 SF

LRA: 239.6/119.8

50HZ DATA: 10 HP, 200/400V, 30/15 AMPS @ 1.15 SF

50HZ DATA: 15 HP,200/400V,38.6/19.3 AMPS @ 1.00 SF

GREASE TYPE: SHELL ALVANIA R3 LITHIUM GREASE

**Additional Information:**

CONDUIT BOX MATERIAL: CAST IRON

SUITABLE FOR USE IN CLASS I DIVISION 2 LOCATIONS

CLASS I DIVISION 2 GROUPS A,B,C,D T3C

CLASS I ZONE 2 IIC T3C



**Performance Characteristics**

1st Winding 1st Connection

**Design: 25AD0015A**

Marks:

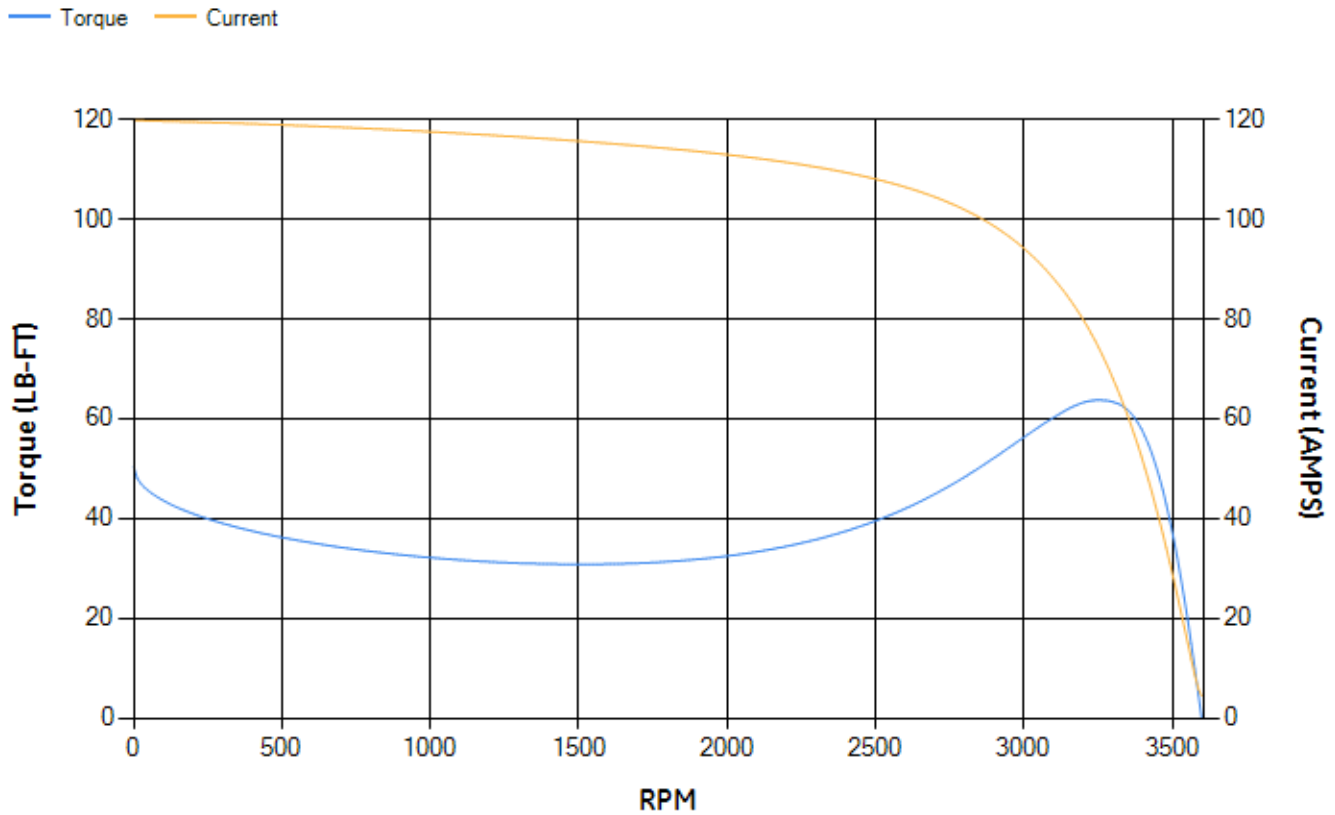
LOAD %	125.0	115.0	100.0	75.0	50.0	25.0	0.0
% EFF	89.22	89.62	90.28	90.34	89.34	84.07	0.00
% PF	92.52	92.37	91.88	89.85	84.36	67.39	13.46
AMPS	21.26	19.5	16.93	12.97	9.31	6.19	4.39

TORQ(FL)#FT	22.31	TORQ(LR)%FL	225.94	TORQ(BD)%FL	281.65
AMPS(LR)	119.79	PF AT START	0.35		

This motor is capable of two cold or one hot start with a maximum connected load inertia of 90 Lb-Ft Sq (3.79 Kg-meter Sq) at 100% voltage, where the load torque varies with the square of the speed. Acceleration time with maximum inertia and the above load type is 33 seconds. Safe stall time at 100% voltage is 56 seconds cold, 39 seconds hot. Rotor inertia is 1.06 Lb-Ft Sq (0.04 Kg-meter Sq).

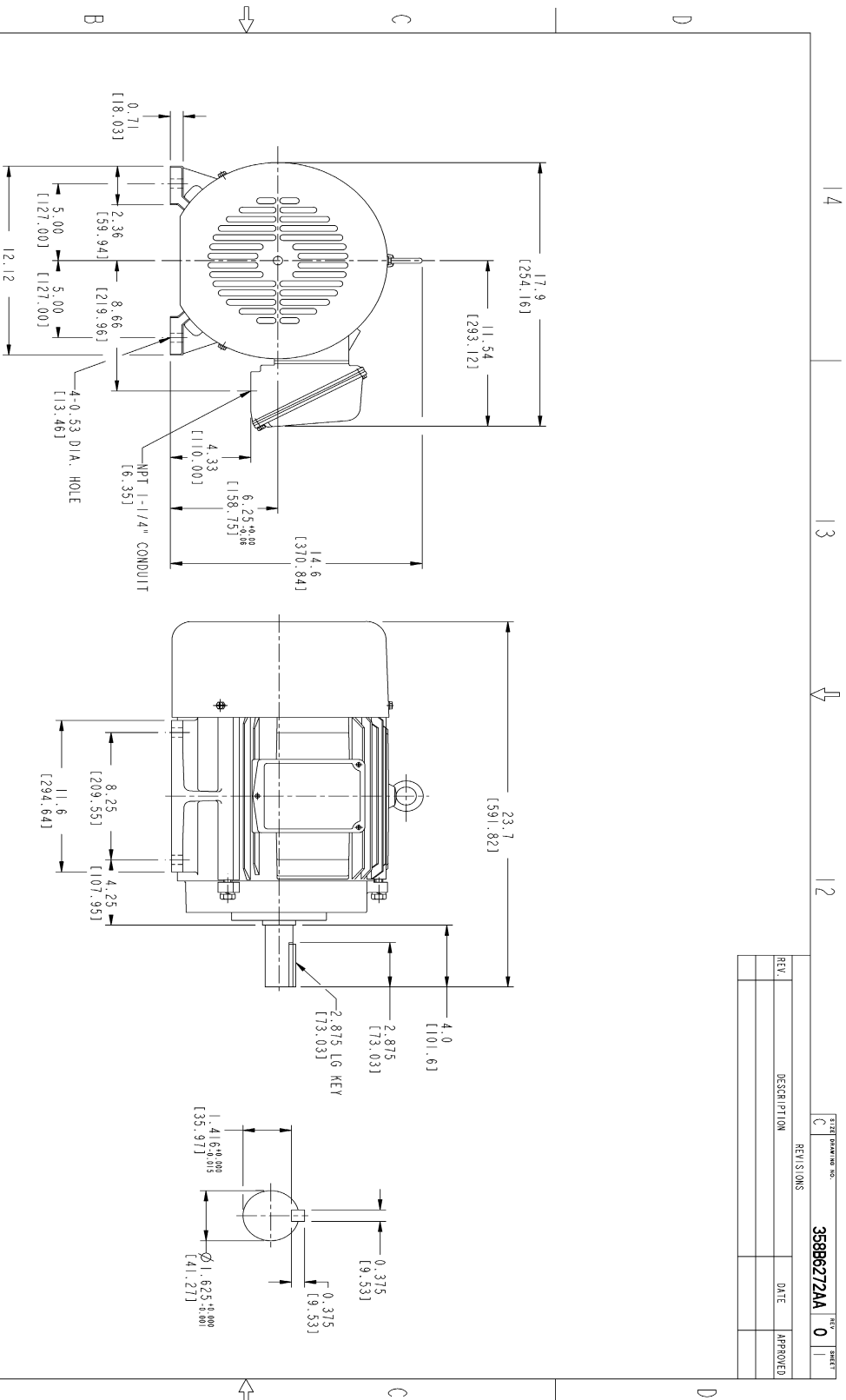
Open Circuit A-C:	0.525	Short Circuit D-C:	0.014
Short Circuit A-C:	0.016	X/R Ratio:	5.229
Stator Slots:	36	Rotor Slots:	44

Speed Torque Current Curve (First Connection, First Speed)



NAME:501291659 OBJECT:358B6272AA DATE:05-Dec-07 10:14:57

Marks:



NOTES :

1. DIMENSIONS ARE IN INCHES.
2. F-1 ASM AS SHOWN.
3. F-2 ASM - HAS CONDUIT BOX ON OPPOSITE SIDE.
4. BRACKETED DIMENSIONS ARE METRIC (MILLIMETERS)
5. IC411, IP54, IMB34 APPLY

THIRD ANGLE PROJECTION



Part must conform to SI 9000000 Sect. 4, Toxicity Procedure

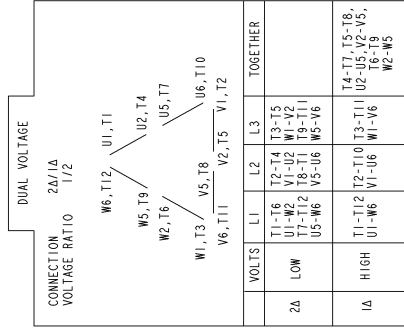
FOR ADDITIONAL INFO REFER TO:	SIGNATURES	DATE
APPROVED		
DESIGNED		
DRAWN		
CHECKED		
TOLERANCE ON DIMENSIONS IN INCHES		
TOLERANCE ON DIMENSIONS IN MILLIMETERS		
2 PL DECIMALS ±		
3 PL DECIMALS ±		
ANGLES ±		
FRACTIONS ±		
FINISH		

MATERIAL	SOLID MODEL MODEL NAME
<p><b>GE Consumer &amp; Industrial</b> GENERAL ELECTRIC COMPANY</p> <p><b>OUTLINE</b></p> <p><b>FID - 254T TERC CE MARK</b></p> <p><b>100S CU IN CONDUIT BOX</b></p>	
SCALE: C	SHEET DRAWING
358B6272AA	REV 0
SHEET 1 OF 1	

REV.	DESCRIPTION	DATE	APPROVED

Marks:

**Connection Diagram**  
**GEM2034E-FIG210**



NAME:501452353 OBJECT:GEM2034E-FIG210 DATE:25-Feb-08 14:03:35