

Product Information Packet

May 15, 2014

Data shown is for the current revision model #. Ensure your nameplate model # matches.

Model Number:	5KS184ATE205F2RG3
Catalog Number:	E7059
Instruction Manual:	GEI-M1023
Connection Diagram:	GEM2034E-FIG3
Outline Drawing:	358B6214AB

Accessory Connection Diagrams			
Bearing Thermocouple:	None	Heater:	None
RTD:	None	Thermistor:	None
Thermostat:	None	Winding Thermocouple:	None
Bearing RTD:	None		

Table of Contents	
Specification	01
Performance Characteristics	02
Outline Drawing	03
Connection Drawing(s)	04

Marks:

MODEL NUMBER:	5KS184ATE205F2RG3	Estimated Weight:	91 Lbs
Outline Drawing:	358B6214AB	Time Rating:	CONT
Connection Diagram:	GEM2034E-FIG3	Enclosure:	DP
Instruction Book:	GEI-M1023	Encl Construction:	OPEN
Design Code:	18AD1003A	Ambient Max(°C):	-20/40
Type:	KS	Alt Ambient Max(°C):	--
Frame:	184T	Insulation Class:	F
Phases:	3	NEMA Design:	A
Poles:	4	Nominal Efficiency:	89.5 %
Output Power:	5HP 3.7KW	Guaranteed Efficiency:	87.5 %
RPM:	1750	3/4 Load Efficiency:	--
Voltage:	230/460	KVA Code:	K
Hertz:	60	Max KVAR:	1.7
Amps - FL:	12.4/6.2	Power Factor:	84.5
Service Factor:	1.15	Bearing - DE:	6207ZZ
Alt Service Factor:	--	Bearing - ODE:	6206ZZ

Enclosure is Dripproof

Stamped Nameplate Notes:**Additional Information:**

MADE FROM MODEL 5KS184ATE205F2
 ADD AEGIS GROUND RING
 MOD AMSTUTZ 15-NOV-2011

Performance Characteristics

1st Winding 1st Connection

Design: 18AD1003A

Marks:

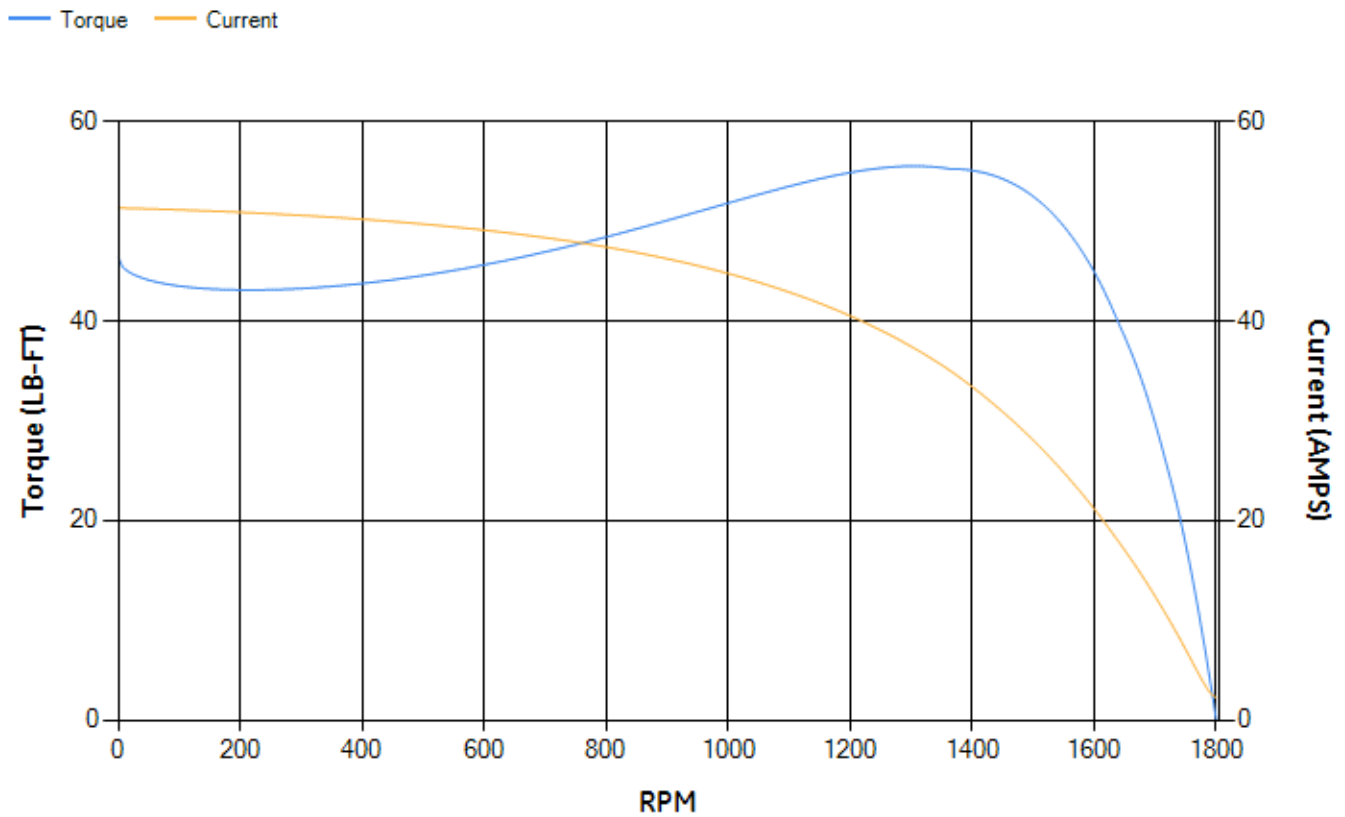
LOAD %	125.0	115.0	100.0	75.0	50.0	25.0	0.0
% EFF	88.27	88.99	90.11	90.98	91.04	87.84	0.00
% PF	86.66	86.23	85.08	81.04	71.66	49.67	5.84
AMPS	7.65	7.01	6.1	4.76	3.59	2.68	2.25

TORQ(FL)#FT	15.04	TORQ(LR)%FL	308.17	TORQ(BD)%FL	361.33
AMPS(LR)	51.32	PF AT START	0.51		

This motor is capable of two cold or one hot start with a maximum connected load inertia of 105 Lb-Ft Sq (4.42 Kg-meter Sq)at 100% voltage, where the load torque varies with the square of the speed. Acceleration time with maximum inertia and the above load type is 14 seconds. Safe stall time at 100% voltage is 40 seconds cold, 24 seconds hot. Rotor inertia is 0.46 Lb-Ft Sq (0.02 Kg-meter Sq).

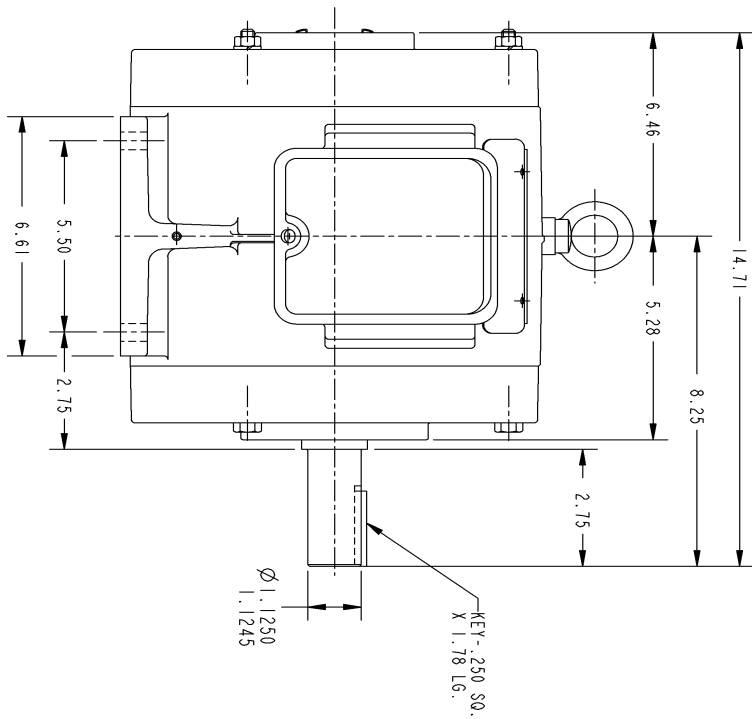
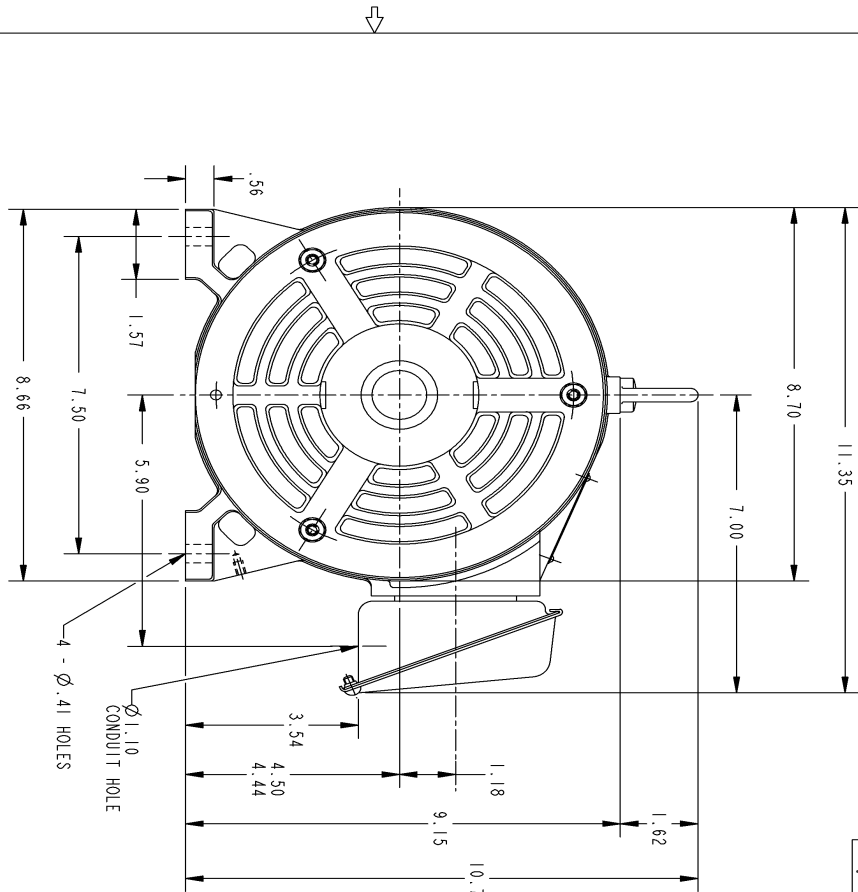
Open Circuit A-C:	0.235	Short Circuit D-C:	0.007
Short Circuit A-C:	0.008	X/R Ratio:	2.51
Stator Slots:	36	Rotor Slots:	28

Speed Torque Current Curve (First Connection, First Speed)



NAME:501452442 OBJECT:358B6214AB DATE:24-May-07 23:02:33

Marks:



SIZE: DRAWING FOR: **358B6214AB**
 GE PROPRIETARY INNOVATION

REV.	DESCRIPTION	DATE	APPROVED
1	ISAAC 07-0770	05/02/07	R. KOHNE

THIRD ANGLE PROJECTION



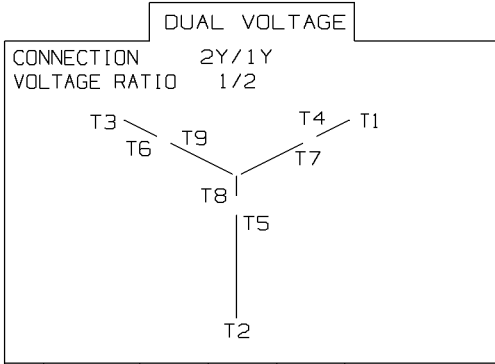
NOTES :

1. CONDUIT BOX MAY BE PLACED WITH THE ENTRANCE DOWN, UP OR ON EITHER SIDE.
2. F-1 ASM AS SHOWN.
3. F-2 ASM - HAS CONDUIT BOX ON OPPOSITE SIDE.

UNLESS OTHERWISE SPECIFIED:		SIGNATURES		DATE	
DIMENSIONS ARE IN INCHES		DRAWN		P. RAJU 03/28/03	
TOLERANCE ON:		CHECKED		03/27/03	
2 PL DECIMALS ±		ENGR			
3 PL DECIMALS ±		ISSUED		03/27/03	
ANGLES ± 1°		APPLIED PRACTICES			
MATERIAL:		SIZE/DRAWING		REV.	
		B		1	
		SCALE: DRAWING SCALE		SHEET 1 OF 1	
		GENERAL ELECTRIC COMPANY			
		Fort Wayne, Indiana			
		OUTLINE			
		184T - OPEN DRIP PROOF			
		358B6214AB			
		DISTRIBUTION:			

Marks:

Connection Diagram
GEM2034E-FIG3



	VOLTS	L1	L2	L3	TOGETHER
2Y	LOW	T1-T7	T2-T8	T3-T9	T4-T5-T6
1Y	HIGH	T1	T2	T3	T4-T7, T5-T8, T6-T9