

Product Information Packet

November 7, 2016

Data shown is for the current revision model #. Ensure your nameplate model # matches.

Model Number:	5KS184ATE204A
Catalog Number:	E7808
Instruction Manual:	GEI-M1023
Connection Diagram:	GEM2034E-FIG7
Outline Drawing:	358B6214AB

Accessory Connection Diagrams

Bearing Thermocouple:	None	Heater:	None
RTD:	None	Thermistor:	None
Thermostat:	None	Winding Thermocouple:	None
Bearing RTD:	None		

Table of Contents

Specification	01
Performance Characteristics	02
Outline Drawing	03
Connection Drawing(s)	04



Marks:

MODEL NUMBER:	5KS184ATE204A	Estimated Weight:	91 Lbs
Outline Drawing:	358B6214AB	Time Rating:	CONT
Connection Diagram:	GEM2034E-FIG7	Enclosure:	DP
Instruction Book:	GEI-M1023	Encl Construction:	OPEN
Design Code:	18AD1008B	Ambient Max(°C):	40
Type:	KS	Alt Ambient Max(°C):	--
Frame:	184T	Insulation Class:	F
Phases:	3	NEMA Design:	A
Poles:	4	Nominal Efficiency:	89.5 %
Output Power:	5HP 3.7KW	Guaranteed Efficiency:	87.5
RPM:	1740	3/4 Load Efficiency:	90.5
Voltage:	575	KVA Code:	K
Hertz:	60	Max KVAR:	1.7
Amps - FL:	5	Power Factor:	81.5
Service Factor:	1.15	Bearing - DE:	6207ZZ
Alt Service Factor:	--	Bearing - ODE:	6206ZZ

Enclosure is Dripproof

Stamped Nameplate Notes:**Additional Information:**

4 POLE DRIP PROOF
 CONDUIT BOX MATERIAL: STAMPED STEEL
 CONDUIT BOX VOL: 30.2 CU IN
 NO. OF MOTOR LEADS: 3
 GREASE TYPE: SHELL ALVANIA R3 LITHIUM
 SOUND POWER DATA: 70.0
 INVERTER DUTY PER NEMA MG1 PART 31
 FOR VARIABLE TORQUE LOADS

Performance Characteristics

1st Winding 1st Connection

Design: 18AD1008B

Marks:

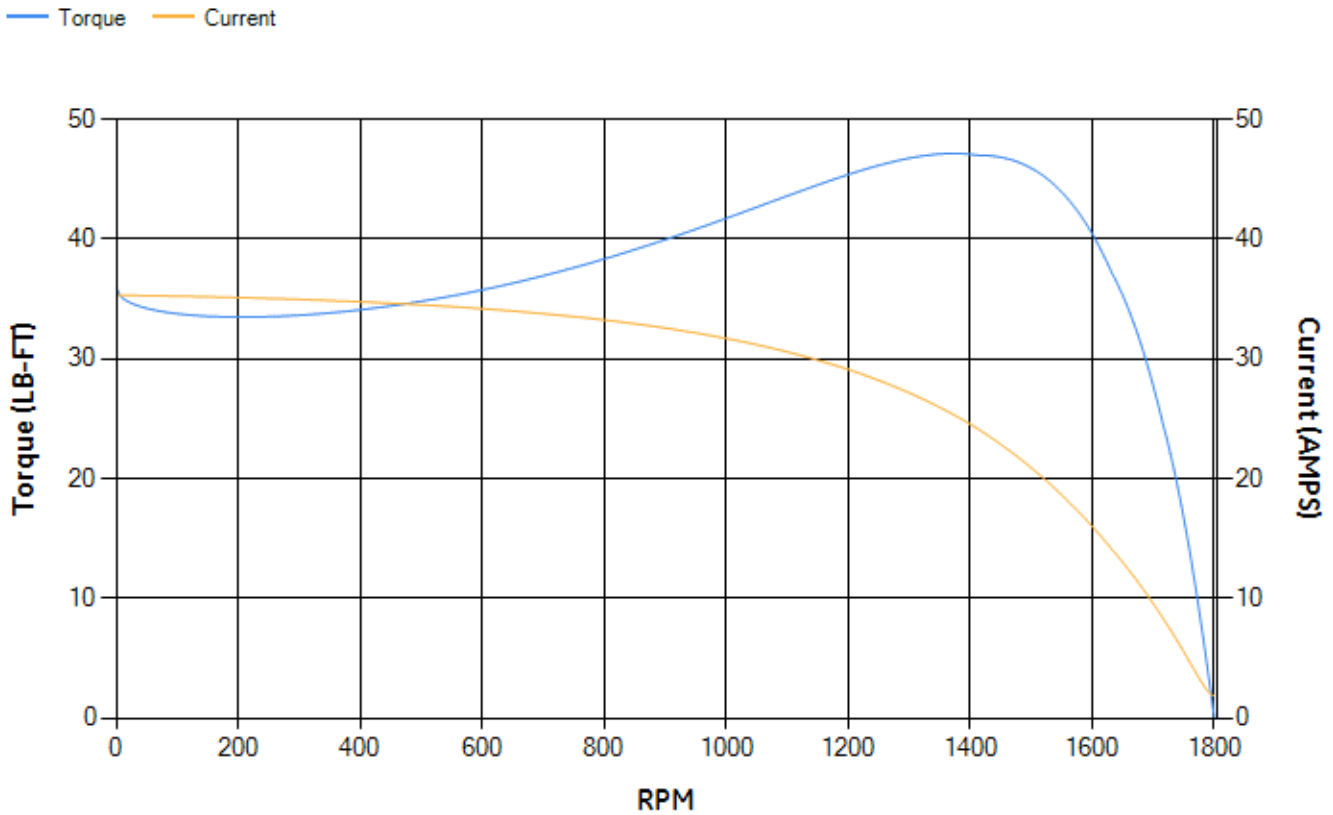
LOAD %	125.0	115.0	100.0	75.0	50.0	25.0	0.0
% EFF	87.46	88.29	89.54	90.55	90.69	87.47	0.00
% PF	84.49	84.16	83.13	79.22	70.04	48.67	5.9
AMPS	6.33	5.79	5.03	3.91	2.95	2.2	1.82

TORQ(FL)#FT	15.07	TORQ(LR)%FL	238.37	TORQ(BD)%FL	307.52
AMPS(LR)	35.31	PF AT START	0.45		

This motor is capable of two cold or one hot start with a maximum connected load inertia of 112 Lb-Ft Sq (4.72 Kg-meter Sq)at 100% voltage, where the load torque varies with the square of the speed. Acceleration time with maximum inertia and the above load type is 19 seconds. Safe stall time at 100% voltage is 58 seconds cold, 33 seconds hot. Rotor inertia is 0.46 Lb-Ft Sq (0.02 Kg-meter Sq).

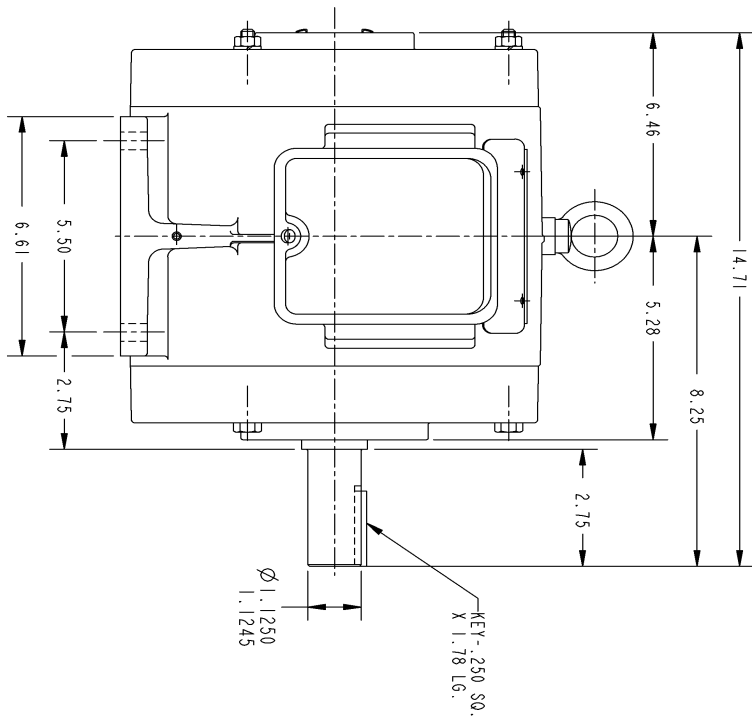
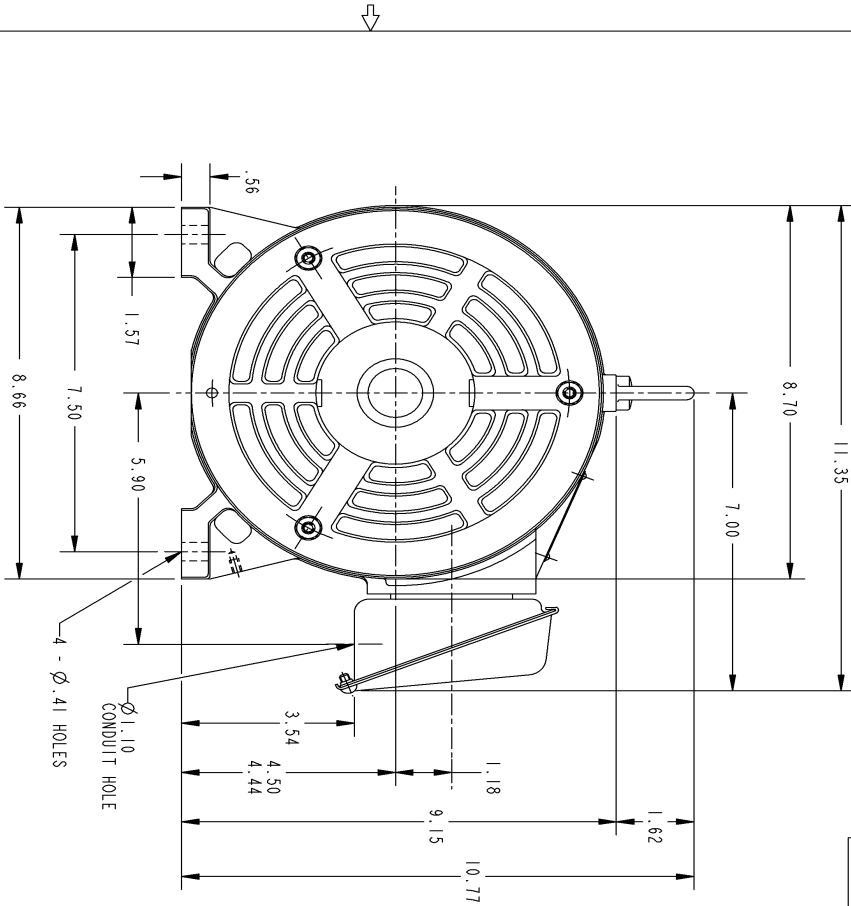
Open Circuit A-C:	0.226	Short Circuit D-C:	0.008
Short Circuit A-C:	0.01	X/R Ratio:	3.012
Stator Slots:	36	Rotor Slots:	28

Speed Torque Current Curve (First Connection, First Speed)



NAME:501452442 OBJECT:358B6214AB DATE:24-May-07 23:02:33

Marks:

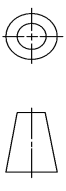


THIS DRAWING IS THE PROPERTY OF GENERAL ELECTRIC COMPANY (GEC) AND CONTAINS PROPRIETARY INFORMATION. IT IS TO BE KEPT IN CONFIDENCE AND IS NOT TO BE REPRODUCED OR TRANSMITTED IN ANY FORM OR BY ANY MEANS, ELECTRONIC OR MECHANICAL, INCLUDING PHOTOCOPYING, RECORDING, OR BY ANY INFORMATION STORAGE AND RETRIEVAL SYSTEM. THIS DRAWING SHALL BE RETURNED TO GEC UPON 15 WORKING DAYS AFTER THE DATE OF ISSUANCE UNLESS OTHERWISE SPECIFIED IN WRITING BY GEC. © 2007 GEC

SIZE: DRAWING FOR B 358B6214AB GE PROPRIETARY INNOVATION

REV.	DESCRIPTION	DATE	APPROVED
1	ISAAC 07-0770	05/02/07	R. KOHNE

THIRD ANGLE PROJECTION



NOTES :

1. CONDUIT BOX MAY BE PLACED WITH THE ENTRANCE DOWN, UP OR ON EITHER SIDE.
2. F-1 ASM AS SHOWN.
3. F-2 ASM - HAS CONDUIT BOX ON OPPOSITE SIDE.

UNLESS OTHERWISE SPECIFIED:		SIGNATURES		DATE	
DIMENSIONS ARE IN INCHES		DRWN	P. RAJU	03/28/03	
TOLERANCE ON:		CHECKED	PRABHAKAR	03/27/03	
2 PL DECIMALS ±		ENGR			
3 PL DECIMALS ±		ISSUED	PRABHAKAR	03/27/03	
ANGLES ± 1°		APPLIED PRACTICES			
MATERIAL:		SIZE/DRAWING	B	358B6214AB	REV. 1
SCALE: DRAWING SCALE		GENERAL ELECTRIC COMPANY Fort Wayne, Indiana			
DISTRIBUTION:		OUTLINE 184T - OPEN DRIP PROOF			

SHEET 1 OF 1

Marks:

Connection Diagram
GEM2034E-FIG7

