

Product Information Packet

November 8, 2016

Data shown is for the current revision model #. Ensure your nameplate model # matches.

Model Number:	5KS449XAA337D2
Catalog Number:	M8947
Instruction Manual:	GEI-56128
Connection Diagram:	GEM2034E-FIG8
Outline Drawing:	239C6800YS

Accessory Connection Diagrams			
Bearing Thermocouple:	None	Heater:	None
RTD:	None	Thermistor:	None
Thermostat:	None	Winding Thermocouple:	None
Bearing RTD:	None		

Table of Contents

Specification	01
Performance Characteristics	02
Outline Drawing	03
Connection Drawing(s)	04
Spare parts	05



Marks:

MODEL NUMBER:	5KS449XAA337D2	Estimated Weight:	3200 Lbs
Outline Drawing:	239C6800YS	Time Rating:	CONT
Connection Diagram:	GEM2034E-FIG8	Enclosure:	TEFC
Instruction Book:	GEI-56128	Encl Construction:	841
Design Code:	49BD3064A	Ambient Max(°C):	40
Type:	KS	Alt Ambient Max(°C):	--
Frame:	449T	Insulation Class:	H
Phases:	3	NEMA Design:	B
Poles:	6	Nominal Efficiency:	95.8 %
Output Power:	250HP 185KW	Guaranteed Efficiency:	95.4
RPM:	1190	3/4 Load Efficiency:	96.2
Voltage:	460	KVA Code:	G
Hertz:	60	Max KVAR:	79.0
Amps - FL:	294.0	Power Factor:	83.0
Service Factor:	1.15	Bearing - DE:	6318ZC3
Alt Service Factor:	--	Bearing - ODE:	6318ZC3

Enclosure is Totally Enclosed Fan-Cooled

Stamped Nameplate Notes:

IEEE-STD-841-2009
 FOR DIRECT COUPLED LOAD ONLY
 DE BRG 90BC03JP3, ODE BRG 90BC03JP3
 STAMP NP249A5564P051 AS BELOW:
 MODEL:5KS449XAA337D2 S/N: XXX
 CSA CERTIFIED CSA09.2216219 FOR EX NA IIC 200 C GC
 CL 1 ZONE2 AEX NA IIC 200C;CL 1 DIV2 GRP ABCD 200C
 IN -25C <= AMB <= 40C, 1.0 SF ON SINE-WAVE PWR
 SURF TEMP 260C AT 1.15SF ON SINE-WAVE PWR
 OR 200C VT OR 230C CT OR 200C CHP PWM CONTROL
 ALTERNATE RATING FOR PWM CONTROL 1.0SF 40C AMB
 VT 0-60 HZ, CT 45-60 HZ, CHP 60-90 HZ.

Additional Information:

6P - T EXTN - SPLIT LEAD
 PAINTED FRAME ID & SHAFT,
 FAN COVER INSIDE & ODE E/S OUTSIDE
 1260 CU IN - 2(4.00" NPT) WITH DRAIN HOLES
 C/B GRD PLATE
 INPRO SEAL BOTH ENDS
 OIL RESISTANT SLEEVING ON LEADS
 .0015" TIR SHAFT RUNOUT
 ROUTINE TEST REPORT AND 5 POINT VIBRATION TEST
 REPORT INCLUDED IN C/B
 COPPER WASHER UNDER HEADS OF BEARING CAP BOLTS,
 APPLY TITE-SEAL (A50CD427A) ON BEARING CAP SCREWS,
 RABBETS AND PLUG THREADS.



GROUND PAD
F1 MOUNTING

Performance Characteristics

1st Winding 1st Connection

Design: 49BD3064A

Marks:

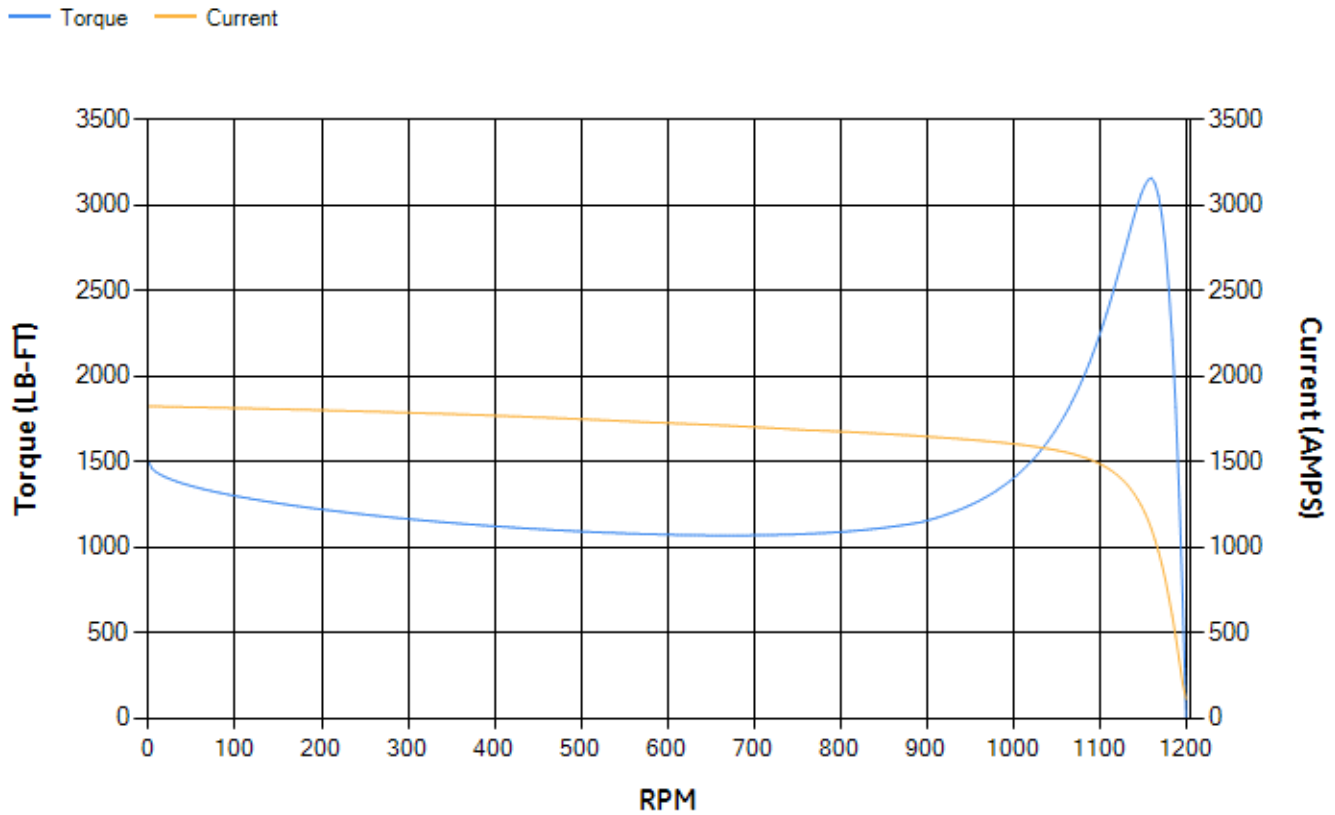
LOAD %	125.0	115.0	100.0	75.0	50.0	25.0	0.0
% EFF	95.35	95.58	96.07	96.16	96.01	94.26	0.00
% PF	84.57	84.19	83.1	79.15	69.79	47.48	2.68
AMPS	362.72	334.41	293.11	230.56	174.59	130.7	110.15

TORQ(FL)#FT	1100.76	TORQ(LR)%FL	135.84	TORQ(BD)%FL	286.43
AMPS(LR)	1822.26	PF AT START	0.23		

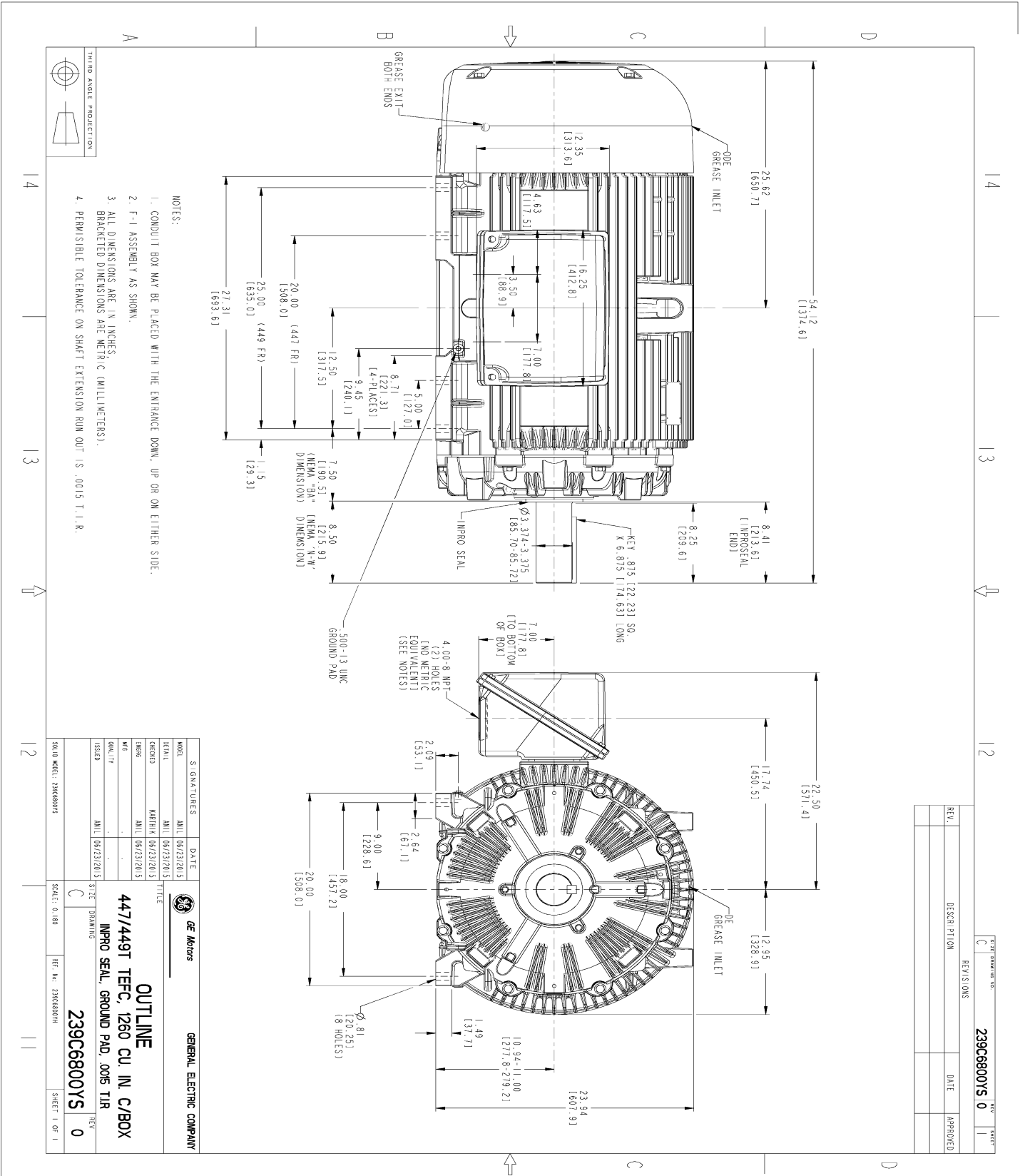
This motor is capable of two cold or one hot start with a maximum connected load inertia of 14698 Lb-Ft Sq (618.79 Kg-meter Sq) at 100% voltage, where the load torque varies with the square of the speed. Acceleration time with maximum inertia and the above load type is 61 seconds. Safe stall time at 100% voltage is 145 seconds cold, 73 seconds hot. Rotor inertia is 214.07 Lb-Ft Sq (9.01 Kg-meter Sq).

Open Circuit A-C:	1.072	Short Circuit D-C:	0.033
Short Circuit A-C:	0.06	X/R Ratio:	12.359
Stator Slots:	72	Rotor Slots:	58

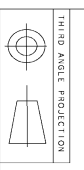
Speed Torque Current Curve (First Connection, First Speed)



Marks:



- NOTES:
1. CONDUIT BOX MAY BE PLACED WITH THE ENTRANCE DOWN, UP OR ON EITHER SIDE.
 2. F-1 ASSEMBLY AS SHOWN.
 3. ALL DIMENSIONS ARE IN INCHES. BRACKETED DIMENSIONS ARE METRIC (MILLIMETERS).
 4. PERMISSIBLE TOLERANCE ON SHAFT EXTENSION RUN OUT IS .0015 T.I.R.

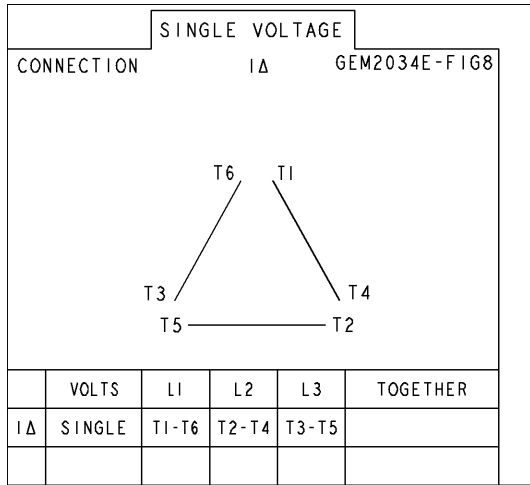


REV.	DESCRIPTION	DATE	APPROVED

MODEL	SIGNATURES	DATE	 GENERAL ELECTRIC COMPANY
SCALE			
ORDER			OUTLINE 447/449T TEFC, 1260 CU. IN. C/BOX IMPRO SEAL, GROUND PAD, .005 TIR 239C6800YS
REV			
QUALITY			
ISSUED			
SOLID MODEL: 239C6800YS	SCALE: 0.180	REF. NO. 239C6800HH	SHEET 1 OF 1

Marks:

Connection Diagram
GEM2034E-FIG8



End shield Assembly		
Part Description	DE Side Part#	ODE Side Part#
End Shield	115E4355AA1	115E4355LM1
Bearing	235A2514AG01	235A2514AG01
Slinger/Inproseal	235A4575GS5	235A4575GS5

Fan & Fan Cover Assembly	
Part Description	Part#
Fan	159C7100G03
Fan Cover	128D6841AA1

Conduit & Accessories Box Assembly	
Part Description	Part#
Conduit Box	179B9058AA-G02

Mechanical Accessories	
Part Description	Part#
Brake	
Tachometer	