

Product Information Packet

November 9, 2016

Data shown is for the current revision model #. Ensure your nameplate model # matches.

Model Number:	5KS447LAA308D
Catalog Number:	M7966
Instruction Manual:	GEI-56128
Connection Diagram:	GEM2034E-FIG7
Outline Drawing:	239CC800AA

Accessory Connection Diagrams			
Bearing Thermocouple:	None	Heater:	None
RTD:	None	Thermistor:	None
Thermostat:	None	Winding Thermocouple:	None
Bearing RTD:	None		

Table of Contents	
Specification	01
Performance Characteristics	02
Outline Drawing	03
Connection Drawing(s)	04

Marks:

MODEL NUMBER:	5KS447LAA308D	Estimated Weight:	2510 Lbs
Outline Drawing:	239CC800AA	Time Rating:	CONT
Connection Diagram:	GEM2034E-FIG7	Enclosure:	TEFC
Instruction Book:	GEI-56128	Encl Construction:	SD
Design Code:	49BD3086A	Ambient Max(°C):	40
Type:	KS	Alt Ambient Max(°C):	--
Frame:	447T	Insulation Class:	F
Phases:	3	NEMA Design:	A
Poles:	6	Nominal Efficiency:	95.8 %
Output Power:	150HP 111KW	Guaranteed Efficiency:	95.0
RPM:	1195	3/4 Load Efficiency:	95.7
Voltage:	460	KVA Code:	J
Hertz:	60	Max KVAR:	60.3
Amps - FL:	182.0	Power Factor:	80.5
Service Factor:	1.15	Bearing - DE:	6318ZC3S0
Alt Service Factor:	--	Bearing - ODE:	6318ZC3S0

Enclosure is Totally Enclosed Fan-Cooled

Stamped Nameplate Notes:

INVERTER DUTY PER NEMA MG1 PART 31
 ALTERNATE RATING FOR PWM CONTROL:1.0SF 40C AMBIENT
 VAR TORQUE RANGE 0-60 HZ

Additional Information:

6P - T EXTN
 700 CU IN - 3.00" NPT
 OIL RESISTANT SLEEVING ON LEADS
 F1 MOUNTING
 VIBRATION LIMIT 0.15 INCH PER SEC

Performance Characteristics

1st Winding 1st Connection

Design: 49BD3086A

Marks:

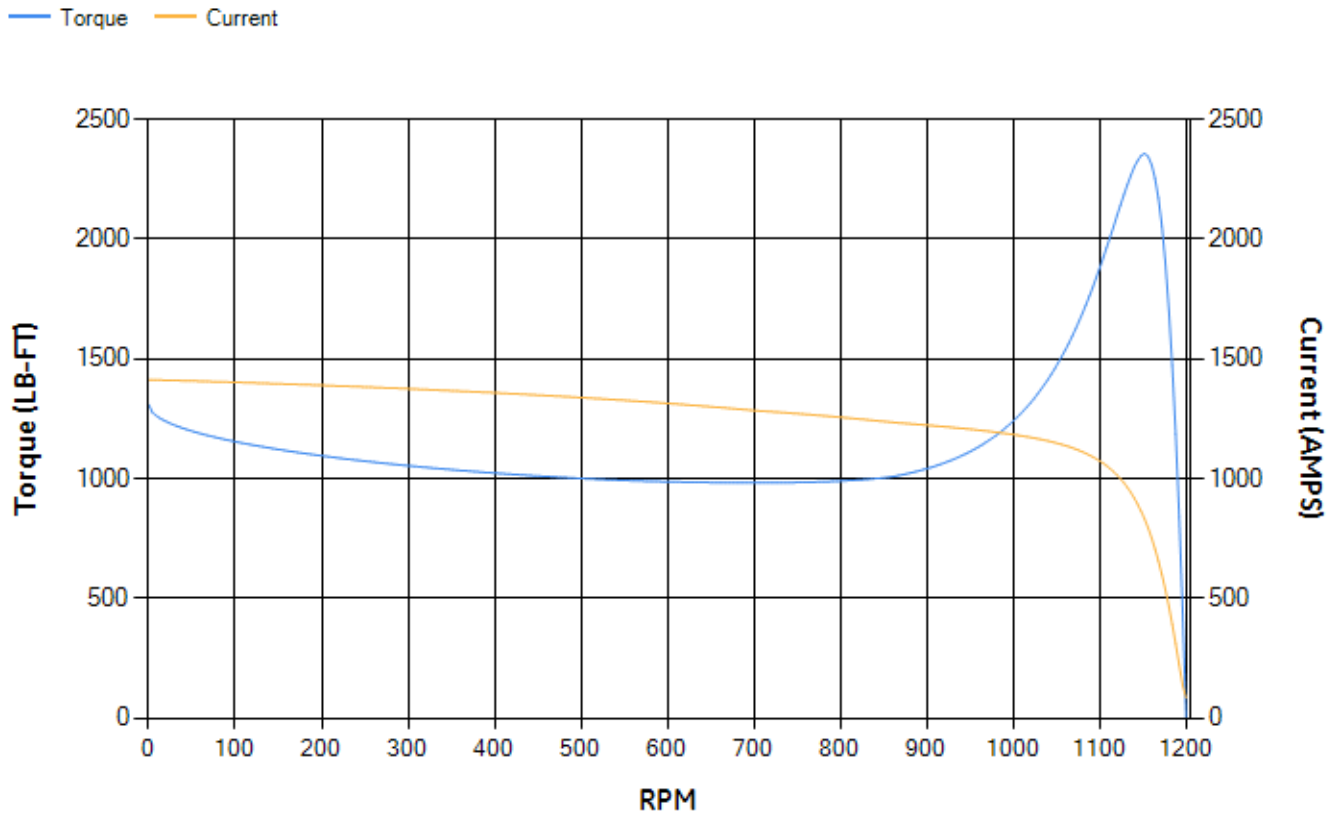
LOAD %	125.0	115.0	100.0	75.0	50.0	25.0	0.0
% EFF	95.3	95.46	95.85	95.75	95.28	92.76	0.00
% PF	83.32	82.39	80.4	74.6	63.02	40.23	2.8
AMPS	221	205.26	182.18	147.41	116.9	94.04	83.79

TORQ(FL)#FT	659.89	TORQ(LR)%FL	198.35	TORQ(BD)%FL	356.64
AMPS(LR)	1412.86	PF AT START	0.29		

This motor is capable of two cold or one hot start with a maximum connected load inertia of 9332 Lb-Ft Sq (392.88 Kg-meter Sq)at 100% voltage, where the load torque varies with the square of the speed. Acceleration time with maximum inertia and the above load type is 39 seconds. Safe stall time at 100% voltage is 95 seconds cold, 57 seconds hot. Rotor inertia is 115.65 Lb-Ft Sq (4.87 Kg-meter Sq).

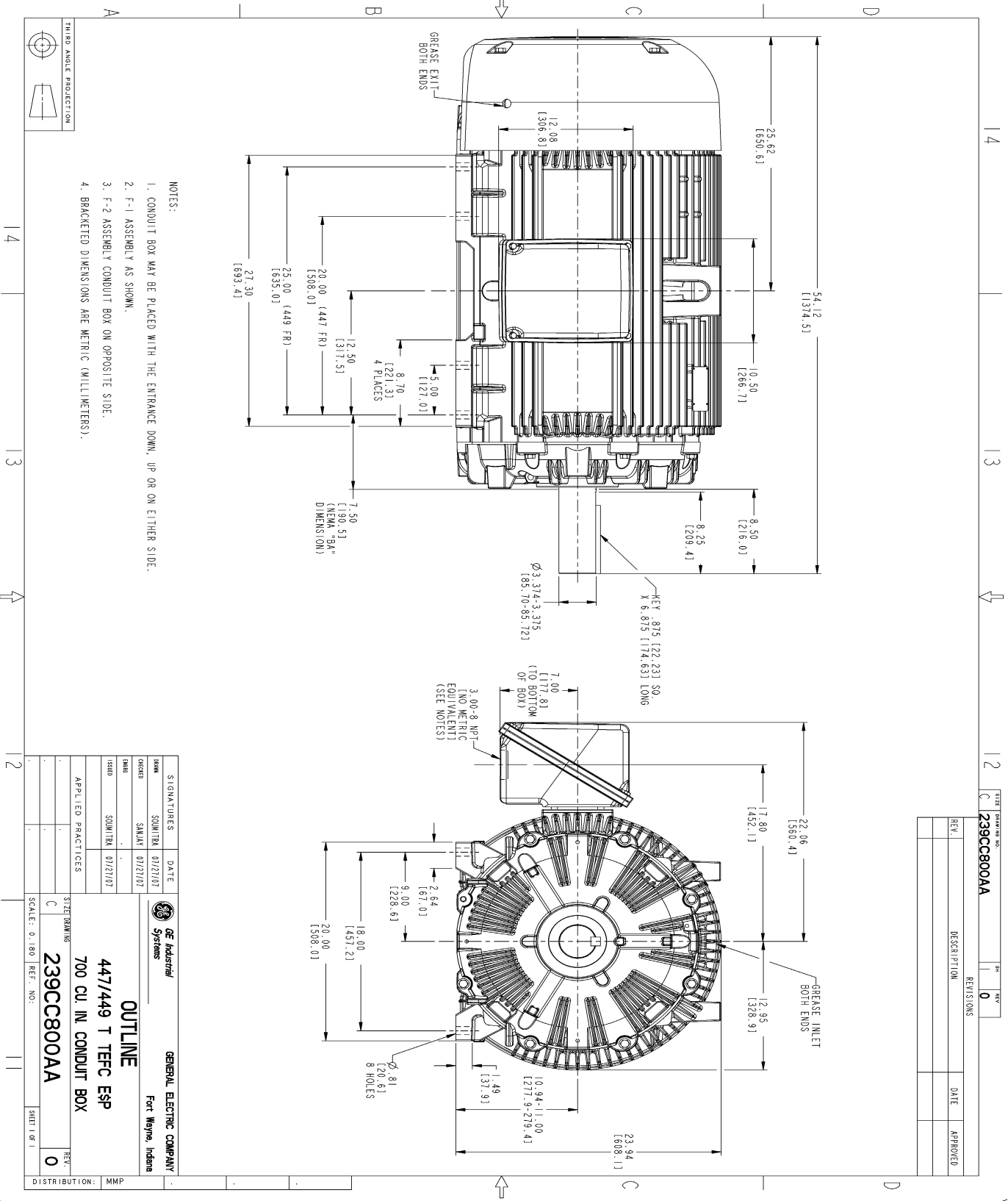
Open Circuit A-C:	0.96	Short Circuit D-C:	0.024
Short Circuit A-C:	0.052	X/R Ratio:	8.921
Stator Slots:	72	Rotor Slots:	58

Speed Torque Current Curve (First Connection, First Speed)



NAME:501352727 OBJECT:239CC800AA DATE:31-Jul-07 14:14:01

Marks:



- NOTES:
1. CONDUIT BOX MAY BE PLACED WITH THE ENTRANCE DOWN, UP OR ON EITHER SIDE.
 2. F-1 ASSEMBLY AS SHOWN.
 3. F-2 ASSEMBLY CONDUIT BOX ON OPPOSITE SIDE.
 4. BRACKETED DIMENSIONS ARE METRIC (MILLIMETERS).

REV.	DESCRIPTION	DATE	APPROVED

SIGNATURES	DATE	GENERAL ELECTRIC COMPANY
DESIGNED BY: SAJAN 01/27/07	01/27/07	Fort Wayne, Indiana
DRAWN BY: SAJAN 01/27/07	01/27/07	
APPLIED PRACTICES	SHEETWORKING	
	C	
	SCALE: 0.180	REF. NO.: 239CC800AA
		SHEET 1 OF 1
		DISTRIBUTION: MMP

GE Industrial Systems

OUTLINE

447/449 T TEFC ESP

700 CU. IN. CONDUIT BOX

Marks:

Connection Diagram
GEM2034E-FIG7

