

Product Information Packet

April 16, 2017

Data shown is for the current revision model #. Ensure your nameplate model # matches.

Model Number:	5KS365LAA208D1
Catalog Number:	M7934
Instruction Manual:	GEI-56128
Connection Diagram:	GEM2034E-FIG7
Outline Drawing:	239CC200AA

Accessory Connection Diagrams			
Bearing Thermocouple:	None	Heater:	None
RTD:	None	Thermistor:	None
Thermostat:	None	Winding Thermocouple:	None
Bearing RTD:	None		

Table of Contents

Specification	01
Performance Characteristics	02
Outline Drawing	03
Connection Drawing(s)	04
Spare parts	05



Marks:

MODEL NUMBER:	5KS365LAA208D1	Estimated Weight:	1010 Lbs
Outline Drawing:	239CC200AA	Time Rating:	CONT
Connection Diagram:	GEM2034E-FIG7	Enclosure:	TEFC
Instruction Book:	GEI-56128	Encl Construction:	SD
Design Code:	36BD1169A	Ambient Max(°C):	40
Type:	KS	Alt Ambient Max(°C):	--
Frame:	365T	Insulation Class:	F
Phases:	3	NEMA Design:	A
Poles:	4	Nominal Efficiency:	95.4 %
Output Power:	75HP 55.5KW	Guaranteed Efficiency:	94.5
RPM:	1785	3/4 Load Efficiency:	95.4
Voltage:	460	KVA Code:	G
Hertz:	60	Max KVAR:	28.5
Amps - FL:	90.8	Power Factor:	81.0
Service Factor:	1.15	Bearing - DE:	6314ZC3
Alt Service Factor:	--	Bearing - ODE:	6314ZC3

Enclosure is Totally Enclosed Fan-Cooled

Stamped Nameplate Notes:

INVERTER DUTY PER NEMA MG1 PART 31
 ALTERNATE RATING FOR PWM CONTROL:
 1.0 SF VAR TORQUE RANGE 0-60 HZ

Additional Information:

4P - T EXTN
 3/4" CU IN - 3.00" NPT
 OIL RESISTANT SLEEVING ON LEADS
 F1 MOUNTING
 VIBRATION LIMIT 0.15 INCH PER SEC

Performance Characteristics

1st Winding 1st Connection

Design: 36BD1169A

Marks:

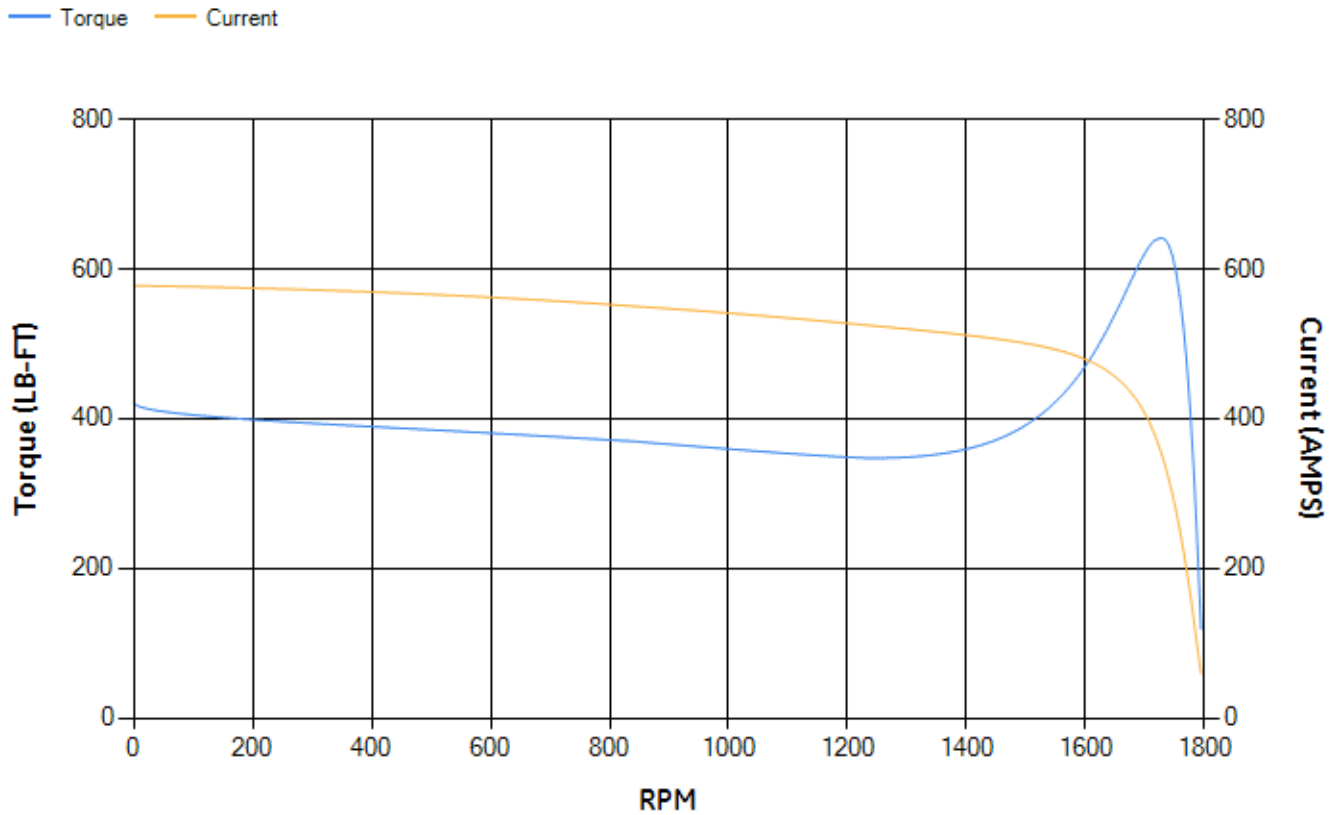
LOAD %	125.0	115.0	100.0	75.0	50.0	25.0	0.0
% EFF	94.82	95.02	95.46	95.43	95.02	92.49	0.00
% PF	83.82	83.04	81.29	75.96	64.88	42.05	2.89
AMPS	110.4	102.3	90.26	72.62	56.93	45.12	39.68

TORQ(FL)#FT	220.83	TORQ(LR)%FL	190.99	TORQ(BD)%FL	289.68
AMPS(LR)	577.76	PF AT START	0.32		

This motor is capable of two cold or one hot start with a maximum connected load inertia of 1400 Lb-Ft Sq (58.94 Kg-meter Sq)at 100% voltage, where the load torque varies with the square of the speed. Acceleration time with maximum inertia and the above load type is 26 seconds. Safe stall time at 100% voltage is 63 seconds cold, 31 seconds hot. Rotor inertia is 14.77 Lb-Ft Sq (0.62 Kg-meter Sq).

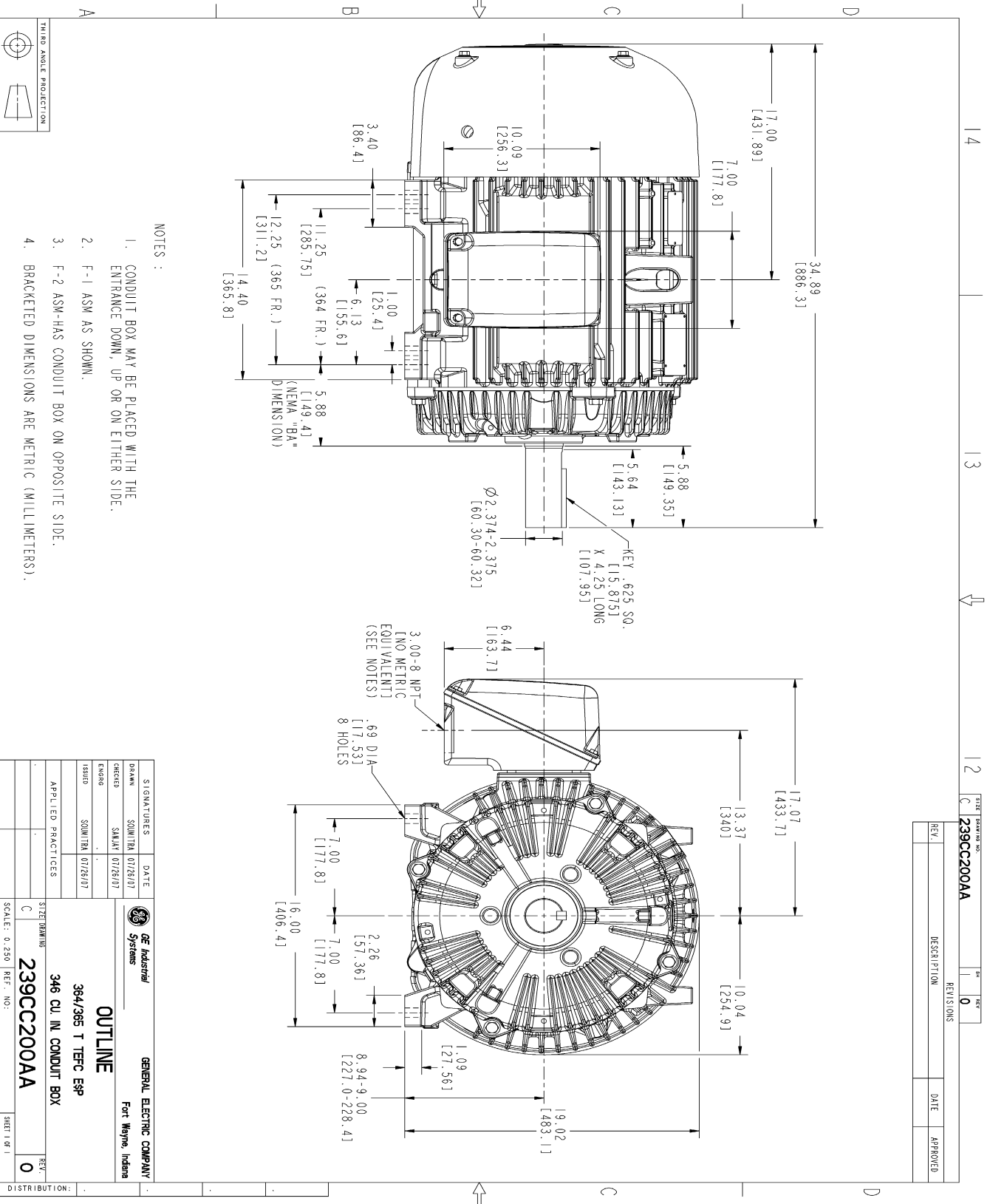
Open Circuit A-C:	0.594	Short Circuit D-C:	0.025
Short Circuit A-C:	0.034	X/R Ratio:	9.279
Stator Slots:	60	Rotor Slots:	50

Speed Torque Current Curve (First Connection, First Speed)



NAME:501352727 OBJECT:239CC200AA DATE:31-Jul-07 10:42:09

Marks:



NOTES :

- 1. CONDUIT BOX MAY BE PLACED WITH THE ENTRANCE DOWN, UP OR ON EITHER SIDE.
- 2. F-1 ASM AS SHOWN.
- 3. F-2 ASM-HAS CONDUIT BOX ON OPPOSITE SIDE.
- 4. BRACKETED DIMENSIONS ARE METRIC (MILLIMETERS).

REV.	DESCRIPTION	DATE	APPROVED

STAMP	DATE	
DRAWN	01/28/07	
CHECKED	01/28/07	
ENGINEER	01/28/07	
ISSUED	01/28/07	

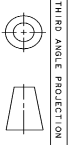
GE Industrial Systems
GENERAL ELECTRIC COMPANY
 Fort Wayne, Indiana

OUTLINE
 364/365 T TFC ESP
 346 CU. IN. CONDUIT BOX

SHEET NO: **0**
 SCALE: 0.250 REF. NO.:

DISTRIBUTION:

14 13 12 11



Marks:

Connection Diagram
GEM2034E-FIG7



End shield Assembly		
Part Description	DE Side Part#	ODE Side Part#
End Shield	115E4250AA1	115E4250LK1
Bearing	235A2616AA01	235A2616AA01
Slinger/Inproseal	149C4399G05	149C4399G05

Fan & Fan Cover Assembly	
Part Description	Part#
Fan	159C7100AA1
Fan Cover	128D6810AA1

Conduit & Accessories Box Assembly	
Part Description	Part#
Conduit Box	149C4429AA2

Mechanical Accessories	
Part Description	Part#
Brake	
Tachometer	

