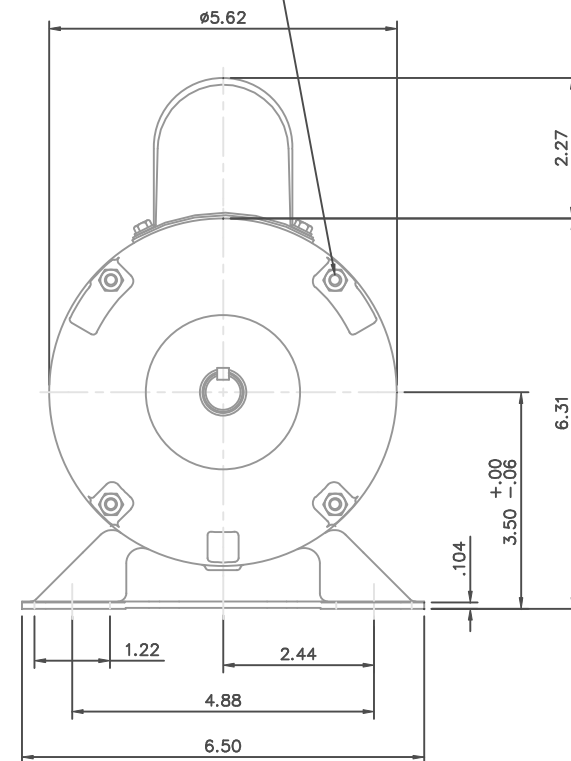


10-32 UNF 2A THRU BOLTS
(4) REQ'D. ON A Ø5.125 B.C.



DASH NO.	"C"	"AD"
550	11.15	4.65
575	11.40	4.90
600	11.65	5.15
625	11.90	5.40
650	12.15	5.65
675	12.40	5.90
700	12.65	6.15

GASKETS THROUGHOUT

		TOLERANCES UNLESS SPECIFIED		ELECTRIC MOTORS GEARMOTORS AND DRIVES	DRAWN PG 8/8/02			
		DEC.	INCHES		CHK			
		.X	±.1		APPD			
		.XX	±.03		SCALE 1=2			
		.XXX	±.005		REF 030422			
		.XXXX	±.0005	MAT'L	FMF 100804.00			
NO.	REVISION	BY & DATE	CHK ANG ±1/2"	FINISH	PREV			
THIS DRAWING IN DESIGN AND DETAIL IS OUR PROPERTY AND MUST NOT BE USED EXCEPT IN CONNECTION WITH OUR WORK ALL RIGHTS OF DESIGN AND INVENTION ARE RESERVED THIS IS AN ELECTRONICALLY GENERATED DOCUMENT - DO NOT SCALE THIS PRINT				RFP	CAD FILE 031711	SIZE B	DRAWING NO. 031711	REV.
				DIST				