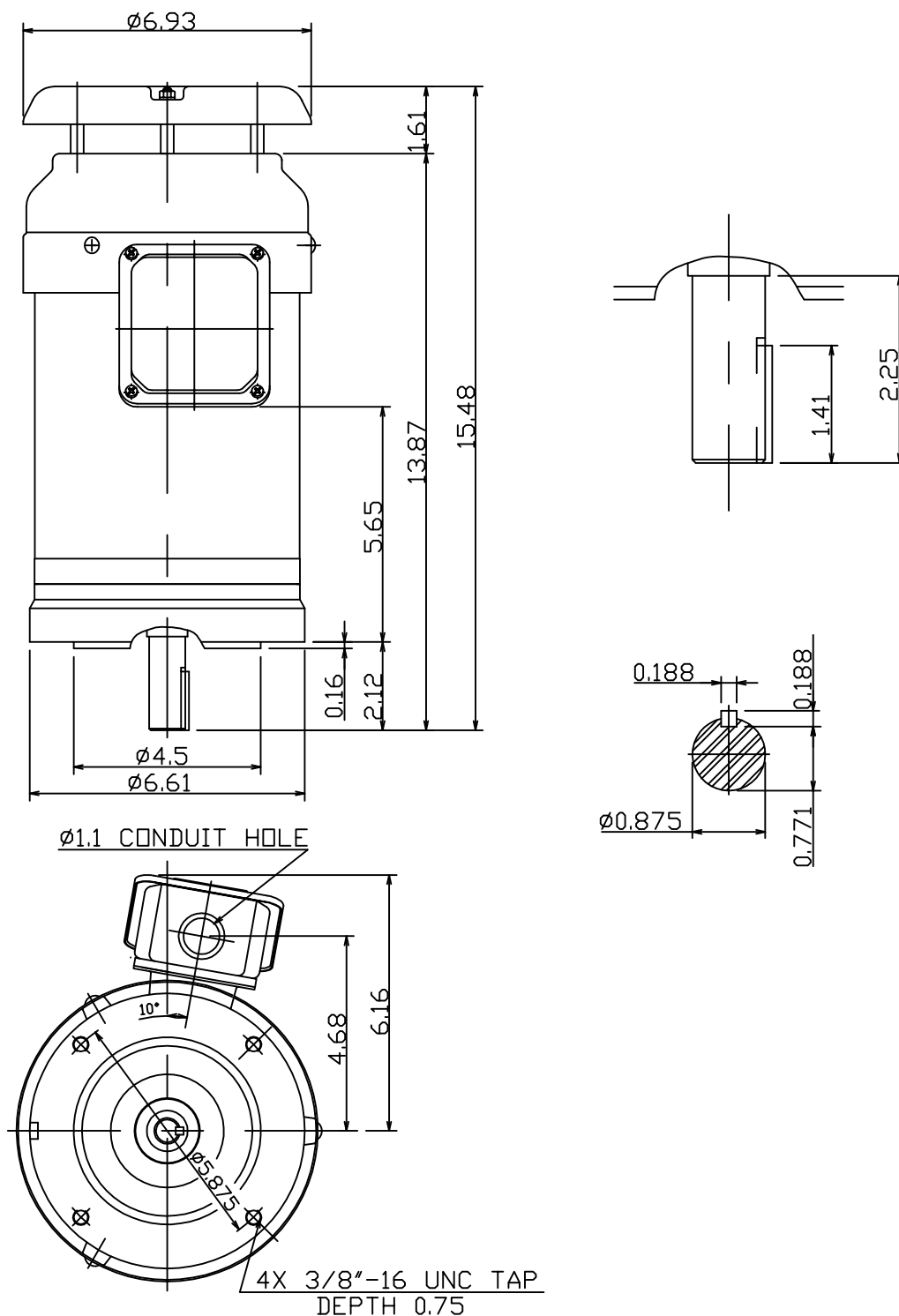


DATE OCTOBER 29, 2009	OUTLINE DIMENSIONS 3-PHASE INDUCTION MOTOR	MOTOR TYPE: AETHCF
CAT. #: GPV1/54C		FRAME NO. 145TC

Pole	HP	kW	Hz	VOLT	Syn.Speed r/min(rpm)
4	1.5	1.12	60	230/460	1800
Ins	Rating	Dimension in	Approx Weight	Bearings	
F	CONT.	inch.	46 lbs.	DE: 6205ZZ NDE: 6204ZZ	



09.24.09	防雨蓋尺寸變更	陳奕元
----------	---------	-----

DWN. Y.Y.CHEN	09-22-09	TEC® Westinghouse	DWG NO.
CHKD. C.Y.CHEN	09-24-09		31049Z107741
APPD. M.C.TSAI	09-24-09		