

Product Information Packet

November 8, 2016

Data shown is for the current revision model #. Ensure your nameplate model # matches.

Model Number:	5KS445LAA308D1
Catalog Number:	M7964
Instruction Manual:	GEI-56128
Connection Diagram:	GEM2034E-FIG7
Outline Drawing:	239CC600AA

Accessory Connection Diagrams			
Bearing Thermocouple:	None	Heater:	None
RTD:	None	Thermistor:	None
Thermostat:	None	Winding Thermocouple:	None
Bearing RTD:	None		

Table of Contents	
Specification	01
Performance Characteristics	02
Outline Drawing	03
Connection Drawing(s)	04



Marks:

MODEL NUMBER:	5KS445LAA308D1	Estimated Weight:	1880 Lbs
Outline Drawing:	239CC600AA	Time Rating:	CONT
Connection Diagram:	GEM2034E-FIG7	Enclosure:	TEFC
Instruction Book:	GEI-56128	Encl Construction:	SD
Design Code:	44BD3071A	Ambient Max(°C):	40
Type:	KS	Alt Ambient Max(°C):	--
Frame:	445T	Insulation Class:	F
Phases:	3	NEMA Design:	A
Poles:	6	Nominal Efficiency:	95.0 %
Output Power:	125HP 92.5KW	Guaranteed Efficiency:	94.1
RPM:	1190	3/4 Load Efficiency:	95.0
Voltage:	460	KVA Code:	H
Hertz:	60	Max KVAR:	48.5
Amps - FL:	153.0	Power Factor:	80.5
Service Factor:	1.15	Bearing - DE:	6318ZC3S0
Alt Service Factor:	--	Bearing - ODE:	6318ZC3S0

Enclosure is Totally Enclosed Fan-Cooled

Stamped Nameplate Notes:

INVERTER DUTY PER NEMA MG1 PART 31
 ALTERNATE RATING FOR PWM CONTROL:1.0SF 40C AMBIENT
 VAR TORQUE RANGE 0-60 HZ

Additional Information:

6P - T EXTN
 700 CU IN - 3.00" NPT
 OIL RESISTANT SLEEVING ON LEADS
 F1 MOUNTING
 VIBRATION LIMIT 0.15 INCH PER SEC

Performance Characteristics

1st Winding 1st Connection

Design: 44BD3071A

Marks:

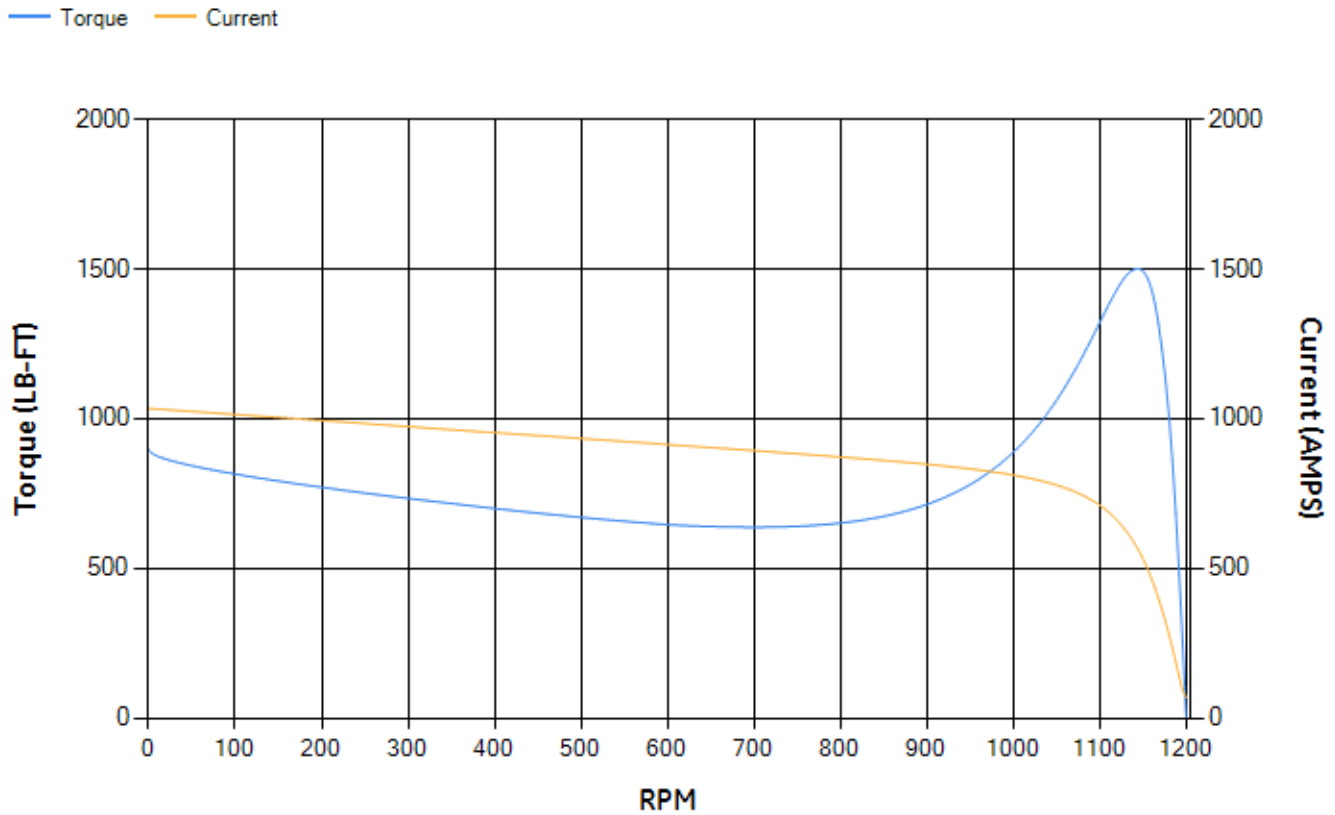
LOAD %	125.0	115.0	100.0	75.0	50.0	25.0	0.0
% EFF	94.39	94.61	95.06	95.02	94.53	91.69	0.00
% PF	82.81	82.1	80.44	75.22	64.26	41.75	3.35
AMPS	187.1	173.22	153.02	122.76	96.29	76.4	67.48

TORQ(FL)#FT	551.73	TORQ(LR)%FL	162.48	TORQ(BD)%FL	271.36
AMPS(LR)	1034.21	PF AT START	0.31		

This motor is capable of two cold or one hot start with a maximum connected load inertia of 3983 Lb-Ft Sq (167.68 Kg-meter Sq)at 100% voltage, where the load torque varies with the square of the speed. Acceleration time with maximum inertia and the above load type is 26 seconds. Safe stall time at 100% voltage is 60 seconds cold, 31 seconds hot. Rotor inertia is 78.74 Lb-Ft Sq (3.31 Kg-meter Sq).

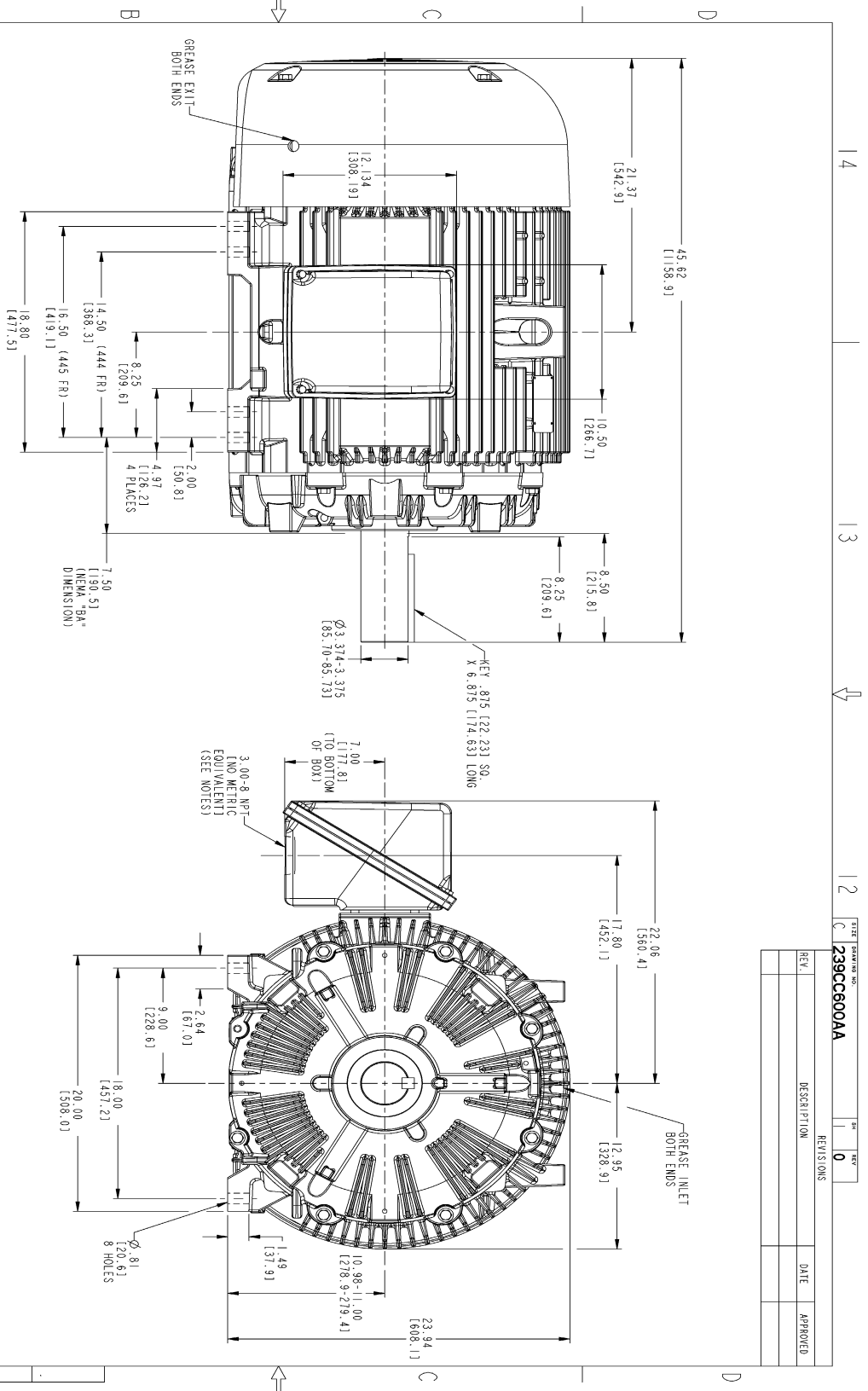
Open Circuit A-C:	0.639	Short Circuit D-C:	0.026
Short Circuit A-C:	0.045	X/R Ratio:	9.94
Stator Slots:	72	Rotor Slots:	58

Speed Torque Current Curve (First Connection, First Speed)



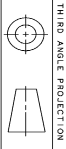
NAME:501352727 OBJECT:239CC600AA DATE:31-Jul-07 13:50:49

Marks:



NOTES:

1. CONDUIT BOX MAY BE PLACED WITH THE ENTRANCE DOWN, UP OR ON EITHER I
2. F-1 ASSEMBLY AS SHOWN.
3. F-2 ASSEMBLY CONDUIT BOX ON OPPOSITE SIDE.
4. BRACKETED DIMENSIONS ARE METRIC (MILLIMETERS).



REV.	DESCRIPTION	DATE	APPROVED

SIGNATURES	DATE	GE Industrial Systems	GENERAL ELECTRIC COMPANY
DESIGNED: SQUITTA	01/21/07		Fort Wayne, Indiana
CHECKED: SALAN	01/21/07		
ISSUED: SQUITTA	01/21/07		
APPLIED PRACTICES			
SIZING DIMENSIONS			
SCALE: 0.200 REF. NO:			
OUTLINE			
444/445 T TEFC ESP			
700 CU. IN. CONDUIT BOX			
239CC600AA			
SHEET 1 OF 1			
DISTRIBUTION: MMP			

Marks:

Connection Diagram
GEM2034E-FIG7

